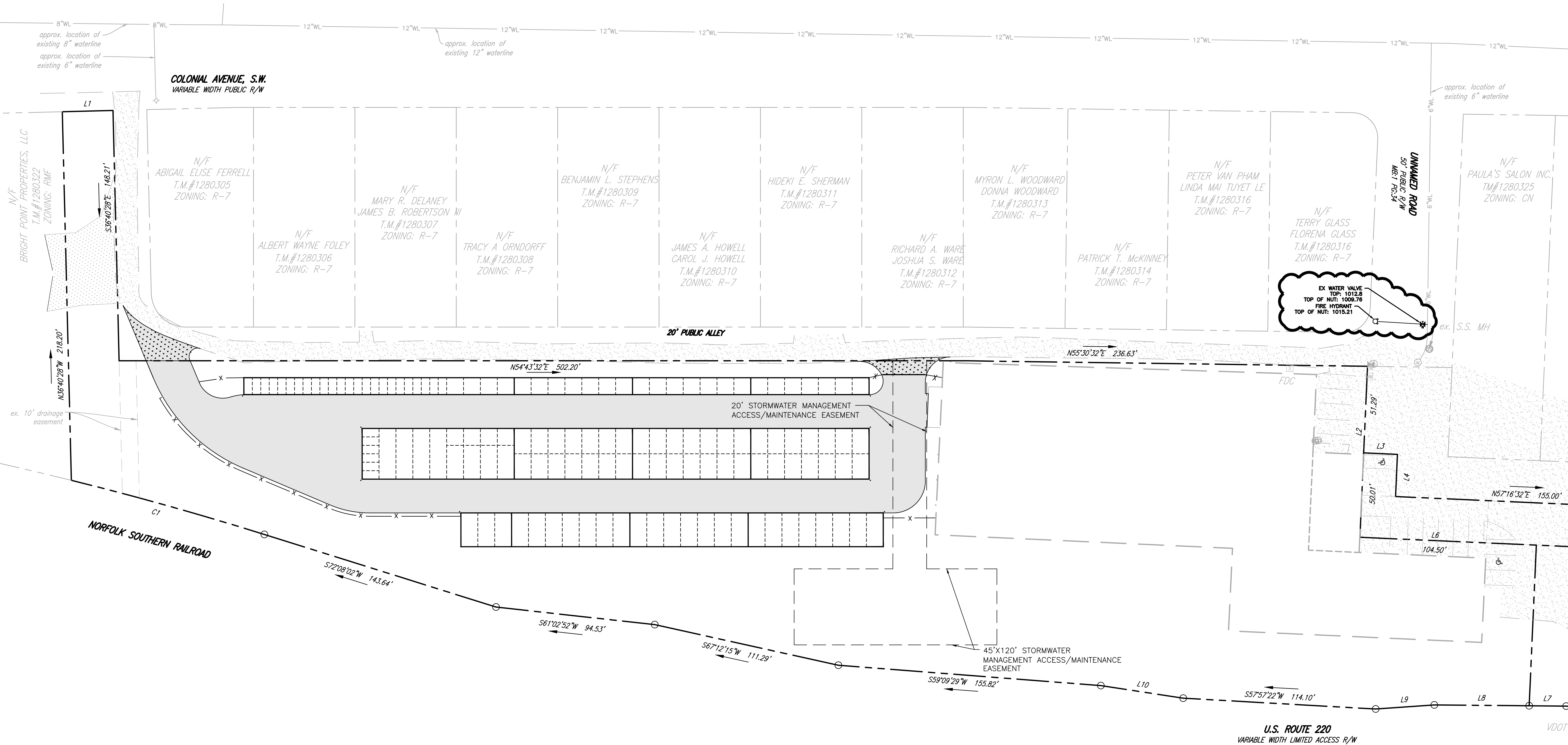
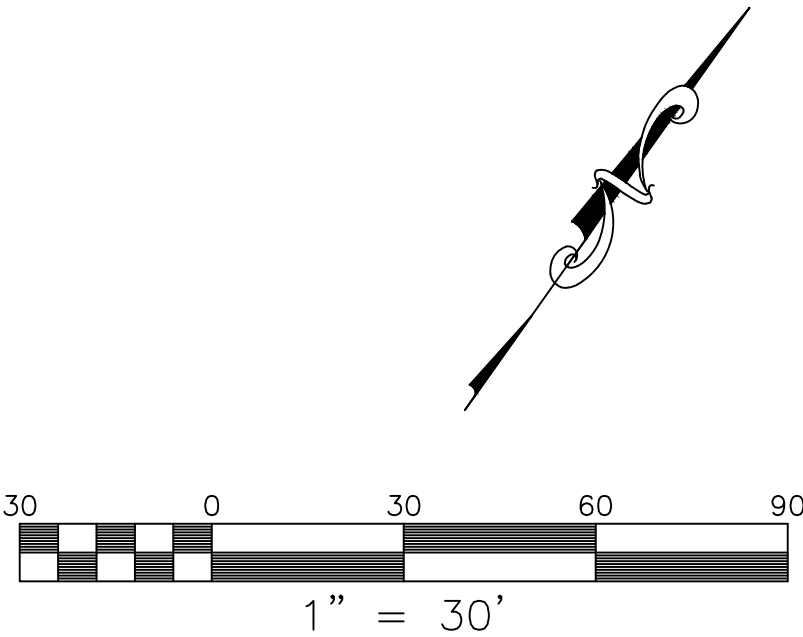


NOTES

- 1) OWNER OF RECORD: WINTER PROPERTIES PARTNERSHIP, LLP  
2) LEGAL REFERENCE: INSTRUMENT #220013470  
3) OLD TAX MAP NUMBERS: 1280321  
4) THIS PLAT WAS PREPARED WITHOUT THE BENEFIT OF A CURRENT TITLE REPORT AND THERE MAY EXIST ENCUMBRANCES WHICH AFFECT THE PROPERTY SHOWN HEREON.

AS-BUILT DRAWING NOTE:  
AS-BUILT DRAWING FOR SANITARY SEWER AND WATERLINE IMPROVEMENTS ARE FOR AS-BUILT PURPOSES ONLY. NO IMPROVEMENTS OTHER THAN WATER AND SANITARY SEWER STRUCTURES WERE AS-BUILT OR INDICATED AS SUCH ON THE SUBJECT PLAN SET. UNDERGROUND PIPING WAS NOT LOCATED. LOCATION SHOWN IS APPROXIMATE BASED ON SURFACE FEATURES AND INFORMATION PROVIDED BY CONTRACTOR.



**BALZER & ASSOCIATES**  
PLANNERS / ARCHITECTS  
ENGINEERS / SURVEYORS

Roanoke / Richmond  
New River Valley  
Shenandoah Valley

[www.balzer.cc](http://www.balzer.cc)

1208 Corporate Circle  
Roanoke, VA 24018  
540.772.9580



COLONIAL SELF STORAGE

WWA AS-BUILT PLAN

2734 COLONIAL AVENUE  
CITY OF ROANOKE, VIRGINIA

DRAWN BY: EJP  
DESIGNED BY: CPB  
CHECKED BY: DSH  
DATE: 07/30/2024  
SCALE: 1" = 30'  
REVISIONS:

**AS-BUILT**  
PROJECT NO. 04220091.00