

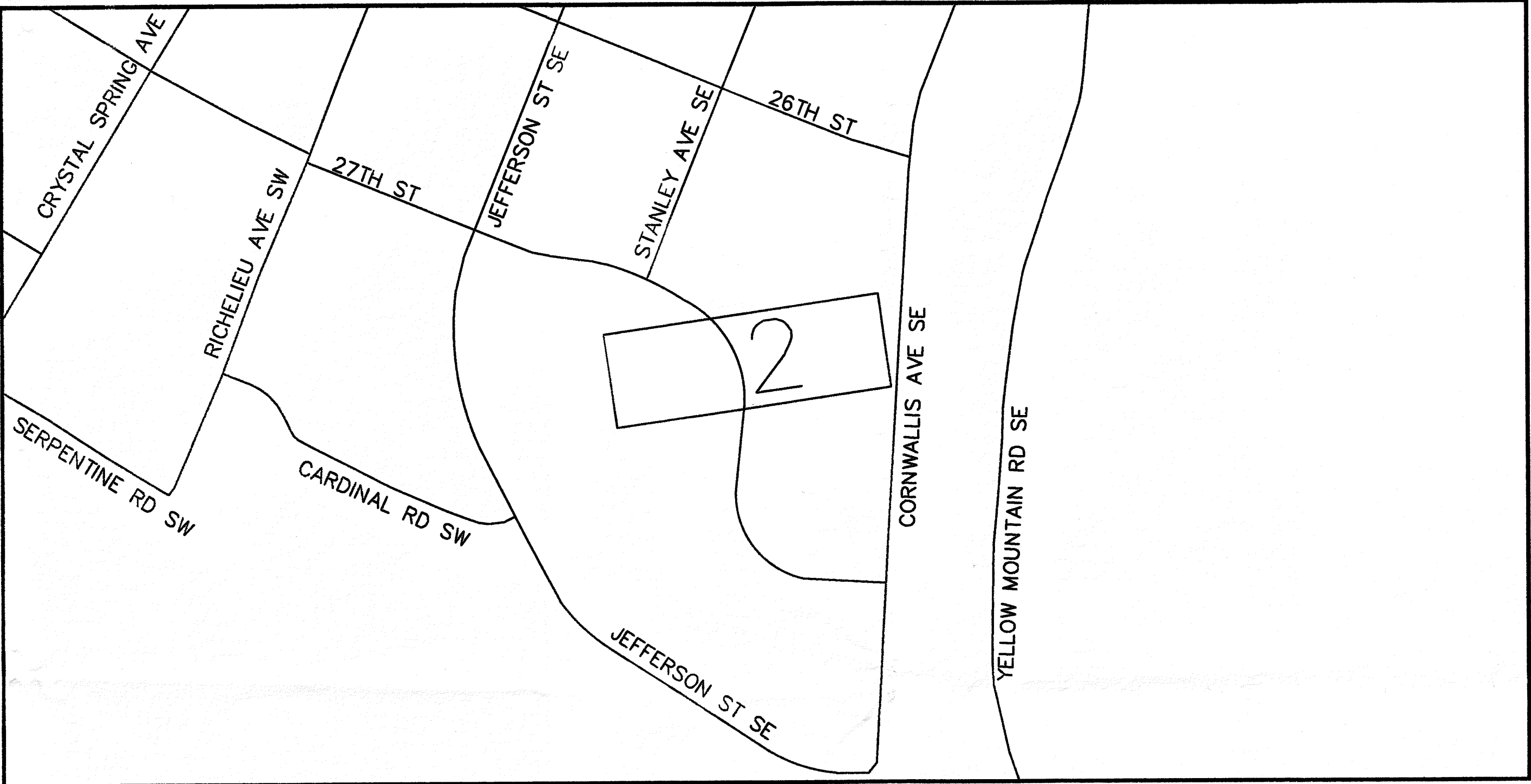
27th ST SE SEWER RELOCATION

INDEX MAP

SHEET INDEX

LEGEND (EXISTING)	
WATER/FORCEMAIN	STORM
VALVE	DROP INLET
AIR RELEASE	LARGE CURB INLET
BLOW-OFF/ FLUSHING ASSEMBLY	SMALL CURB INLET
SINGLE METER BOX	MANHOLE
DOUBLE METER BOX	
FIRE HYDRANT	
WELL	
SEWER	OTHER
MANHOLE	POWER POLE
CLEAN OUT	POWER POLE WITH GUY WIRE
GAS VALVE	LAMP POST
UTILITY PEDESTAL	TRAFFIC POLE
MAILBOX	SIGN

⊗ DENOTES VALVE TO BE ABANDONED



- 1 COVER
- 2 PLAN & PROFILE
- 3 SEWER DETAILS

APPROVED FOR CONSTRUCTION:

WWWA CONTACT:

PROJECT MANAGER: _____

ENGINEERING COORD: _____

PROJECT INSPECTOR: _____

GENERAL NOTES:

- ALL CONSTRUCTION METHODS AND MATERIALS SHALL CONFORM TO THE LATEST EDITION OF THE DESIGN AND CONSTRUCTION STANDARDS AND SPECIFICATIONS OF THE WESTERN VIRGINIA WATER AUTHORITY (WWWA) AVAILABLE AT WWW.WESTERNVAVATER.ORG OR BY CONTACTING THE AUTHORITY AT 540-853-5700. THE PROJECT SHALL ALSO COMPLY WITH THE GOVERNING JURISDICTION'S STANDARDS AND OTHER AGENCY STANDARDS (E.G., VDOT, DEQ, DCR, VDH, ETC.) WHERE APPLICABLE.
- WHILE NOT REQUIRED ON ALL WWWW PROJECTS, WATER SERVICE AND METER REPLACEMENT SHOULD BE DISCUSSED PRIOR TO CONSTRUCTION. THE AUTHORITY WILL INSTALL ALL NEW WATER METERS AND REMOVE ALL EXISTING WATER METERS. THE CONTRACTOR SHALL INSTALL COMPLETE NEW WATER SERVICES INCLUDING THE METER SETTER AND BOX IN CONFORMANCE WITH THE AUTHORITY'S STANDARDS. FOLLOWING METER REPLACEMENT BY THE AUTHORITY, THE CONTRACTOR SHALL DEMOLISH THE EXISTING WATER METER SETTER AND BOX. THE CONTRACTOR SHALL COORDINATE EXISTING METER REMOVAL AND NEW METER INSTALLATION DIRECTLY WITH THE AUTHORITY. THE CONTRACTOR SHALL PROVIDE AT LEAST THREE (3) BUSINESS DAYS ADVANCE NOTICE TO THE AUTHORITY PRIOR TO NEEDING METER INSTALLATIONS. THE CONTRACTOR SHALL SEQUENCE CONSTRUCTION ACTIVITY TO RECEIVE NEW METERS BEFORE CONTACTING THE AUTHORITY FOR WATER METER REPLACEMENT.
- ALL CONNECTIONS TO EXISTING WATERLINES SHALL BE PERFORMED BY THE WWWW. THE CONTRACTOR SHALL PROVIDE FULL STAINLESS STEEL TAPPING SLEEVE(S) AND VALVE(S). THE CONTRACTOR SHALL EXCAVATE TO THE EXISTING WATERLINE, SHORE THE TRENCH PER OSHA REQUIREMENTS, CLEAN THE EXISTING WATERLINE, AND INSTALL THE TAPPING SLEEVE AND VALVE PRIOR TO THE AUTHORITY PERFORMING THE TAP. THE CONTRACTOR SHALL NOTIFY THE WWWW INSPECTOR AT LEAST SEVENTY-TWO (72) HOURS PRIOR TO REQUIRING THE CONNECTION.
- ALL CONNECTIONS TO EXISTING SANITARY SEWERLINES SHALL BE PERFORMED BY THE AUTHORITY. THE CONTRACTOR SHALL EXCAVATE TO THE EXISTING SEWERLINE, SHORE THE TRENCH PER OSHA REQUIREMENTS, AND CLEAN THE EXISTING SEWERLINE PRIOR TO THE AUTHORITY PERFORMING THE TAP. THE CONTRACTOR SHALL NOTIFY THE WWWW INSPECTOR AT LEAST SEVENTY-TWO (72) HOURS PRIOR TO REQUIRING THE CONNECTION.
- THE CONTRACTOR SHALL PERFORM ALL MANHOLE CONNECTIONS. THE CORING AND BOOT INSTALLATION SHALL BE INSPECTED AND APPROVED BY AN AUTHORITY CONSTRUCTION INSPECTOR PRIOR TO ACTIVATING SEWER SERVICE. THE CONTRACTOR SHALL CONTACT THE AUTHORITY'S CONSTRUCTION INSPECTOR RESPONSIBLE FOR THE PROJECT AT LEAST ONE (1) DAY PRIOR TO INITIATING THE MANHOLE CONNECTION.
- PRIOR TO CONSTRUCTION IN THE RIGHT-OF-WAY, ALL APPLICABLE PERMIT(S) FROM THE GOVERNING JURISDICTION AND/OR AGENCY MUST BE OBTAINED AND A COPY KEPT ON THE PROJECT SITE.
- FOR PROJECTS REQUIRING TRAFFIC CONTROL IN THE CITY OF ROANOKE, NOTIFY MANAGER OF TRANSPORTATION, MARK JAMISON, AT 540-853-5471 AT LEAST TWO WEEKS IN ADVANCE OF REQUIRING TRAFFIC CONTROL. FOR A LANE CLOSURE PERMIT IN THE CITY OF ROANOKE, CONTACT THE TRAFFIC ENGINEER, HONG LIU, AT 540-853-2686. IN ROANOKE, BOTETOURT OR FRANKLIN COUNTIES. TRAFFIC CONTROL REQUIREMENTS ARE APPROVED BY VDOT, PLEASE CONTACT THE LOCAL VDOT OFFICE FOR ADDITIONAL REQUIREMENTS. TRAFFIC CONTROL SHALL BE PROVIDED IN ACCORDANCE WITH THE MOST RECENT MUTCD MANUAL AND THE VDOT WORK AREA PROTECTION MANUAL UNLESS OTHERWISE SPECIFIED BY THE CITY.
- THE CONTRACTOR SHALL NOTIFY THE WWWW ENGINEERING COORDINATOR, MARK SINK, AT 540-537-3460 AT LEAST THREE (3) DAYS PRIOR TO CONSTRUCTION.
- A PRE-CONSTRUCTION CONFERENCE SHALL BE SCHEDULED AT LEAST ONE (1) DAY PRIOR TO ANY CONSTRUCTION.
- THE CONTRACTOR SHALL HAVE A VALID MISS UTILITY TICKET PRIOR TO EXCAVATION. CONTACT MISS UTILITY AT 1-800-552-7001.
- ALL EXISTING UTILITIES MAY NOT BE SHOWN OR MAY NOT BE SHOWN IN THEIR EXACT LOCATION. CONTRACTOR SHALL LOCATE ALL UTILITIES AND DETERMINE ALL INVERTS PRIOR TO CONSTRUCTION TO ALLOW FOR ADJUSTMENTS DUE TO CONFLICTS WITH OTHER UTILITIES. THE CONTRACTOR SHALL COMPLY WITH THE VIRGINIA STATE WATER WORKS REGULATIONS, SECTION 12VAC5-590-1150, AND THE VIRGINIA STATE SEWAGE COLLECTION AND TREATMENT REGULATIONS WHERE LINES CROSS.
- AN APPROVED SET OF PLANS AND PERMITS MUST BE AVAILABLE AT THE CONSTRUCTION SITE AT ALL TIMES.
- CONSTRUCTION DEBRIS SHALL BE CONTAINERIZED IN ACCORDANCE WITH THE VIRGINIA LITTER CONTROL ACT.
- THE CONTRACTOR'S CERTIFIED RESPONSIBLE LAND DISTURBER SHALL BE RESPONSIBLE TO IMPLEMENT ALL EROSION & SEDIMENT CONTROLS REQUIRED. ALL EROSION AND SEDIMENT CONTROL MEASURES MUST BE IN ACCORDANCE WITH THE LATEST EDITION OF THE VIRGINIA EROSION AND SEDIMENT CONTROL HANDBOOK AND SHALL BE INSTALLED PRIOR TO CONSTRUCTION. THE WWWW MAY REQUIRE CHANGES TO AN APPROVED PLAN IN THE FOLLOWING CASES WHERE INSPECTION HAS REVEALED THAT THE PLAN IS INADEQUATE TO SATISFY APPLICABLE REGULATIONS.
- THE CONTRACTOR SHALL PROVIDE ADEQUATE MEANS OF CLEANING ALL VEHICLES AND EQUIPMENT PRIOR TO ENTERING PUBLIC STREETS. IT IS THE CONTRACTOR'S RESPONSIBILITY TO ENSURE THAT THE STREETS ARE KEPT IN A CLEAN, MUD- AND DUST-FREE CONDITION AT ALL TIMES.
- FIELD CHANGES SHALL BE APPROVED BY THE AUTHORITY'S ENGINEERING DIVISION PRIOR TO SUCH CONSTRUCTION. NO ADDITIONAL PAYMENTS SHALL BE MADE TO CONTRACTOR FOR WORK PERFORMED WITHOUT PRIOR APPROVAL FROM AUTHORITY'S PROJECT MANAGER.
- THE CONTRACTOR SHALL MAKE PROVISIONS TO PROVIDE ACCESS TO ALL PROPERTIES DURING CONSTRUCTION AND SHALL MAINTAIN SAFE ACCESSIBILITY TO FIRE HYDRANTS AT ALL TIMES.
- THE CONTRACTOR SHALL BE RESPONSIBLE FOR LOCATING AND UNCOVERING ALL MANHOLES AFTER PAVING. MANHOLE RIMS SHALL BE INSTALLED TO GRADE AND FLUSH WITH THE FINAL PAVEMENT.
- UNREPAIRED ROADWAYS OPENED TO TRAFFIC SHALL HAVE, AT A MINIMUM, COMPACTED AGGREGATE MATERIAL VDOT 21A OR 21B FLUSH WITH THE ADJACENT ROADWAY SURFACE AND SHALL BE INSPECTED AND REPAIRED ON A DAILY BASIS. SOME AREAS MAY REQUIRE A TEMPORARY PATCH UNTIL FINAL PAVING CAN BE COMPLETED.
- THE CONTRACTOR SHALL NOT EXCAVATE MORE TRENCH LENGTH THAN CAN BE RESTORED WITHIN THE SAME WORK DAY. ALL TRENCHES SHALL BE BACKFILLED OR PLATED AT THE END OF EACH WORK DAY OR WHEN THE CONTRACTOR IS NOT ON SITE.
- THE CONTRACTOR SHALL SUPPLY THE AUTHORITY WITH CORRECT AS-BUILT PLANS BEFORE SUBSTANTIAL COMPLETION WILL BE GRANTED.
- HORIZONTAL & VERTICAL BENDS SHOWN IN THE PLAN ARE APPROXIMATE. CONTRACTOR TO BE AWARE THAT ALL HORIZONTAL AND/OR VERTICAL BEND FITTINGS MAY NOT BE SHOWN IN THE PLANS.
- CONTRACTOR SHALL RECORD VERTICAL AS-BUILT DATA TO INCLUDE DEPTH OF WATER MAIN, WATER MAIN FEATURES & ALL UTILITY CROSSINGS.

Project Name	
Contractor	WWWA CIP 4
Construction Start Date	
Completion Date	April 14, 2022
Sewer Gravity Main(s)	
Manufacturer	American
Diameter	8
Pipe Class	CIS Class 51
Material	HDPE
Comments	198' 4" of HDPE fusion pipe DR7
Sewer Gravity Lateral(s)	
Manufacturer	
Diameter	4"
Pipe Class	SCH 40
Material	PVC
Comments	84' of SCH 40 with 2 4' and 2 4' sweeps
Sewer Manhole(s)	
Manufacturer	CT Jamison
Material	Precast Concrete
Ring & Cover Manuf.	US Foundary
Cover Type	Waterlight
Comments	3 manholes with frame & lids

WESTERN VIRGINIA

WATER AUTHORITY

ENGINEERING SERVICES

601 S JEFFERSON ST, SUITE 300

ROANOKE, VA 24011

540-853-5700

COMMITTEE OF THE CITY OF ROANOKE

TRENT EVANS COX

Lic. No. 0402050823

3/4/22

PROFESSIONAL ENGINEER

27th ST SE SEWER RELOCATION

COVER

By									
Date									
Description									
Rev									

Designed: AJC, NSS

Drawn: AJC

Checked: NSS

Approved: TEC

Date: FEB 2022

Project: SMALL SEWER

1

Sheet 1 of 3