

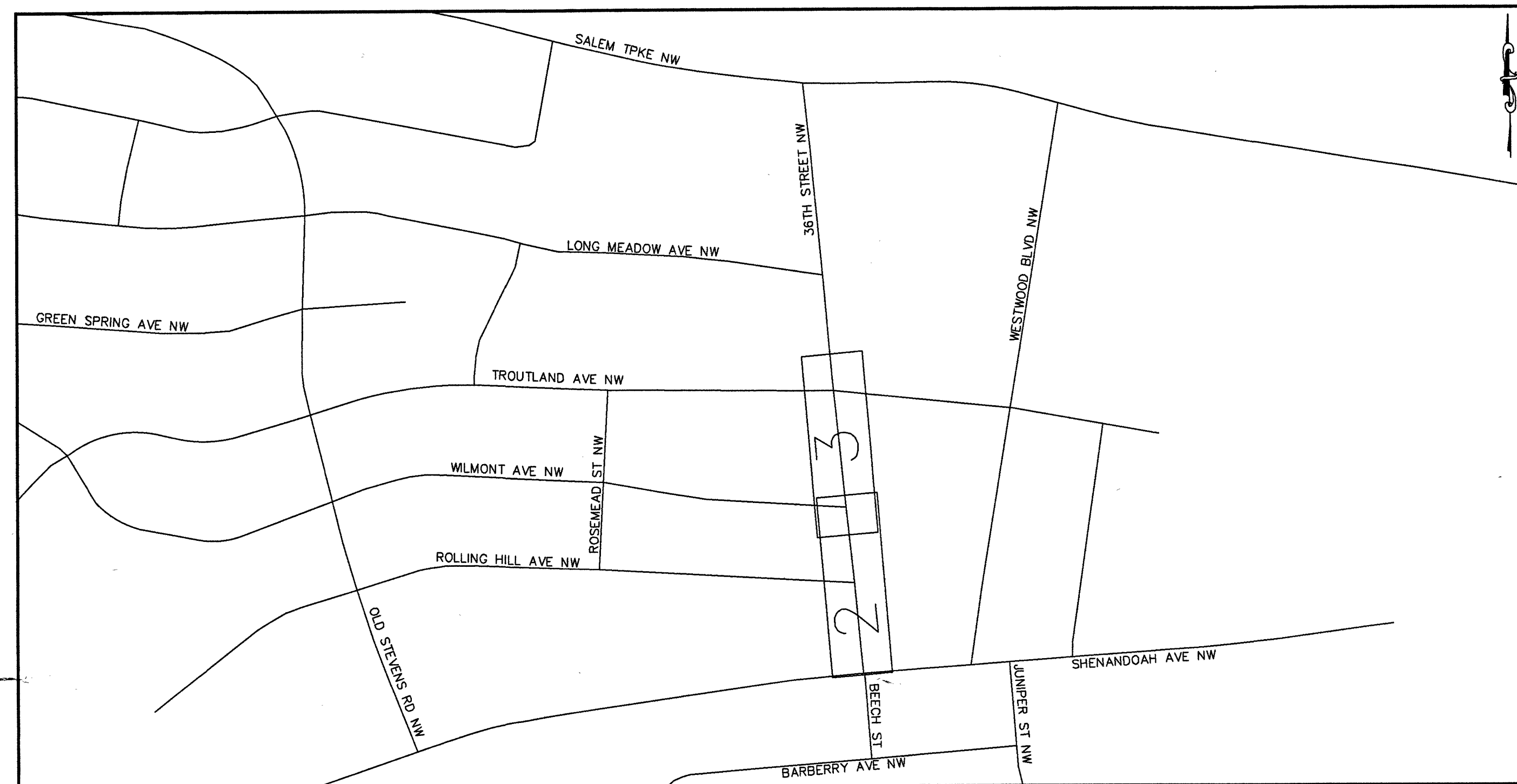
36TH STREET WATER LINE REPLACEMENT

INDEX MAP

SHEET INDEX

LEGEND (EXISTING)	
WATER/FORCEMAIN	STORM
VALVE	DROP INLET
AIR RELEASE	LARGE CURB INLET
BLOW-OFF/ FLUSHING ASSEMBLY	SMALL CURB INLET
SINGLE METER BOX	MANHOLE
DOUBLE METER BOX	
FIRE HYDRANT	
WELL	
SEWER	OTHER
MANHOLE	POWER POLE
CLEAN OUT	POWER POLE WITH GUY WIRE
GAS VALVE	LAMP POST
UTILITY PEDESTAL	TRAFFIC POLE
MAILBOX	SIGN

 DENOTES VALVE TO BE ABANDONED



1	COVER
2-3	PLAN & PROFILE
4	PROFILES
5-7	DETAILS
8	TRAFFIC PLAN

APPROVED FOR CONSTRUCTION:

WWVA CONTACT:

PROJECT MANAGER: _____

ENGINEERING COORD: _____

PROJECT INSPECTOR: _____

THIS PROJECT IS EXEMPT FROM EROSION AND SEDIMENT CONTROL PLAN REQUIREMENTS PURSUANT ARTICLES § 62.1-44.15:51 & § 62.1-44.15:55 OF THE CODE OF VIRGINIA.
SOME EROSION AND SEDIMENT CONTROL MEASURES HAVE BEEN SHOWN ON THIS PLAN AT THE DISCRETION OF THE DESIGNER.

EROSION AND SEDIMENT CONTROL MEASURES:
UNLESS OTHERWISE INDICATED, ALL VEGETATIVE AND STRUCTURAL EROSION AND SEDIMENT CONTROL PRACTICES SHALL BE CONSTRUCTED AND MAINTAINED ACCORDING TO MINIMUM STANDARDS AND SPECIFICATIONS OF THE "VIRGINIA EROSION AND SEDIMENT CONTROL HANDBOOK, THIRD EDITION" (VESCH). THE MINIMUM STANDARDS OF THE VESCH SHALL BE ADHERED TO UNLESS OTHERWISE DIRECTED BY THE LOCAL PROGRAM ADMINISTRATOR.

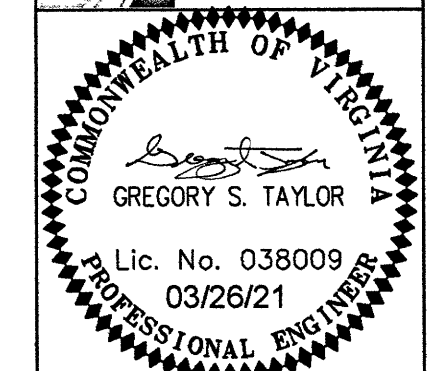
 STORM DRAIN INLET PROTECTION-VESCH STD. & SPEC. 3.07: A SEDIMENT FILTER OR AND EXCAVATED IMPOUNDING AREA AROUND A STORM DRAIN DROP INLET OR CURB INLET.

GENERAL NOTES:

- ALL CONSTRUCTION METHODS AND MATERIALS SHALL CONFORM TO THE LATEST EDITION OF THE DESIGN AND CONSTRUCTION STANDARDS AND SPECIFICATIONS OF THE WESTERN VIRGINIA WATER AUTHORITY (WWVA) AVAILABLE AT WWW.WESTERNVAVATER.ORG OR BY CONTACTING THE WWVA AT 540-853-5700. THE PROJECT SHALL ALSO COMPLY WITH THE GOVERNING JURISDICTION'S STANDARDS AND OTHER AGENCY STANDARDS (E.G., VDOT, DEQ, DCR, VDH, ETC.) WHERE APPLICABLE.
- WHILE NOT REQUIRED ON ALL WWVA PROJECTS, WATER SERVICE AND METER REPLACEMENT SHOULD BE DISCUSSED PRIOR TO CONSTRUCTION. THE WWVA WILL INSTALL ALL NEW WATER METERS AND REMOVE ALL EXISTING WATER METERS. THE CONTRACTOR SHALL INSTALL COMPLETE NEW WATER SERVICES INCLUDING THE METER SETTER AND BOX IN CONFORMANCE WITH THE WWVA'S STANDARDS. FOLLOWING METER REPLACEMENT BY THE WWVA, THE CONTRACTOR SHALL DEMOLISH THE EXISTING WATER METER SETTER AND BOX. THE CONTRACTOR SHALL COORDINATE EXISTING METER REMOVAL AND NEW METER INSTALLATION DIRECTLY WITH THE WWVA. THE CONTRACTOR SHALL PROVIDE AT LEAST THREE (3) BUSINESS DAYS ADVANCE NOTICE TO THE WWVA PRIOR TO NEEDING METER INSTALLATIONS. THE CONTRACTOR SHALL SEQUENCE CONSTRUCTION ACTIVITY TO RECEIVE NEW METERS BEFORE CONTACTING THE WWVA FOR WATER METER REPLACEMENT.
- ALL CONNECTIONS TO EXISTING WATERLINES SHALL BE PERFORMED BY THE WWVA. THE CONTRACTOR SHALL PROVIDE FULL STAINLESS STEEL TAPPING SLEEVE(S) AND VALVE(S). THE CONTRACTOR SHALL EXCAVATE TO THE EXISTING WATERLINE, SHORE THE TRENCH PER OSHA REQUIREMENTS, CLEAN THE EXISTING WATERLINE, AND INSTALL THE TAPPING SLEEVE AND VALVE PRIOR TO THE WWVA PERFORMING THE TAP. THE CONTRACTOR SHALL NOTIFY THE WWVA INSPECTOR AT LEAST SEVENTY-TWO (72) HOURS PRIOR TO REQUIRING THE CONNECTION.
- ALL CONNECTIONS TO EXISTING SANITARY SEWERLINES SHALL BE PERFORMED BY THE WWVA. THE CONTRACTOR SHALL EXCAVATE TO THE EXISTING SEWERLINE, SHORE THE TRENCH PER OSHA REQUIREMENTS, AND CLEAN THE EXISTING SEWERLINE PRIOR TO THE WWVA PERFORMING THE TAP. THE CONTRACTOR SHALL NOTIFY THE WWVA INSPECTOR AT LEAST SEVENTY-TWO (72) HOURS PRIOR TO REQUIRING THE CONNECTION.
- THE CONTRACTOR SHALL PERFORM ALL MANHOLE CONNECTIONS. THE CORING AND BOOT INSTALLATION SHALL BE INSPECTED AND APPROVED BY AN WWVA CONSTRUCTION INSPECTOR PRIOR TO ACTIVATING SEWER SERVICE. THE CONTRACTOR SHALL CONTACT THE WWVA'S CONSTRUCTION INSPECTOR RESPONSIBLE FOR THE PROJECT AT LEAST ONE (1) DAY PRIOR TO INITIATING THE MANHOLE CONNECTION.
- PRIOR TO CONSTRUCTION IN THE RIGHT-OF-WAY, ALL APPLICABLE PERMIT(S) FROM THE GOVERNING JURISDICTION AND/OR AGENCY MUST BE OBTAINED AND A COPY KEPT ON THE PROJECT SITE.
- FOR PROJECTS REQUIRING TRAFFIC CONTROL IN THE CITY OF ROANOKE, NOTIFY TRANSPORTATION DIVISION MANAGER, DWAYNE D'ARDENNE, AT 540-853-2676 AT LEAST TWO WEEKS IN ADVANCE OF REQUIRING TRAFFIC CONTROL. FOR A LANE CLOSURE PERMIT IN THE CITY OF ROANOKE, CONTACT THE TRAFFIC ENGINEER, HONG LIU, AT 540-853-2686. IN ROANOKE, BOTETOURT OR FRANKLIN COUNTIES, TRAFFIC CONTROL REQUIREMENTS ARE APPROVED BY VDOT, PLEASE CONTACT THE LOCAL VDOT OFFICE FOR ADDITIONAL REQUIREMENTS. TRAFFIC CONTROL SHALL BE PROVIDED IN ACCORDANCE WITH THE MOST RECENT MUTCD MANUAL AND THE VDOT WORK AREA PROTECTION MANUAL UNLESS OTHERWISE SPECIFIED BY THE CITY.
- THE CONTRACTOR SHALL NOTIFY THE WWVA ENGINEERING COORDINATOR, BRIAN WHITENACK, AT 540-400-4079 AT LEAST THREE (3) DAYS PRIOR TO CONSTRUCTION.
- THE WWVA WILL SCHEDULE A PRE-CONSTRUCTION CONFERENCE AT LEAST ONE (1) DAY PRIOR TO ANY CONSTRUCTION.
- THE CONTRACTOR SHALL HAVE A VALID MISS UTILITY TICKET PRIOR TO EXCAVATION. CONTACT MISS UTILITY AT 1-800-552-7001.
- ALL EXISTING UTILITIES MAY NOT BE SHOWN OR MAY NOT BE SHOWN IN THEIR EXACT LOCATION. CONTRACTOR SHALL LOCATE ALL UTILITIES AND DETERMINE ALL INVERTS PRIOR TO CONSTRUCTION TO ALLOW FOR ADJUSTMENTS DUE TO CONFLICTS WITH OTHER UTILITIES. THE CONTRACTOR SHALL COMPLY WITH THE VIRGINIA STATE WATER WORKS REGULATIONS, SECTION 12VAC5-590-1150, AND THE VIRGINIA STATE SEWAGE COLLECTION AND TREATMENT REGULATIONS WHERE LINES CROSS.
- AN APPROVED SET OF PLANS AND PERMITS MUST BE AVAILABLE AT THE CONSTRUCTION SITE AT ALL TIMES.
- CONSTRUCTION DEBRIS SHALL BE CONTAINERIZED IN ACCORDANCE WITH THE VIRGINIA LITTER CONTROL ACT.
- THE CONTRACTOR'S CERTIFIED RESPONSIBLE LAND DISTURBER SHALL BE RESPONSIBLE TO IMPLEMENT ALL EROSION & SEDIMENT CONTROLS REQUIRED. ALL EROSION AND SEDIMENT CONTROL MEASURES MUST BE IN ACCORDANCE WITH THE LATEST EDITION OF THE VIRGINIA EROSION AND SEDIMENT CONTROL HANDBOOK AND SHALL BE INSTALLED PRIOR TO CONSTRUCTION. THE WWVA MAY REQUIRE CHANGES TO AN APPROVED PLAN IN THE FOLLOWING CASES WHERE INSPECTION HAS REVEALED THAT THE PLAN IS INADEQUATE TO SATISFY APPLICABLE REGULATIONS.
- THE CONTRACTOR SHALL PROVIDE ADEQUATE MEANS OF CLEANING ALL VEHICLES AND EQUIPMENT PRIOR TO ENTERING PUBLIC STREETS. IT IS THE CONTRACTOR'S RESPONSIBILITY TO ENSURE THAT THE STREETS ARE KEPT IN A CLEAN, MUD- AND DUST-FREE CONDITION AT ALL TIMES.
- FIELD CHANGES SHALL BE APPROVED BY THE WWVA'S ENGINEERING DIVISION PRIOR TO SUCH CONSTRUCTION. NO ADDITIONAL PAYMENTS SHALL BE MADE TO CONTRACTOR FOR WORK PERFORMED WITHOUT PRIOR APPROVAL FROM WWVA'S PROJECT MANAGER.
- THE CONTRACTOR SHALL MAKE PROVISIONS TO PROVIDE ACCESS TO ALL PROPERTIES DURING CONSTRUCTION AND SHALL MAINTAIN SAFE ACCESSIBILITY TO FIRE HYDRANTS AT ALL TIMES.
- THE CONTRACTOR SHALL BE RESPONSIBLE FOR LOCATING AND UNCOVERING ALL MANHOLES AFTER PAVING. MANHOLE RIMS SHALL BE INSTALLED TO GRADE AND FLUSH WITH THE FINAL PAVEMENT.
- UNREPAIRED ROADWAYS OPENED TO TRAFFIC SHALL HAVE, AT A MINIMUM, COMPACTED AGGREGATE MATERIAL VDOT 21A OR 21B FLUSH WITH THE ADJACENT ROADWAY SURFACE AND SHALL BE INSPECTED AND REPAIRED ON A DAILY BASIS. SOME AREAS MAY REQUIRE A TEMPORARY PATCH UNTIL FINAL PAVING CAN BE COMPLETED.
- THE CONTRACTOR SHALL NOT EXCAVATE MORE TRENCH LENGTH THAN CAN BE RESTORED WITHIN THE SAME WORK DAY. ALL TRENCHES SHALL BE BACKFILLED OR PLATED AT THE END OF EACH WORK DAY OR WHEN THE CONTRACTOR IS NOT ON SITE.
- THE CONTRACTOR SHALL SUPPLY THE WWVA WITH CORRECT AS-BUILT PLANS (COMPLETED BY A LICENSED ENGINEER & SURVEYOR) BEFORE SUBSTANTIAL COMPLETION WILL BE GRANTED.
- HORIZONTAL & VERTICAL BENDS SHOWN IN THE PLAN ARE APPROXIMATE. CONTRACTOR TO BE AWARE THAT ALL HORIZONTAL AND/OR VERTICAL BEND FITTINGS MAY NOT BE SHOWN IN THE PLANS.
- CONTRACTOR SHALL RECORD VERTICAL AS-BUILT DATA TO INCLUDE DEPTH OF WATER MAIN, WATER MAIN FEATURES & ALL UTILITY CROSSINGS.

Install Contractor	WWVA CIP-1	
Construction Start Date	8/20/2021	
Completion Date	11/26/2021	
	Water Main(s)	
Manufacturer	U.S Pipe	
Diameter	12" + 8"	
Pipe Class	C151 Class 356	
Material	DIP	
Comments	978' -12" DIP / 223' -8" DIP	
	Water Service(s)	
Manufacturer	Endot	
Diameter	1"	
Pipe Class	C151 Class 250	
Material	PVC	
Comments	16-1" service	
	Water Valve(s) 1	Water Valve(s) 2
Manufacturer	AFC	AFC
Valve Type	Gate	Gate
Diameter	12"	8"
Direction to Open / Turns to Close	Right	Right
Comments	3 -12"	4 -8"
	Water Valve (s) 3	Water Valve (s) 4
Manufacturer		
Valve Type		
Diameter		
Direction to Close / Turns to Close		
Comments		
	Hydrant(s)	
Authority ID #		
Manufacturer	Dorling	
Model	B84B	
Cast Date	2021	
Static Pressure	36" St -100 psi Rolling Hill -90 psi Troutland -90 psi	
Comments		

WESTERN VIRGINIA
WATER AUTHORITY
ENGINEERING SERVICES
601 S JEFFERSON ST, SUITE 300
ROANOKE, VA 24011
540-853-5700



GREGORY S. TAYLOR
Lic. No. 038009
03/26/21
PROFESSIONAL ENGINEER

36TH STREET WATER LINE REPLACEMENT

COVER

By					
Date					
Description					
Rev					

Designed: AJC, DRJ
Drawn: AJC
Checked: DRJ, GST
Approved: GST
Date: MAR 26, 2021
Project: WCIP-168

1
Sheet 1 of 8