

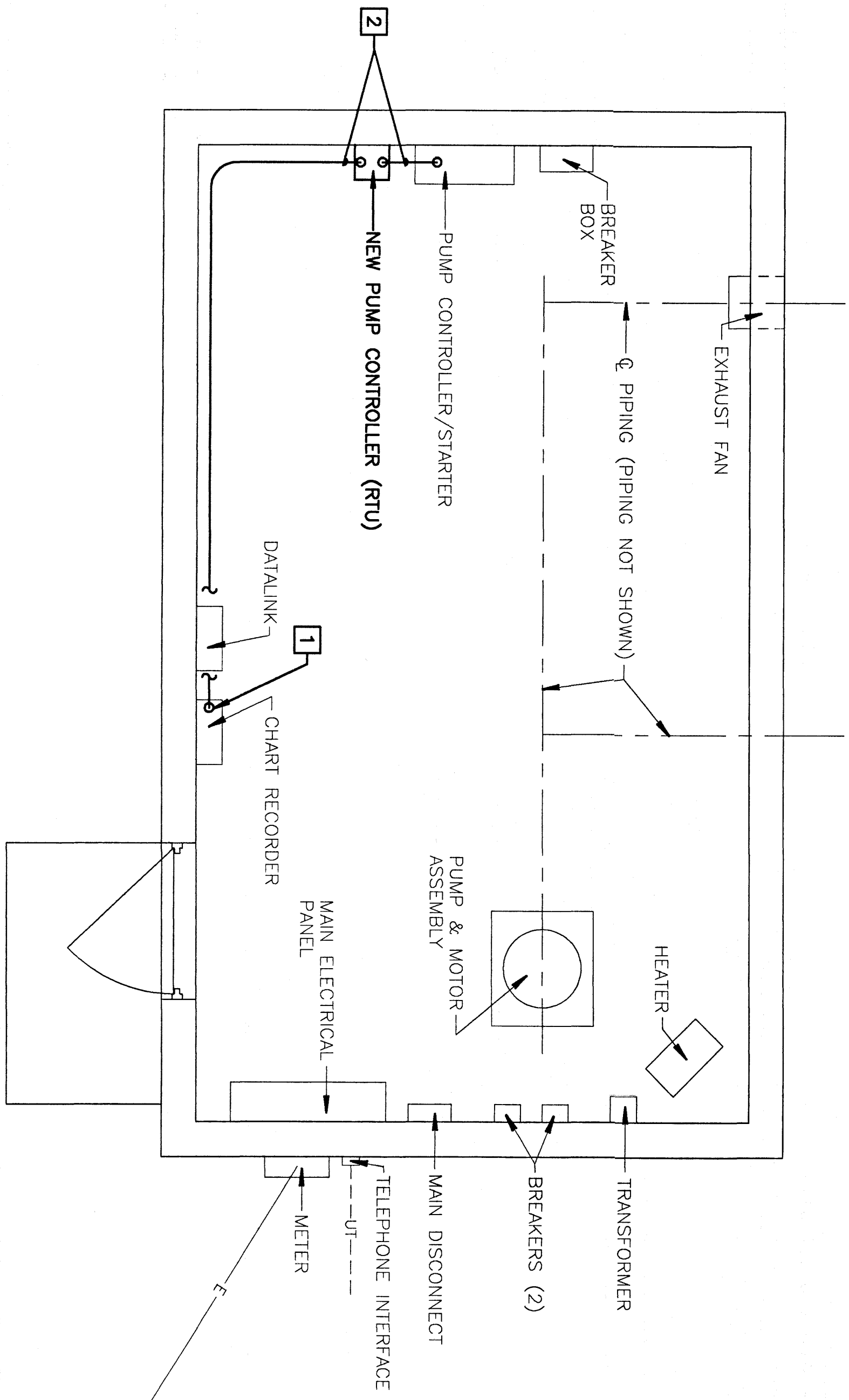
CRAIG AVENUE - PUMP STATION #1

1/2" = 1'-0"

ELECTRICAL NOTES:

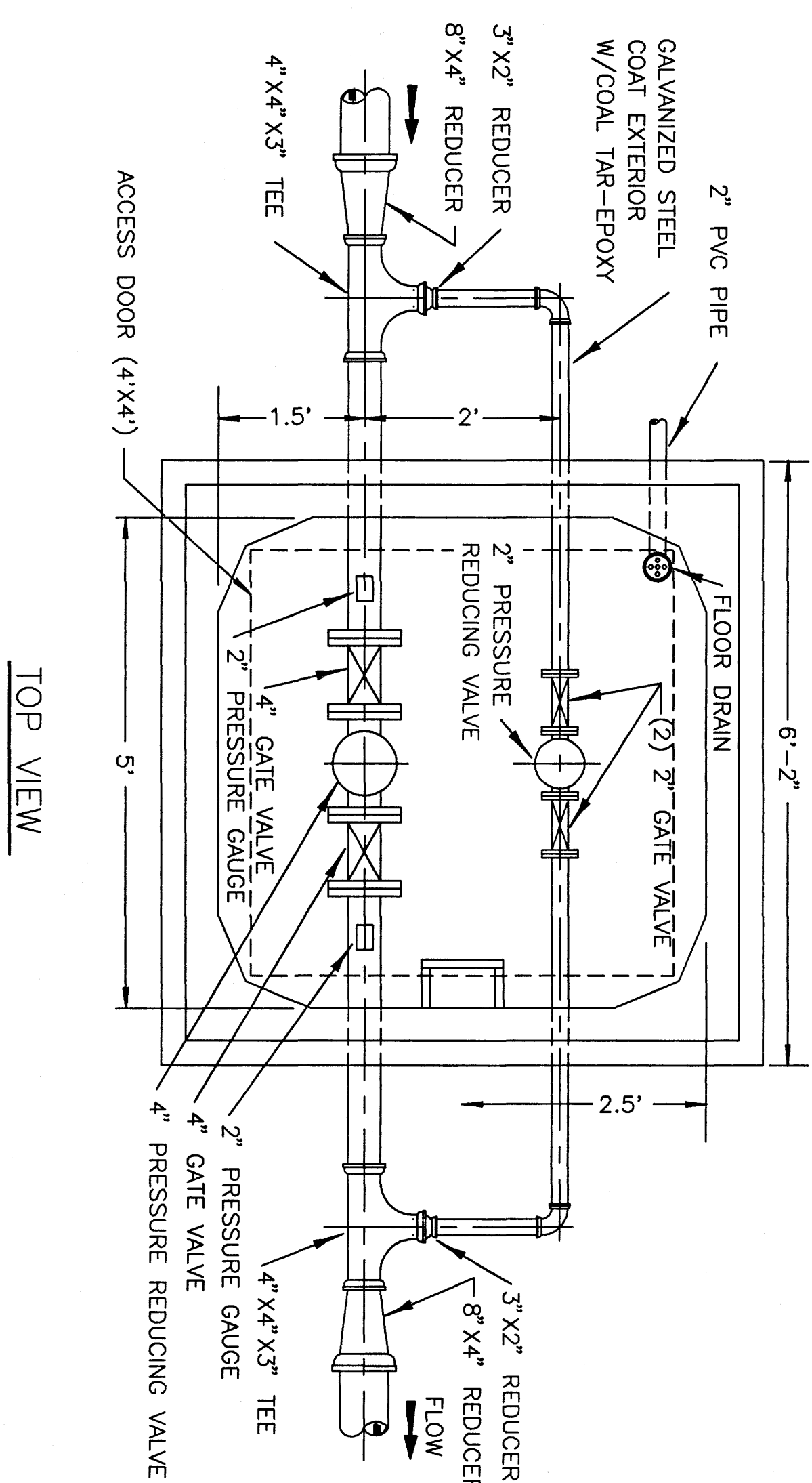
- 1 EXTEND EXIST. TELEPHONE LINES (TELEMETRY) TO NEW RECEIVER.
- 2 NEW POWER AND CONTROL WIRING IN CONDUIT AS REQUIRED.

NOTE: SEE VICINITY MAP FOR LOCATION.



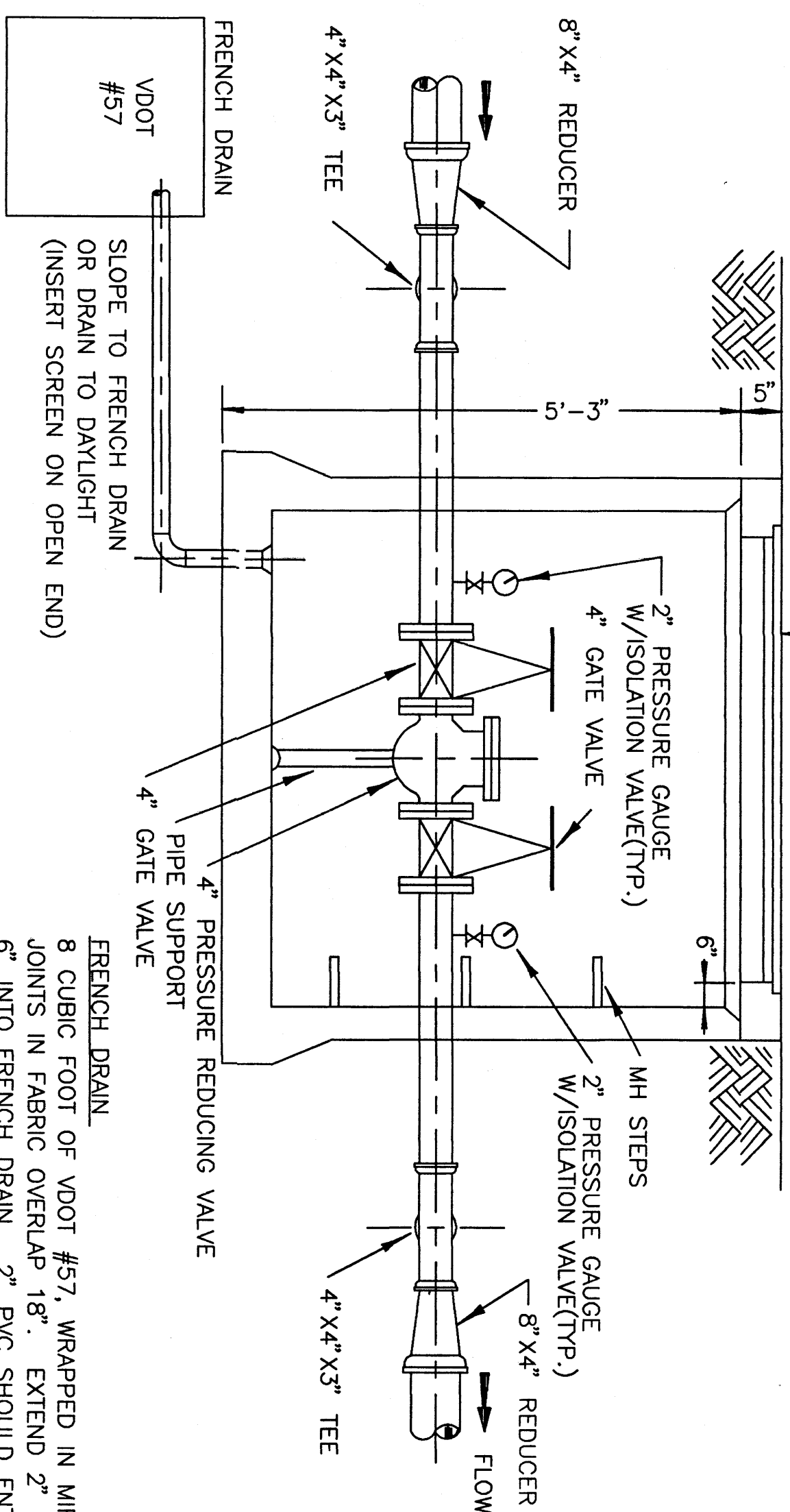
CHESTNUT STREET - PUMP STATION #2

1/2" = 1'-0"



TOP VIEW

NOTE: CONTRACTOR MAY USE 5" DIA. TUB BOTTOM MANHOLE W/ FLAT TOP AS AN ALTERNATE

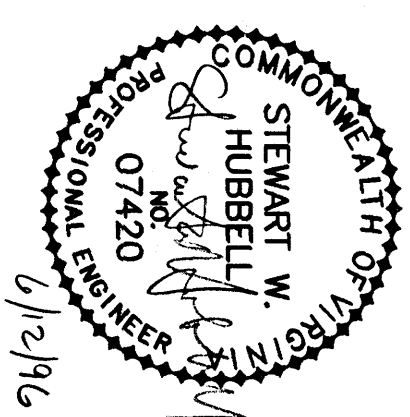


SIDE VIEW

PRESSURE REDUCING STATION (TYP. OF 3)

NOT TO SCALE

FRENCH DRAIN.  
8 CUBIC FOOT OF VDOT #57, WRAPPED IN MIRAFI-140,  
JOINTS IN FABRIC OVERLAP 18". EXTEND 2" PVC  
6" INTO FRENCH DRAIN. 2" PVC SHOULD ENTER TOP  
QUARTER OF FRENCH DRAIN.



TELEMETRY AND PRV DETAILS		TELEMETRY DETAILS	
REV	DATE	DESCRIPTION	BY
A	5/30/96	DATE	JBO SWH
DSGN	JBO	THIRD STREET WATER TANK AND WATER MAIN PROJECTS	APP
DRAWN	JMC		
CHKD	SWH		
TOWN OF VINTON, VIRGINIA		TELEMETRY DETAILS	
SCALE: AS NOTED		COM. 145B	
DATE: MAY, 1996		SHEET 13	

**Mattern & Craig**  
CONSULTING ENGINEERS & ARCHITECTS  
1000 E. MAIN STREET, SUITE 100  
VINTON, VIRGINIA 22640  
PHONE: 813