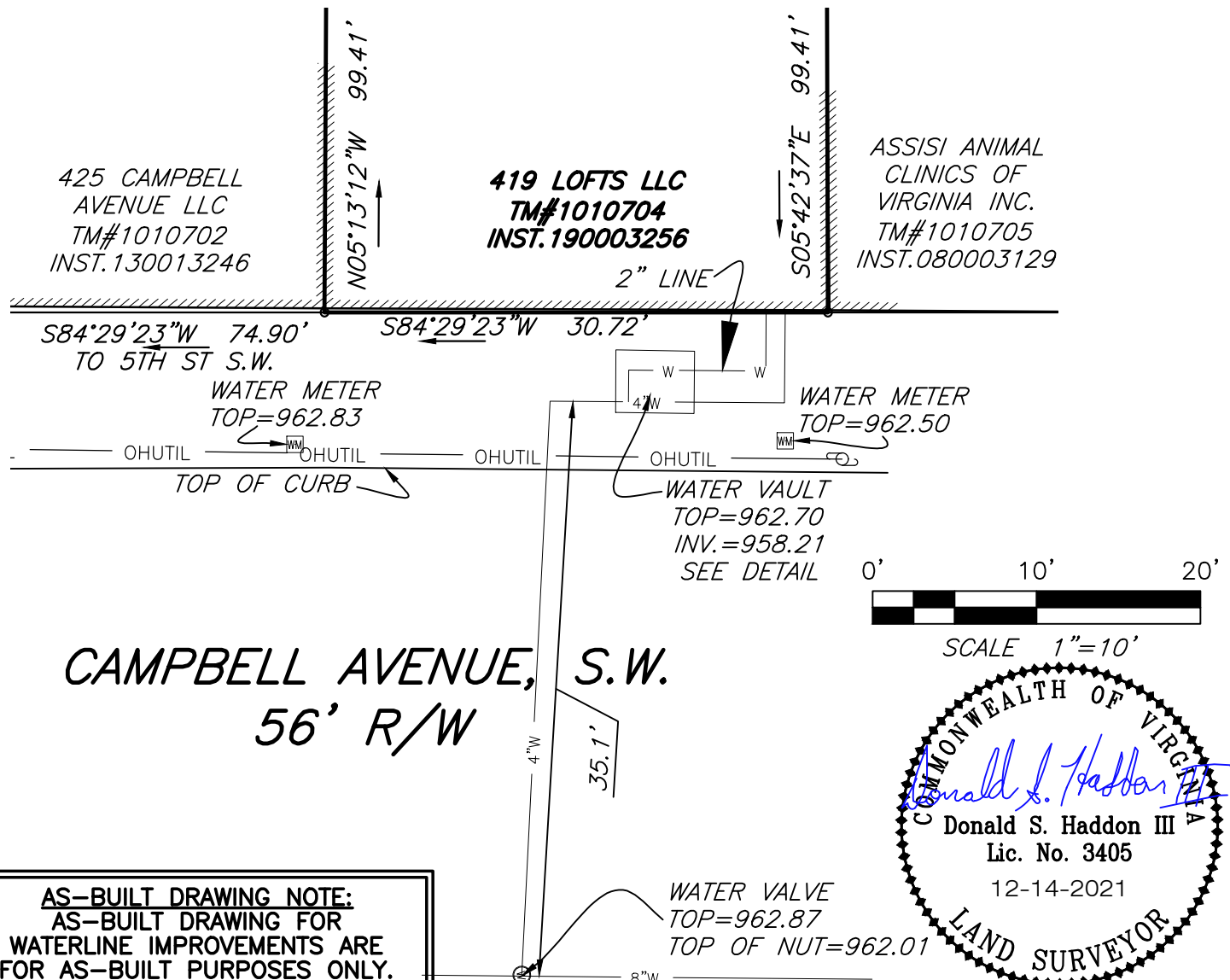


THE INTENT OF THIS EXHIBIT IS TO SHOW THE LOCATION OF A WATER VAULT FOR AS-BUILT PURPOSES AND IS NOT INTENDED TO REPRESENT AN A PHYSICAL IMPROVEMENTS SURVEY. THIS EXHIBIT WAS PREPARED WITHOUT THE BENEFIT OF A TITLE REPORT AND IS SUBJECT TO INFORMATION WHICH MAY BE DISCLOSED BY SUCH. NOT ALL EASEMENTS OR IMPROVEMENTS MAY BE SHOWN.

GRID NORTH -- NAD 83
VA STATE PLANE -- SOUTH ZONE
VERTICAL DATUM -- NAVD 1988

DETAIL N.T.S.



CAMPBELL AVENUE, S.W.
56' R/W

AS-BUILT DRAWING NOTE:
AS-BUILT DRAWING FOR WATERLINE IMPROVEMENTS ARE FOR AS-BUILT PURPOSES ONLY. NO IMPROVEMENTS OTHER THAN WATER STRUCTURES WERE AS-BUILT OR INDICATED AS SUCH ON THIS EXHIBIT. UNDERGROUND PIPING WAS NOT LOCATED. LOCATION SHOWN IS APPROXIMATE BASED ON SURFACE FEATURES AND INFORMATION PROVIDED BY THE CONTRACTOR.

AS-BUILT WATERLINE EXHIBIT FOR
**WESTERN VIRGINIA
WATER AUTHORITY**

419 CAMPBELL AVENUE, S.W.

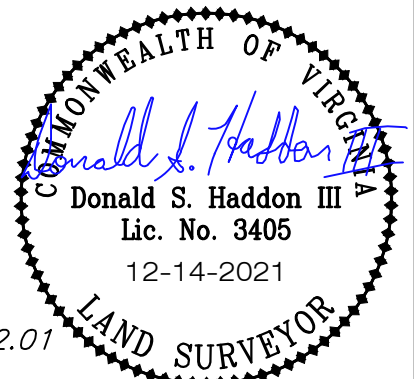
419 LOFTS

CITY OF ROANOKE, VIRGINIA

DATED DECEMBER 08, 2021

JOB #03200110.00

SCALE: 1" = 10'



REVISED 12-13-21
ADD CONTRACTOR INFO
REVISED 12-14-21
ADD VALVE INFO.



**BALZER
& ASSOCIATES**

DRAWN BY: DSH
CHECKED BY: JAP

PLANNERS / ARCHITECTS / ENGINEERS / SURVEYORS
ROANOKE / RICHMOND / NEW RIVER VALLEY / SHENANDOAH VALLEY / LYNCHBURG
1208 Corporate Circle / Roanoke, Virginia 24018 / Phone (540) 772-9580 / www.balzer.cc