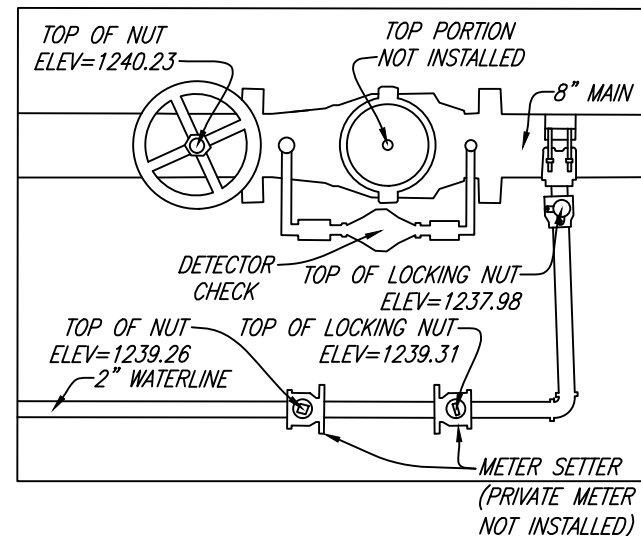


**AS-BUILT DRAWING NOTE:**  
AS-BUILT DRAWING FOR  
WATERLINE IMPROVEMENTS ARE FOR  
AS-BUILT PURPOSES ONLY. NO  
IMPROVEMENTS OTHER THAN WATER  
VAULT WERE AS-BUILT OR  
INDICATED AS SUCH ON THIS  
EXHIBIT. UNDERGROUND PIPING WAS  
NOT LOCATED. LOCATION SHOWN IS  
APPROXIMATE BASED ON SURFACE  
FEATURES AND INFORMATION  
PROVIDED BY THE CONTRACTOR.

VERTICAL DATUM NAVD 1988  
NAD 83 - GRID NORTH  
VA STATE PLANE - SOUTH ZONE



AS-BUILT WATER VAULT  
EXHIBIT FOR  
**WESTERN VIRGINIA  
WATER AUTHORITY**  
5051 BENOIS ROAD  
CAVE SPRING MAGISTERIAL DISTRICT  
ROANOKE COUNTY, VIRGINIA  
DATED OCTOBER 31, 2022  
JOB #04180085.01  
SCALE: 1" = 20'



LEGEND	
○	DEEDED CORNER
●	IRON PIN FOUND
WM	WATER METER
⊕	FIRE HYDRANT
WV	WATER VALVE

**PLANNERS / ARCHITECTS / ENGINEERS / SURVEYORS**  
ROANOKE / RICHMOND / NEW RIVER VALLEY / SHENANDOAH VALLEY  
1208 Corporate Circle / Roanoke, Virginia 24018 / Phone (540) 772-9580 / www.balzer.cc

THE INTENT OF THIS EXHIBIT IS TO SHOW THE LOCATION OF A  
WATER VAULT FOR AS-BUILT PURPOSES AND IS NOT INTENDED  
TO REPRESENT A PHYSICAL IMPROVEMENTS SURVEY.

THIS EXHIBIT WAS PREPARED WITHOUT THE BENEFIT OF A TITLE  
REPORT AND IS SUBJECT TO INFORMATION WHICH MAY BE DISCLOSED  
BY SUCH. NOT ALL EASEMENTS OR IMPROVEMENTS MAY BE SHOWN.

DRAWN BY: EJP  
CHECKED BY: DSH

