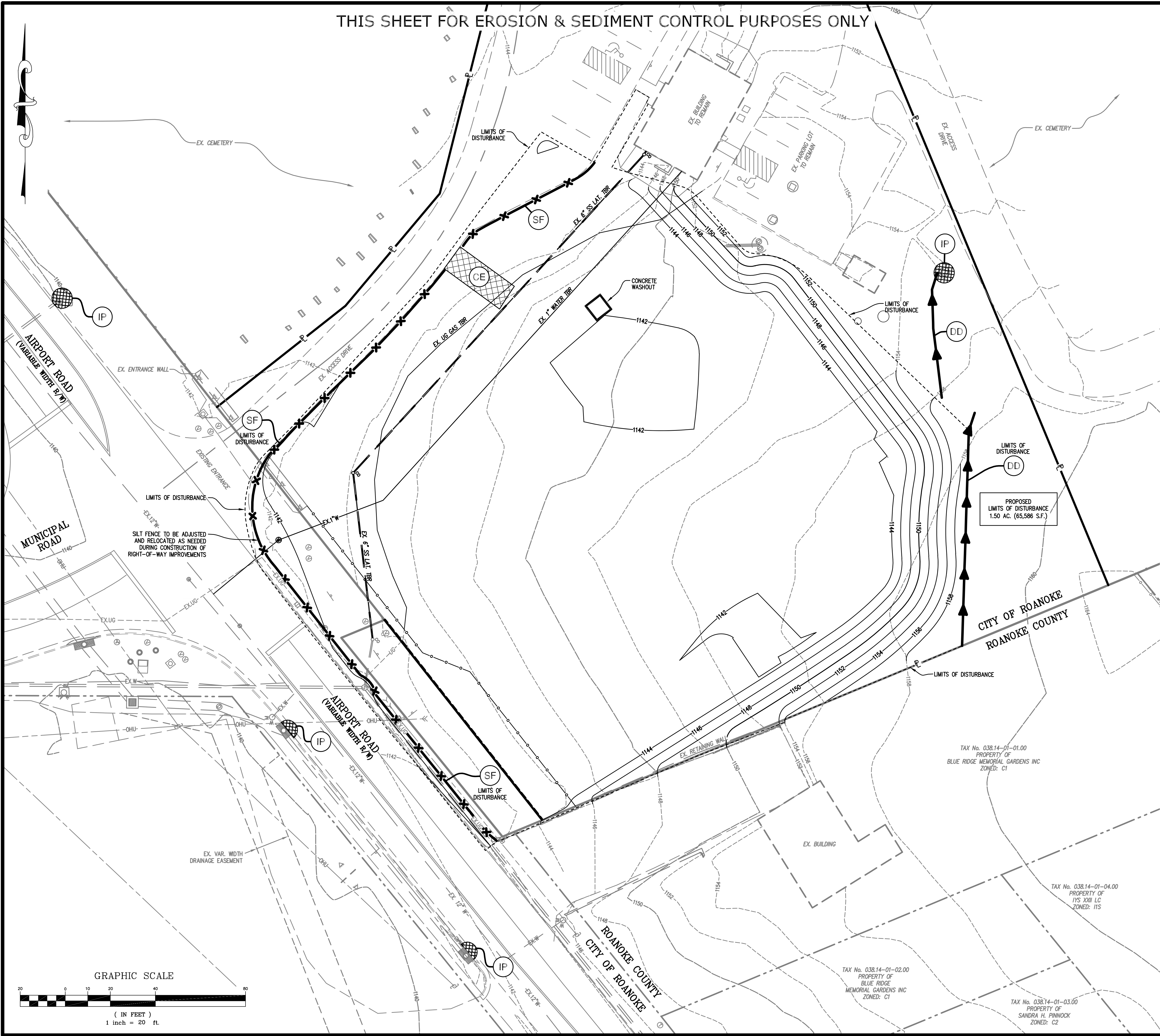


e:\larc\autocad\drawings\2021\2021-009\01-cad\01-engineering\02-design\21009-comp.dwg 21009-comp-07-ec01.plt

THIS SHEET FOR EROSION & SEDIMENT CONTROL PURPOSES ONLY



CONSTRUCTION SEQUENCE

PHASE I:

1. THE CONTRACTOR'S CERTIFIED RESPONSIBLE LAND DISTURBER (RLD) SHALL BE NAMED AND THE CONTRACTOR SHALL OBTAIN ALL REQUIRED PERMITS.
2. THE CONSTRUCTION PROCESS SHOULD BE SEQUENCED AS MUCH AS POSSIBLE SO THAT EACH AREA IS SEEDED AND STABILIZED PRIOR TO BEGINNING GRADING OPERATIONS IN ANOTHER AREA.
3. INSTALL CONSTRUCTION ENTRANCE AS THE FIRST STEP IN THE CONSTRUCTION PROCESS. PRIOR TO BEGINNING GRADING OPERATIONS, INSTALL PERIMETER CONTROL MEASURES INCLUDING SILT FENCE AND UPGRADIENT DIVERSION DIKES.
4. PERFORM CLEARING AND GRUBBING OPERATIONS.
5. COMMENCE ROUGH GRADING OF THE SITE AND REMOVE EXISTING UTILITIES AS INDICATED ON PLAN. ADJUST AND SUPPLEMENT EROSION CONTROL MEASURE AS NECESSARY AS GRADING OPERATIONS PROCEED.
6. TRANSITION TO PHASE II EROSION & SEDIMENT CONTROL PLAN AS ROUGH GRADING IS SUFFICIENT FOR STORM DRAIN INSTALLATION.

| NO.  | TITLE                                  | KEY | SYMBOL |
|------|--|-----|--------|
| 3.02 | TEMPORARY GRAVEL CONSTRUCTION ENTRANCE | CE  |        |
| 3.05 | SILT FENCE                             | SF  |        |
| 3.09 | DIVERSION DIKE                         | DD  |        |

ABBREVIATIONS

|         |                          |
|---------|--------------------------|
| R/W     | RIGHT OF WAY             |
| HDCP    | HANDICAP                 |
| VAR.    | VARIABLE                 |
| EXIST.  | EXISTING                 |
| D.B.    | DEED BOOK                |
| P.B.    | PLAT BOOK                |
| PG.     | PAGE                     |
| INST. # | INSTRUMENT NUMBER        |
| TYP.    | TYPICAL                  |
| ROP     | REINFORCED CONCRETE PIPE |
| SD      | STORM DRAIN              |
| RL      | ROOF LEADER              |
| SDCO    | STORM DRAIN CLEANOUT     |
| SDMH    | STORM DRAIN MANHOLE      |
| SS      | SANITARY SEWER           |
| SSMH    | SANITARY SEWER MANHOLE   |
| SSCO    | SANITARY SEWER CLEANOUT  |
| W       | WATER LINE               |
| SP      | SPOT ELEVATION           |
| TC      | TOP OF CURB              |
| EP      | EDGE OF PAVEMENT         |
| BW      | BOTTOM OF WALL           |
| TW      | TOP OF WALL              |
| CO      | CLEANOUT                 |
| TBR     | TO BE REMOVED            |

LEGEND

| ITEM                          | EXISTING | PROPOSED  |
|-------------------------------|----------|-----------|
| PAVEMENT (STANDARD)           |          |           |
| CONCRETE                      |          |           |
| CONCRETE CURB (CG-2)          |          |           |
| CONCRETE CURB & GUTTER (CG-6) |          |           |
| STORM DRAIN LINE              |          |           |
| STORM DRAIN MANHOLE           |          |           |
| SANITARY SEWER LINE           |          |           |
| WATERLINE                     |          |           |
| UTILITY POLE                  |          |           |
| OVERHEAD ELECTRIC LINE        |          |           |
| OVERHEAD TELEPHONE LINE       |          |           |
| INDEX CONTOURS                |          |           |
| INTERMEDIATE CONTOURS         |          |           |
| UNDERGROUND GAS               |          |           |
| OVERHEAD ELECTRIC             |          |           |
| SPOT ELEVATION                | +1021.5  | SP=1021.5 |

City of Roanoke  
Planning, Building, & Development

COMPREHENSIVE DEVELOPMENT PLAN

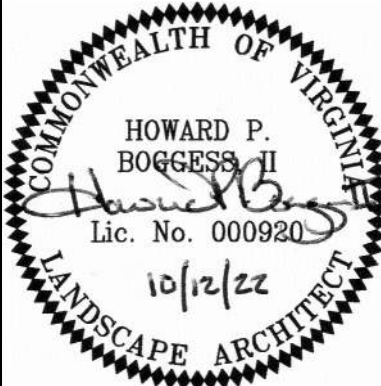
APPROVED

by Aaron Cypher 11/22/2022

Lumsden Associates, P.C.  
ENGINEERS | SURVEYORS | PLANNERS



PHONE: (540) 774-4411  
FAX: (540) 772-9445  
WWW.LUMSDENPC.COM



EROSION & SEDIMENT  
CONTROL PLAN  
PHASE I

PRELIMINARY SITE PLAN  
BLUE RIDGE MEMORIAL GARDENS  
LOCATED AT  
5721 AIRPORT ROAD, N.W.  
TAX PARCEL ID: 06630103  
CITY OF ROANOKE, VIRGINIA

| NO. | DATE | DESCRIPTION |
|-----|------|-------------|
| 1   |      |             |
| 2   |      |             |
| 3   |      |             |
| 4   |      |             |
| 5   |      |             |

DATE: October 12, 2022

SCALE: 1" = 20'

COMMISSION NO: 21-009

SHEET 7 OF 12