

FIRE NOTES

FIRE DEPARTMENT CONNECTIONS SHALL BE IDENTIFIED BY AN APPROVED SIGN MOUNTED ON THE STREET FRONT, ON THE SIDE OF THE BUILDING, OR DIRECTLY ADJACENT TO A FREESTANDING FIRE DEPARTMENT CONNECTION. FIRE DEPARTMENT CONNECTION SIGNAGE SHALL BE CONSTRUCTED IN ACCORDANCE WITH APPENDIX A (CALL THIS OFFICE IF YOU NEED THE APPENDIX A DESIGN) AND SHALL: BE RED IN COLOR AND BE AT LEAST 18 INCHES BY 24 INCHES IN SIZE. HAVE "FDC" IN WHITE RETROFLECTIVE LETTERS NO LESS THAN SIX INCHES IN HEIGHT. SIGNAGE MUST INDICATE THE BUILDING OR PORTION THEREOF SERVED BY THE FIRE DEPARTMENT CONNECTION WHEN THE FIRE DEPARTMENT CONNECTION IS REMOTELY LOCATED, THE BUILDING IS SERVED BY MULTIPLE FIRE DEPARTMENT CONNECTIONS, OR WHEN REQUIRED BY THE FIRE MARSHAL. THIS INFORMATION SHALL BE PROVIDED IN WHITE RETROREFLECTIVE LETTERS NO LESS THAN TWO INCHES IN HEIGHT. ADDITIONAL SIGNAGE MAY BE REQUIRED WHEN THE FIRE DEPARTMENT CONNECTION IS NOT VISIBLE TO APPROACHING FIRE APPARATUS ON THE ADDRESS SIDE OF THE BUILDING OR WHEN OTHERWISE REQUIRED BY THE FIRE MARSHAL. THIS SIGNAGE WILL BE CONSTRUCTED SIMILARLY TO THE SIGNAGE DESCRIBED ABOVE AND IN APPENDIX A, WITH THE ADDITION OF AN ARROW INDICATING THE LOCATION OF THE FIRE DEPARTMENT CONNECTION IN RELATION TO THE ADDRESS SIDE OF THE BUILDING.

FIRE DEPARTMENT KEY BOXES SHALL BE REQUIRED WHENEVER: ( PLEASE SEE WWW.KNOXBOX.COM )

- A PROPOSED BUILDING WILL HAVE A FIRE ALARM SYSTEM OR FIRE SPRINKLER SYSTEM;
- A PROPOSED BUILDING WILL HAVE AN ELEVATOR;

KEY BOXES: SIZE, LOCATION, AND INSTALLATION

THE PROVISIONS OF THIS SECTION ARE A MINIMUM REQUIREMENT THAT MAY BE SUPERSEDED DURING THE COMPREHENSIVE PLANNING PROCESS. IN SOME CASES, THE FIRE MARSHAL OR HIS/HER DESIGNEE MAY ACCEPT PERFORMANCE-BASED ALTERNATIVES OR REQUIRE A GREATER LEVEL OF BUILDING ACCESS FOR LIFESAVING OR FIREFIGHTING PURPOSES.

- THE SIZE OF THE REQUIRED KEY BOX IS DEPENDENT ON BUILDING SIZE AND/OR CONFIGURATION:
  - LESS THAN SEVEN STORIES, LESS THAN 50,000 SQ FT: KNOX 3200 SERIES
  - LESS THAN SEVEN STORIES, GREATER THAN 50,000 SQ FT: KNOX 4400 SERIES
  - HIGH-RISE BUILDING: KNOX 4400 SERIES
- ALL KEY BOXES SHALL BE OF THE HINGED TYPE; "LIFT-OFF" LIDS ARE NOT PERMITTED.
- KEY BOXES SHALL BE LOCATED AT THE MAIN ENTRANCE TO THE BUILDING OR OTHER LOCATION APPROVED BY THE FIRE MARSHAL OR HIS/HER DESIGNEE. KEY BOXES ARE PREFERRED TO BE AT A HEIGHT OF SIX (6) FEET ABOVE FINISHED GRADE, BUT MUST BE NO LOWER THAN FIVE (5) FEET OR NO HIGHER THAN SIX (6) FEET ABOVE FINISHED GRADE. ALL MEASUREMENTS SHALL BE TO THE CENTERLINE OF THE BOX.

KEY BOXES: CONTENTS

EACH KEY SET MUST INCLUDE:

- KEYS TO PROVIDE ACCESS TO ALL PORTIONS OF THE BUILDING
- ONE (1) ELECTRICAL PANEL KEY
- IF THE BUILDING IS EQUIPPED WITH A FIRE ALARM SYSTEM: ONE (1) FIRE ALARM KEY
- IF THE BUILDING IS EQUIPPED WITH AN ELEVATOR: ONE (1) ELEVATOR KEY

THE FOLLOWING NUMBER OF KEY SETS SHALL BE REQUIRED BASED ON THE BUILDING SIZE AND/OR CONFIGURATION:

- SINGLE STORY, LESS THAN 50,000 SQ FT: ONE SET
- SINGLE STORY, GREATER THAN 50,000 SQ FT: THREE SETS
- TWO TO SIX STORIES, LESS THAN 50,000 SQ FT: TWO SETS
- TWO TO SIX STORIES, GREATER THAN 50,000 SQ FT: THREE SETS
- HIGH-RISE BUILDING/GREATER THAN SEVEN STORIES: FIVE SETS

THE FIRE MARSHAL OR HIS/HER DESIGNEE MAY REQUIRE A DIFFERENT NUMBER OF KEY SETS DEPENDENT ON THE BUILDING SIZE, CONFIGURATION, OR TO PROVIDE A GREATER LEVEL OF BUILDING ACCESS FOR LIFESAVING OR FIREFIGHTING PURPOSES.

ELEVATOR KNOX BOXES: LOCATION AND INSTALLATION

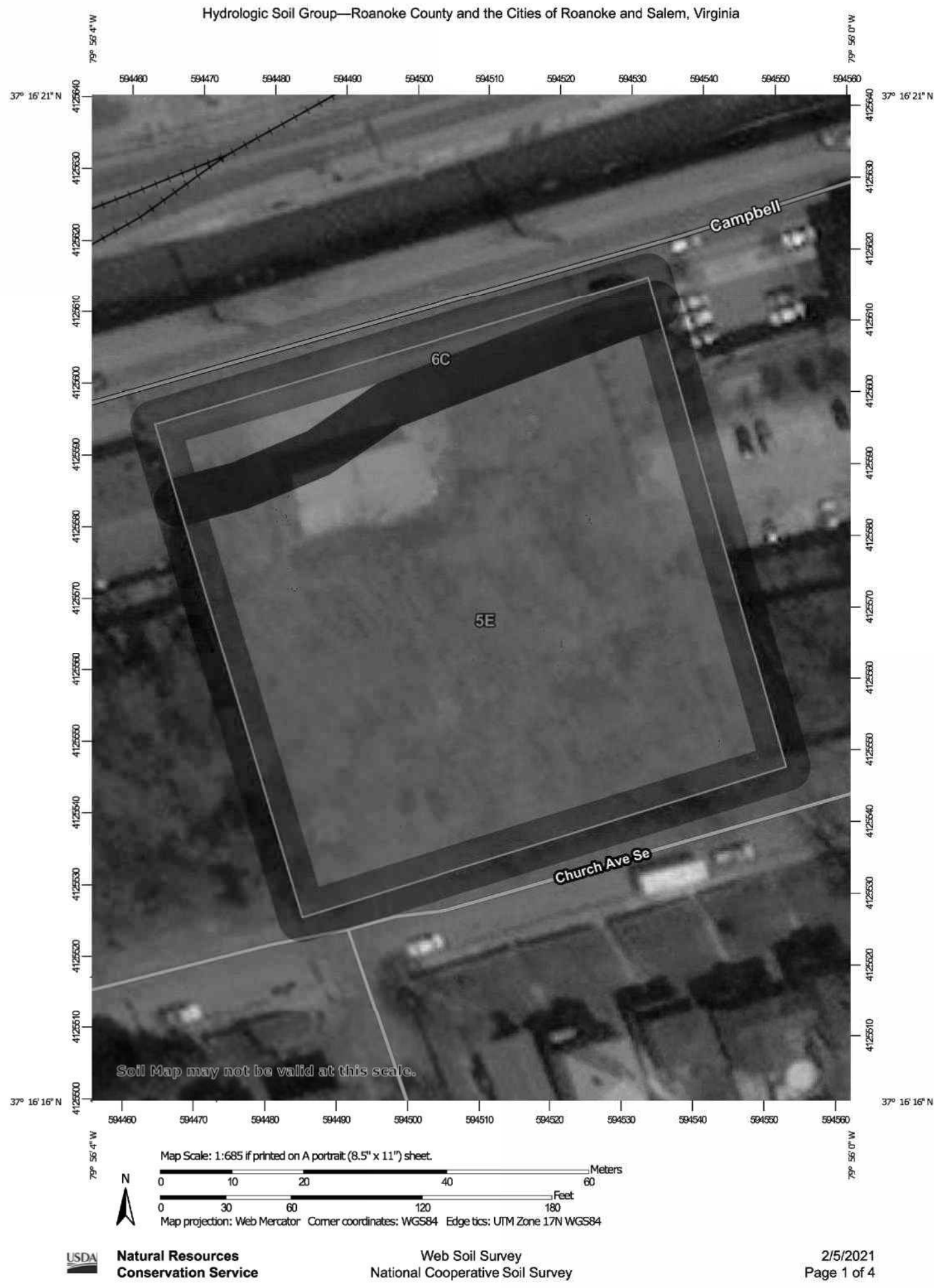
THE PROVISIONS OF THIS SECTION ARE A MINIMUM REQUIREMENT THAT MAY BE SUPERSEDED DURING THE COMPREHENSIVE PLANNING PROCESS. IN SOME CASES, THE FIRE MARSHAL OR HIS/HER DESIGNEE MAY ACCEPT PERFORMANCE-BASED ALTERNATIVES OR REQUIRE A GREATER LEVEL OF BUILDING ACCESS FOR LIFESAVING OR FIREFIGHTING PURPOSES. BUILDINGS EQUIPPED WITH ELEVATORS ARE REQUIRED TO BE EQUIPPED WITH A KNOX 1404 SERIES ELEVATOR BOX. THE ELEVATOR BOX SHALL BE LOCATED IN THE PRIMARY ELEVATOR LOBBY OR OTHER LOCATION APPROVED BY THE FIRE MARSHAL OR HIS/HER DESIGNEE.

ELEVATOR BOXES: CONTENTS

- AN ELEVATOR BOX SET SHALL BE DEFINED AS THE FOLLOWING:
- ONE (1) ELEVATOR DOOR DROP KEY
- ONE (1) KEY SET AS DESCRIBED IN KEY BOXES: CONTENTS, ABOVE

THE FOLLOWING NUMBER OF ELEVATOR BOX SETS SHALL BE REQUIRED BASED ON THE BUILDING SIZE AND/OR CONFIGURATION:

- LOW-RISE BUILDING/SIX STORIES OR LESS: ONE SET
- HIGH-RISE BUILDING/SEVEN STORIES OR GREATER: TWO SETS



Hydrologic Soil Group—Roanoke County and the Cities of Roanoke and Salem, Virginia

Hydrologic Soil Group

Map unit symbol	Map unit name	Rating	Acres in AOI	Percent of AOI
SE	Chiswell-Litz complex, 25 to 50 percent slopes	D	1.1	89.4%
6C	Chiswell-Litz-Urban land complex, 2 to 15 percent slopes	D	0.1	10.6%
Totals for Area of Interest			1.3	100.0%

Description

Hydrologic soil groups are based on estimates of runoff potential. Soils are assigned to one of four groups according to the rate of water infiltration when the soils are not protected by vegetation, are thoroughly wet, and receive precipitation from long-duration storms.

The soils in the United States are assigned to four groups (A, B, C, and D) and three dual classes (A/D, B/D, and C/D). The groups are defined as follows:

Group A. Soils having a high infiltration rate (low runoff potential) when thoroughly wet. These consist mainly of deep, well drained to excessively drained sands or gravelly sands. These soils have a high rate of water transmission.

Group B. Soils having a moderate infiltration rate when thoroughly wet. These consist chiefly of moderately deep or deep, moderately well drained or well drained soils that have moderately fine texture to moderately coarse texture. These soils have a moderate rate of water transmission.

Group C. Soils having a slow infiltration rate when thoroughly wet. These consist chiefly of soils having a layer that impedes the downward movement of water or soils of moderately fine texture or fine texture. These soils have a slow rate of water transmission.

Group D. Soils having a very slow infiltration rate (high runoff potential) when thoroughly wet. These consist chiefly of clays that have a high shrink-swell potential, soils that have a high water table, soils that have a claypan or clay layer at or near the surface, and soils that are shallow over nearly impervious material. These soils have a very slow rate of water transmission.

If a soil is assigned to a dual hydrologic group (A/D, B/D, or C/D), the first letter is for drained areas and the second is for undrained areas. Only the soils that in their natural condition are in group D are assigned to dual classes.

USDA Natural Resources Conservation Service Web Soil Survey National Cooperative Soil Survey

City of Roanoke  
Planning, Building, & Development

COMPREHENSIVE DEVELOPMENT PLAN  
Page 3 of 4

APPROVED

by Ken Richardson 07/26/2021



**BALZER & ASSOCIATES**  
PLANNERS / ARCHITECTS  
ENGINEERS / SURVEYORS

Roanoke / Richmond  
New River Valley / Staunton  
Harrisonburg / Lynchburg

[www.balzer.cc](http://www.balzer.cc)

1208 Corporate Circle  
Roanoke, VA 24018  
540.772.9580



LAWSON 2.0

605 CAMPBELL AVENUE, SOUTHEAST

GENERAL NOTES II

605 CAMPBELL AVE SE  
CITY OF ROANOKE, VIRGINIA

DRAWN BY SMD  
DESIGNED BY BTC  
CHECKED BY BTC  
DATE 6/15/2021  
SCALE N/A  
REVISIONS

C3

PROJECT NO. 04190073.00