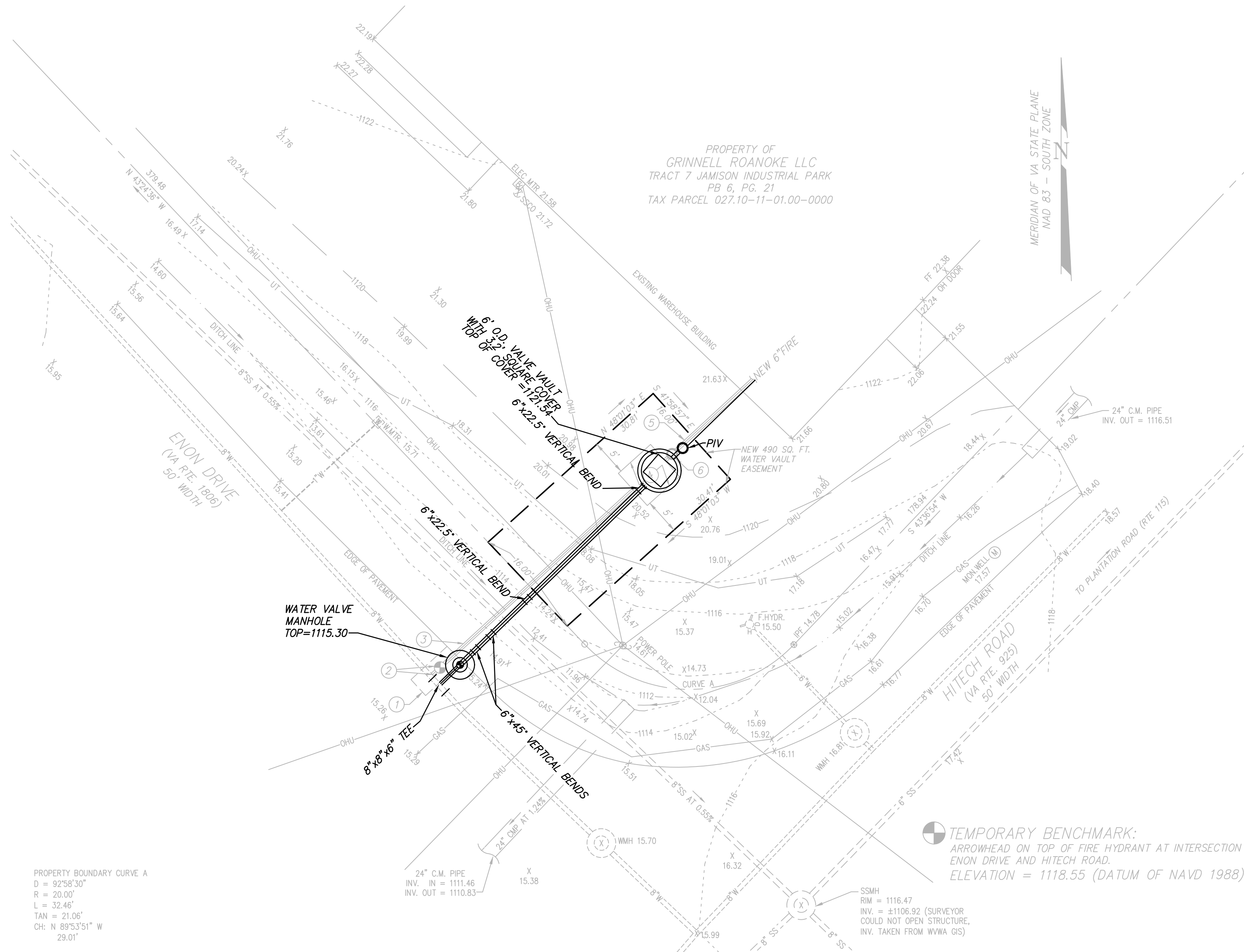


-
- The image contains two technical drawings of the LOK-PAK meter assembly:
- PLAN VIEW:** A top-down view of the meter assembly. It shows a central meter body with a handle. To the left is a 'TAPPING SADDLE AND BALL VALVE W/ LOCKING TABS' connected to a 'SMOOTH HOLE WITH LINK SEAL (TYPE OF 3)'. Above the meter is a 'DOMESTIC CHECK VALVE' and a 'LOK-PAK METER COUPLING'. To the right is a 'TYPE K COPPER OUT (domestic)' pipe. Below the meter are 'DIP IN' and 'DIP OUT' pipes. A 'DETECTOR CHECK (see notes)' is indicated near the dip in. Dimensions include 'W' (width) and 'L' (length, with a note '(see notes)').
 - SECTION VIEW:** A cross-sectional view of the assembly. It shows the meter installed within a 'DOUBLE DOOR GUTTER-FRAME H20 RATED ALUM. ACCESS HATCH'. The hatch is set into '5,000 PSI REINFORCED CONCRETE'. Above the hatch is a 'RECESSED RADIO READ PAD IN HATCH' and a '1 1/2" HATCH DRAIN'. The meter is connected to a 'TYPE K COPPER OUT (domestic)' pipe. Below the meter are 'DIP IN' and 'DIP OUT' pipes. Dimensions include 'H' (height, with a note '(see notes)'), '8" MIN.' for the concrete thickness, '6" MIN.' for the hatch frame, and '6" TYP.' for the hatch drain. A '4" BLOCKOUT FOR DRAIN (TYP. OF 4)' is shown at the bottom. The meter is supported by 'EPOXY COATED STEEL PIPE SUPPORT WITH SS ANCHORS (TYP. OF 4)'.

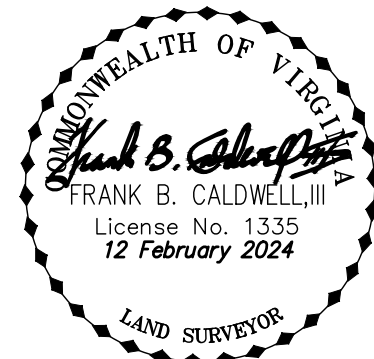
COMMERCIAL METER VAULT

W-5

09/07/17



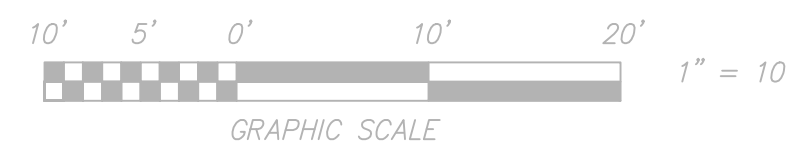
SEE SPRINKLER / SITE PLAN PREPARED BY VSC FIRE & SECURITY INC,
FOR LOCATION OF NEW FIRE DEPARTMENT CONNECTION (FDC).



INFORMATION SHOWN HEREIN AS SOLID LINEWORK OR TEXT REFLECTS AS-BUILT CONDITIONS AS OF THE DATE OF THE CWA AS-BUILT FIELD SURVEY, BEING DECEMBER 04, 2023, PERFORMED FOR VSC FIRE & SECURITY INC. UNDER CWA W.O. 22-0059.

THIS AS-BUILT SURVEY WAS COMPLETED UNDER THE DIRECT AND RESPONSIBLE CHARGE OF, FRANK B. CALDWELL III, L.S. FROM AN ACTUAL GROUND SURVEY MADE UNDER MY SUPERVISION; THE ORIGINAL DATA WAS OBTAINED ON DECEMBER 04, 2023 AND THIS DIGITAL GEOSPATIAL DATA INCLUDING METADATA MEETS MINIMUM ACCURACY STANDARDS UNLESS OTHERWISE NOTED.

ALL NEW WATERLINE MATERIALS, FABRICATION, AND
INSTALLATION SHALL BE IN ACCORDANCE WITH THE
WESTERN VIRGINIA REGIONAL DESIGN AND CONSTRUCTION
STANDARDS.



TO BE CONSTRUCTED FOR NEW FIRE SUPPRESSION SYSTEM
TRACT 7 JAMISON INDUSTRIAL PARK (P.B. 6, PG. 21)

SITUATE 7703 ENON DRIVE
HOLLINS MAGISTERIAL DISTRICT
COUNTY OF ROANOKE, VIRGINIA



CALDWELL WHITE ASSOCIATES

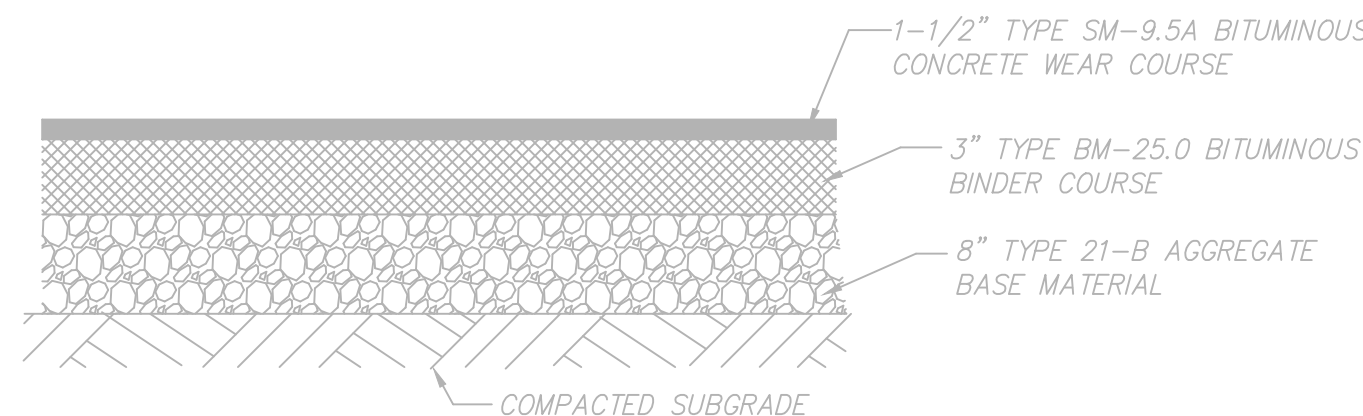
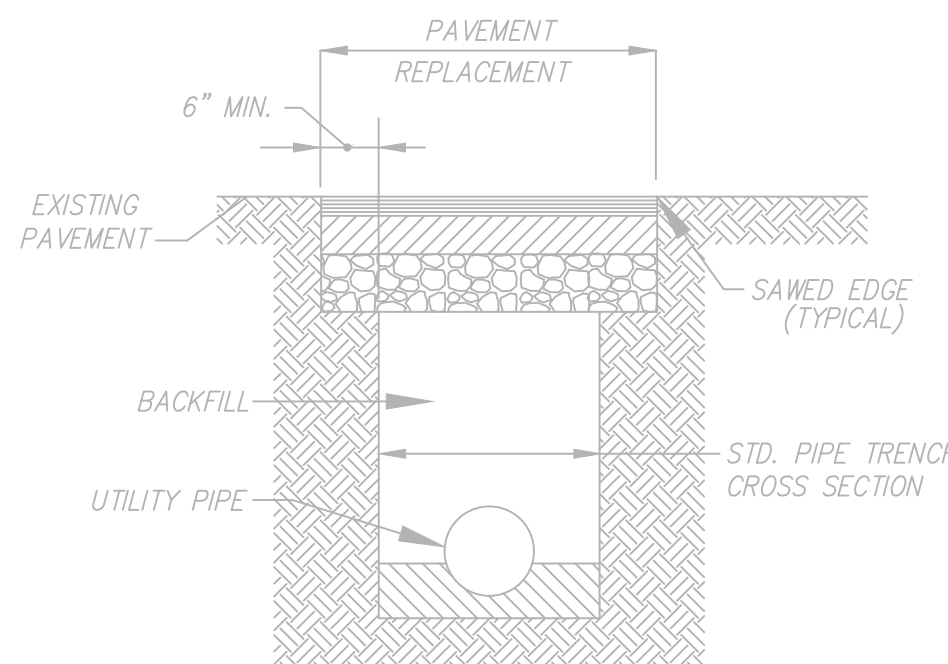
ENGINEERS / SURVEYORS / PLANNERS

Designed: C.L. White
 Drawn: C.L. White
 Checked: _____
 Date: August 16, 2022
 Scale: 1" = 10'
 Tax Parcel: 027.10-11-01.00-0000
 Field Book: CH-27
 W.O. No.: 22-0059

4203 MELROSE AVENUE
P.O. BOX 6260
ROANOKE, VIRGINIA 24017-0260
(540) 366-3400
FAX: (540) 366-8702

FAX: (540) 366-8702

	EXISTING	NEW	
APPROX	100.5	100.5	SPOT ELEVATION
BC	----- 100 -----	----- (100) -----	CONTOURS
BIT	=== 8"SS ===	----- 8"SS -----	SANITARY SEWER LINE
BLDG	----- 4"W -----	----- 4"W -----	WATERLINE
BM	----- 8"SD -----	===== 8"SD =====	STORM DRAIN
CMP	----- 2"G -----	----- 2"G -----	GAS LINE
CONC	----- E -----	----- E -----	OVERHEAD ELECTRIC LINE
EP	----- T -----	----- T -----	OVERHEAD TELEPHONE LINE
EXIST	----- CATV -----	----- CATV -----	OVERHEAD CABLE TELEVISION LINE
FDN	----- UE ----- UT -----	----- UE ----- UT -----	UNDERGROUND TEL OR ELEC LINE
FF			IRON PIN FOUND
FG			INVERT
INV			MINIMUM
IPF			REQUIRED
MIN			SANITARY
PVMT			STORM DRAIN
REQD			SANITARY SEWER
SD			SANITARY SEWER EASEMENT
SS			STANDARD
SSE			TEMPORARY BENCHMARK
STD			TOP OF CURB
TBM			TYPICAL
TC			VIRGINIA DEPARTMENT OF TRANSPORTATION
TYP			SURVEY TRAVERSE POINT
VDOT			BENCHMARK



REFER TO VDOT SPECIFICATIONS FOR INDIVIDUAL
PAVEMENT COURSES SHOWN HEREON

➡ 1 REVISED AUGUST 26, 2022 PER WVWA REVIEW – C.L. White