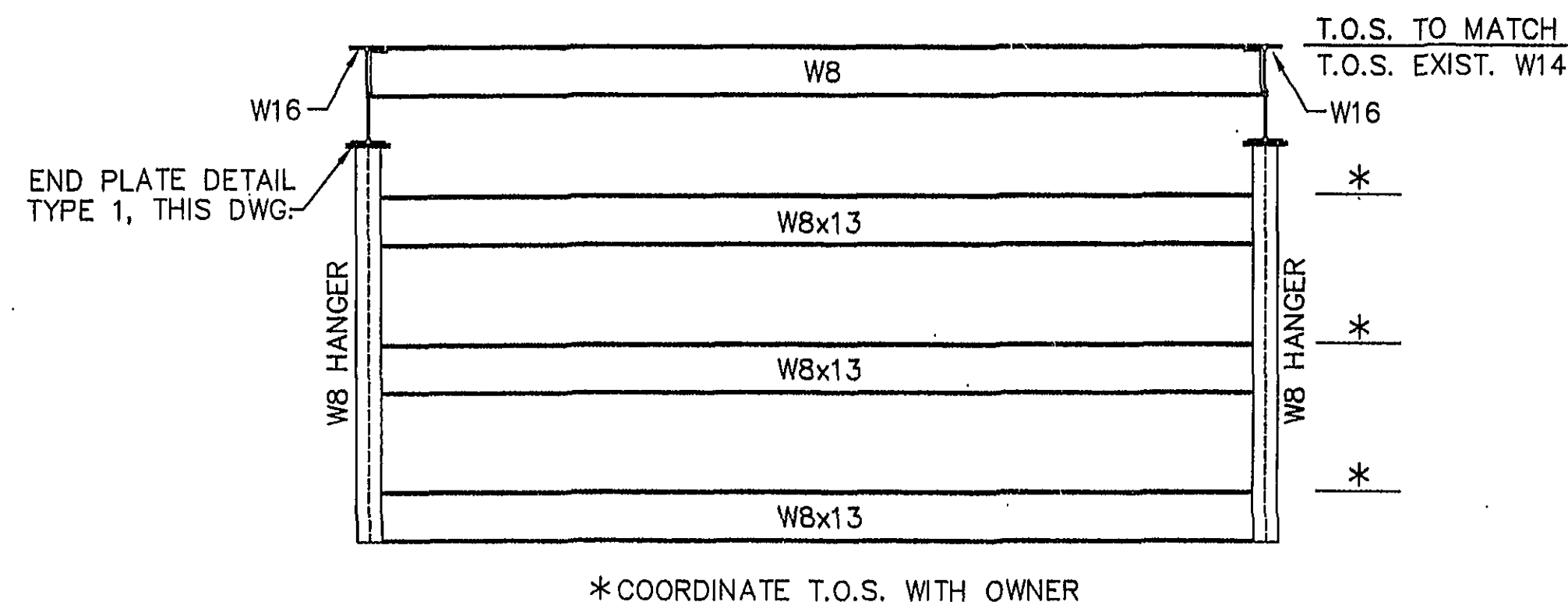
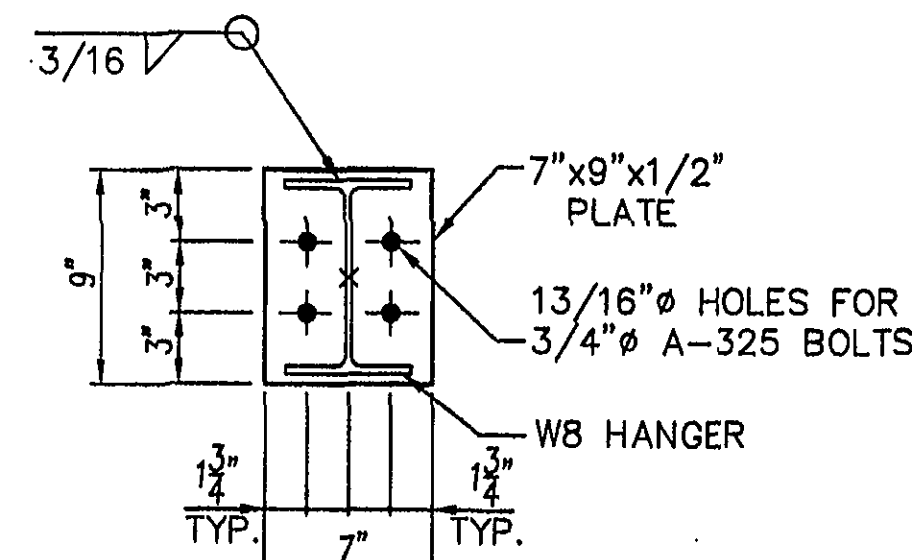


**PIPE RACK OVER BLDG. 1A**  
SCALE: 1/4" = 1'-0"

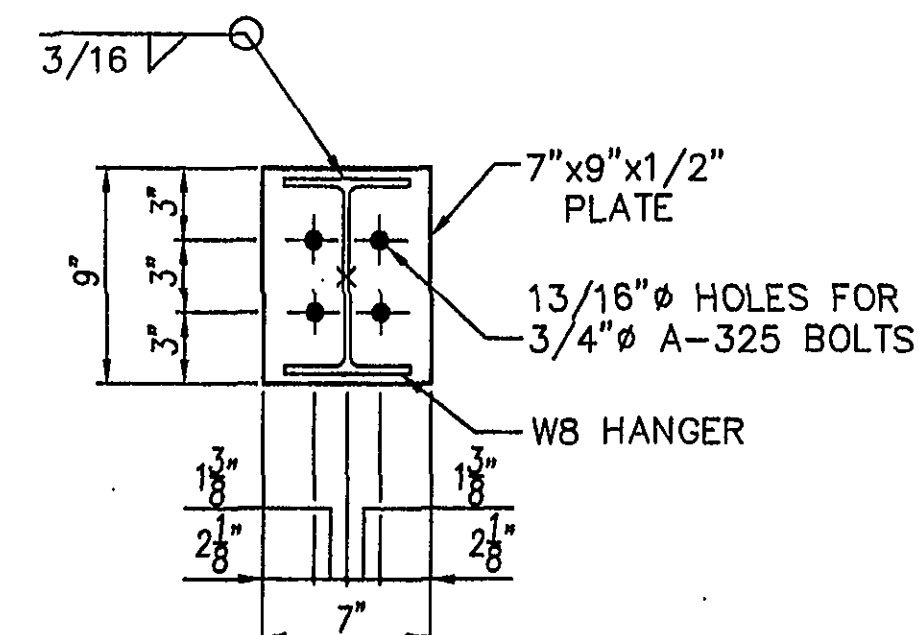


\*COORDINATE T.O.S. WITH OWNER

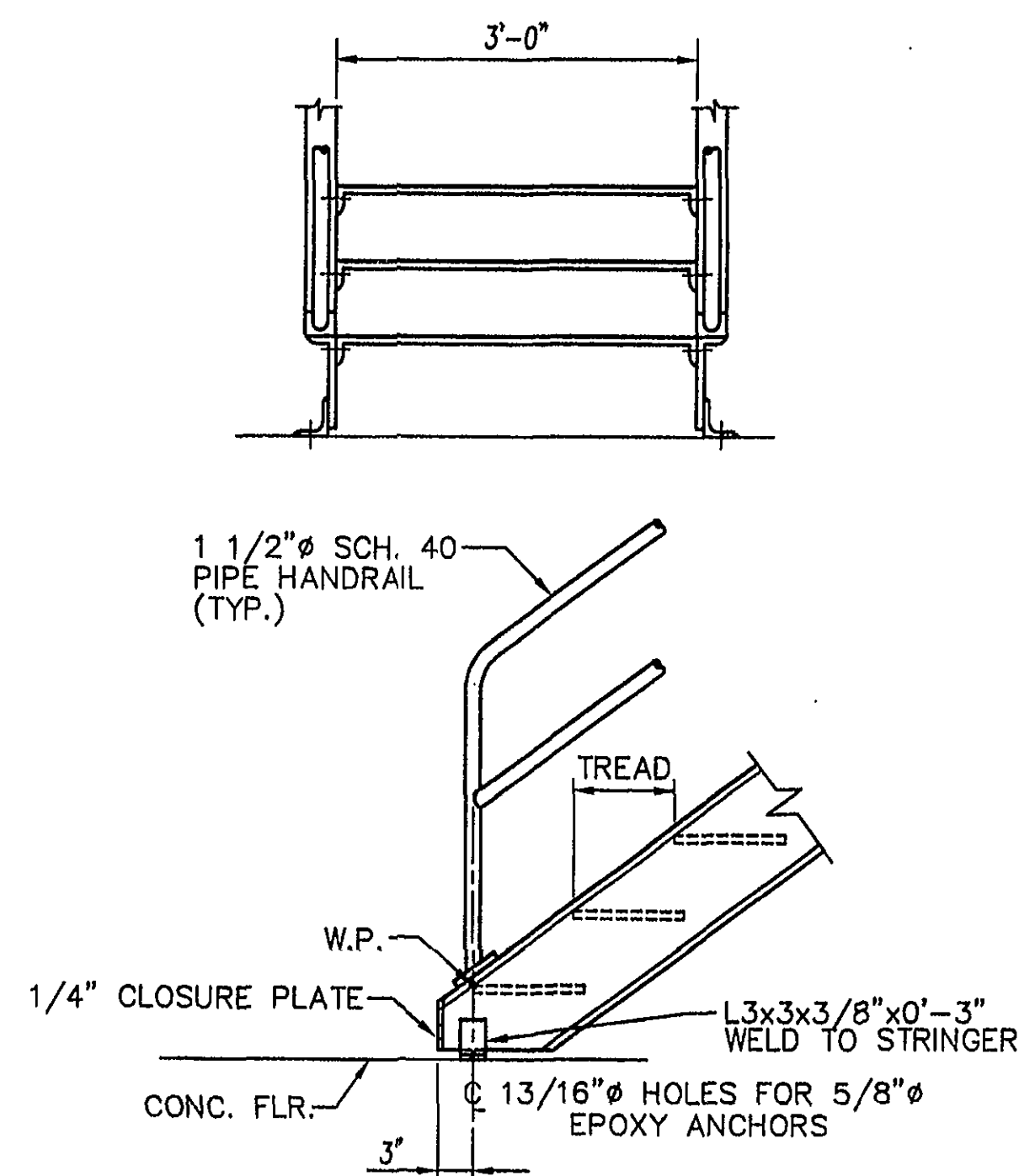
**SECTION A**  
SCALE: 1/2" = 1'-0"



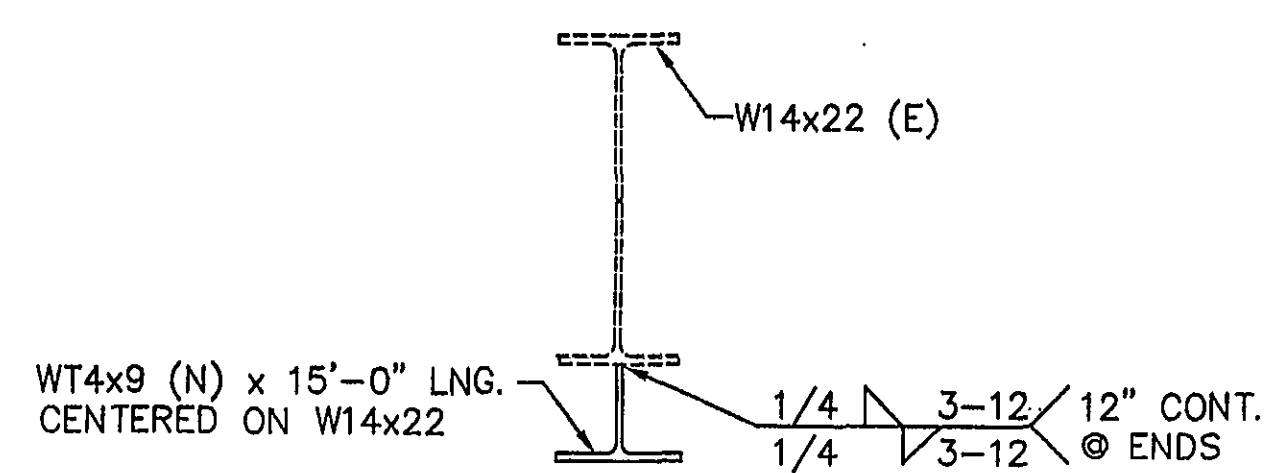
**END PLATE DETAIL  
TYPE 1**  
SCALE: 1 1/2" = 1'-0"



**END PLATE DETAIL  
TYPE 2**  
SCALE: 1 1/2" = 1'-0"



**TYPICAL STAIR BASE DETAIL**  
SCALE: 1" = 1'-0"

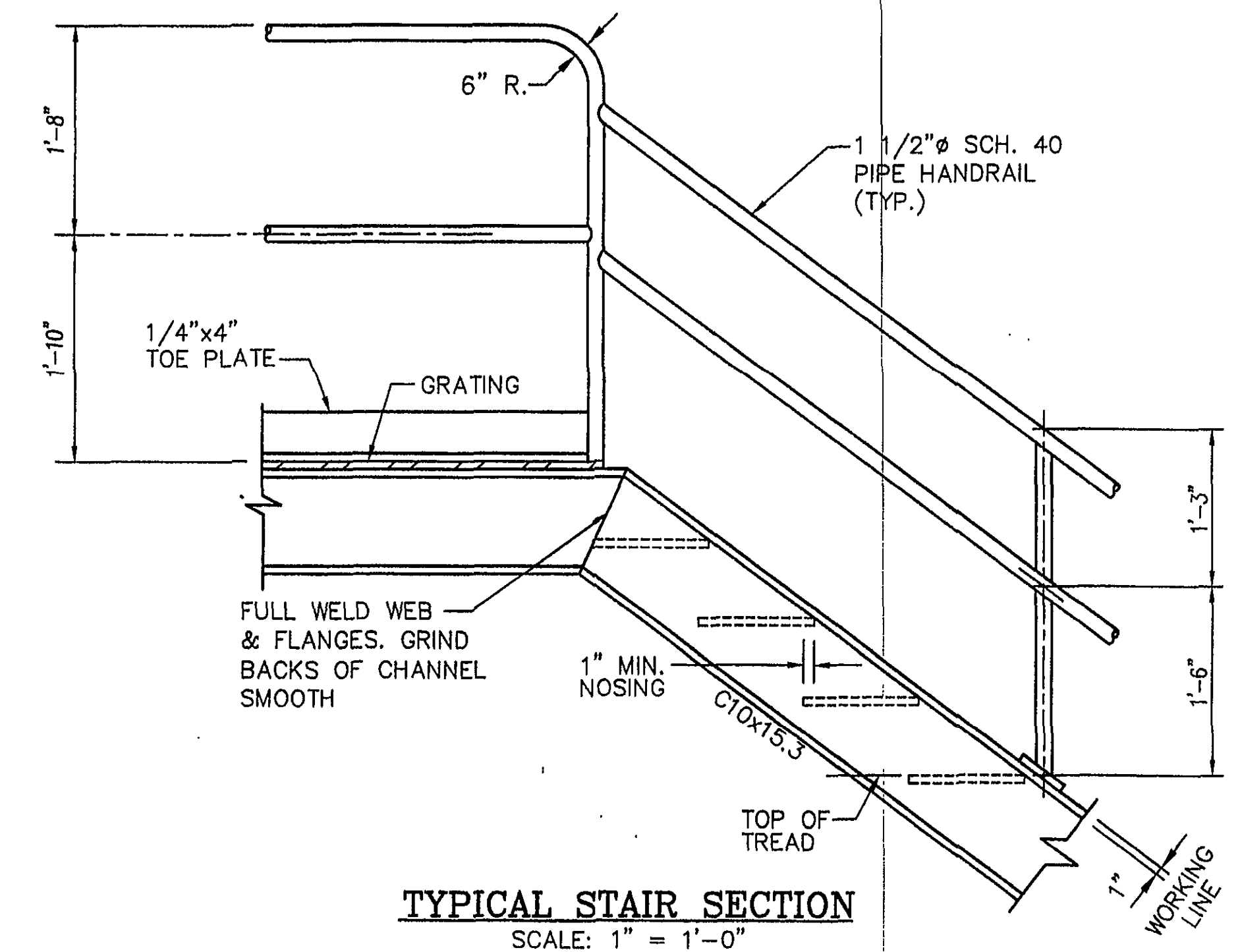


**SECTION B**  
SCALE: 1 1/2" = 1'-0"

### GENERAL STAIR NOTES

- FOR GENERAL STEEL AND WORKMANSHIP NOTES, SEE DWG. 533S001D.
- HANDRAIL, FLOOR PLATE (GRATING), AND STAIRS TO RECEIVE SHOP COAT OF APPROVED PRIMER, UNLESS NOTED OTHERWISE.
- HANDRAIL**  
RAILS & POSTS — 1 1/2" Ø STD. WT. STEEL PIPE, ASTM A53, GRADE B  
TOE PLATE — 1/4"x4" PLATE, ASTM A36  
BRACKETS — 5/16" (MIN.) THICK PLATE, TEE OR ANGLE, ASTM A36  
ALL POSTS, TOP RAIL, MIDRAIL AND TOE PLATE TO BE SHOP FABRICATED.  
ALL HOLES 11/16" Ø FOR 5/8" Ø ASTM A-307 BOLTS EXCEPT AS NOTED.
- STAIRS**
  - STAIR RUNS TO BE 10" (PREFERRED).
  - RISERS TO BE 7 1/2" (PREFERRED).
  - ALL TREADS TO HAVE ABRASIVE NOSING.
  - TWICE THE RISE PLUS THE RUN SHOULD NOT BE LESS THAN 24" OR MORE THAN 25".
  - THE VERTICAL RISE OF STAIRWAYS SHALL NOT EXCEED 12'-0" FOR A SINGLE FLIGHT OR BE LESS THAN THREE RISERS. DIFFERENCES IN PLATFORM ELEVATION OF LESS THAN 14" SHALL REQUIRE NO INTERMEDIATE STEPS. DIFFERENCES 14" TO 21" INCLUSIVE SHALL REQUIRE ONE INTERMEDIATE TREAD.

RISER AND TREAD SCHEDULE			
RISER	RUN	TREAD LAP	TREAD
7"	10 1/2"	1"	11 1/4"
7 1/4"	10 1/4"	1"	11"
7 1/2"	10"	1"	10 3/4"
7 3/4"	9 3/4"	1"	10 1/2"



**TYPICAL STAIR SECTION**  
SCALE: 1" = 1'-0"

1	ADDED TYPICAL STAIR SECTIONS & NOTES	TOB	5-1-03	DJM
0	ISSUED FOR CONSTRUCTION	TOB	4/21/03	DJM
REV	DESCRIPTION	BY	DATE	APPROVAL
THIS DRAWING IS THE PROPERTY OF PENTA ENG. THE INFORMATION CONTAINED HEREON MAY NOT BE USED OR COPIED IN ANY MANNER WITHOUT THE WRITTEN PERMISSION OF THE OWNER.				
SCALE	1/4" = 1'-0"	DATE	4/14/03	
DESIGNED BY	JFM			
DRAWN BY	TOB		4/14/03	
CHECKED BY	JFM		4/16/03	
APPROVAL	DJM		4/18/03	
CAD FILE NUMBER	533S014D			
PREPARED BY: PENTA ENGINEERING, P.A. 7906 NORTH POINT BLVD. WINSTON-SALEM, NC 27106		AKZO NOBEL ROANOKE, VA.		
PROJECT NO. 83533		DRAWING NO. 83533-S-014-D		REV. NO. 1

