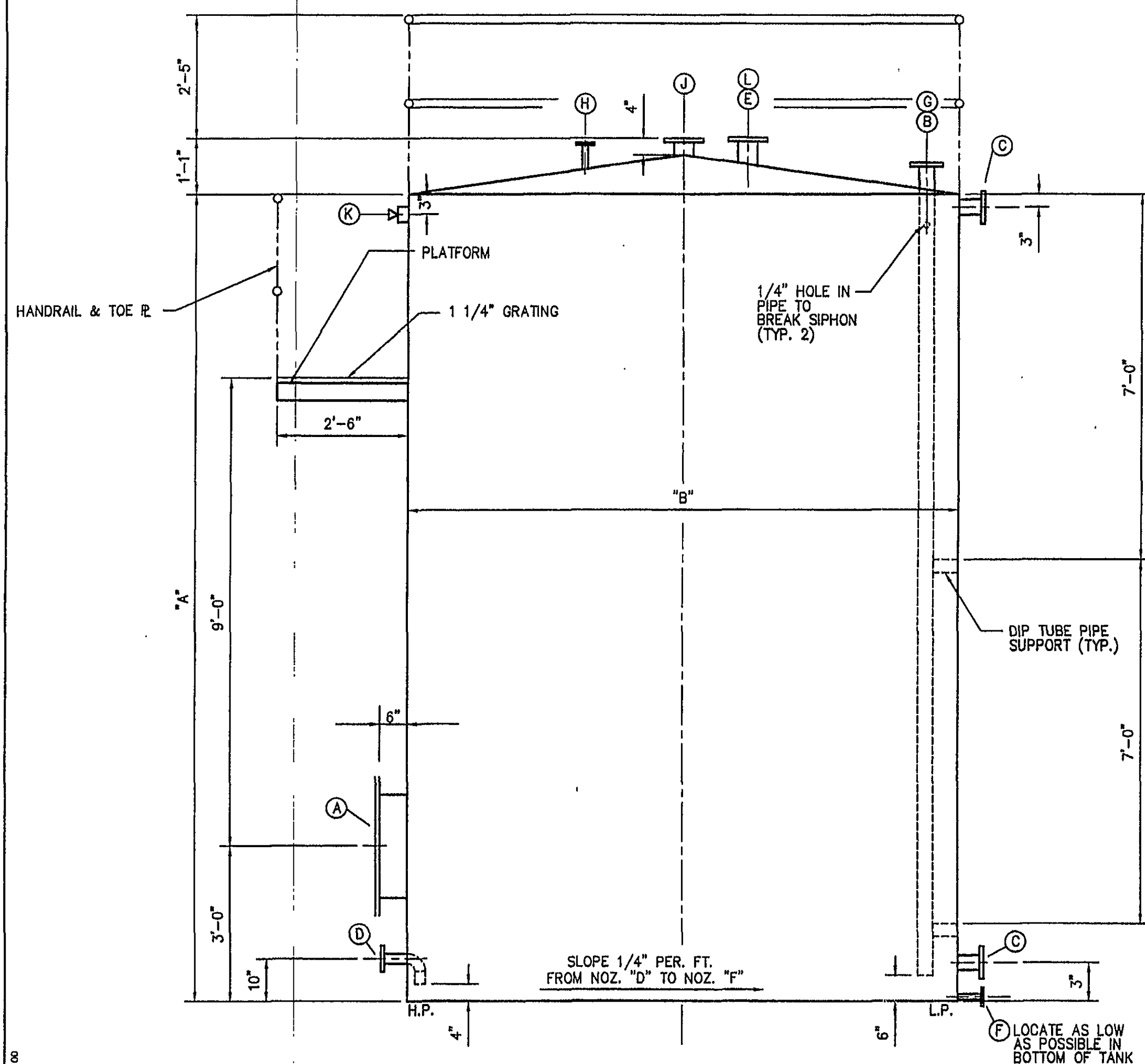
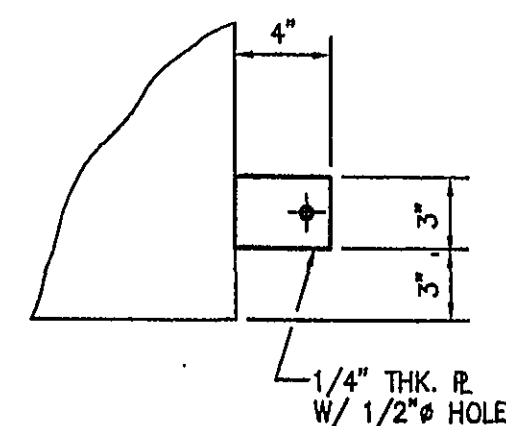


TANK PLAN



TANK ELEVATION



GROUNDING LUG DETAIL
(TWO REQUIRED SPACED @ 180°)
SCALE: 1 1/2" = 1'-0"

TANK SCHEDULE

MARK	SERVICE	CAPACITY (GAL)	HEIGHT "A"	DIA. "B"	RAD. "C"	RAD. "D"	MATERIAL	SIZE NOZ. "B"	SIZE NOZ. "D"
T-100	STYRENE	10,000	15'-5"	10'-6"	4'-9"	3'-3"	A-36	2"	2"
T-200	CYMEL	8,000	15'-5"	9'-6"	4'-3"	3'-0"	304 SS	**	2"
T-300	LATEX	10,000	15'-5"	10'-6"	4'-9"	3'-3"	304 SS	**	2"
T-400	RESIN	10,000	15'-5"	10'-6"	4'-9"	3'-3"	A-36	2"	2"
T-500	BECKSOL	10,000	15'-5"	10'-6"	4'-9"	3'-3"	A-36	3"	2"

NOZZLE SCHEDULE

MARK	NO. REQD	SIZE	RATING	SERVICE
A	1	24"	UL-142	MANWAY W/2 HANDLES
B**	1	*	150# FLG R.F.	PUMP RETURN W/ DIP TUBE
C	2	3"	150# FLG R.F.	DP TRANSMITTER (FUTURE) W/ BLIND FLANGE
D	1	*	150# FLG R.F.	LIQUID OUTLET
E	1	4"	150# FLG R.F.	LEVEL TRANSMITTER
F	1	1"	150# FLG R.F.	DRAIN/PIPE FLUSH W/BOTTOM OF TANK
G	1	3"	150# FLG R.F.	FILL LINE W/ DIP TUBE
H	1	2"	150# FLG R.F.	LEVEL SWITCH (HIGH/HIGH) W/2" BLD. FLG. TAPED W/ 1" FNPT
J	1	4"	150# FLG R.F.	CONSERVATION VENT
K	1	1"	3000#	CPLG. W/PLUG (FUTURE LEVEL SWITCH)
L	1	8"	150# FLG R.F.	CONSERVATION VENT (400 LBS VERTICAL LOAD)

* -SEE TANK SCHEDULE FOR NOZZLE SIZE

** -NOZZLE "B" DELETED ON T-200 AND T-300.

NOTES:

- TANK SUPPLIER TO PROVIDE FIELD ASSEMBLED LADDER, MAINTENANCE PLATFORM W/HANDRAIL AND HANDRAIL AROUND TOP OF TANK. GRATING TO BE NON-SERRATED TYPE. CAGE NOT REQUIRED.
- ALL NOZZLES SHALL EXTEND 6" FROM TANK UNLESS INDICATED OTHERWISE. NOZZLES SHALL PENETRATE SHELL; WELD INSIDE AND GRIND FLUSH.
- TANK AND MAINTENANCE PLATFORM TO BE RATED FOR 60 PSF LIVE LOAD. PLUS SEISMIC FOR ROANOKE, VA.
- BUILD PER UL-142 (Spd=1.06, +2.5 PSI & -2"H2O) ENGINEERING ANALYSIS REQUIRED, PNEUMATIC TEST TANK AT 2 PSI, WITNESSED BY OWNER.
- 5A. SHOP PAINT (CARBON STEEL ONLY)
 - SAND BLAST TANK EXTERIOR TO SSPC-6. APPLY ONE COAT, TNEDEC SERIES 66, HIGH-BOND EPOXOLINE, RED IN COLOR, TO A 4-MIL DFT.
 - APPLY ONE COAT, TNEDEC SERIES 66, EPOXOLINE, LIGHT BLUE IN COLOR TO 4 MIL DFT.
 - APPLY 2-3 MILS TNEDEC SERIES 73, ALPHATIC POLYURETHANE, WHITE IN COLOR, 2-1/2 MILS DFT.
- 5B. FIELD PAINT (CARBON STEEL ONLY)
 - PROVIDE 1" THK. RUBATEX R425 UNDER ALL TANKS IN BLDG. 10. INSTALL PER MANUFACTURES INSTRUCTIONS. AVAILABLE FROM CGR 1-336-621-4568.
 - APPLY ONE COAT, TNEDEC SERIES 73 ALPHATIC POLYURETHANE, WHITE IN COLOR TO DAMAGED AREAS IN TRANSIT AND RIGGING.
- DRAWINGS WITH ALL FABRICATION DETAILS REQUIRED FOR CLIENT APPROVAL PRIOR TO FABRICATION.
- PROVIDE PERMANENT S/S NAMEPLATE PER UL-142 INCLUDING MFG. NAME, SHOP NUMBER, YEAR OF MANUFACTURE, DESIGN VACUUM PRESSURE, AND MATERIAL OF CONSTRUCTION.
- INSPECTION BY OWNER REQUIRED PRIOR TO SHIPMENT.
- GASKETS SHALL BE GARLOCK GYLON STYLE 3510, 1/16" THK., RING TYPE.
- RE-TEST PER UL-142 PRIOR TO BEING PLACED IN SERVICE.

0 ISSUED FOR CONSTRUCTION		JD3	4/1/03	TLM
REV	DESCRIPTION	BY	DATE	APPROVAL
THIS DRAWING IS THE PROPERTY OF PENTA ENG. THE INFORMATION CONTAINED HEREON MAY NOT BE USED OR COPIED IN ANY MANNER WITHOUT THE WRITTEN PERMISSION OF THE OWNER.		PREPARED BY: PENTA ENGINEERING, P.A. 7996 NORTH POINT BLVD. WINSTON-SALEM, NC 27108		
SCALE: 1/2" = 1'-0"		DATE: 2/17/03		
DESIGNED BY	JD3	2/17/03		
DRAWN BY	JD3	2/17/03		
CHECKED BY	TLM	3/10/03		
APPROVAL	AKZO NOBEL	3/21/03		
CAD FILE NUMBER	533M001D	PROJECT NO. 83533		
		DRAWING NO. 83533-M-001-D		REV. NO. 0

