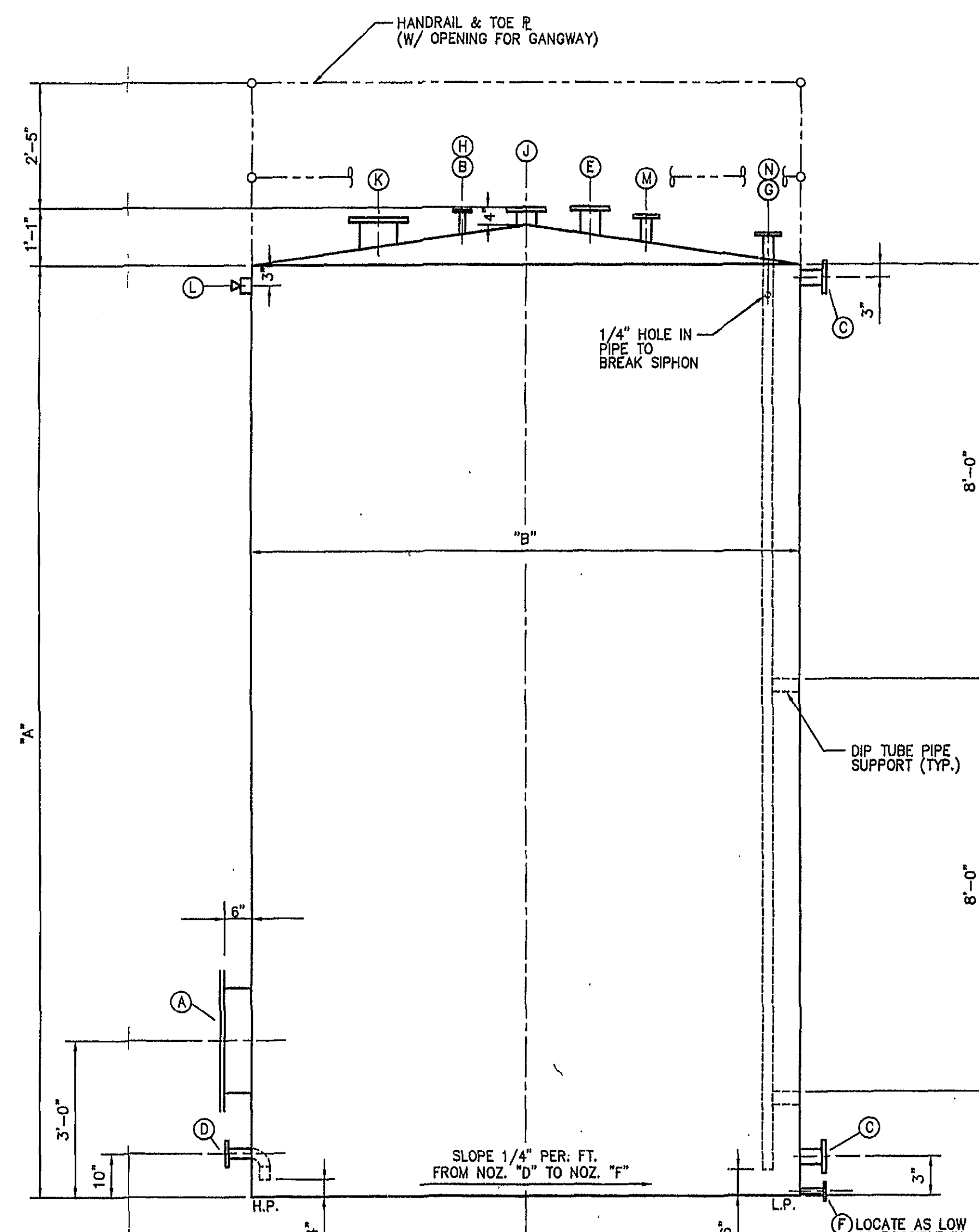
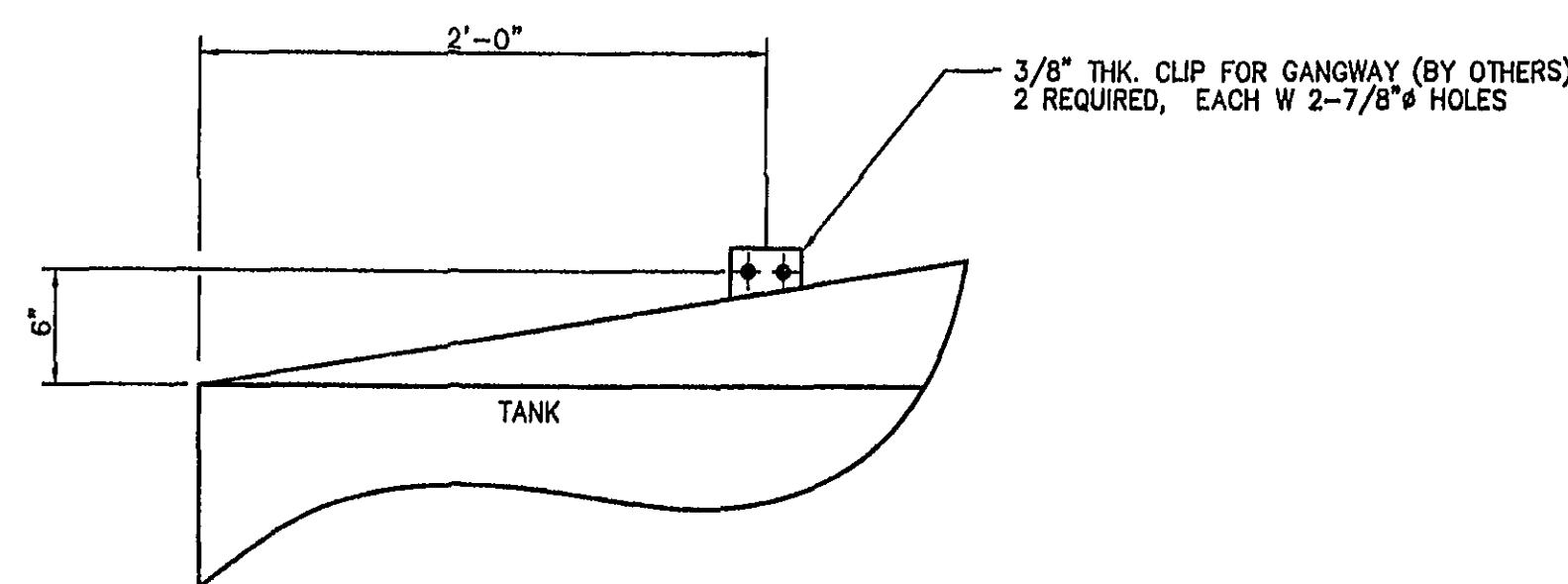


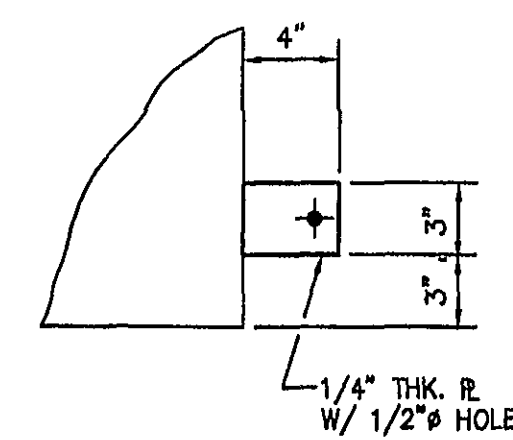
TANK PLAN



TANK ELEVATION



GANGWAY CLIP LOCATION
SCALE: 1 1/2" = 1'-0"



GROUNDING LUG DETAIL
(TWO REQUIRED SPACED @ 180°)
SCALE: 1 1/2" = 1'-0"

TANK SCHEDULE						
MARK	LOCATION	SYSTEM	CAPACITY (GAL)	HEIGHT (A)	DIAMETER (B)	MATERIAL
T-1000	TANK FARM	BUTYL ACETATE	11,600	18'-0"	10'-6"	A-36
T-1100	TANK FARM	ACETONE	11,600	18'-0"	10'-6"	A-36
T-1200	TANK FARM	MINERAL SPIRITS	11,600	18'-0"	10'-6"	A-36
T-1300	TANK FARM	XYLENE	11,600	18'-0"	10'-6"	A-36
T-1400	TANK FARM	TOLUENE	11,600	18'-0"	10'-6"	A-36

NOZZLE SCHEDULE				
MARK	NO. REQD	SIZE	RATING	SERVICE
A	1	24"	UL-142	MANWAY W/ 2 HANDLES
B	1	2"	150# FLG R.F.	SPARE, W/BLIND FLG.
C	2	3"	150# FLG R.F.	DP TRANSMITTER (FUTURE) W/ BLIND FLANGE
D	1	2"	150# FLG R.F.	LIQUID OUTLET
E	1	4"	150# FLG R.F.	LEVEL TRANSMITTER
F	1	1"	150# FLG R.F.	DRAIN (PIPE FLUSH W/BOTTOM OF TANK)
G	1	2"	150# FLG R.F.	FILL LINE W/2" DIP TUBE
H	1	2"	150# FLG R.F.	LEVEL SWITCH (HIGH/HIGH) (2" BL. FLG. W/ 1" NPT)
J	1	3"	150# FLG R.F.	CONSERVATION VENT (60 LBS VERTICAL LOAD)
K	1	8"	150# FLG R.F.	EMERGENCY VENT
L	1	1"	3000#	THD. CPLG W/PLUG
M	1	2"	150# FLG R.F.	SPARE, W/ BLIND FLANGE
N	1	2"	150# FLG R.F.	PUMP RETURN W/ DIP TUBE

NOTES:

- TANK SUPPLIER TO PROVIDE FIELD ASSEMBLED HANDRAIL AROUND TOP OF TANK.
- ALL NOZZLES SHALL EXTEND 6" FROM TANK UNLESS INDICATED OTHERWISE. NOZZLES SHALL PENETRATE SHELL; WELD INSIDE AND GRIND FLUSH.
- TANK AND MAINTENANCE PLATFORM TO BE RATED FOR 60 PSF LIVE LOAD, PLUS SNOW, SEISMIC, AND WIND LOADS FOR ROANOKE, VA.
- BUILD PER UL-142 (SpG=1.06, +2.5 PSI & -2"H2O) ENGINEERING ANALYSIS REQUIRED, PNEUMATIC TEST TANK AT 2 PSI, WITNESSED BY OWNER.
- SHOP PAINT
 - SAND BLAST TANK EXTERIOR TO SSPC-6. APPLY ONE COAT, TNEC SERIES 66, HIGH-BOND EPOXOLINE, RED IN COLOR, TO A 4-MIL DFT.
 - APPLY ONE COAT, TNEC SERIES 66, EPOXOLINE, LIGHT BLUE IN COLOR TO 4 MIL DFT.
 - APPLY 2-3 MILS TNEC SERIES 73, ALPHATIC POLYURETHANE, WHITE IN COLOR, 2-1/2 MILS DFT.
- FIELD PAINT
 - APPLY 1/8" THICKNESS (MIN.) OF BITUMASTIC TO BOTTOM OF TANK, JUST BEFORE SETTING ON HOUSEKEEPING PAD (BY CONTRACTOR)
 - APPLY ONE COAT, TNEC SERIES 73 ALPHATIC POLYURETHANE, WHITE IN COLOR TO DAMAGED AREAS IN TRANSIT AND RIGGING.
- DRAWINGS WITH ALL FABRICATION DETAILS REQUIRED FOR CLIENT APPROVAL PRIOR TO FABRICATION.
- PROVIDE PERMANENT S/S NAMEPLATE PER UL-142 INCLUDING MFG. NAME, SHOP NUMBER, YEAR OF MANUFACTURE, DESIGN VACUUM PRESSURE, AND MATERIAL OF CONSTRUCTION.
- INSPECTION BY OWNER REQUIRED PRIOR TO SHIPMENT.
- GASKETS SHALL BE GARLOCK GYLON STYLE 3510, 1/16" THK., RING TYPE.
- RE-TEST PER UL-142 PRIOR TO BEING PLACED IN SERVICE.

0 ISSUED FOR CONSTRUCTION		JD3	4/1/03	TLM
REV	DESCRIPTION	BY	DATE	APPROVAL
THIS DRAWING IS THE PROPERTY OF PENTA ENG. THE INFORMATION CONTAINED HEREON MAY NOT BE USED OR COPIED IN ANY MANNER WITHOUT THE WRITTEN PERMISSION OF THE OWNER.		PREPARED BY: PENTA PENTA ENGINEERING, P.A. 7906 NORTH POINT BLVD. WINSTON-SALEM, NC 27106		
SCALE: 1/2" = 1'-0"		AKZO NOBEL ROANOKE, VA.		
DESIGNED BY: JD3		TANK FARM SOLVENT BULK STORAGE		
DRAWN BY: JD3		TANK FABRICATION DRAWINGS		
CHECKED BY: TLM		PROJECT NO. 83533		
APPROVAL: AKZO NOBEL		DRAWING NO. 83533-M-002-D		
APPROVAL: CAD FILE NUMBER 533M002D		REV. NO. 0		