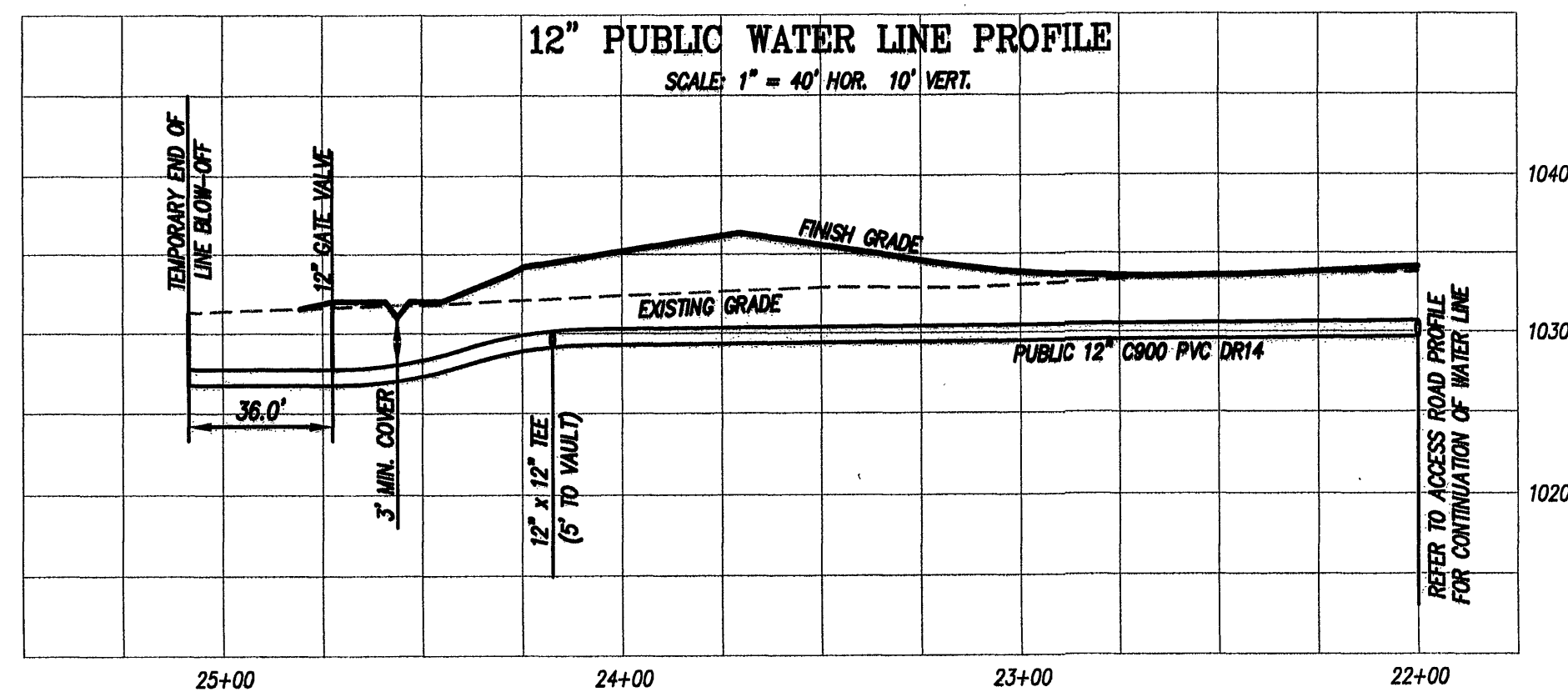
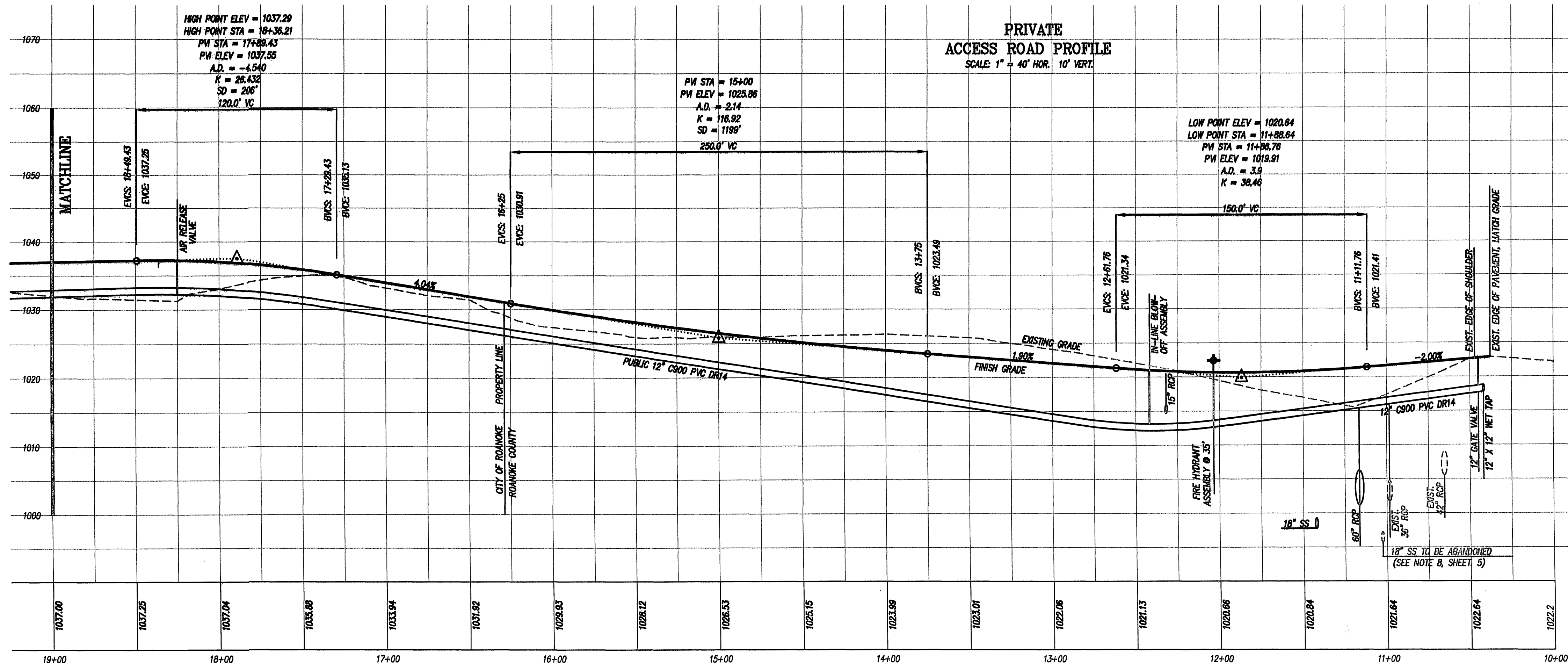


WATER VAULT NOTE:

WATER VAULT TO BE PROVIDED BY CLEARFLOW. SIZE OF WATER VAULT SHALL BE IN ACCORDANCE WITH THE STANDARD WYMA DETAIL W-26 AND SUITABLE FOR A 12" FIRE LINE, A 2" DOMESTIC SERVICE AND A 3/4" METER. THE DEVELOPER/CONTRACTOR IS RESPONSIBLE FOR ORDERING, PAYMENT, COORDINATION OF DELIVERY, UNLOADING OF VAULT ON-SITE, VAULT INSTALLATION, AND INSTALLATION OF WATER SERVICE BETWEEN THE WYMA MAIN AND VAULT. CONTACT CLEARFLOW AT 540-942-3300. PRIOR TO CONSTRUCTION CALL THE WYMA INSPECTOR AT 540-537-3243.

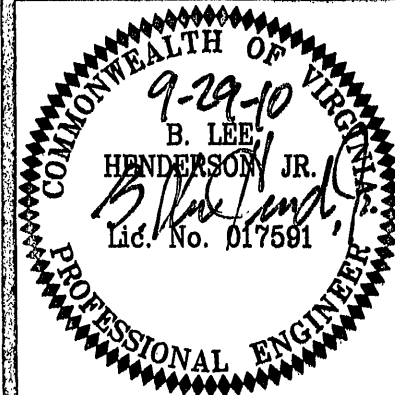
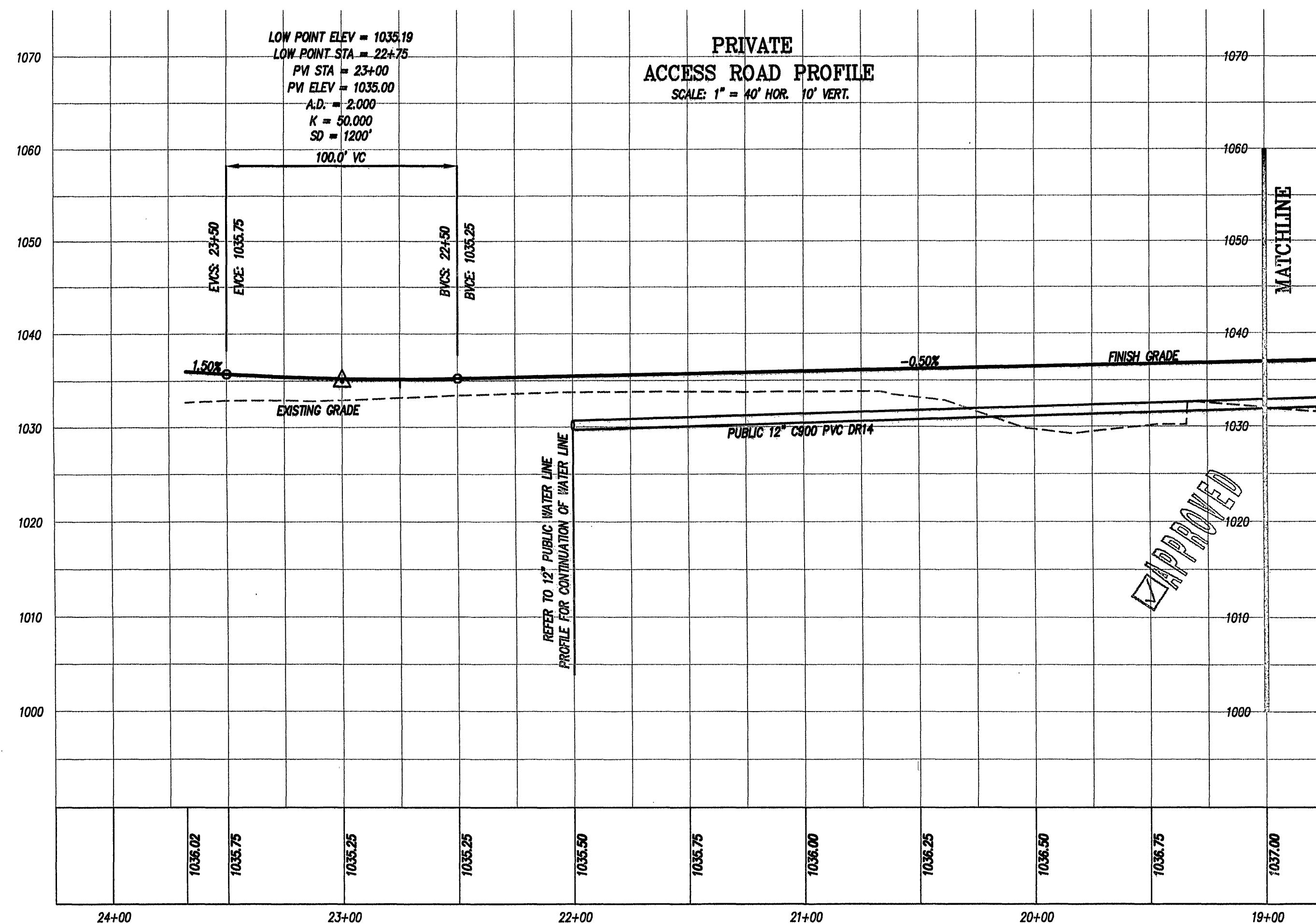


NOTES:

- ALL WATER AND SANITARY SEWER LINES SHALL HAVE A MINIMUM OF 3.0 FEET OF COVER.
- MAINTAIN A MINIMUM OF 18" CLEARANCE FROM OUTSIDE OF PIPE TO OUTSIDE OF PIPE AT ALL WATER, SANITARY SEWER, AND STORM DRAIN CROSSINGS. WHERE THIS CLEARANCE CAN NOT BE ACHIEVED, CONCRETE PIERS SHALL BE UTILIZED IN ACCORDANCE WITH THE WESTERN VIRGINIA WATER AUTHORITY'S WATER AND SANITARY SEWER STANDARDS.
- SANITARY SEWER MAIN PIPE MATERIAL SHALL BE PVC, SDR-35, EXCEPT AS NOTED, OR APPROVED EQUAL.
- WORKING PRESSURE OF EXISTING 12" WATER MAIN ALONG HOLLINS ROAD AT PROPOSED CONNECTION IS LESS THAN 100 PSI. NEW WATER LINE MAIN PIPE MATERIAL SHALL BE C900 PVC DR14, UNLESS OTHERWISE INDICATED, OR APPROVED EQUAL.
- ALL NEW DROP INLETS AND STORM DRAIN MANHOLES SHALL HAVE VDOT STD. IS-1, INLET SHAPING.
- ALL DRAINAGE STRUCTURES DEEPER THAN 4.0 FEET SHALL HAVE STEPS (VDOT STD. ST-1) INSTALLED.
- SAFETY SLABS (VDOT STD. SL-1) ARE REQUIRED IN ALL DRAINAGE STRUCTURES WITH A DEPTH OF 12.0 FEET OR GREATER. THE SPACING OF THE SLABS SHOULD BE 8 TO 12 FEET WITH NO SAFETY SLAB LOCATED WITHIN 6 FEET FROM THE TOP OR BOTTOM OF THE STRUCTURE.

40' 0 40'

SCALE: 1" = 40'



ACCESS ROAD AND 12"
PUBLIC WATER LINE PROFILE

DEVELOPMENT PLAN FOR
AMERICAN TIRE DISTRIBUTORS
ROANOKE, VIRGINIA
PREPARED FOR
PINECREST DEVELOPMENT COMPANY
ROANOKE CITY & COUNTY, VIRGINIA

| REVISIONS | | DATE | DESCRIPTION |
|-----------|------|-------------|-------------|
| NO. | DATE | DESCRIPTION | |
| 1 | | | |
| 2 | | | |
| 3 | | | |
| 4 | | | |
| 5 | | | |

DATE: September 29, 2010

SCALE: AS SHOWN

COMMISSION NO. 2010-019

SHEET 9 OF 20