



CONTOUR INTERVAL: 2 FT.

LEGEND

- IPF IRON PIN FOUND
- ⊗ P# ELECTRIC POLE
- GUY WIRE
- ⊗ T# TELEPHONE POLE
- ⊗ LIGHT POLE
- ⊗ WATER METER
- ⊗ SANITARY MANHOLE
- ⊗ FIRE HYDRANT
- ⊗ GAS VALVE
- ⊗ WATER MANHOLE (MAY BE WATER VALVE WITHIN STRUCTURE)
- ⊗ WATER VALVE
- ⊗ BENCHMARK
- ⊗ SIGN
- OH E — OVERHEAD ELECTRIC
- OH T — OVERHEAD TELEPHONE
- OH CTV — OVERHEAD CABLE TV
- OH FO — OVERHEAD FIBER OPTIC
- OH NW — OVERHEAD NETWORK LINE
- UG FO — UG FIBER OPTIC/CABLE TV
- UG G — UG GAS LINE
- UG E — UG ELECTRIC LINE
- SS — UG SAN. SEWER LINE
- W — UG WATER LINE
- CONCRETE SIDEWALK
- ROANOKE GAS COMPANY
- TOP OF WALL ELEVATION
- TERRA COTTA PIPE
- SUBSTATION GRAVEL PAD
- DUCTILE IRON PIPE
- BRICK
- EXISTING FENCE
- EXISTING 2' CONTOUR
- EXISTING 10' CONTOUR
- RIGHT OF WAY
- LIMITS OF CONSTRUCTION

ITEMS TO BE REMOVED OR RELOCATED AS NOTED

SB# SOIL BORE HOLE LOCATIONS
(NOTE: SB #6 WAS RELOCATED 10' WEST BY DRILLERS DUE TO OH, ELEC INTERFERENCE AND SB #7 WAS ADDED FOR RETAINING WALL INFORMATION)

CONTRACTOR TO BE AWARE OF UNDERGROUND OR OVERHEAD UTILITIES IN THESE AREAS

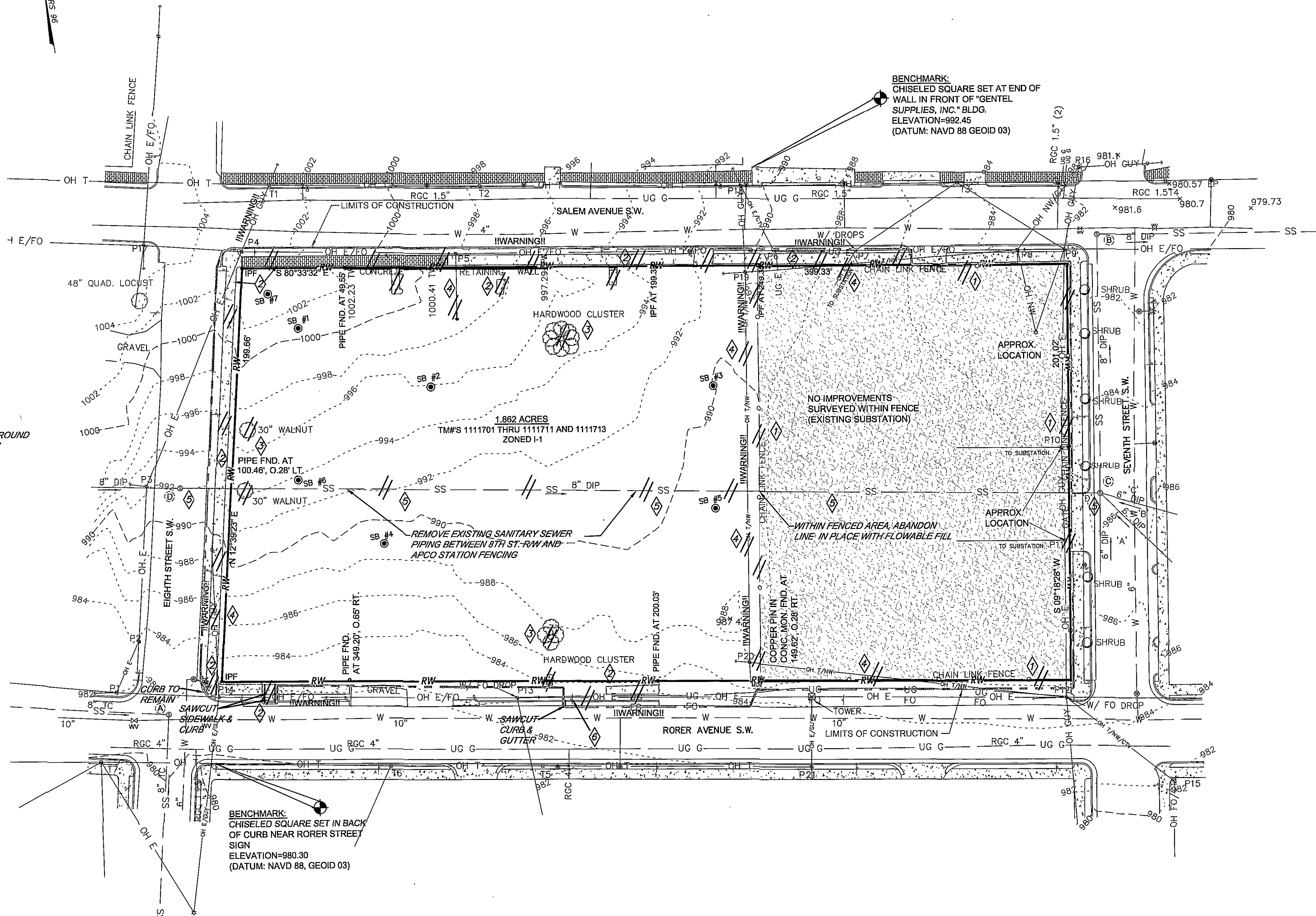
CONTRACTOR TO INSTALL SAFETY FENCING AS NEEDED TO DISCOURAGE PEDESTRIANS FROM ENTERING WORK AREA. SEE DETAIL ON SHEET 6 OF 10.

DEMOLITION SCHEDULE

- 1 DEMO FENCE - NEW FENCE SHALL BE INSTALLED (BY OTHERS) PRIOR TO REMOVAL OF EXISTING FENCE.
- 2 DEMO HARDSCAPE - SIDEWALK, CURB & GUTTER, CONCRETE STEPS AND RETAINING WALL, WHERE INDICATED, SHALL BE REMOVED AND DISPOSED OF IN A STATE LICENSED C/D LANDFILL.
- 3 DEMO TREES/SHRUBS - ALL INDICATED TREES AND SHRUBS, INCLUDING STUMPS, SHALL BE REMOVED AND DISPOSED OF IN A LEGAL MANNER. NO BURNING OF DEBRIS SHALL BE ALLOWED ON THIS SITE.
- 4 DEMO OVERHEAD LINE / GUY WIRES (BY OTHERS).
- 5 DEMO / ABANDON SANITARY SEWER LINE (SANITARY SEWER WITHIN R.O.W. TO BE ABANDONED BY OTHERS IN ACCORDANCE WITH WWW DRAWINGS).
- 6 CITY TO RELOCATE SIGN.

THE ENGINEER AND/OR SURVEYOR TAKES NO RESPONSIBILITY FOR THE LOCATION OR ACCURACY OF THE UTILITIES AS SHOWN HEREON OR ANY UTILITIES WITHIN THE PROJECT THAT MAY NOT BE SHOWN HEREON. THE CONTRACTOR SHALL BE RESPONSIBLE FOR CONTACTING THE UTILITY COMPANIES TO SEE IF ANY UTILITIES EXIST WITHIN THE AREA OF THE PROJECT BEFORE ANY CONSTRUCTION BEGINS. ANY COST INCURRED BY DAMAGING ANY UTILITY WITHIN THE PROJECT SHALL BE AT THE EXPENSE OF THE CONTRACTOR.

48 WORKING HOURS PRIOR TO STARTING THE WORK, THE CONTRACTOR SHALL CALL MISS UTILITY AT 811 AND ADVISE THE NATURE AND LOCATION OF THE WORK.



NOTES:

1. THIS DRAWING HAS BEEN PREPARED FROM AN ACTUAL FIELD SURVEY DONE ON MARCH 6, 2008 AND THERE ARE NO VISIBLE EASEMENTS OR ENCROACHMENTS EXCEPT AS SHOWN.
2. THE AREA SHOWN HEREON IS LOCATED IN FLOOD HAZARD ZONE 'X' (AREAS TO BE DETERMINED TO BE OUTSIDE THE 0.2% ANNUAL CHANCE FLOODPLAIN) BY THE FEDERAL EMERGENCY MANAGEMENT AGENCY AS SHOWN ON COMMUNITY-PANEL MAP #51161 C0164G DATED REVISED SEPTEMBER 28, 2007.
3. PROPERTY LINES SHOWN HEREON ARE FROM RECORD INFORMATION AND HAVE ONLY BEEN TIED DOWN IN THE FIELD ADEQUATELY ENOUGH TO USE FOR GENERAL INFORMATION PURPOSES ONLY.
4. PUBLIC UTILITIES SHOWN ARE PER FIELD MARKINGS FROM MISS UTILITY OF VIRGINIA TICKET #8806301915 DATED MARCH 6, 2008.
5. THIS DRAWING WAS PREPARED AT THE REQUEST OF APPALACHIAN POWER COMPANY.
6. CONTRACTOR TO BE AWARE OF ACTIVE UNDERGROUND AND/OR OVERHEAD UTILITIES IN THIS AREA.

EXISTING SANITARY SEWER SCHEDULE

- (A) SANITARY SEWER MANHOLE
TOP ELEV.=981.16
INV.IN=976.3
INV.OUT=976.2
- (B) SANITARY SEWER MANHOLE
TOP ELEV.=981.43
INV.IN=976.6
INV.OUT=976.4
- (C) SANITARY SEWER MANHOLE
TOP ELEV.=985.73
INV.IN 'A'=980.9
INV.IN 'B'=981.4
INV.IN 'C'=981.3
INV.IN 'D'=980.5
INV.OUT=980.4
TO BE PLUGGED BY OTHERS
- (D) SANITARY SEWER MANHOLE TO BE ABANDONED BY OTHERS
TOP ELEV.=991.96
INV.IN=988.0
INV.OUT=987.9
TO BE PLUGGED BY OTHERS

SEE SHEET 2a FOR SANITARY SEWER AS-BUILT

HURT AND PROFFITT, INC. PROJECT NO. 20080140
G.I. NO. 260-07-A5.3
FILE NO. G-12176

HURT & PROFFITT
ENGINEERING >> SURVEYING >> PLANNING
INCORPORATED
2524 LANGHORNE ROAD
LYNCHBURG VA 24501
800.242.4906 TOLL FREE
434.847.7796 MAIN
434.847.0047 FAX

OLD DWG: [] STD DWG: []
THIS DRAWING IS THE PROPERTY OF AMERICAN ELECTRIC POWER AND IS LOANED UPON CONDITION THAT IT IS NOT TO BE COPIED OR REPRODUCED, IN WHOLE OR IN PART, OR USED FOR FURNISHING INFORMATION TO ANY PERSON WITHOUT THE WRITTEN CONSENT OF AMERICAN ELECTRIC POWER, OR FOR ANY PURPOSE DETRIMENTAL TO THEIR INTEREST, AND IS TO BE RETURNED UPON REQUEST.

APPALACHIAN POWER COMPANY
SEVENTH ST. SUBSTATION EXPANSION
CITY OF ROANOKE, VIRGINIA

EXISTING CONDITIONS AND DEMOLITION PLAN

SCALE: 1" = 30'	DR: JWG	ENG: MDW	CH: FHJ/RAH
WON:	APPD:	DATE: 07/10/08	
1 RIVERSIDE PLAZA COLUMBUS, OH 43215	DWG. NO. 2 OF 10		

V:\LandProjects\20080140\dwg\EXISTING.dwg