





IPF	IRON PIN FOUND
SP#	ELECTRIC POLE
→	GUY WIRE
QT#	TELEPHONE POLE
☆	LIGHT POLE
⊗	SANITARY MANHOLE
⊕	FIRE HYDRANT
⊗	GAS VALVE
⊕	WATER MANHOLE (MAY BE WATER VALVE WITHIN STRUCTURE)
⊕	WATER VALVE
↻	BENCHMARK
⊕	SIGN
H E	OVERHEAD ELECTRIC
H T	OVERHEAD TELEPHONE
CTV	OVERHEAD CABLE TV
FO	OVERHEAD FIBER OPTIC
NW	OVERHEAD NETWORK CABLE
FO	UG FIBER OPTIC/CABLE LINE
G G	UG GAS LINE
G E	UG ELECTRIC LINE
SS	UG SAN. SEWER LINE
W	UG WATER LINE
—+—	CONCRETE SIDEWALK
RGC	ROANOKE GAS COMPANY
TC	TERRA COTTA PIPE
DIP	DUCTILE IRON PIPE
—○—	EXISTING FENCE
-----	EXISTING 2' CONTOUR
-----	EXISTING 10' CONTOUR
-----	RIGHT OF WAY
0.00 0.00	EXISTING ELEVATION AT TOP OF SUBGRADE

 CHAIN LINK FENCE
 SANITARY SEWER MANHOLE
 PROPOSED SANITARY SEWER
 BMP/RAINTANK LOCATION
 RRAINTANK MAINTENANCE PORT
 PROPOSED ELEVATION AT TOP OF SUBGRADE

**OR TO BE AWARE OF UNDERGROUND
AD UTILITIES IN THESE AREAS**

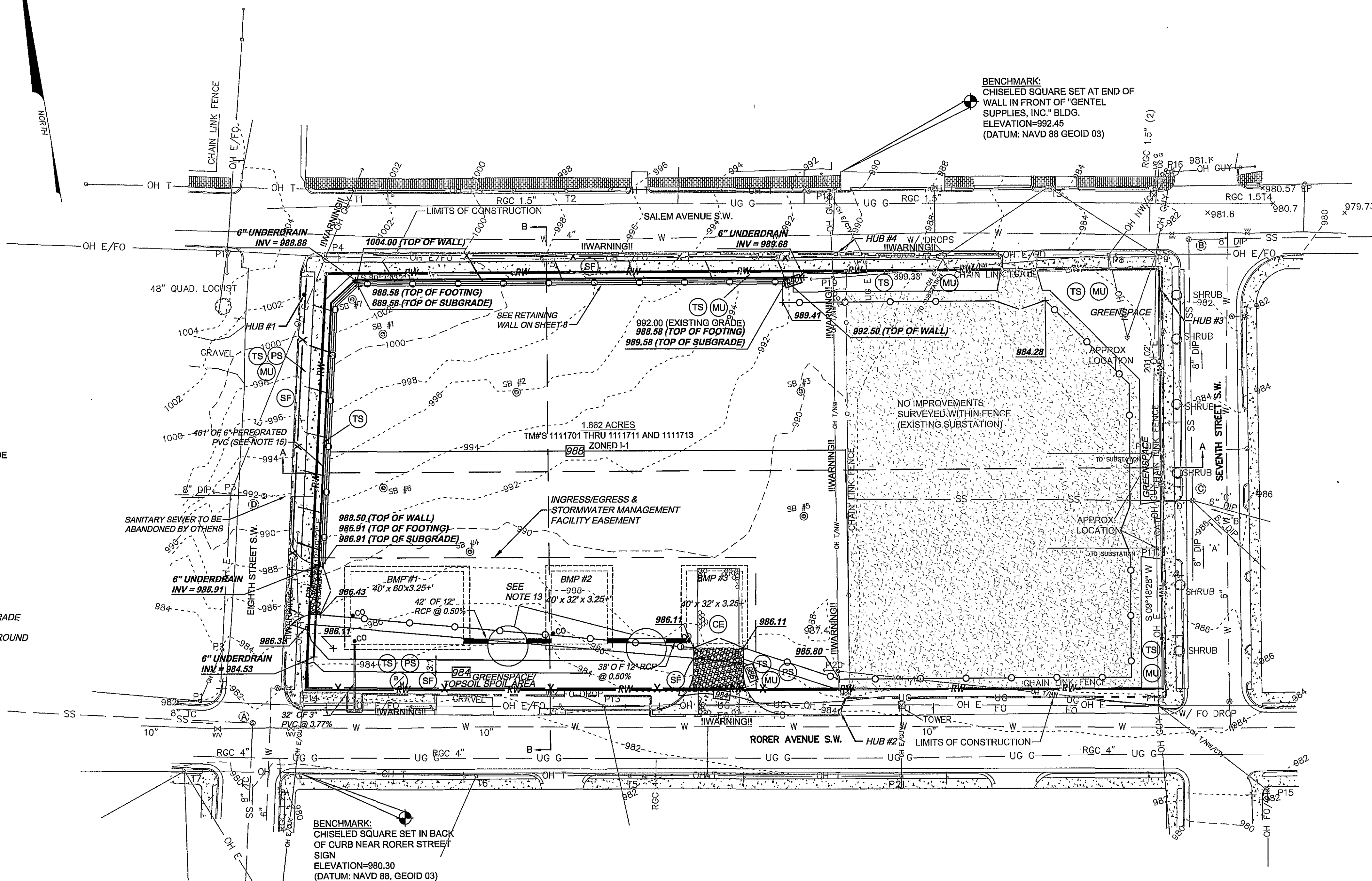
* CHART TAKEN FROM THE VIRGINIA EROSION AND SEDIMENT CONTROL HANDBOOK (JULY 1992)

CE	TEMPORARY CONSTRUCTION ENTRANCE
SF	SILT FENCING
TS	TEMPORARY SEEDING
PS	PERMANENT SEEDING
MU	MULCH
B/M	BLANKET MATTING
DD	TEMPORARY DIVERSION DIKE
ST	TEMPORARY SEDIMENT TRAP

REFERENCE HUB TABLE		
NAME	NORTHING	EASTING
HUB #1	N = 3626208.59	E = 11059420.26
HUB #2	N = 3625968.69	E = 11059639.47
HUB #3	N = 3626141.20	E = 11059825.45
HUB #4	N = 3626184.59	E = 11059675.12

THE ENGINEER AND/OR SURVEYOR TAKES NO RESPONSIBILITY FOR THE LOCATION OR ACCURACY OF THE UTILITIES AS SHOWN HEREON OR ANY UTILITIES WITHIN THE PROJECT THAT MAY NOT BE SHOWN HEREON. THE CONTRACTOR SHALL BE RESPONSIBLE FOR CONTACTING THE UTILITY COMPANIES TO SEE IF ANY UTILITIES EXIST WITHIN THE AREA OF THE PROJECT BEFORE ANY CONSTRUCTION BEGINS. ANY COST INCURRED BY DAMAGING ANY UTILITY WITHIN THE PROJECT SHALL BE AT THE EXPENSE OF THE CONTRACTOR.

48 WORKING HOURS PRIOR TO STARTING THE WORK, THE CONTRACTOR SHALL CALL MISS UTILITY AT 811 AND ADVISE THE NATURE AND LOCATION OF THE WORK.

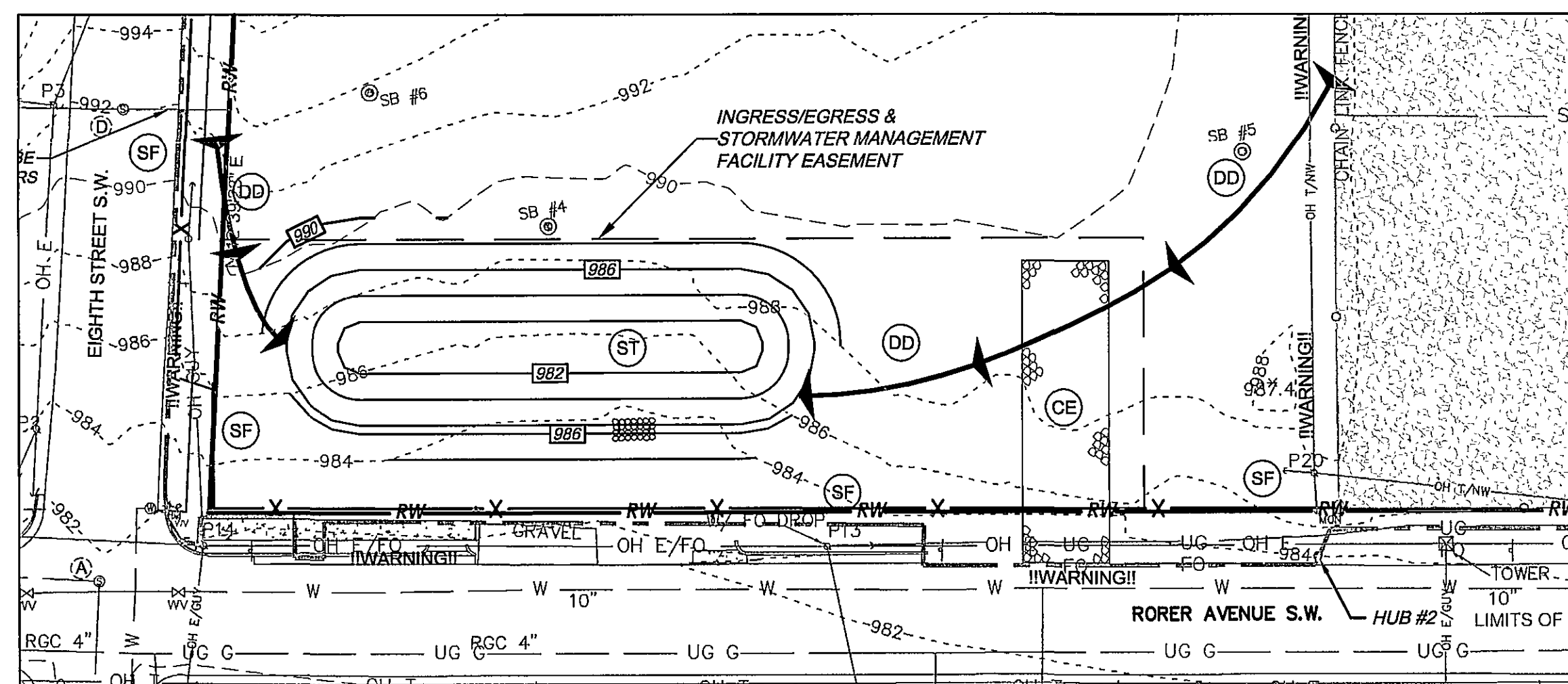


EXISTING SANITARY
SEWER SCHEDULE

- (A) SANITARY SEWER MANHOLE
TOP ELEV.=981.16
INV.IN=976.3
INV.OUT=976.2
- (B) SANITARY SEWER MANHOLE
TOP ELEV.=981.43
INV.IN=976.6
INV.OUT=976.4
- (C) SANITARY SEWER MANHOLE
TOP ELEV.=985.73
INV.IN 'A'=980.9
INV.IN 'B'=981.4
INV.IN 'C'=981.3
INV.IN 'D'=980.5 ← TO BE PLUGGED
BY OTHERS
INV.OUT=980.4
- (D) SANITARY SEWER MANHOLE TO BE ABANDONED
BY OTHERS
TOP ELEV.=991.96
INV.IN=988.0
INV.OUT=987.9 ← TO BE PLUGGED
BY OTHERS

GENERAL GRADING NOTES:

1. ALL AREAS SHOWN TO BE DISTURBED SHALL BE CLEARED AND GRUBBED AND ALL VEGETATIVE MATTER REMOVED AND DISPOSED OF IN ACCORDANCE WITH CITY OF ROANOKE REQUIREMENTS.
2. CONTRACTOR SHALL REMOVE ALL TOPSOIL (6" DEPTH ASSUMED, BUT MAY VARY) ACROSS PROJECT LIMITS AND STOCKPILE AT LOCATION UTILIZING EROSION AND SEDIMENT CONTROLS. UPON COMPLETION OF SUBSTANTION GRADING AND CONSTRUCTION SHOWN, TOPSOIL SHALL BE SPREAD AT A THICKNESS OF 5" (4" MIN.) OVER ALL DISTURBED AREAS OUTSIDE SUBSTATION PA. EXCESS MATERIAL SHALL BE DISPOSED OF OFF SITE. CONTRACTOR SHALL BE RESPONSIBLE FOR DEVELOPING AND ADHERING TO AN EROSION AND SEDIMENT CONTROL PLAN FOR THE OFF SITE DISPOSAL AREA. ALL DISTURBED AREAS SHALL BE SEEDED AND MULCHED AS NOTED ON SHEET 3. CONTRACTOR SHALL STRICTLY OBSERVE LIMITS OF CONSTRUCTION.
3. ALL SLOPES 3:1 AND STEEPER SHALL BE STABILIZED WITH 1" VERTICAL (3:1), 1" HORIZONTAL (3:1) EROSION CONTROL MAT. SEE SHEET 5.
4. SEE SHEET 5 FOR EROSION & SEDIMENT CONTROL NARRATIVE, NOTES, AND DETAILS.
5. SEE SHEET 6 FOR SECTIONS A-A AND B-B.
6. SPOT ELEVATIONS SHOWN ARE TO SUBGRADE. AGGREGATE SURFACE TO BE PLACED BY OTHERS ATOP SUBGRADE (SEE DETAIL, SHEET 6).
7. SEE SANITARY SEWER RELOCATION PLANS DATED 06/13/08 BY HURT & PROFFITT FOR DETAILS OF SEWER RELOCATION.
8. SEE BMP DETAILS ON SHEET 7 OF 10.
9. CONTRACTOR SHALL INSTALL CONSTRUCTION ENTRANCE, SEDIMENT TRAP, DIVERSION DIKES, AND SILT FENCES PRIOR TO ANY LAND DISTURBANCE.
10. SEDIMENT TRAP SHALL REMAIN IN PLACE DURING THE MAJORITY OF THE GRADING.
11. ONCE UPLAND AREA IS STABILIZED THE SEDIMENT TRAP SHALL BE DEWATERED, REMOVED, AND FINAL GRADING SHALL OCCUR (INCLUDING INSTALLING RAIN TANKS).
12. CONTRACTOR SHALL INSTALL 12" RCP PVC CONDUIT WHICH WILL BE INSTALLED THROUGH THIS AREA. CONTRACTOR SHALL COORDINATE THE INSTALLATION OF THE CONCRETE ENCASED PVC CONDUIT PRIOR TO THE PLACEMENT OF THE 12" RCP PIPE TO ENSURE CLEARANCES ARE CORRECT. SEE SHEET 7 BMP CONNECTION DETAIL.
13. CONTRACTOR TO INSTALL SAFETY FENCING AS NEEDED TO DISCOURAGE PEDESTRIANS FROM ENTERING WORK AREA. SEE DETAIL ON SHEET 6 OF 10.
14. PERFORATED 6" PVC UNDERDRAIN PIPE WITH SOCK SHALL BE PLACED ALONG WALL TO PROVIDE DRAINAGE. SOCK SHALL BE SURROUNDED BY A MINIMUM OF 4" #57 STONE.



PHASE 1 EROSION PLAN
(SEE NOTE 10)

HURT AND PROFFITT, INC. PROJECT NO. 20080140
G.I. NO. 260-07-A5.3
FILE NO. G-12176

HURT & PROFFITT
INCORPORATED
2524 LANGHORNE ROAD
LYNCHBURG VA 24501
800.242.4906 TOLL FREE
434.847.7796 MAIN
434.847.0047 FAX


* ENGINEERING >> SURVEYING >> PLANNING



OLD DWG :	STD DWG :
*THIS DRAWING IS THE PROPERTY OF AMERICAN ELECTRIC POWER AND IS LOANED UPON CONDITION THAT IT IS NOT TO BE COPIED OR REPRODUCED, IN WHOLE OR IN PART, OR USED FOR FURNISHING INFORMATION TO ANY PERSON WITHOUT THE WRITTEN CONSENT OF AMERICAN ELECTRIC POWER, OR FOR ANY PURPOSE DETRIMENTAL TO THEIR INTEREST, AND IS TO BE RETURNED UPON REQUEST.	

APPALACHIAN POWER COMPANY
7th STREET STATION EXPANSION
CITY OF ROANOKE VIRGINIA

GRADING AND EROSION AND SEDIMENT CONTROL PLAN

SCALE: AS NOTED	DR: NRH/JWG	ENG: MDW	CH: FHJ/RAH
 AMERICAN[®] ELECTRIC POWER	WO#: 1 RIVERSIDE PLAZA COLUMBUS, OH 43215	APPD: MDW	DATE: 07/10/08
	DWG. NO. 4 OF 10		REV

V:\LandProjects\20080140\dwg\SITE.dwg