



TREE & SHRUB LEGEND

SEE SITE LAYOUT PLAN LEGEND FOR SYMBOL DEFINITIONS ON GRAYSCALED BASE.



WARNING!!

DO NOT BEGIN WORK UNTIL BRIEFED DAILY BY THE GENERAL CONTRACTOR AND AEP CONSTRUCTION REPRESENTATIVE (RENE BOCANEGRA, 540-525-1740) CONCERNING CURRENT SAFETY ISSUES. THE ENERGIZED SUBSTATION IS TO BE CONSIDERED A HAZARDOUS ENVIRONMENT AND EXTREME SAFETY PRECAUTIONS MUST BE OBSERVED. FAILURE TO OBSERVE THE SPECIFIED SAFETY PRECAUTIONS WILL RESULT IN IMMEDIATE TERMINATION OF SERVICES.

HARD HATS REQUIRED AT ALL TIMES AND PROPER GROUNDING AND CLOTHING AS REQUIRED.

POTENTIAL SAFETY ISSUES INCLUDE (BUT NOT LIMITED TO) UNDERGROUND AND OVERHEAD ELECTRICAL WIRES AND OTHER UTILITIES; SHOCK POTENTIAL FROM STATION EQUIPMENT; MOVING EQUIPMENT; ETC.

ALL OVERHEAD AND UNDERGROUND LINES MUST BE MARKED AND FLAGGED BEFORE BEGINNING OF CONSTRUCTION.

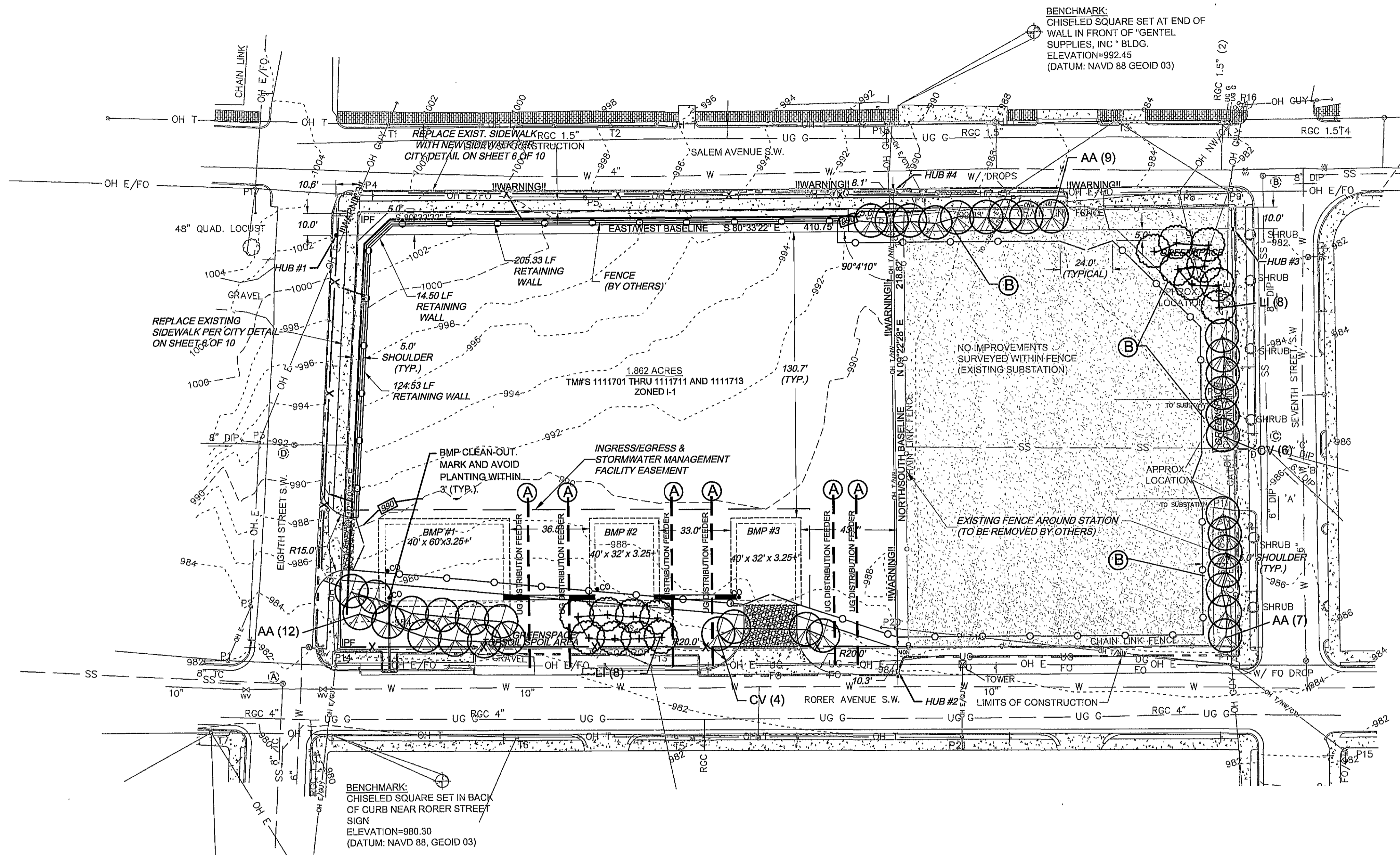
UNAUTHORIZED ENTRANCE INTO THE SUBSTATION FENCED AREA OR LIMITS IS PROHIBITED. AEP TRANSMISSION CONSTRUCTION REPRESENTATIVE MUST: APPROVE ALL WORK BEFORE PROCEEDING (DAILY) AND APPROVE ALL ACCESS, STORAGE AREAS AND EQUIPMENT TO BE UTILIZED ON SITE.

GENERAL PLANTING NOTES

1. THE LANDSCAPE CONTRACTOR SHALL MARK AND CONFIRM LOCATIONS OF UNDERGROUND UTILITIES PRIOR TO EXCAVATION. CONFLICTS SHALL BE REPORTED TO ENGINEER OR AEP FOR RESOLUTION.
2. LANDSCAPE CONTRACTOR SHALL BE RESPONSIBLE FOR ACCURATE PLANT COUNTS.
3. STAKE ALL PLANT LOCATIONS FOR AEP AND CITY'S URBAN FORESTER (OR REPRESENTATIVE) APPROVAL PRIOR TO PLANTING.
4. ALL PLANT MATERIALS SHALL MEET THE SPECIFICATIONS AND STANDARDS OF THE AMERICAN ASSOCIATION OF NURSERYMEN.
5. NO PLANT SUBSTITUTES, TYPE, OR QUANTITY DEVIATIONS FROM THE APPROVED LANDSCAPE PLANS WITHOUT PERMISSION FROM THE CITY AND AEP.
6. MAINTENANCE: CONTRACTOR WILL BE RESPONSIBLE FOR THE HEALTH AND GROWTH OF ALL NEW AND TRANSPLANTED LANDSCAPING FOR 1 YEAR UPON COMPLETION OF WORK. THIS INCLUDES WEED CONTROL, MULCHING AND REGULAR WATERING AS NECESSARY. ONE FINAL WEED CONTROL APPLICATION FOLLOWED BY (ONE WEEK LATER) MULCHING AND FERTILIZER STAKES (AS NECESSARY) SHALL BE COMPLETED 1 YEAR AFTER INSTALLATION.
7. ON-SITE WATER ACCESS (HOSE BIBB): ARRANGE WITH AEP CONSTRUCTION REPRESENTATIVE AND ADHERE TO REQUIRED SAFETY PRECAUTIONS.
8. CONTRACTOR SHALL GUARANTEE ALL WORK AND LANDSCAPING FOR 1 YEAR. REPLACE LANDSCAPING THAT IS DEAD OR APPEARS DEAD DURING MAINTENANCE. MAKE REPLACEMENTS WITHIN 30 DAYS OF NOTIFICATION (BY AEP OR CITY).
9. COORDINATE TIMING OF PLANTING WITH GENERAL CONTRACTOR.
10. SEE PLANTING SPECIFICATIONS.

THE ENGINEER AND/OR SURVEYOR TAKES NO RESPONSIBILITY FOR THE LOCATION OR ACCURACY OF THE UTILITIES AS SHOWN HEREON OR ANY UTILITIES WITHIN THE PROJECT THAT MAY NOT BE SHOWN HEREON. THE CONTRACTOR SHALL BE RESPONSIBLE FOR CONTACTING THE UTILITY COMPANIES TO SEE IF ANY UTILITIES EXIST WITHIN THE AREA OF THE PROJECT BEFORE ANY CONSTRUCTION BEGINS. ANY COST INCURRED BY DAMAGING ANY UTILITY WITHIN THE PROJECT SHALL BE AT THE EXPENSE OF THE CONTRACTOR.

48 WORKING HOURS PRIOR TO STARTING THE WORK, THE CONTRACTOR SHALL CALL MISS UTILITY AT 811 AND ADVISE THE NATURE AND LOCATION OF THE WORK.



DO NOT HEAVILY PRUNE THE TREE AT PLANTING. PRUNE ONLY CROSSOVER LIMBS, CO-DOMINANT LEADERS, AND BROKEN OR DEAD BRANCHES. SOME INTERIOR TWIGS AND LATERAL BRANCHES MAY BE PRUNED, HOWEVER, DO NOT REMOVE THE TERMINAL BUDS OF BRANCHES THAT EXTEND TO THE EDGE OF THE CROWN.

MARK THE NORTH SIDE OF THE TREE IN THE NURSERY AND ROTATE TREE TO FACE NORTH AT THE SITE WHEN EVER POSSIBLE.

MINIMUM 4" MULCH. DO NOT PLACE MULCH IN CONTACT WITH TREE TRUNK. MAINTAIN THE MULCH WEED-FREE FOR A MINIMUM OF ONE YEAR AFTER PLANTING.

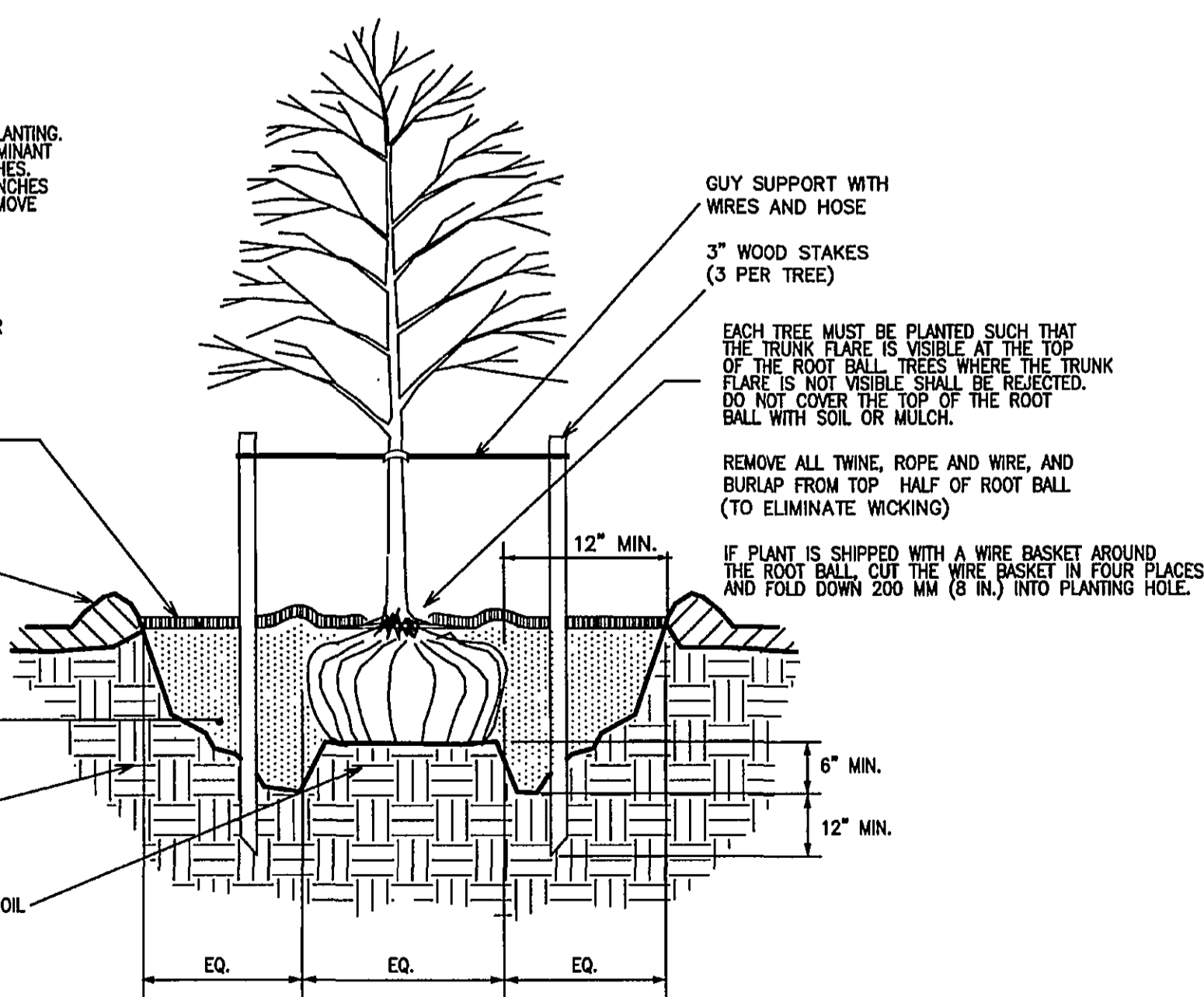
4 IN. HIGH EARTH SAUCER BEYOND EDGE OF ROOT BALL.

SPECIFIED PLANTING MIX. WATER & TAMP TO REMOVE AIR POCKETS.

UNEXCAVATED SOIL.

PLACE ROOT BALL ON UNEXCAVATED SOIL OR TAMPED SOIL.

TAMP SOIL AROUND ROOT BALL BASE FIRMLY WITH FOOT PRESSURE SO THAT ROOT BALL DOES NOT SHIFT.



1 TREE PLANTING DETAIL - BALL & BURLAP

NOT TO SCALE

NOTE: SEE PLANTING SPECIFICATIONS

PLANT LIST

KEY	COMMON NAME	BOTANICAL NAME	Min. Ht. at Planting	QUANTITY	CANOPY EACH AT 20 YEARS (SF)	TOTAL PROVIDED
AA	SERVICEBERRY	Amelanchier arborea	5' tall	28	201	5628
CV	WHITE FRINGETREE	Chionanthus virginicus	5' tall	10	113	1130
LI	GRAPE MYRTLE	Lagerstroemia indica	5' tall	16	113	1808
TOTAL CANOPY PROVIDED						8,566
OVERALL TREE CANOPY REQUIREMENTS						
SF						
TOTAL SITE AREA						
81,111.00						
10% OF TOTAL SITE AREA =						
8,111.10						
OVERALL TREE CANOPY REQUIRED =						
8,111.10						
OVERALL TREE CANOPY PROVIDED =						
8,566.00						



WARNING !! BURIED ELECTRICAL LINE. DO NOT PLANT WITHIN 5' OF MARKED LINE ON GROUND (IF NOT MARKED STOP WORK UNTIL MARKED). NOTE, THIS IS NOT THE ONLY UNDERGROUND UTILITY LINE; MARK ALL UTILITIES BEFORE WORK.



PLANTING BEDS WITHIN EXISTING SUBSTATION:

- 1) REMOVE ALL GRAVEL TO A MINIMUM DEPTH OF 30".
- 2) EXISTING GROUND GRID TO BE CUT AND MOVED BY THE GENERAL CONTRACTOR.
- 3) FILL AND COMPACT PLANTING BEDS WITH SPECIFIED SOIL MIXTURE OR TOPSOIL SPOIL FROM SITE IMPROVEMENTS.
- 4) PLANTING BEDS IF PLANTINGS ARE NOT INSTALLED WITHIN 2 WEEKS.
- 5) MULCH BEDS AS SPECIFIED AFTER PLANTING.

HURT AND PROFFITT, INC. PROJECT NO. 20080140
G.L. NO. 260-07-A5.3
FILE NO. G-12176

HURT & PROFFITT
INCORPORATED
2524 LANGHORNE ROAD
LYNCHBURG VA 24501
800.242.4906 TOLL FREE
434.847.7796 MAIN
434.847.0047 FAX

OLD DWG: STD DWG:
THIS DRAWING IS THE PROPERTY OF AMERICAN ELECTRIC POWER AND IS LOANED UPON CONDITION THAT IT IS NOT TO BE COPIED OR REPRODUCED, IN WHOLE OR IN PART, OR USED FOR FURNISHING INFORMATION TO ANY PERSON WITHOUT THE WRITTEN CONSENT OF AMERICAN ELECTRIC POWER, OR FOR ANY PURPOSE DETRIMENTAL TO THEIR INTEREST, AND IS TO BE RETURNED UPON REQUEST.

APPALACHIAN POWER COMPANY
7th STREET STATION EXPANSION
CITY OF ROANOKE VIRGINIA

LANDSCAPING PLAN AND DETAILS

SCALE: AS NOTED	DR: NRH/JWG	ENG: MDW	CH: FHJ/RAH
WON:	APPD: MDW	DATE: 07/17/08	
1 RIVERSIDE PLAZA COLUMBUS, OH 43215	DWG. NO. 9 OF 10		

NO	DATE	REVISION DESCRIPTION	DR	ENG	CK	ISSUE#
----	------	----------------------	----	-----	----	--------