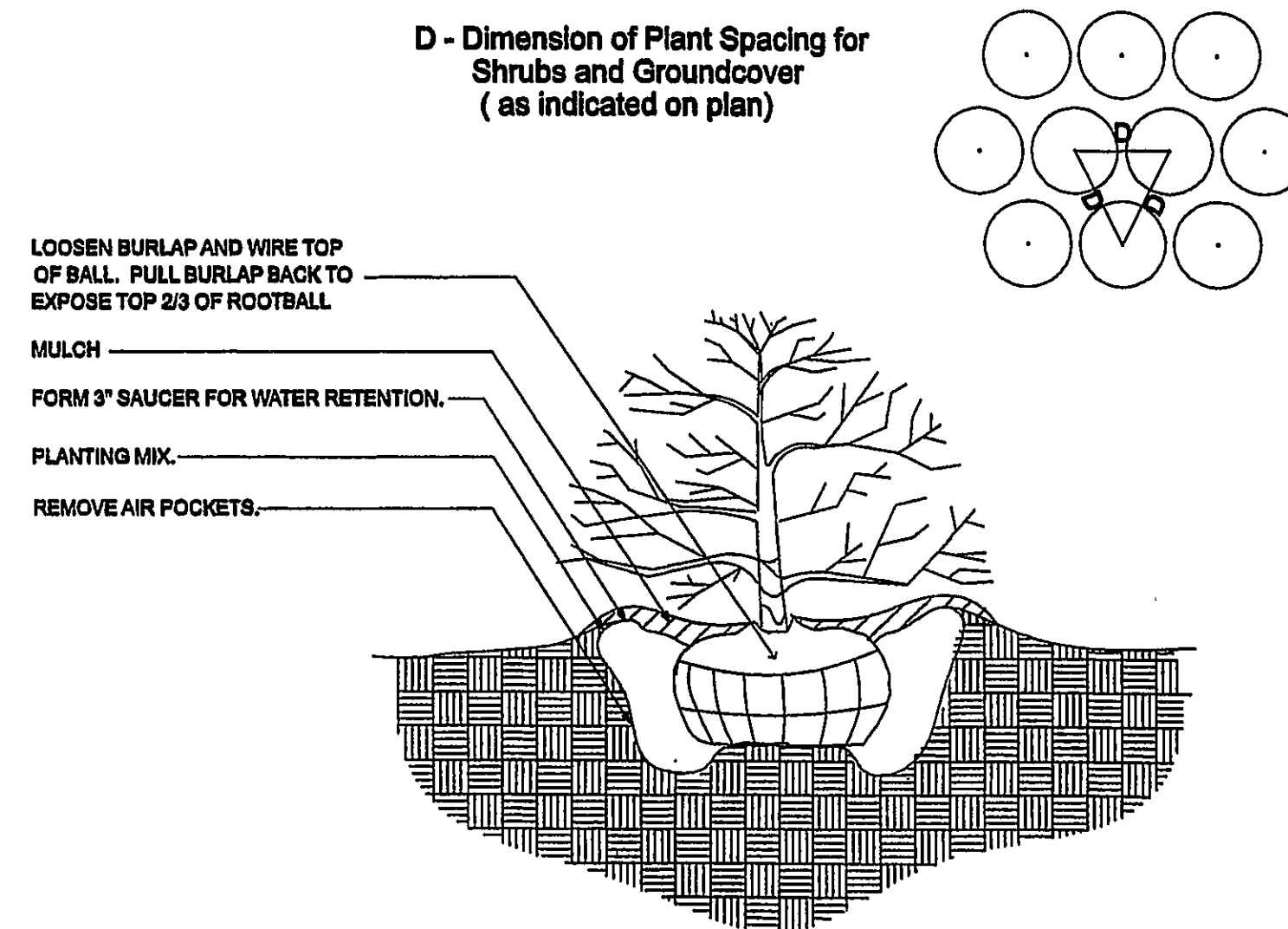
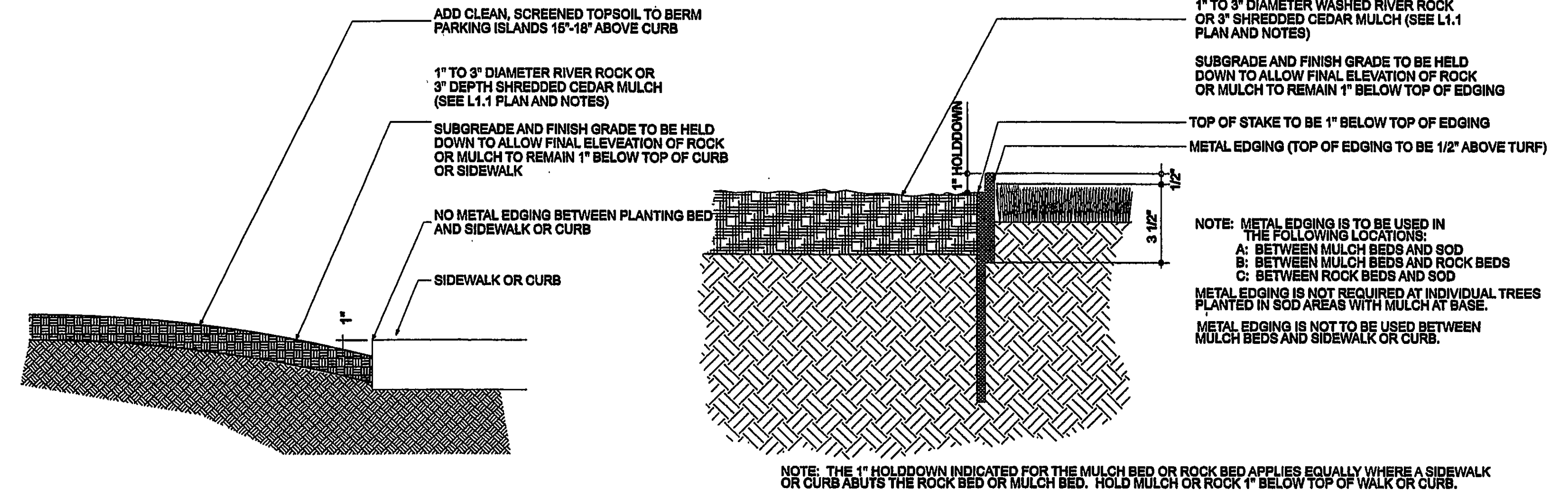


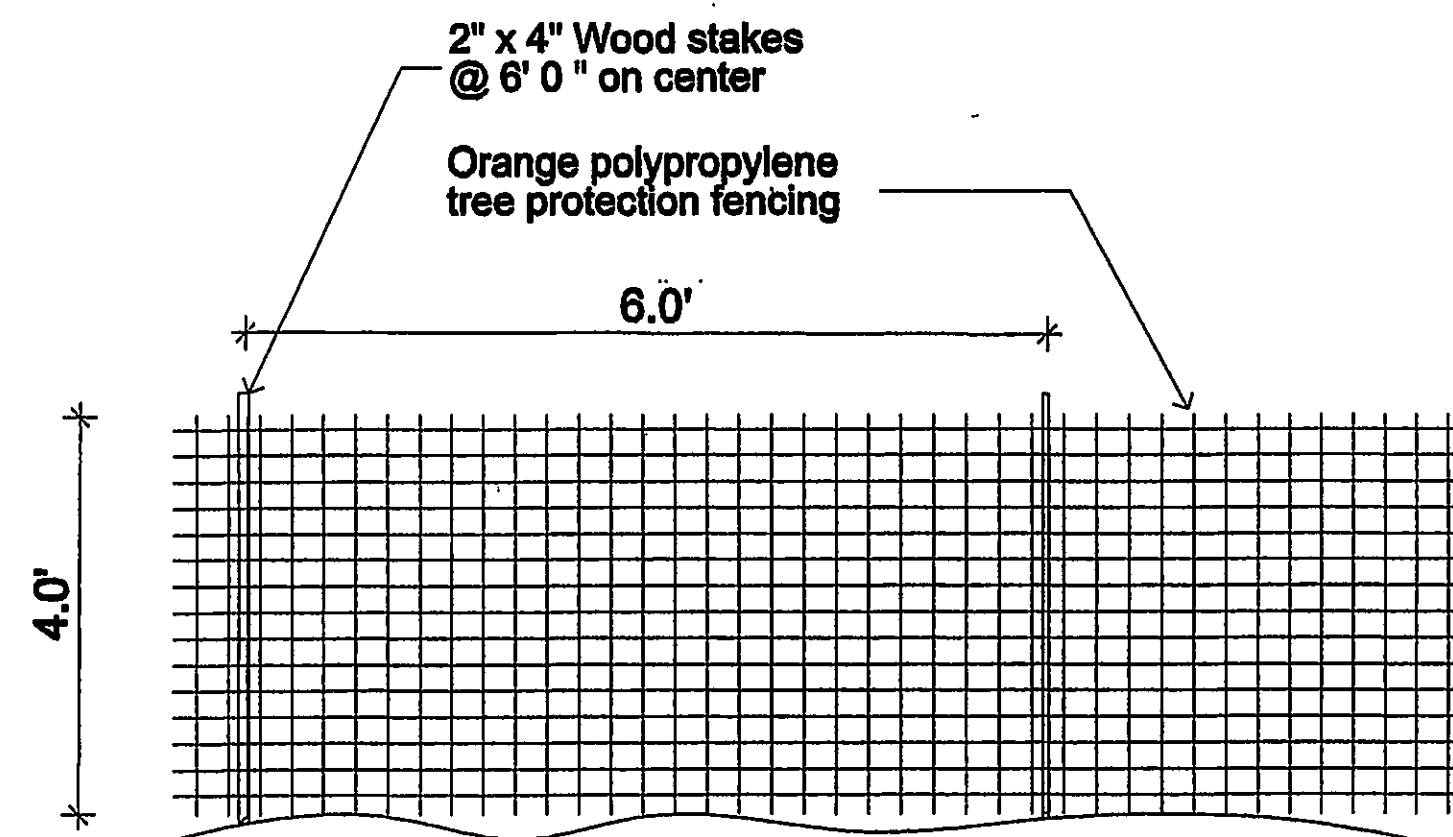
L3.1-01 TREE STAKING/PLANTING DETAIL  
N.T.S.



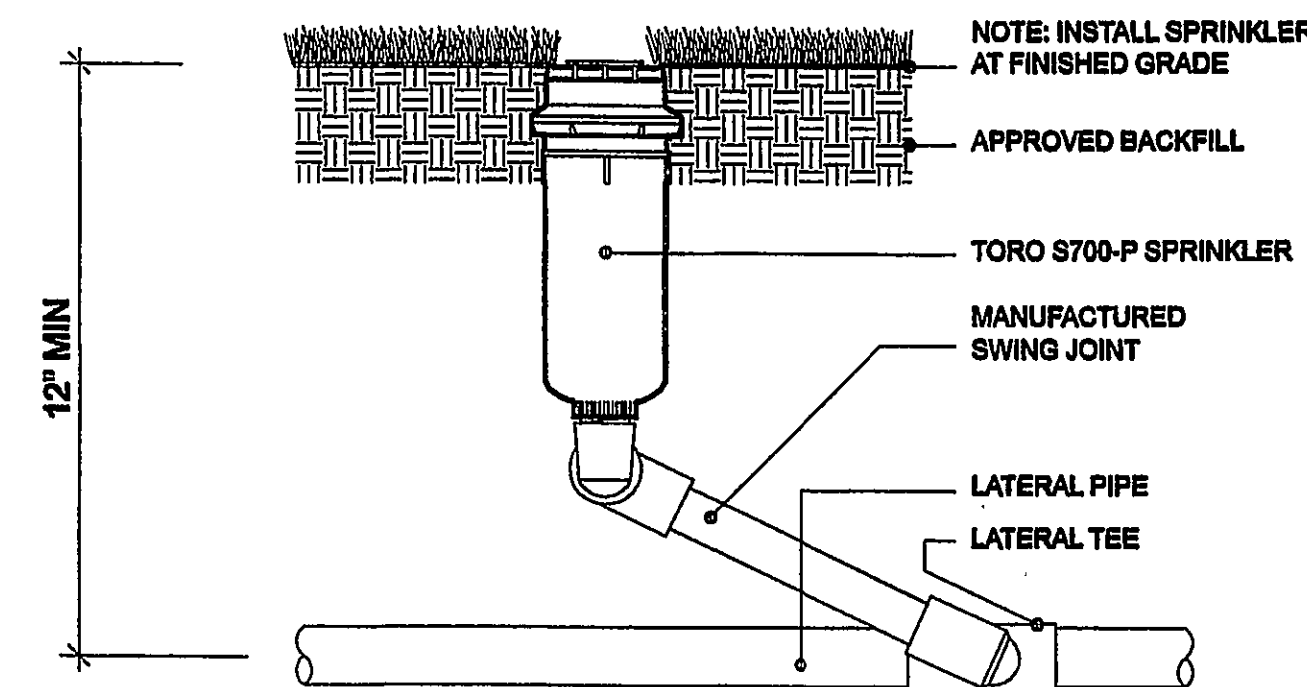
L3.1-02 SHRUB PLANTING DETAIL  
N.T.S.



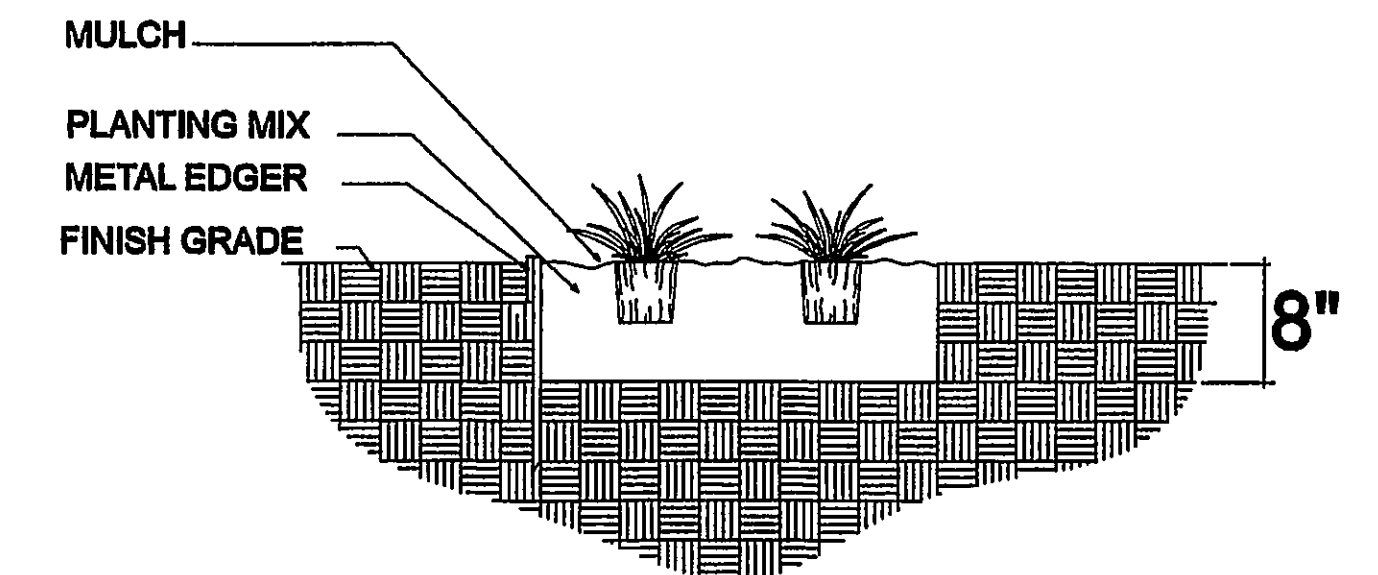
L3.1-03 METAL EDGING AND EDGE OF BED DETAIL  
N.T.S.



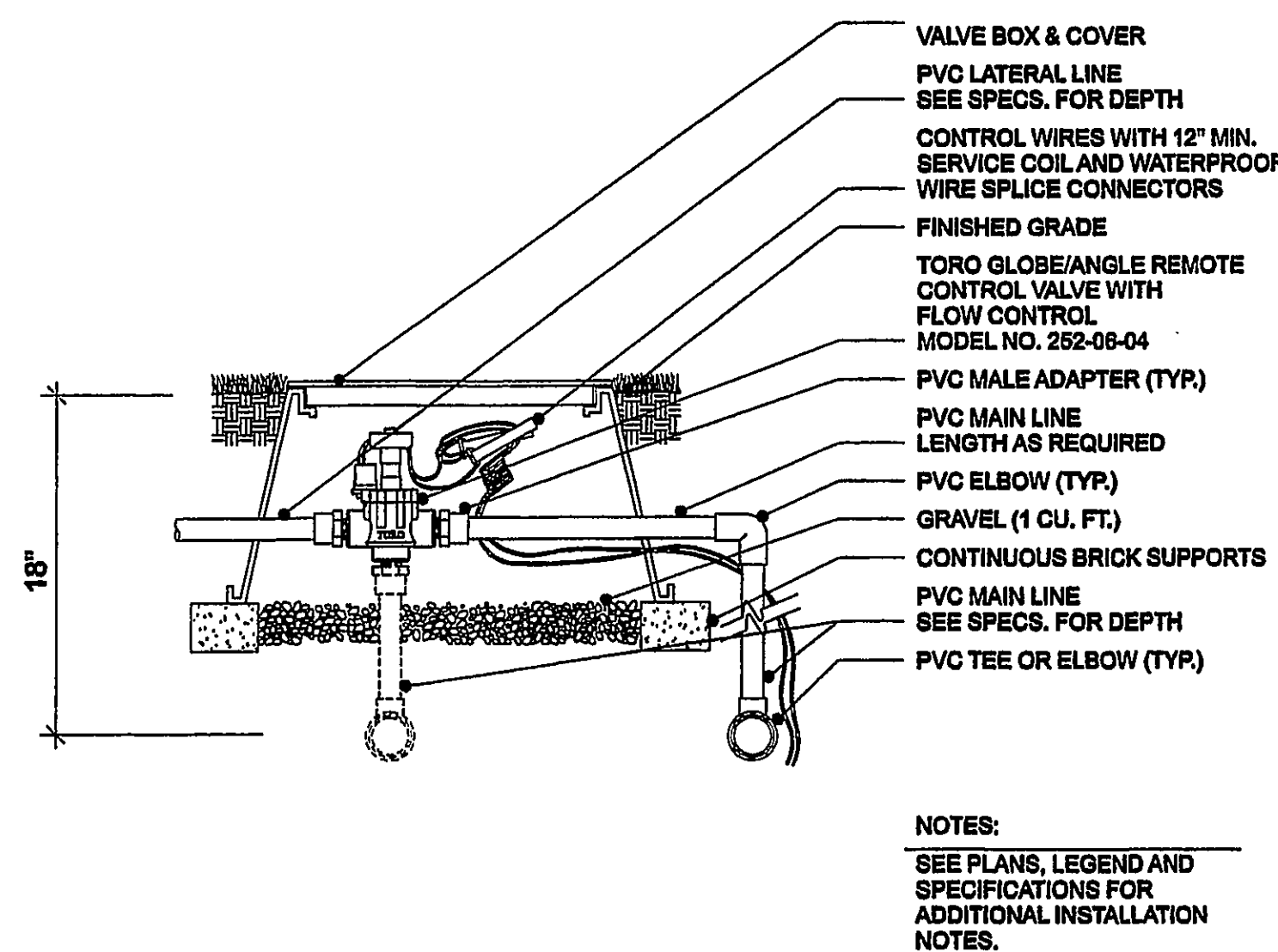
L3.1-04 TREE PROTECTION FENCING DETAIL  
N.T.S.



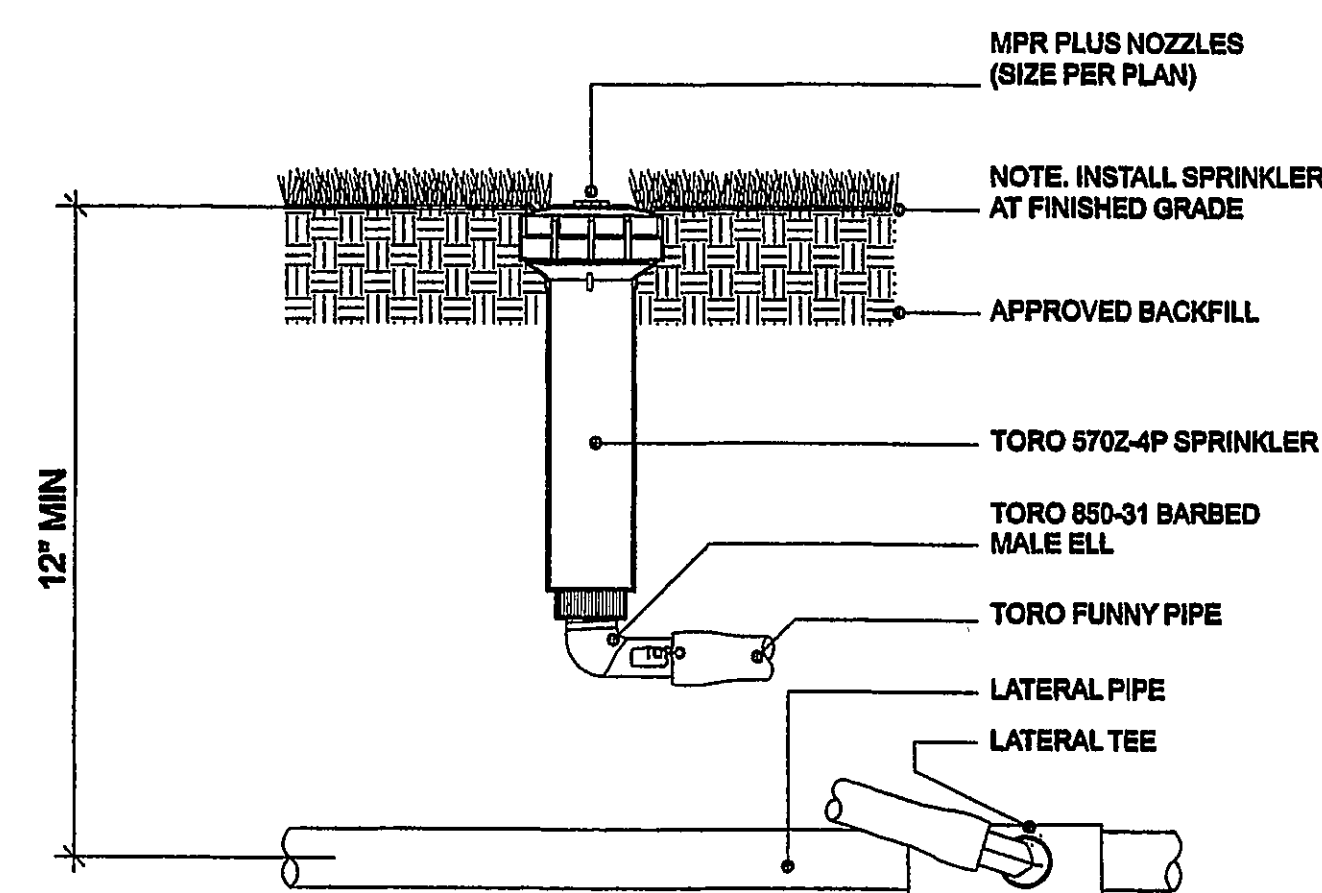
L3.1-05 ROTOR INSTALLATION DETAIL



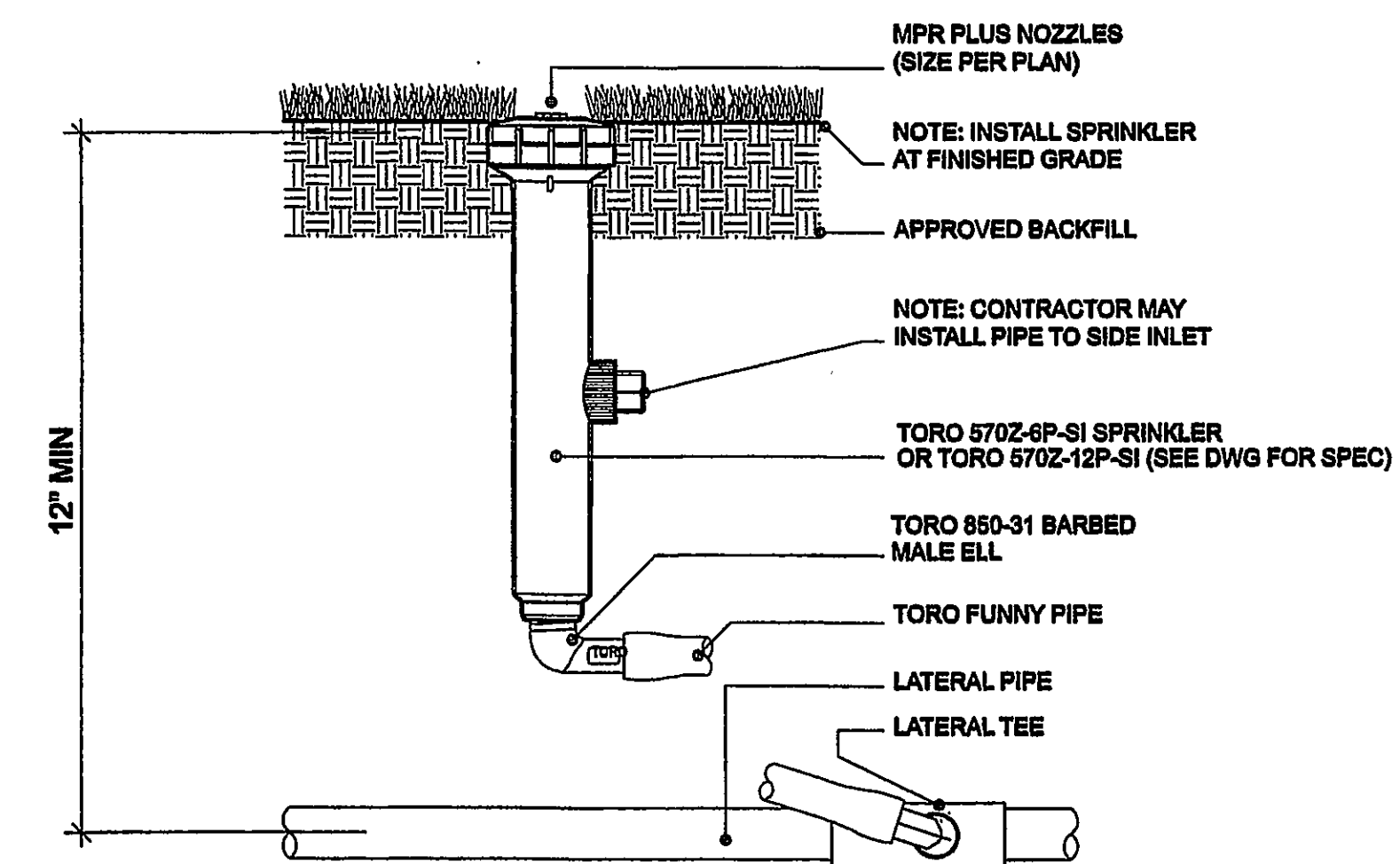
L3.1-06 GROUNDCOVER PLANTING DETAIL  
N.T.S.



L3.1-07 1" ELECTRIC VALVE DETAIL  
N.T.S.



L3.1-08 4" POP UP SPRAY HEAD  
N.T.S.



L3.1-09 6" & 12" POP UP SPRAY HEAD  
N.T.S.

**MANLEY LAND DESIGN INC.**  
landscape architecture  
51 old cotton street, alpharetta, georgia 30004  
ph 770-442-0171 fax 770-442-1123  
manley@manleylanddesign.com

**Applebee's**  
Neighborhood Grill & Bar

This document, and all plans, specifications and other information contained herein, are the exclusive property of APPLEBEE'S INTERNATIONAL, INC. These documents are prepared and accepted by you in full and on the understood condition that neither these documents nor the information contained therein will be copied, reproduced, or delivered for any purpose without the prior written consent of APPLEBEE'S INTERNATIONAL, INC. No reproduction or use (copy) shall be made without the express written consent of APPLEBEE'S INTERNATIONAL, INC. This design represented by these documents and plans is the exclusive property of APPLEBEE'S INTERNATIONAL, INC. and may not be used or copied without the express written consent of APPLEBEE'S INTERNATIONAL, INC. These documents and all copies will be returned to APPLEBEE'S INTERNATIONAL, INC. upon request.

APPLEBEE'S INTERNATIONAL, INC. © 1997

Roanoke, VA

**L3.1**

March 6, 2006

LANDSCAPE DETAILS

WVWA ID# 6PAL88