

# **SITE PLAN**

SCALE: 1"=10'-0"

RICHARD T. WELLINS DRIVE

EXISTING RAILROAD TRACKS  
(NOT IN USE)

POST INDICATOR VALVE

PROPOSED FIRE SPRINKLER VAULT WITH A 6" FLANGED DETECTOR CHECK WITH A TOUCH HEAD METER AND METERED BYPASS MOUNTED IN THE HATCH AND A 6" OS&Y GATE VALVE WITH HAND WHEEL. ACCESS FINAL LOCATION TO BE COORDINATED WITH WYWA.

VAULT TO BE LOCATED WHERE THERE WILL BE NO TEARING UP OF THE EXISTING ROANOKE GREENWAY TRAIL. FIELD VERIFY LOCATIONS BEFORE INSTALLING.

EXISTING WYWA HYDRANT #12100  
STAT: 76 PSI  
RESIDUAL: 26 PSI  
FLOW: 650 GPM  
Test taken by Roanoke City Fire Department on November 1, 2012

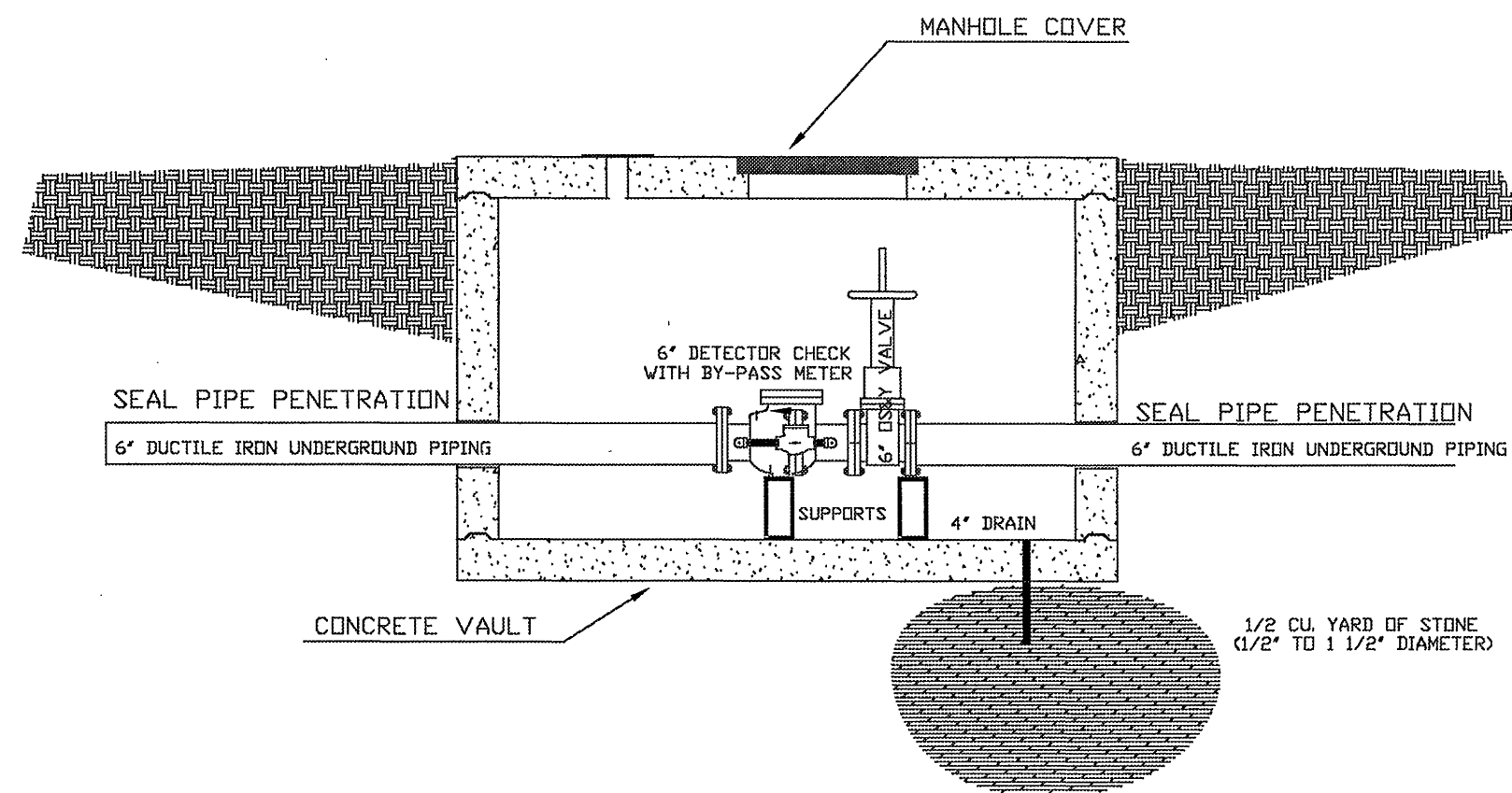
6" GATE VALVE  
6" WET TAP BY WYWA

EXISTING 6" CAST IRON UNDERGROUND

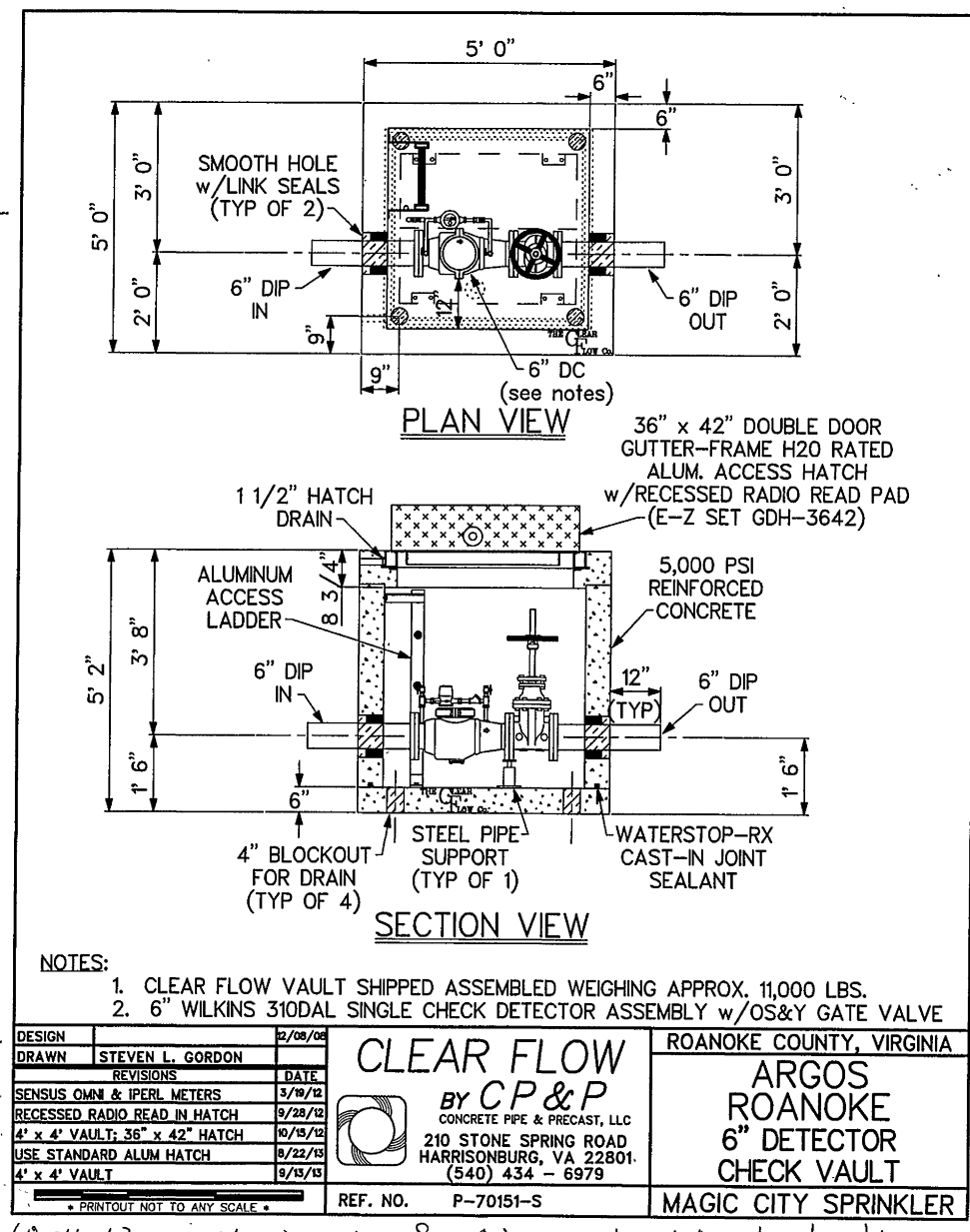
Areas 1414 Memorial Ave.

EXISTING 6" CAST IRON UNDERGROUND

MEMORIAL AVE.



10-4-13



NOTES:  
1. CLEAR FLOW VAULT SHIPPED ASSEMBLED WEIGHING APPROX. 11,000 LBS.  
2. 6" WILKINS 3100AL SINGLE CHECK DETECTOR ASSEMBLY w/OS&Y GATE VALVE

DESIGN: STEVEN L. GORDON  
DRAWN: STEVEN L. GORDON  
CHECKED: STEVEN L. GORDON  
DATE: 08-01-13

ARGOS ROANOKE  
6" DETECTOR CHECK VAULT  
MAGIC CITY SPRINKLER

10-4-13 Magic City Sprinkler Looking to do the Top next week

ISRAEL S. STEVENS  
NICET LEVEL II  
WATER BASED SYSTEMS LAYOUT  
CERTIFICATION # 130133

**Magic City Sprinkler, Inc.**  
1801 GRANDY STREET N.E. ROANOKE, VIRGINIA 24012 (540) 345-9818  
ARGOS/RICHARDSON-WAYLAND  
ROANOKE, VA  
SITE PLAN AND DETAILS  
Drawn by: S. STEVENS Permit # hspTel#  
Checked by: File Job no. 6683-13  
Scale: NOTED Date: 08-01-13 Sheet

JOB NORTH		SPRINKLER HEAD LEGEND										GENERAL NOTES				TYPICAL HANGER DETAILS		SYMBOL LEGEND				REVISIONS			Magic City Sprinkler, Inc. 1801 GRADY STREET N.E. ROANOKE, VIRGINIA 24012 (540)345-5818 ARGOS/RICHARDSON - WAYLAND ROANOKE, VA SITE PLAN AND DETAILS																																																																																																																																																																																																																																																																																																																																																																																																																																																																																																																																																																																																																																																																																																																																																																																																																																																																																																																																																																																																																																																																																																																																																																																																																																																																																																																																																																																																																																
		QTY.	SYM.	MAKE	FINISH	TEMP	K	NPT	MFG.	MDL	ESC	SIN	<div>1. ALL NEW MAIN AND BRANCHLINE PIPING TO BE SCH. 40 BLACK STEEL W/ THREADED FITTINGS OR SCH. 10 BLACK STEEL W/ GROOVED FITTINGS.</div> <div>2. ALL SPRINKLER SYSTEM MATERIALS TO BE U.L. LISTED AND/OR FACTORY MUTUAL APPROVED.</div> <div>3. PIPE HANGERS TO BE INSTALLED IN ACCORDANCE WITH THE 2007 EDITION OF NFPA 13. PIPE HANGERS ARE NOT SHOWN FOR CLARITY (FIELD VERIFY LOCATIONS).</div> <div>4. IT IS THE RESPONSIBILITY OF THE OWNER TO PROVIDE AND MAINTAIN HEAT IN ALL AREAS OF SPRINKLER SYSTEM SUBJECT TO FREEZING.</div> <div>5. ALL PAINTING AND PATCHING BY OTHERS.</div> <div>6. ALL ELECTRICAL AND FIRE ALARMS WIRING BY OTHERS.</div> <div>7. SPRINKLER HEADS ARE REQUIRED TO BE CENTERED IN CEILING TILES.</div>																																																																																																																																																																																																																																																																																																																																																																																																																																																																																																																																																																																																																																																																																																																																																																																																																																																																																																																																																																																																																																																																																																																																																																																																																																																																																																																																																																																																																																												
																																																																																																																																																																																																																																																																																																																																																																																																																																																																																																																																																																																																																																																																																																																																																																																																																																																																																																																																																																																																																																																																																																																																																																																																																																																																																																																																																																																																																																																									</