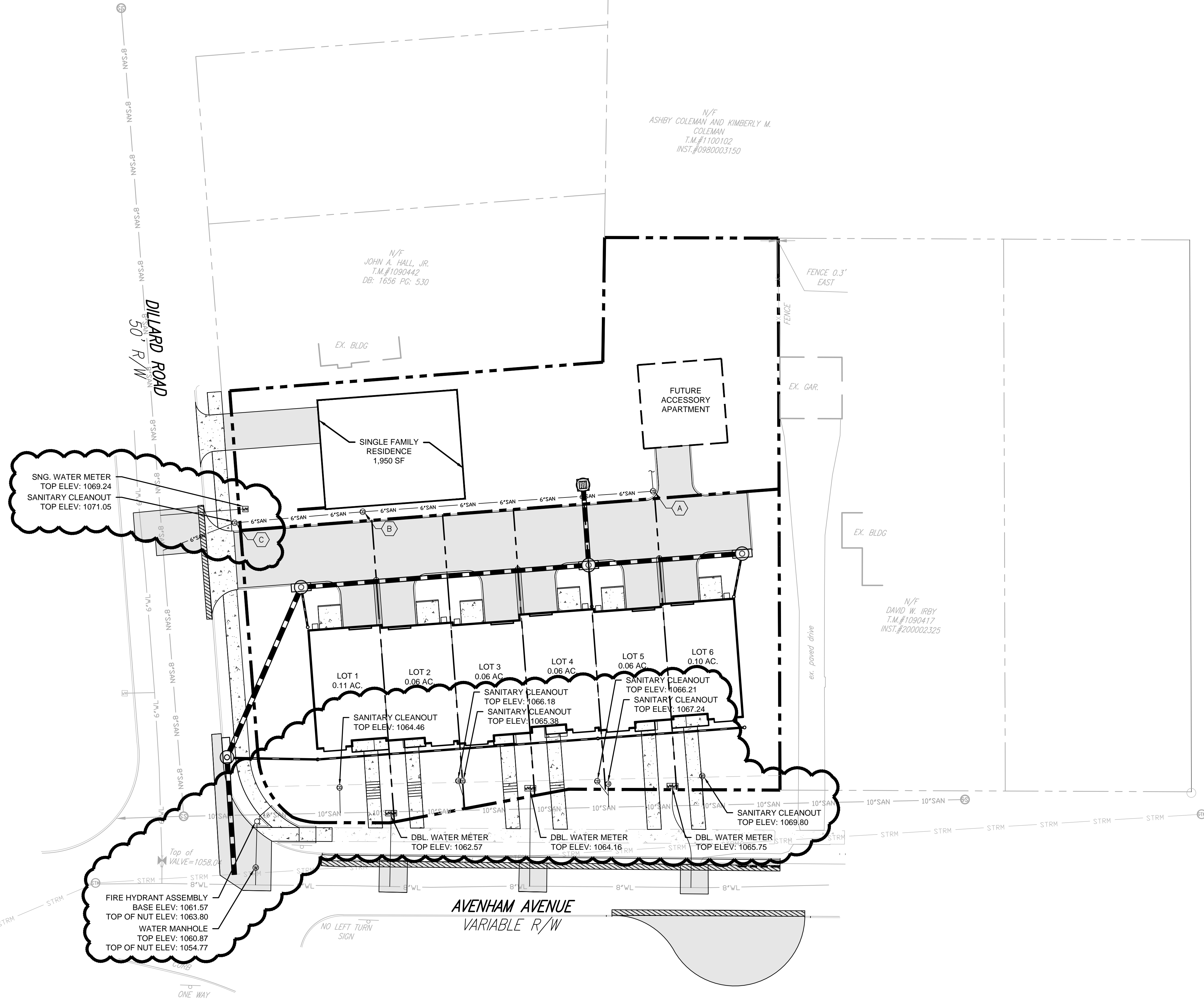


SANITARY SEWER SCHEDULE:

- (A) S.S. C.O. (PRIVATE)
TOP=1068.30
INV.=1067.70
- (A) (B) 102 LF OF 6" SDR-35 PVC AT 1.04%
- (B) S.S. C.O. (PRIVATE)
TOP=1068.00
INV.=1066.64
- (B) (C) 45 LF OF 6" SDR-35 PVC AT 1.04%
- (C) S.S. C.O. (PUBLIC)
TOP=1069.89
INV.=1071.05
- (C) ex. 8" main
30 LF OF 6" SDR-26 PVC AT 2.08%
INV. AT MAIN: 1065.55

NOTES:
1. G.C. TO CONFIRM & COORDINATE THE BUILDING TIE-IN LOCATION AND ELEVATION WITH M.E.P. AND ARCHITECTURAL DRAWINGS PRIOR TO CONSTRUCTION OF LATERAL.



N/F
ASHBY COLEMAN AND KIMBERLY M.
COLEMAN
T.M.#1100102
INST.#0980003150

N/F
JOHN A. HALL, JR.
T.M.#1090442
DB: 1656 PG: 530

N/F
DAVID W. IRBY
T.M.#1090417
INST.#200002325

AS-BUILT DRAWING NOTE:
AS-BUILT DRAWING FOR SANITARY SEWER AND WATERLINE IMPROVEMENTS ARE FOR AS-BUILT PURPOSES ONLY. NO IMPROVEMENTS OTHER THAN WATER AND SANITARY SEWER STRUCTURES WERE AS-BUILT OR INDICATED AS SUCH ON THE SUBJECT PLAN SET. UNDERGROUND PIPING WAS NOT LOCATED. LOCATION SHOWN IS APPROXIMATE BASED ON SURFACE FEATURES AND INFORMATION PROVIDED BY CONTRACTOR.



BALZER & ASSOCIATES
PLANNERS / ARCHITECTS
ENGINEERS / SURVEYORS

Roanoke / Richmond
New River Valley / Staunton
Harrisonburg / Lynchburg

www.balzer.cc

1208 Corporate Circle
Roanoke, VA 24018
540.772.9580



AVENHAM SQUARE

WATER & SEWER AS-BUILT PLAN

0 AVENHAM / SW
CITY OF ROANOKE, VIRGINIA

DRAWN BY EJP
DESIGNED BY CPB
CHECKED BY CPB
DATE 10/08/2021
SCALE 1"=20'
REVISIONS

AB1
PROJECT NO. 04190075.00