

ALL EROSION & SEDIMENT CONTROL DEVICES SHALL BE INSTALLED AS THE FIRST STEP IN GRADING OPERATIONS. REFER TO EROSION AND SEDIMENT CONTROL NARRATIVE AND DETAILS FOR MORE INFORMATION.

GRADING MATERIAL: TO BE USED FOR EARTHWORK AND GRADING ON THIS PROJECT IS TO BE MATERIALS FROM WITHIN THE SITE OR OFFSITE MATERIALS CAPABLE OF ACHIEVING THE FOLLOWING PERFORMANCES AS DETERMINED BY THE SOILS ENGINEER, THE SOILS ENGINEER BEING A PROFESSIONAL ENGINEER, REGISTERED IN VIRGINIA, ROUTINELY ENGAGED IN THE TESTING AND ASSESSMENT OF SOILS AND OTHER FOUNDATION AND ROADWAY MATERIALS.

BUILDING AREAS: CAPABLE OF POSSESSING A SOIL BEARING CAPACITY OF 1500 PSF AFTER COMPACTION TO 98% MAXIMUM DENSITY, MODIFIED PROCTOR, ASTM D1557.

PREPARATION OF SITE FOR EXCAVATION OR PLACEMENT OF FILL:
PRIOR TO EXCAVATION OR FILLING OPERATIONS THE AFFECTED AREA OF THE SITE SHALL BE STRIPPED OF TOPSOIL, IF ANY IS PRESENT, AND THE RESULTING VOLUME OF TOPSOIL SHALL BE STOCKPILED FOR LATER USE AT A LOCATION APPROVED BY THE OWNER.

PRIOR TO PLACEMENT OF FILL THE STRIPPED AREA TO RECEIVE FILL SHALL BE PROOFROLLED WITH A LOADED DUMP TRUCK. IF AREAS EXIST WHERE THE SOIL DEPRESSES OR "PUMPS" BELOW THE TRUCKS WHEELS AFTER A FEW PASSES, THE AREAS ARE TO BE EXAMINED BY THE SOILS ENGINEER FOR ASSESSMENT AND DETERMINATION OF REMEDIAL MEASURES.

PLACEMENT OF FILL: MATERIAL TO BE USED AS FILL SHALL BE GRAVEL OR ONSITE SOIL MATERIAL, ONSITE WHICH CAN MEET THE ABOVE CRITERIA, AND SHALL BE FREE OF PLANTS, GRASS, TREE ROOTS, TRASH, OR OTHER ORGANIC OR OTHERWISE DELETERIOUS MATERIAL. TOPSOIL IS NOT TO BE USED FOR FILL MATERIAL. FILL MATERIAL SHALL BE FREE OF ICE. FILL MATERIAL SHALL BE OF SUCH A MOISTURE CONTENT THAT SUCCESSFUL COMPACTION CAN BE ACHIEVED. ROCK MATERIAL WITH LARGEST DIMENSION OF NO MORE THAN 12" IS ALLOWED IN THE FILL MATERIAL. LARGER ROCKS MAY BE INCLUDED ONLY WITH SPECIFIC DIRECTIONS FROM THE SOILS ENGINEER AS TO PLACEMENT IN THE FILL AND SPECIAL COMPACTION AROUND THEM. ROCKS LARGER THAN 12" SHALL NOT BE PLACED IN FILL BENEATH BUILDING AREAS.

THE SURFACE OF SUBGRADES TO RECEIVE FILL SHALL BE SCARIFIED IMMEDIATELY PRIOR TO PLACEMENT OF FILL. FILL SHALL BE PLACED IN LIFTS NOT EXCEEDING 12" IN THICKNESS WITH ANY ROCK MATERIAL UNIFORMLY DISTRIBUTED WITHIN THE LIFT. COMPACTION SHALL PROCEED, USING COMPACTION EQUIPMENT COMPATIBLE WITH THE MATERIAL. UPON COMPLETION OF COMPACTION THE LIFT SHALL BE TESTED FOR COMPACTION WITH THE FOLLOWING TEST DISTRIBUTION:

BUILDING AREAS: ONE TEST PER LIFT PER 3000 SQUARE FEET
ANY LIFT WHICH DOES NOT MEET COMPACTION REQUIREMENTS SHALL BE SCARIFIED TO
A DEPTH EQUAL TO ITS THICKNESS AND RECOMPACTED.

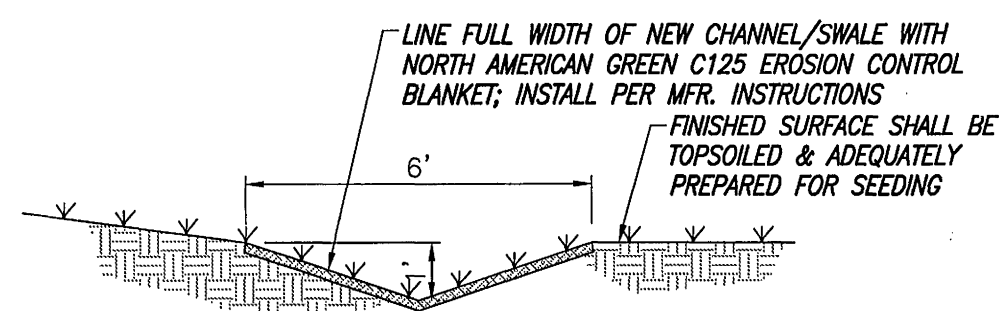
FINE GRADING:
YARD AREAS AND SUBGRADE TO RECEIVE PAVEMENT SHALL BE FINE GRADED WITH MACHINERY COMPATIBLE WITH THE MATERIAL AND LOCATION WITHIN THE SITE. CUTTINGS FROM GRADING SHALL BE SPOILED ONTO YARD AREAS AND NOT ONTO ROADWAY OR BUILDING AREAS.

PARKING AREA CONSTRUCTION

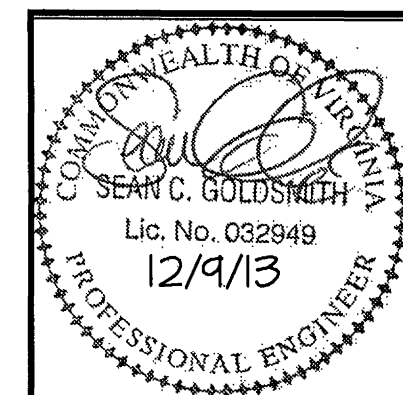
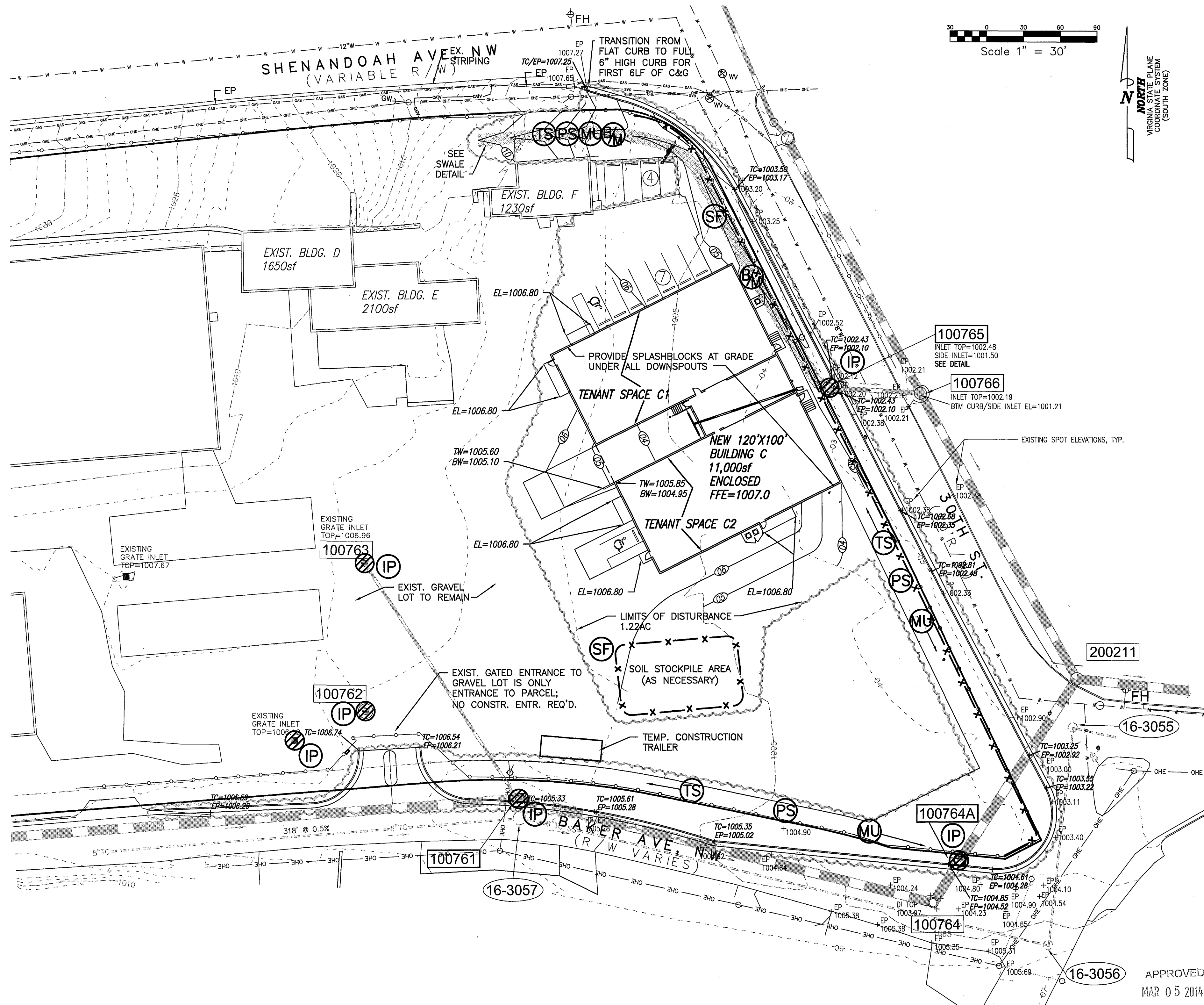
PREPARATION OF SUBGRADE:
SUBGRADE SHALL BE FINE GRADED BY CUTTING DOWN SURFACES LEFT FROM ROUGH GRADING OPERATIONS. PRIOR TO PLACEMENT OF BASE MATERIAL ROADWAY AND PARKING SUBGRADES SHALL BE PROOFROLLED WITH A LOADED DUMP TRUCK TO CHECK FOR SOFT AREAS. UPON DISCOVERY OF A SOFT AREA THE SOILS ENGINEER SHALL DIRECT THE CONTRACTOR AS TO REMEDIAL MEASURES.

PLACEMENT OF BASE STONE IN PARKING AREA:

6" MIN. OF NO. 21A CRUSHED STONE BASE SHALL BE PLACED AND IMMEDIATELY COMPACTED TO A 100% DENSITY, MODIFIED PROCTOR, OR TO ANOTHER MEASURE OF COMPACTION RECOGNIZED BY THE SOILS ENGINEER.



SWALE TYPICAL SECTION



Revisions By	Date
1-CITY CMMTS	10/31/13
2-CITY CMMTS	12/9/13



INTEGRITY
ENGINEERING

463 White Oak Drive
Blue Ridge, VA 24064
Ph: (540) 537-2390
Email: integrityengpc@

GRADING & EROSION CONTROL

BAKER AVE. PROPERTY REDEVELOPMENT

TISA LEASING
ROANOKE, VA

Scale: 1"=30'
Date: 9/3/13
Design By: SCG
CAD By: SCG
Checked By:
Project No.: 13021

Sheet No.

C4

APPROVED
MAR 05 2014