

DOMESTIC COLD WATER SERVICE (BELOW GRADE):

- PIPING: TYPE "K" SOFT COPPER ASTM B42
- FITTINGS: CAST BRONZE, ASME B.16.26
- JOINTS: ALLOY Sn95, ASTM B32

- SANITARY/VENT PIPING BELOW AND ABOVE FLOOR**
- PIPING: PVC DWV, SOLID WALL, SCHEDULE 40, ALLOWED IN RETURN AIR PLENUMS, REFER TO I
 - FITTINGS: PVC SOCKET, ASTM D2564
 - JOINTS: SOLVENT-CEMENTING, ASTM D2564

- PIPING: CAST IRON PIPE: CISPI 301, HUBLESS, SERVICE WEIGHT
- FITTINGS: CAST IRON
- JOINTS: CISPI 310, NEOPRENE GASKETS AND HEAVY DUTY STAINLESS STEEL CLAMP-AND-SHIELD ASSEMBLIES

- 1/2" HW & HWR PIPE - 1" FIBERGLASS INSULATION
- 3/4" HW & HWR PIPE - 1" FIBERGLASS INSULATION
- 1", 2" HW PIPES - 1-1/2" FIBERGLASS INSULATION
- 2" HW PIPE - 1-1/2" FIBERGLASS INSULATION
- 1/2"-2" CW PIPES - 1" FIBERGLASS INSULATION
- PVC JACKETING SHALL BE PROVIDED ON ALL PIPING & VALVE BODIES IN THE MECHANICAL ROOM

- PVC JACKETING SHALL BE PROVIDED ON ALL FREEZER/ANTE ROOM CONDENSATE DRAIN PIPING EXPOSED IN RECEIVING AREA. COORDINATE WITH FREEZER VENDOR

- PIPING: 1/2" TYPE "K" SOFT COPPER WITHOUT JOINTS
- INSULATION: 1/2" FLEXIBLE ELASTOMERIC

- * IF DOMESTIC WATER STATIC PRESSURE FOR THE SPACE IS BELOW 65 PSI, AN ALTERNATE BOOSTER PUMP SYSTEM BID IS REQUIRED.
- * THE CONTRACTOR IS RESPONSIBLE TO OBTAIN CURRENT FLOW TEST.
- * PROVIDE THE SINGLE VFD COMMERCIAL BOOSTER END PUMP, TFC MOTOR, 480/60/3, CONTROL PANEL, HEADERS MOUNTED ON STEEL SKID BASE FOR INDOOR INSTALLATION
- * PROVIDE 1/2" SWEENEY, SYNCRONOL, QUANTUM LOW OR ACCEPTABLE EQUIVALENT BOOSTER PUMP SYSTEM SHALL BE USED, NSF CERTIFIED, AND COMPLETELY FACTORY TESTED.
- * PROVIDE HYDROCUMULATOR TANK AND APPURTENANCES FOR COMPLETE BOOSTER PUMP SYSTEM INSTALLATION PER MANUFACTURER'S REQUIREMENTS.
- * PROVIDED BY-PASS WITH SHUT-OFF VALVE (NORMALLY CLOSED).
- * BIOFIRE CENTER DOMESTIC WATER SYSTEM FLOW IS 65 GPM @ 65 PSI PRESSURE.
- * TEST PRESSURE 300 PSI, 15 MIN. HOLDING PRESSURE.
- * COORDINATE THE LOCATION OF BOOSTER PUMP SYSTEM WITH BIOFIRE CM.
- * THE PUMP SHALL BE INSTALLED ON FLOOR/CONCRETE PAD.
- * COORDINATE ELECTRICAL REQUIREMENTS WITH ELECTRICAL CONTRACTOR.

EWC-1: LOW FOUNTAIN TO BE MOUNTED ON THE RIGHT WITH BOTTLE FILLER ABOVE IT. THE HIGH FOUNTAIN SHALL BE MOUNTED ON THE LEFT WITH CANE APRON.

ALL VENT PIPING IN RETURN AIR PLENUM SHALL BE CAST IRON. REFER TO MECHANICAL PLANS FOR RETURN AIR PLENUM AND COORDINATE WITH HVAC CONTRACTOR.

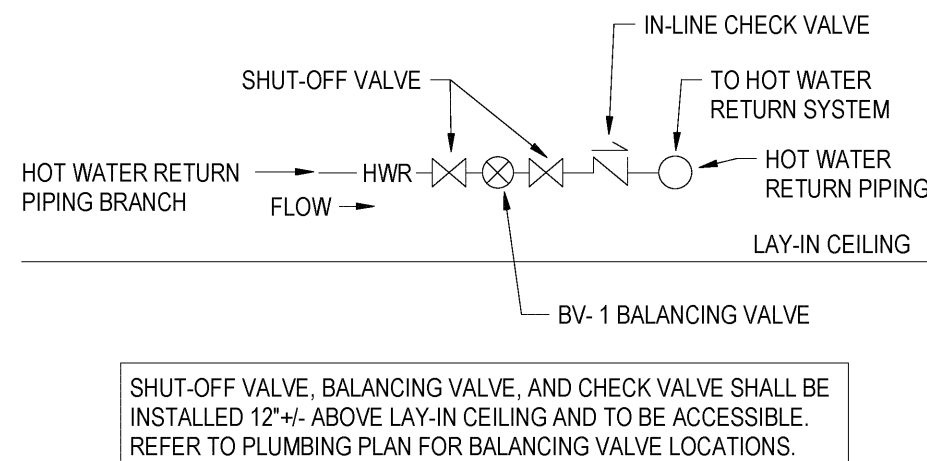
ALL SHUT-OFF VALVES SHALL BE LEAD-FREE BRONZE BALL VALVE TYPE.

REFER TO 1/P203 "DOMESTIC WATER RISER DIAGRAM" FOR ADDITIONAL PIPING SIZES

ALL UNUSED PLUMBING PIPING SHALL BE REMOVED

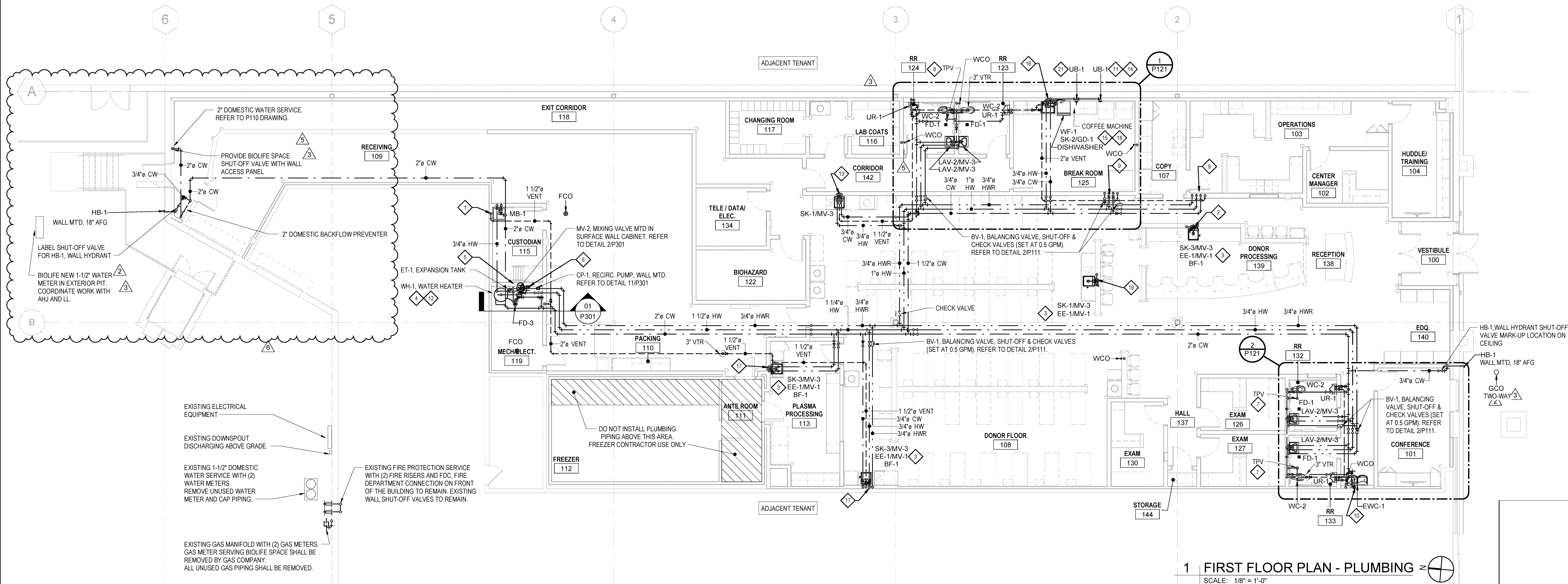
ALL PLUMBING VENTS THRU ROOF SHALL BE LOCATED A MINIMUM OF 20'-0" FROM ANY OUTDOOR AIR INTAKES. REFER TO M121 FOR VTR LOCATION.

EXISTING BUILDING STORM SYSTEM WITH GUTTERS AND DOWNSPOUTS DISCHARGING ABOVE GRADE TO REMAIN.

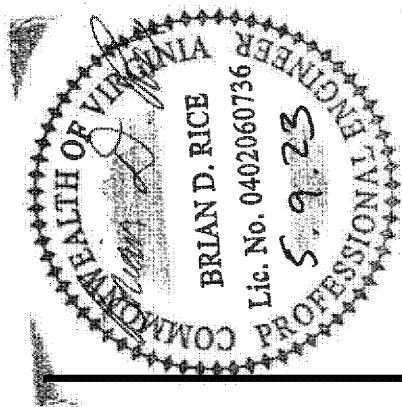


NOT TO SCALE

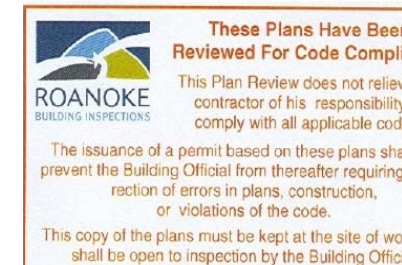
PLUMBING SCHEDULED NOTES	
Coded Note Number	Description
1	3/4" CW & HW DN IN WALL TO CONNECT TO MB-1. PROVIDE WILKINS #40XL IN LINE CHECK VALVE ON CW & HW SUPPLY LINES. 3" SAN DN, 2" VENT UP IN WALL.
2	3/4" CW, HW, & HWR UP IN CABINET. EXTEND 1/2" CW & HW TO CONNECT TO SK-3MV-3 AND EE-1MV-1. PROVIDE BF-1 AT THE LEFT SIDE OF SINK FAUCET AS SHOWN. REFER TO DETAIL 08P301 "ISLAND SINK VENT".
3	INSTALL EMERGENCY EYEWASH WITH MIXING VALVE ADJACENT TO RIGHT SIDE OF SINK PER MANUFACTURER'S REQUIREMENTS. COORDINATE WORK WITH GC AND CASEWORK.
4	INSTALL ELECTRIC WATER HEATER ON 4"(H) CONCRETE PAD. INSTALL WATER PIPING CONNECTIONS PER MANUFACTURER'S REQUIREMENTS. REFER TO DETAIL 01P301. INSTALL ET-1 EXPANSION TANK PER MANUFACTURER'S REQUIREMENTS.
5	4" SAN DN, 2" VENT UP IN WALL.
6	TPV, MIN. 24" AFF. EXTEND 1/2" CW FROM TPV TO CONNECT TO FLOOR DRAIN. REFER TO DETAIL 12P301.
7	EXTEND 1/2" CW FROM TRAP PRIMER VALVE TO CONNECT TO FLOOR DRAIN.
8	EXTEND 1/2" CW FROM TRAP PRIMER VALVE TO CONNECT TO EACH FLOOR DRAIN.
9	3/4" CW, 3/4" HW & 3/4" HWR DN IN WALL BELOW FLOOR. 2" VENT UP IN WALL. REFER TO P110 FOR CONTINUATION. UNDER SLAB 3/4" DOMESTIC CW, HW AND HWR PIPING SHALL BE SOFT COPPER TUBE, ASTM B-88, TYPE K, WROUGHT COPPER. SOLDER-JOINT FITTINGS AND BRAZED JOINTS. ALL PIPING SHALL BE INSULATED WITH 3/4" ELASTOMERIC INSULATION. PROVIDE PVC PIPE (ASTM 1785, SCH 40) SLEEVES IN CONCRETE SLAB. SEAL SPACE OUTSIDE OF SLEEVES IN CONCRETE SLAB WITH GROUT.
10	3/4" CW DN IN WALL TO CONNECT TO EW-1. 2" DRAIN DN, 1-1/2" VENT UP.
11	EXTEND 1/2" CW TO CONNECT TO UB-1, UTILITY BOX.
12	COORDINATE ELECTRICAL REQUIREMENTS WITH ELECTRICAL CONTRACTOR.
13	3/4" CW, HW, & HWR UP IN WALL. EXTEND 1/2" CW & HW TO CONNECT TO SK-1MV-3.
14	EXTEND COPPER TUBING AND CONNECT TO (1) REFRIGERATOR ICE MAKER PER MANUFACTURER'S REQUIREMENTS.
15	EXTEND FILTERED WATER COPPER TUBING TO CONNECT TO UB-1 UTILITY BOX AND COFFEE MACHINE. PROVIDE SHUT-OFF VALVE, WATTS SD-3 BACKFLOW PREVENTER, WATER HAMMER ARRESTER. EXTEND BACKFLOW PREVENTER VENT PIPING TO SPILL OVER HUB DRAIN AT SK-2.
16	3/4" CW & HW IN WALL. 1/2" CW & HW TO CONNECT TO SK-2GD-1. 1/2" CW CONNECT TO WF-1 FILTER SYSTEM AND FILTERED WATER TO WF-1 FAUCET AT LEFT SIDE OF SINK FAUCET AND COFFEE MACHINE. 2" SAN DN, 1-1/2" VENT UP. ROUTE 3/4" HW BELOW COUNTER TO CONNECT TO DISHWASHER. CONNECT DISHWASHER DRAIN TO GARBAGE DISPOSAL DISHWASHER CONNECTION. REFER TO DETAIL 09P301.
17	3/4" CW & HW DN IN WALL. EXTEND 1/2" CW & HW TO CONNECT TO SK-3MV-3 AND EE-1MV-1. PROVIDE BF-1 BOTTLE FILLER AT THE LEFT SIDE OF SINK FAUCET AS SHOWN AND CONNECT 1/2" CW, 2" SAN DN, 1-1/2" VENT UP.
18	EXTEND COFFEE MACHINE BACKFLOW PREVENTER VENT PIPING TO SPILL OVER "P" TRAP HUB DRAIN AT SK-2.
19	3/4" CW, HW, & HWR UP IN CABINET. EXTEND 1/2" CW AND HW TO CONNECT TO SK-1MV-3 AND EE-1MV-1. REFER TO DETAIL 08P301 "ISLAND SINK VENT".
20	NOT USED.
21	INSTALL UB-1 UTILITY (ICE MAKER) BOX WITH WATER HAMMER ARRESTER ABOVE COUNTER BEHIND COFFEE MACHINE. EXTEND FILTERED WATER COPPER TUBING TO CONNECT TO COFFEE MACHINE.



SCALE: 1/8" = 1'-0"




Design and construction documents as instruments of service are given in confidence and remain the property of Onyx Creative. The use of this design and these construction documents for purposes other than the specific project named herein is strictly prohibited without expressed written consent of Onyx Creative.



Approved by Tommy Hahn
05/19/2023 7:03:57 AM

BioLife® PLASMA SERVICES



BIOLIFE
4731 VALLEY V

Project No.: 20474

Drawn By: IEU

Date	Issue
2022-11-18	FOR PERMIT

2023-01-20	2	ADDENDUM
2023-02-24	3	ITC 2
2023-04-03	5	ITC 4
2023-04-28	6	ITC 5

P111

FIRST FLOOR PLAN -
PLUMBING