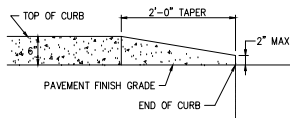
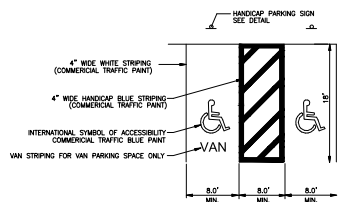


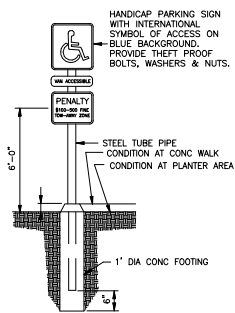
**CURB SHELF DETAIL**  
N.T.S.



**CURB TAPER DETAIL - SECTION**  
NO SCALE



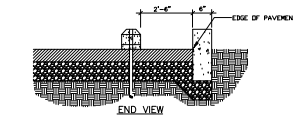
**H.C. STALL STRIPING DETAIL**  
N.T.S.



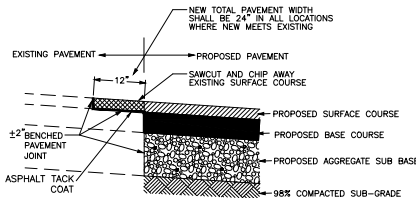
**HANDICAP SIGNPOST DETAIL**  
NO SCALE



**HANDICAP SIGN DETAIL**  
NO SCALE

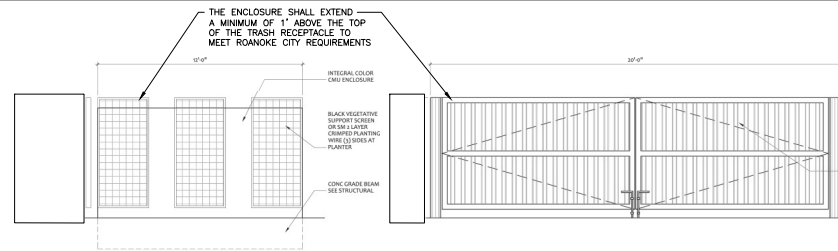


**CONCRETE BUMPER BLOCK DETAIL**  
NO SCALE



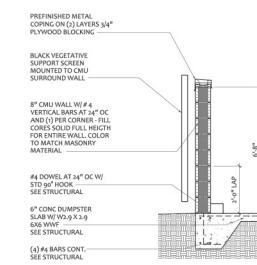
**PAVEMENT JOINT DETAIL**  
N.T.S.

1. ALL LETTERS ARE 1" SERIES "C" PER 2003 MUTCD.
2. TOP PORTION OF SIGN SHALL HAVE A REFLECTORIZED (ENGINEERING GRADE) BLUE BACKGROUND WITH WHITE REFLECTORIZED LEGEND AND BORDER.
3. BOTTOM PORTION OF SIGN SHALL HAVE A REFLECTORIZED (ENGINEERING GRADE) WHITE BACKGROUND WITH BLACK OPAQUE LEGEND AND BORDER.
4. FINE NOTIFICATION SIGN SHALL HAVE A REFLECTORIZED (ENGINEERING GRADE) WHITE BACKGROUND WITH BLACK OPAQUE LEGEND AND BORDER.
5. ONE (1) SIGN REQUIRED FOR EACH ACCESSIBLE PARKING SPACE.
6. INSTALLED HEIGHT OF SIGN SHALL BE IN ACCORDANCE WITH SECTION 24-23 OF THE MANUAL ON UNIFORM TRAFFIC CONTROL DEVICES (MUTCD).
7. SIGN MAY BE MOUNTED ON BUILDING/WALL, AT PROPER HEIGHT, IF ALIGNED WITHIN 12" OF CENTER OF PARKING SPACE.

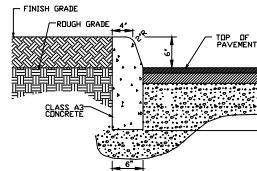


**ENLARGED TRASH ENCLOSURE SIDE ELEVATION**  
1/8"=1'-0"

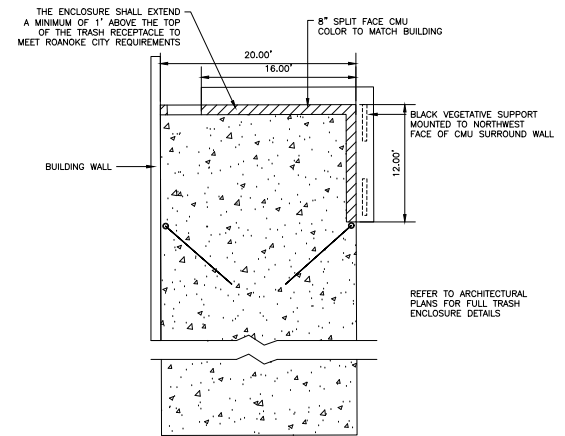
**ENLARGED TRASH ENCLOSURE FRONT ELEVATION**  
1/8"=1'-0"



**WALL SECTION**  
1/8"=1'-0"

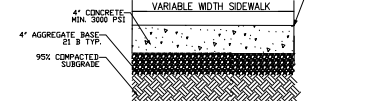


**CG-2 DETAIL TYP.**  
N.T.S.  
(SUBGRADE- MIN 98% COMPACTION)



**TRASH ENCLOSURE**  
N.T.S.

City of Roanoke  
Planning, Building, & Development  
COMPREHENSIVE DEVELOPMENT PLAN  
**APPROVED**  
by Ken Richardson  
03/24/2020



**SIDEWALK DETAIL**  
N.T.S.

**PARKING STALL STRIPING DETAIL**  
N.T.S.