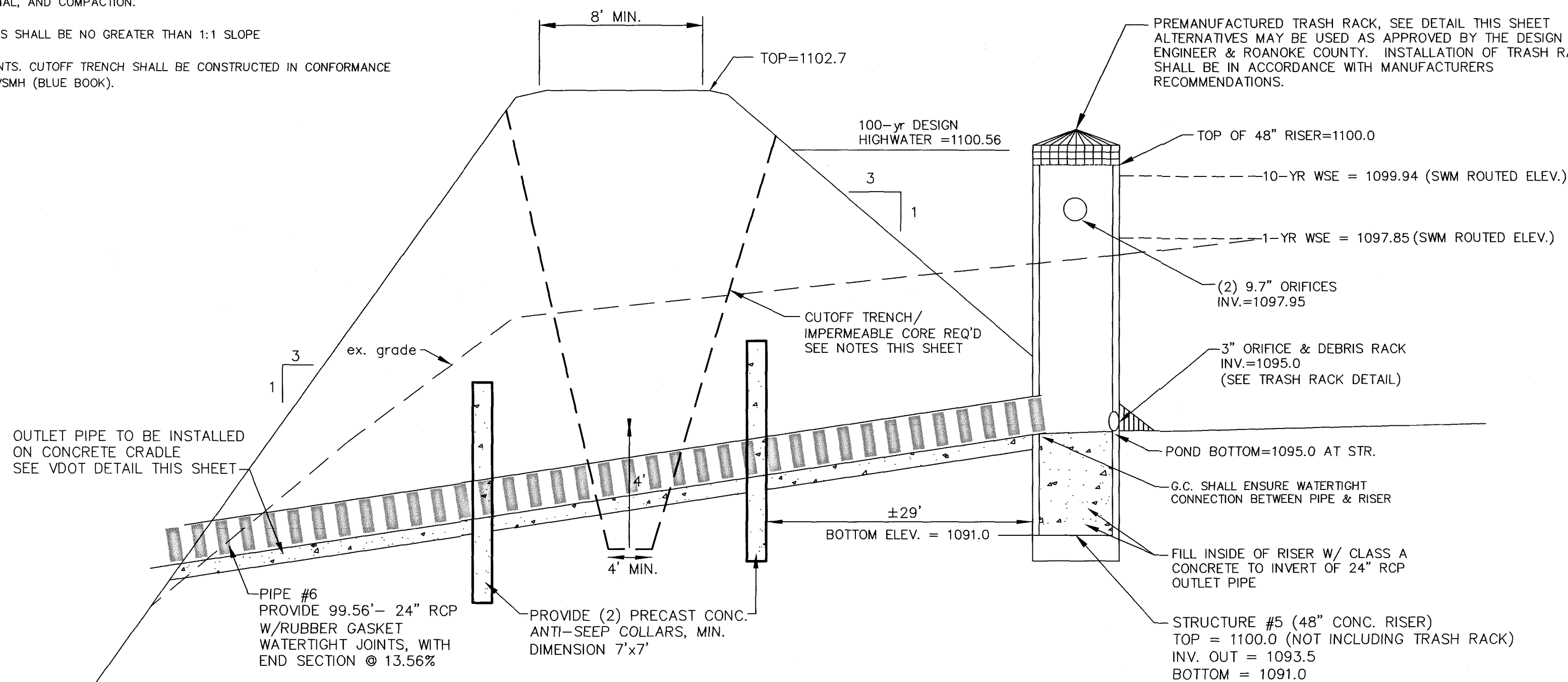


CUTOFF TRENCH NOTE:

SEE EARTH FILL SECTION OF SITE PREPARATION NOTES FOR CUTOFF TRENCH, FILL MATERIAL, AND COMPACTION.

SIDE SLOPES SHALL BE NO GREATER THAN 1:1 SLOPE

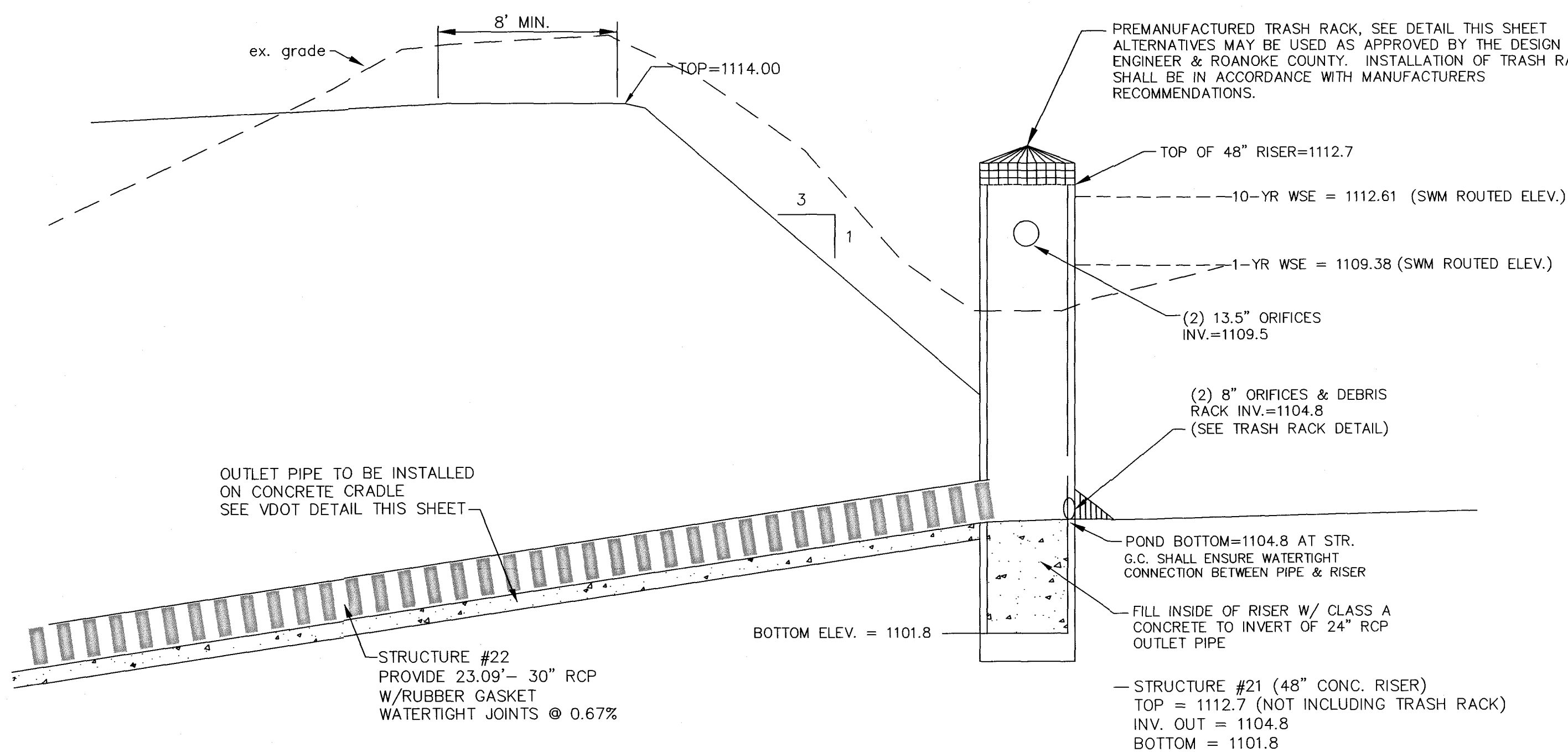
REQUIREMENTS. CUTOFF TRENCH SHALL BE CONSTRUCTED IN CONFORMANCE WITH THE VSMH (BLUE BOOK).



EMBANKMENT SECTION
NO SCALE

S.W.M. BASIN 'A' DETAIL

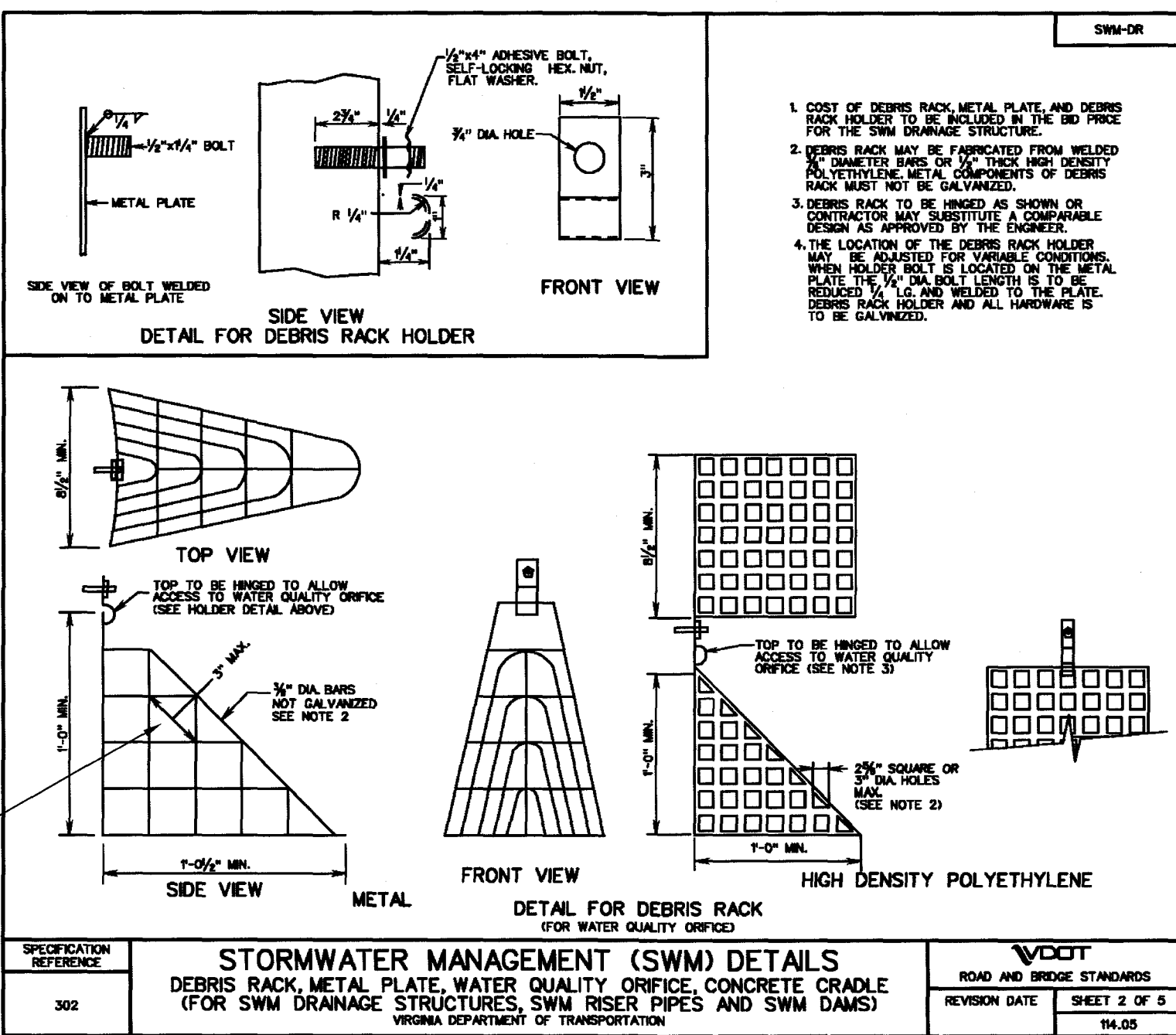
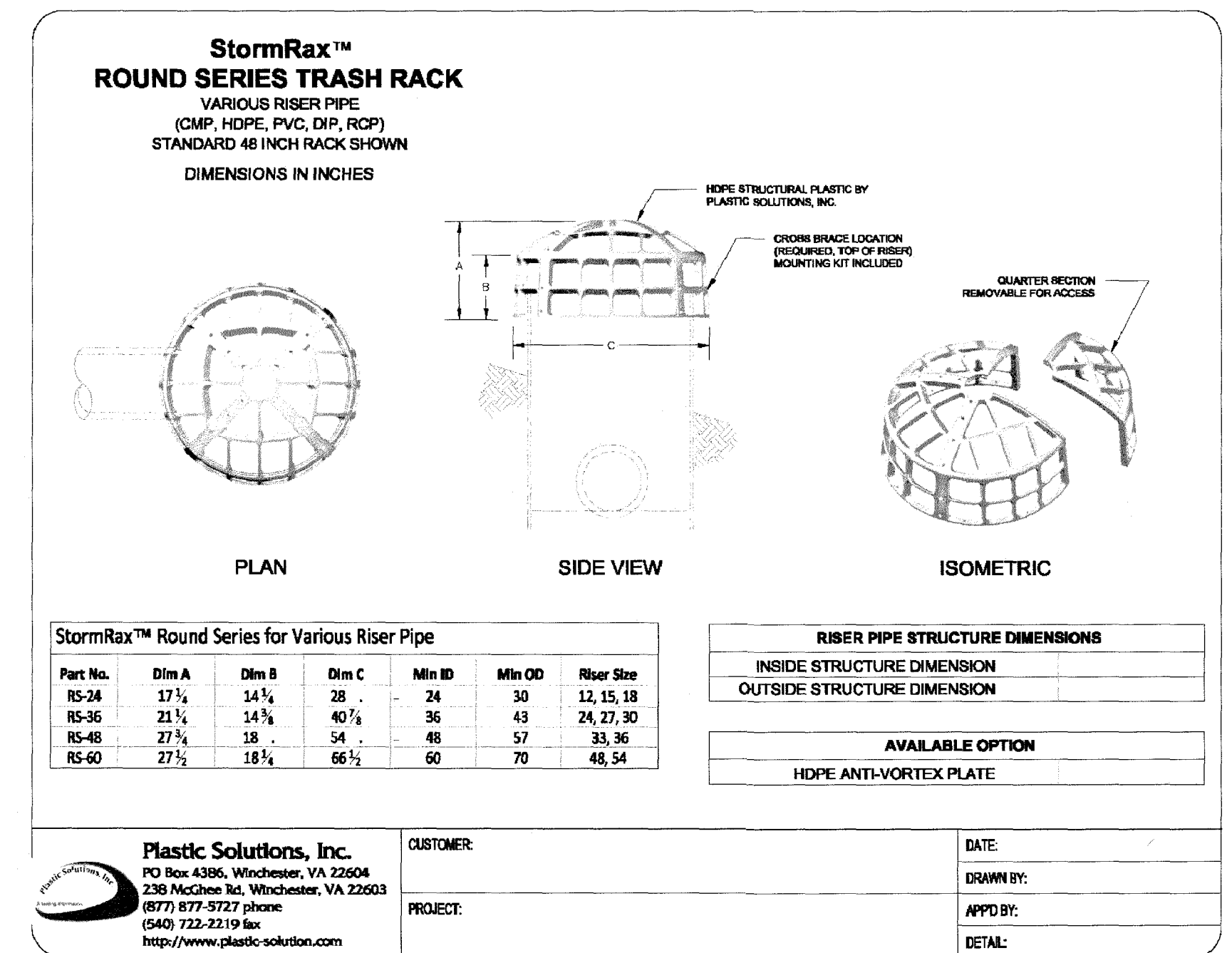
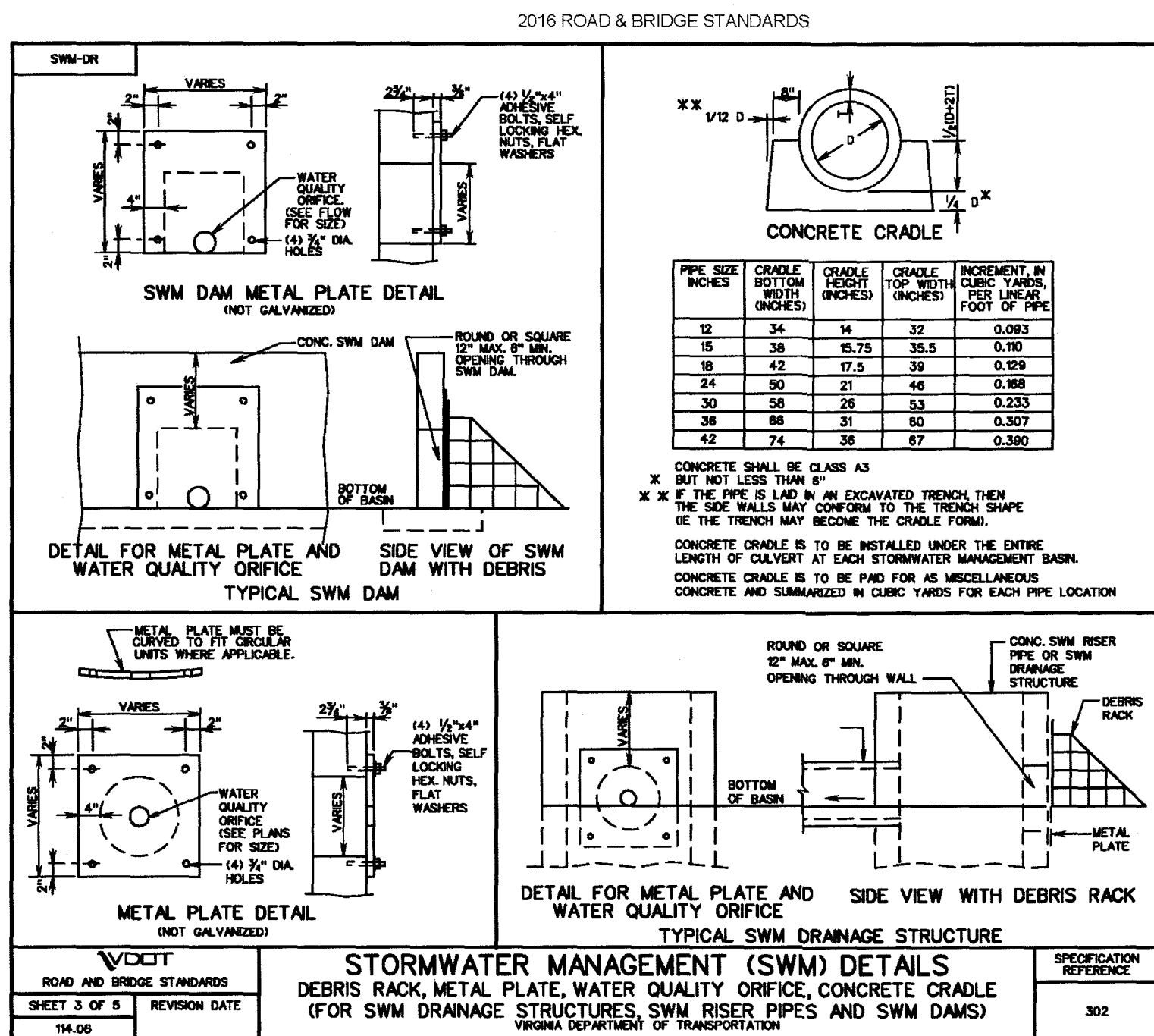
NOTE: ALL BARREL CONNECTIONS WITH RISER TO BE WATERTIGHT.



EMBANKMENT SECTION
NO SCALE

S.W.M. BASIN 'B' DETAIL

NOTE: ALL BARREL CONNECTIONS WITH RISER TO BE WATERTIGHT.



*NOTE: TRASH RACK FOR SWM POND 'A' SHALL BE MODIFIED TO PROVIDE MAX. 2" OPENINGS



REFLECTING TOMORROW

www.balzer.cc

Roanoke
New River Valley
Richmond
Staunton
Harrisonburg

RESIDENTIAL LAND DEVELOPMENT ENGINEERING
SITE DEVELOPMENT ENGINEERING
LAND USE PLANNING & ZONING
LANDSCAPE ARCHITECTURE
ARCHITECTURE
STRUCTURAL ENGINEERING
TRANSPORTATION ENGINEERING
ENVIRONMENTAL & SOIL SCIENCE
WETLAND DELINEATIONS & STREAM EVALUATIONS

Balzer and Associates, Inc.

1208 Corporate Circle
Roanoke, VA 24018
540-772-9580
FAX 540-772-8050

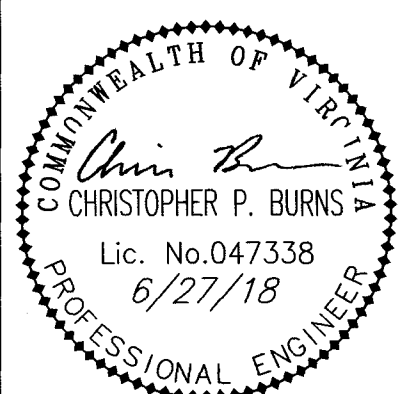
City of Roanoke

Planning, Building, & Development

COMPREHENSIVE DEVELOPMENT PLAN

APPROVED

by Adrian Gilbert 07/16/2018



COMMUNICATIONS CENTER
0 BLUE HILLS CIRCLE NE
SWM NOTES AND DETAILS
CITY OF ROANOKE, VIRGINIA

DRAWN BY EJP
DESIGNED BY CPB
CHECKED BY CPB
DATE 5/30/2018
SCALE N/A
REVISIONS:
6/27/2018

SHEET NO.

C14

JOB NO. 03170040.00