

NOTE:

MELROSE AVENUE CANNOT BE CLOSED DURING CONSTRUCTION. THE UTILITY CROSSING WILL HAVE TO OCCOUR IN ONE HALF OF THE ROADWAY AT A TIME. WORK IN MELROSE AVENUE WILL BE LIMITED TO THE WORK HOURS BETWEEN 9:00 AM AND 4:00 PM. ALL WORK ZONE SIGNS AND TRAFFIC CONTROL DEVICES REQUIRED BY THE MUTCD MUST BE SUPPLIED BY THE CONTRACTOR

TYPICAL TRAFFIC CONTROL  
OUTSIDE LANE CLOSURE OPERATION ON FOUR-LANE ROADWAY  
(FIGURE TTC-12.0)

NOTES

Standard:

1. On roadways having a median wider than 8', left and right sign assemblies shall be required.

Guidance:

2. Sign spacing distance should be 1000'-1500' for limited access highway, and on all other roadways 500'-800' where the posted speed limit is greater than 45 mph, and 350'-500' where the posted speed limit is 45 mph or less.
3. Care should be exercised when establishing the limits of the work zone to insure maximum possible sight distance in advance of the transition, based on the posted speed limit and at least equal to or greater than the values in Appendix A, Page A-8. For limited access highways a minimum of 1000' is desired.
4. All vehicles, equipment, workers and their activities should be restricted to one side of the pavement.

Standard:

5. Taper Length and Channelizing Device Spacing shall be:

Speed Limit M.P.H.	Taper Length Lane Width In Feet			Channelizing Device Spacing	
	10	11	12	Speed (mph)	Location
25	105	115	125	0-35	36+
30	150	165	180	20'	40'
35	205	225	245	40'	80'
40	270	295	320		
45	450	495	540		
50	500	550	600		
55	550	605	660		
60	600	660	720		
65	650	715	780		

For all limited access highways, the taper length shall be a minimum of 1000'.

6. The buffer space length shall be as shown in Table 6H-3.0 on page 6H-5 for the posted speed limit.
7. A shadow vehicle with either a type B or C arrow panel operation in the caution mode, or at least one rotating amber light or high intensity amber strobe light shall be parked 50'-100' in advance of the first work crew. When the posted speed limit is 45 mph or greater, a truck mounted attenuator shall be used.
8. When a side road intersects the highway within the temporary traffic control zone, additional traffic control devices shall be placed as needed.

TYPICAL TRAFFIC CONTROL  
INSIDE LANE CLOSURE OPERATION ON FOUR-LANE ROADWAY  
(FIGURE TTC-13.0)

NOTES

Standard:

1. On roadways having a median wider than 8', left and right sign assemblies shall be required.

Guidance:

2. Sign spacing distance should be 1000'-1500' for limited access highway, and on all other roadways 500'-800' where the posted speed limit is greater than 45 mph, and 350'-500' where the posted speed limit is 45 mph or less.
3. Care should be exercised when establishing the limits of the work zone to insure maximum possible sight distance in advance of the transition, based on the posted speed limit and at least equal to or greater than the values in Appendix A, Page A-8. For limited access highways a minimum of 1000' is desired.
4. All vehicles, equipment, workers and their activities should be restricted to one side of the pavement.

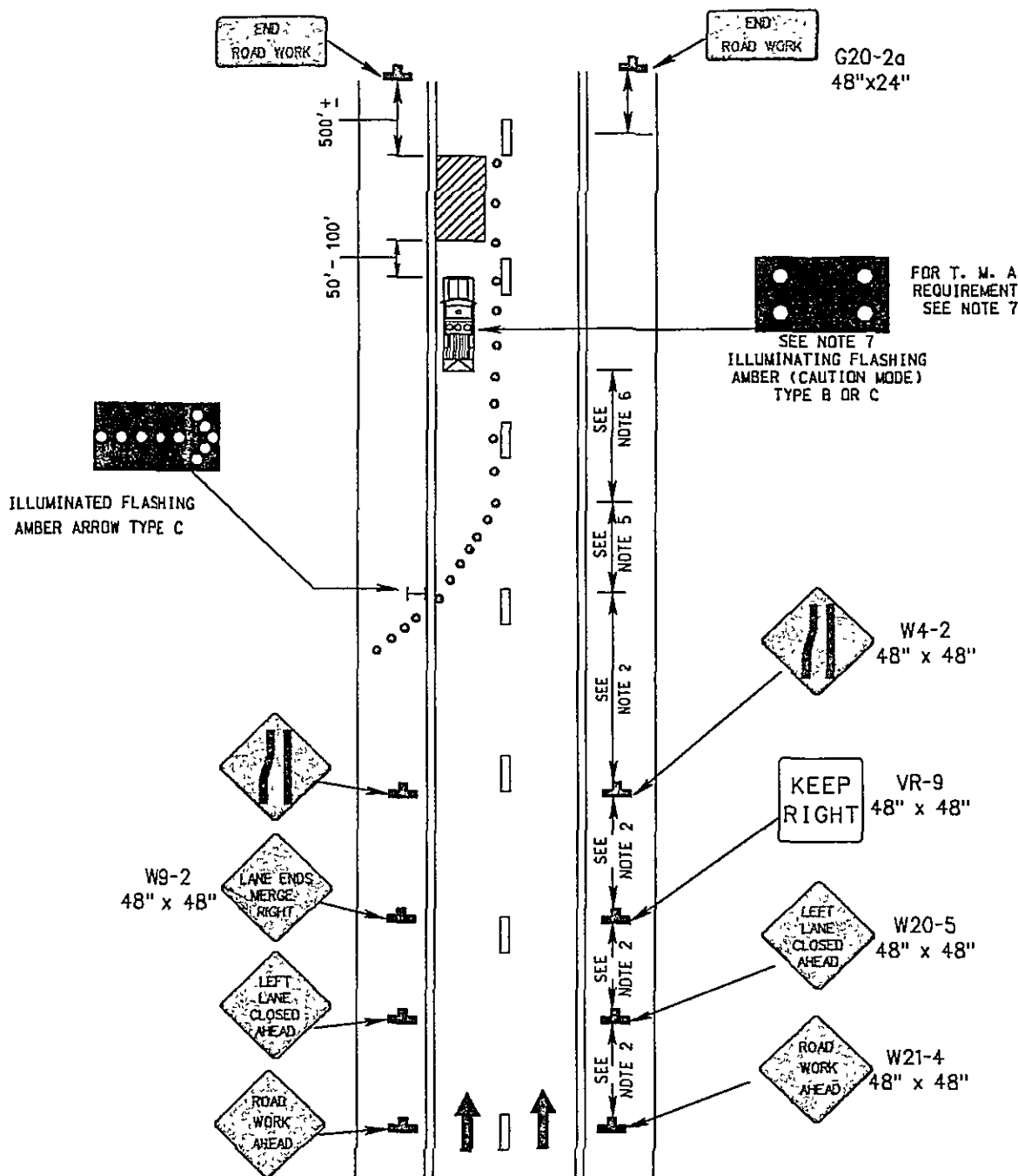
Standard:

5. Taper Length and Channelizing Device Spacing shall be:

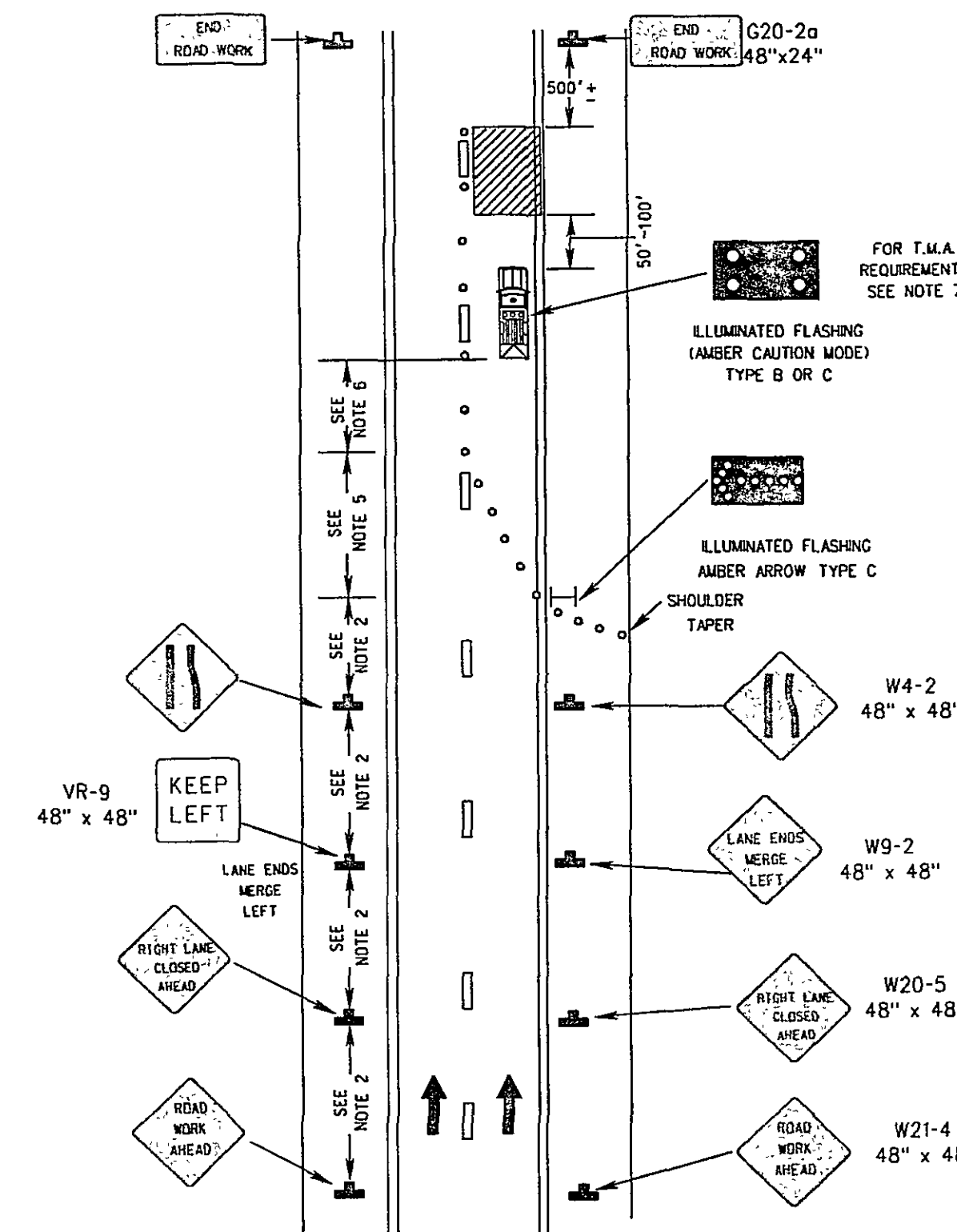
Speed Limit M.P.H.	Taper Length Lane Width In Feet			Channelizing Device Spacing	
	10	11	12	Speed (mph)	Location
25	105	115	125	0-35	36+
30	150	165	180	20'	40'
35	205	225	245	40'	80'
40	270	295	320		
45	450	495	540		
50	500	550	600		
55	550	605	660		
60	600	660	720		
65	650	715	780		

For all limited access highways, the taper length shall be a minimum of 1000'.

6. The buffer space length shall be as shown in Table 6H-3.0 on page 6H-5 for the posted speed limit.
7. A shadow vehicle with either a type B or C arrow panel operation in the caution mode, or at least one rotating amber light or high intensity amber strobe light shall be parked 50'-100' in advance of the first work crew. When the posted speed limit is 45 mph or greater, a truck mounted attenuator shall be used.
8. When a side road intersects the highway within the temporary traffic control zone, additional traffic control devices shall be placed as needed.



INSIDE LANE CLOSURE OPERATION ON FOUR-LANE ROADWAY  
FIGURE TTC-13.0



OUTSIDE LANE CLOSURE OPERATION ON FOUR-LANE ROADWAY  
FIGURE TTC-12.0