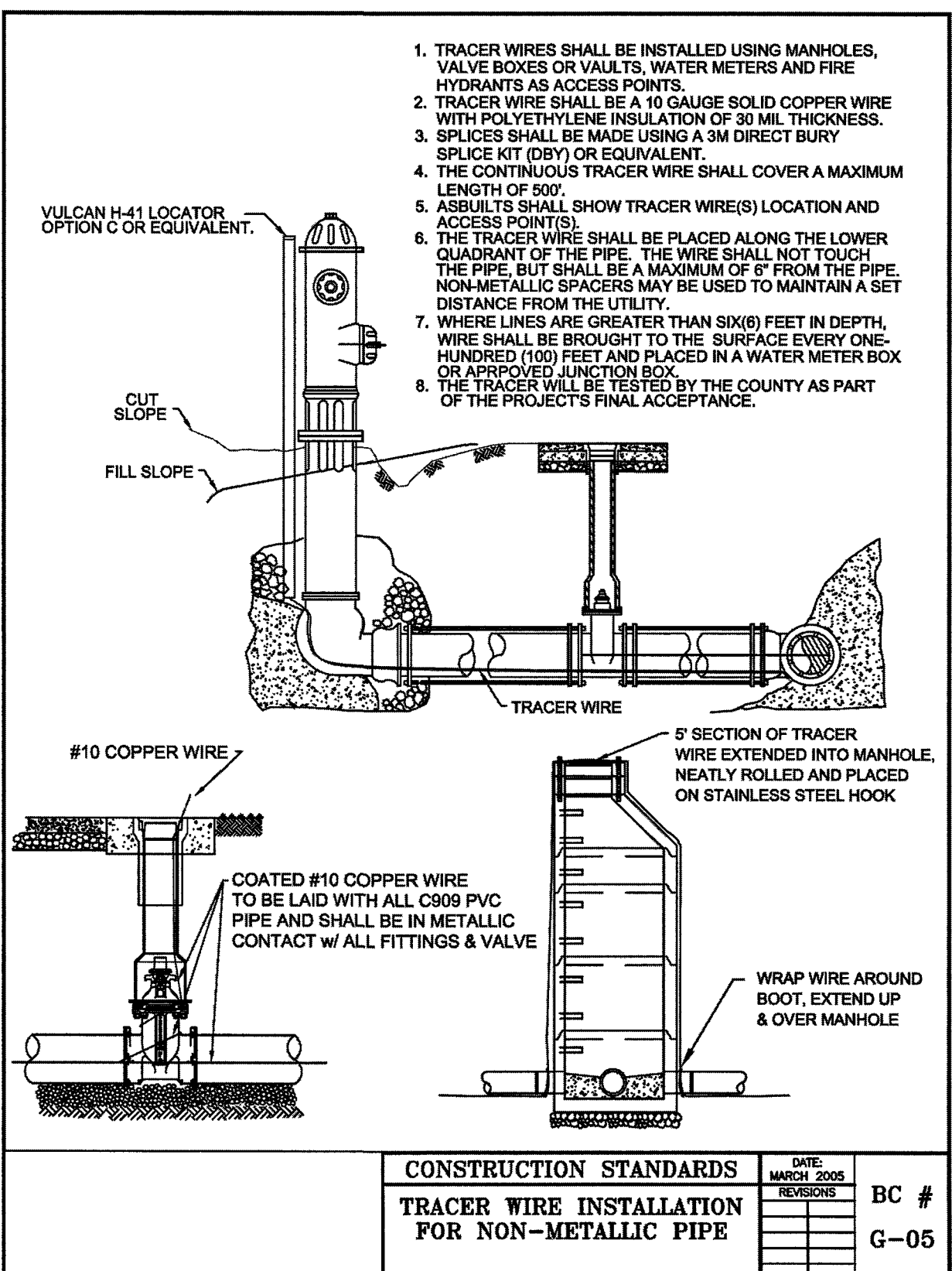
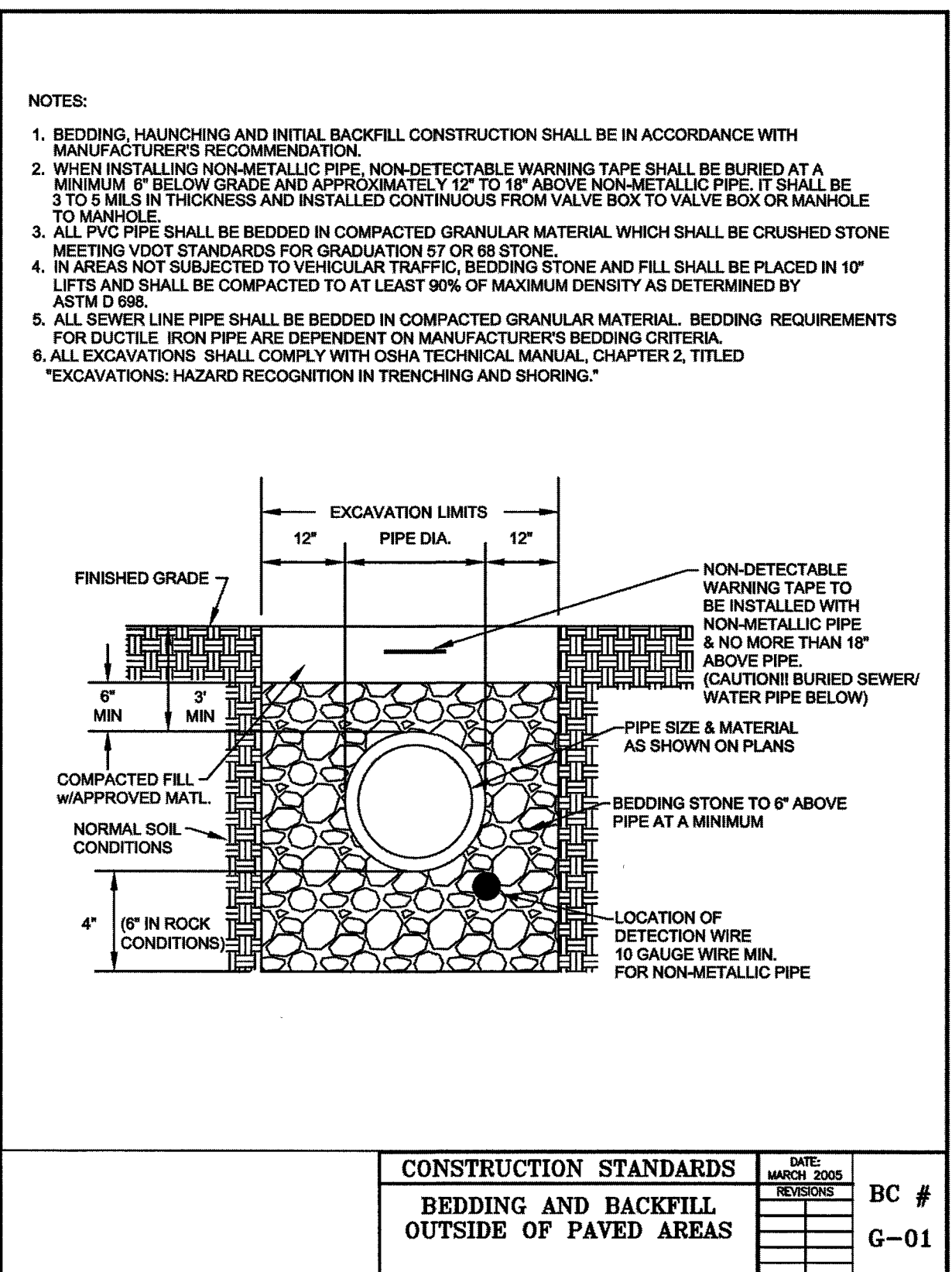
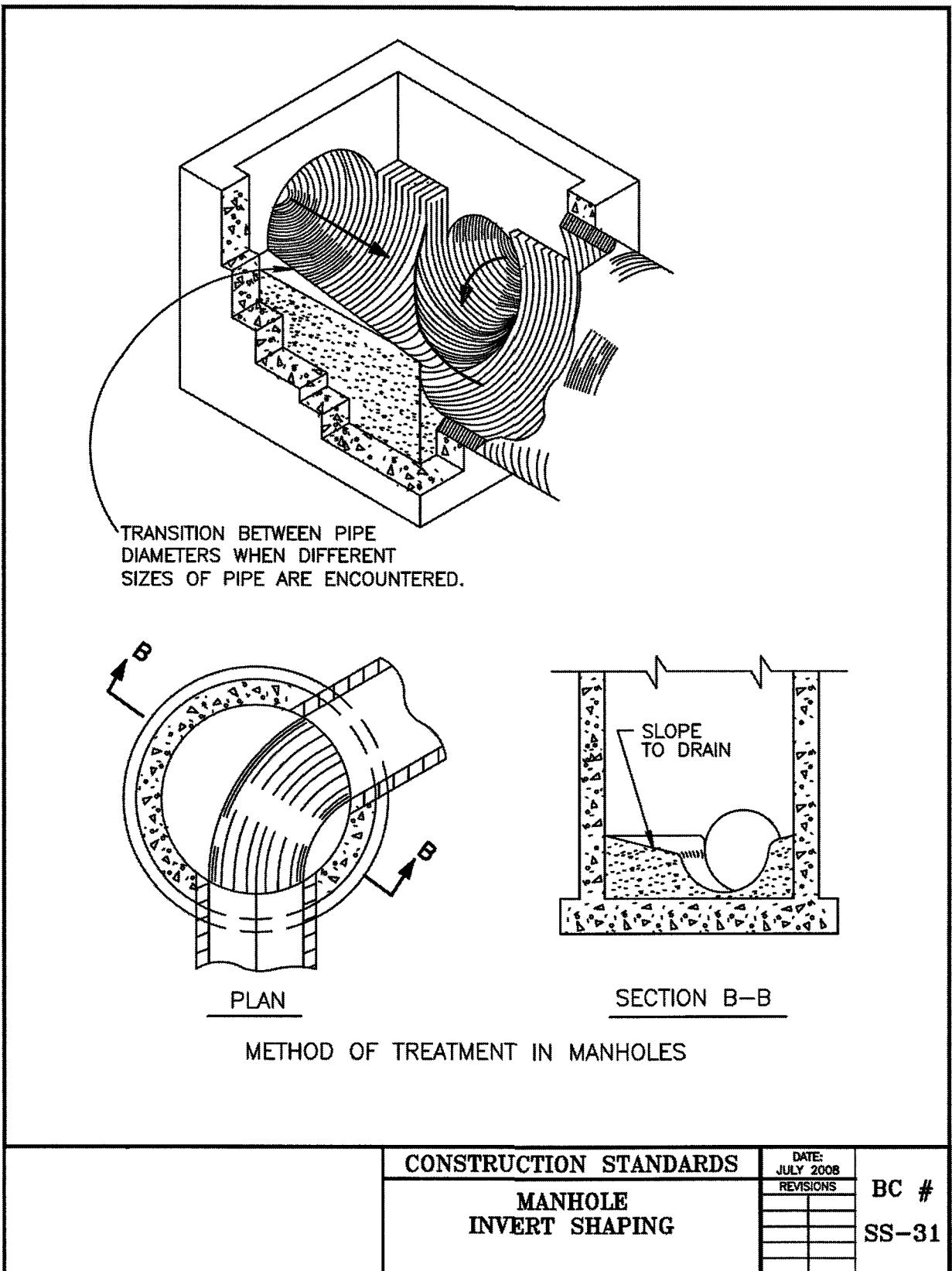
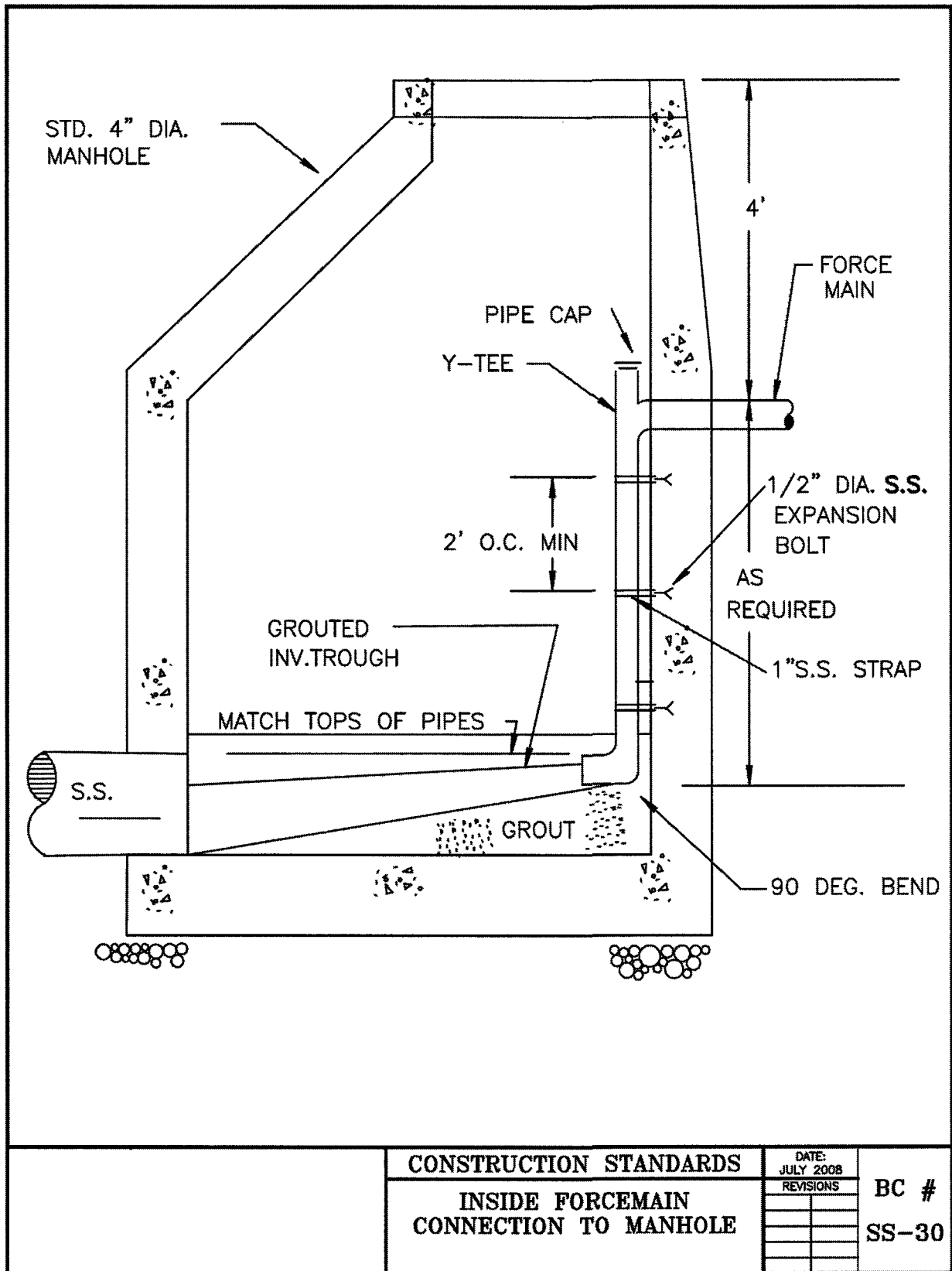
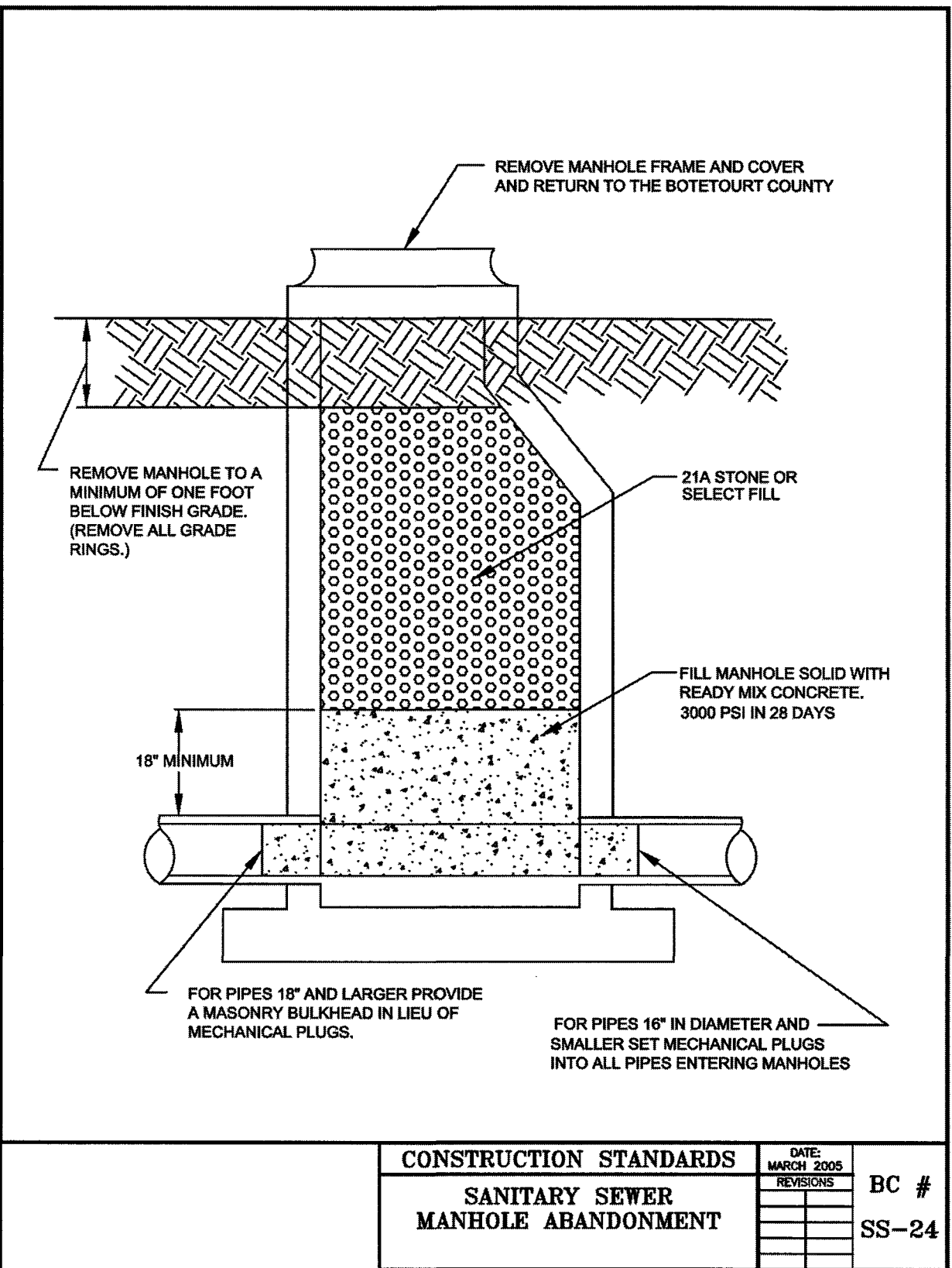
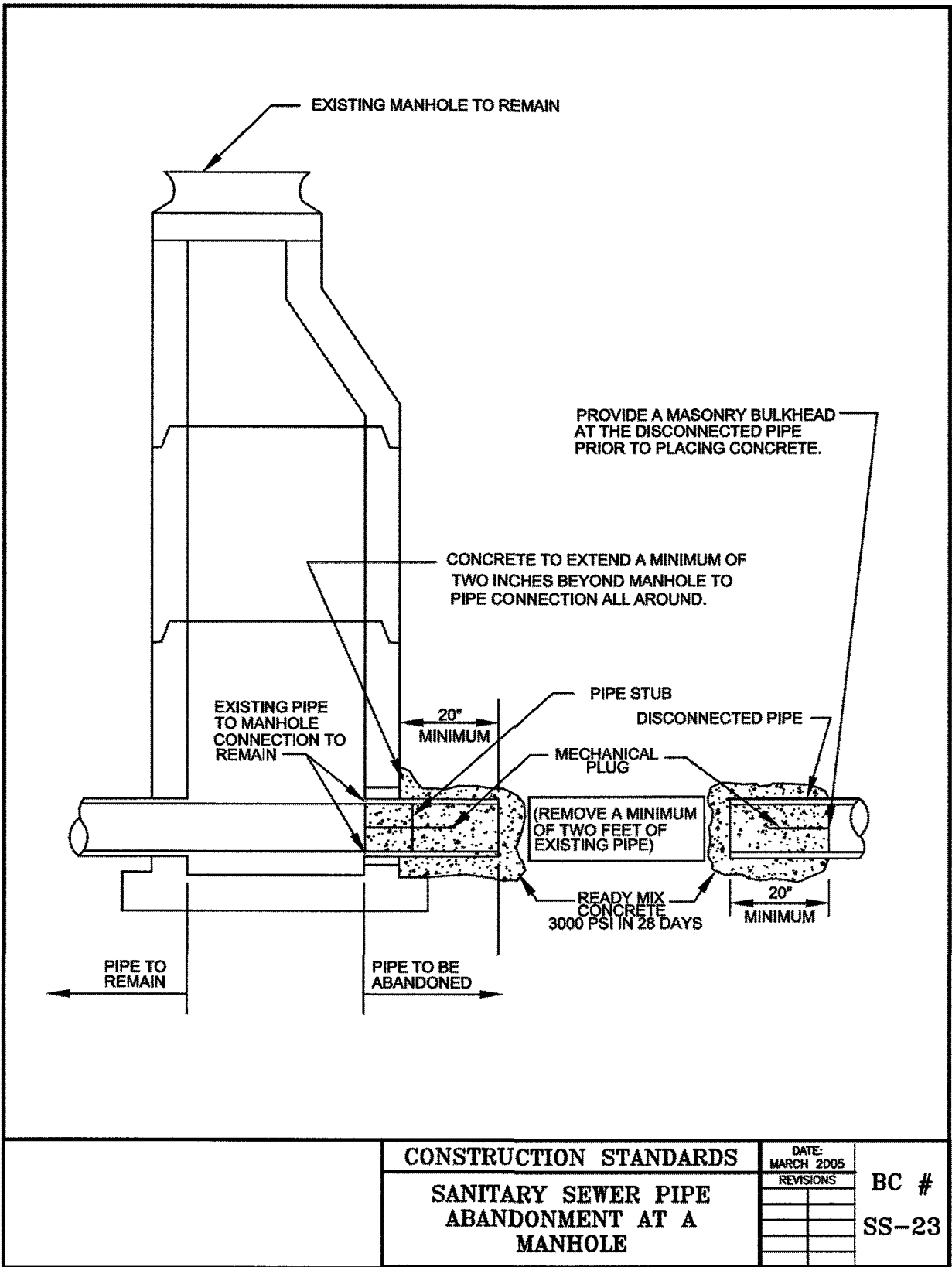
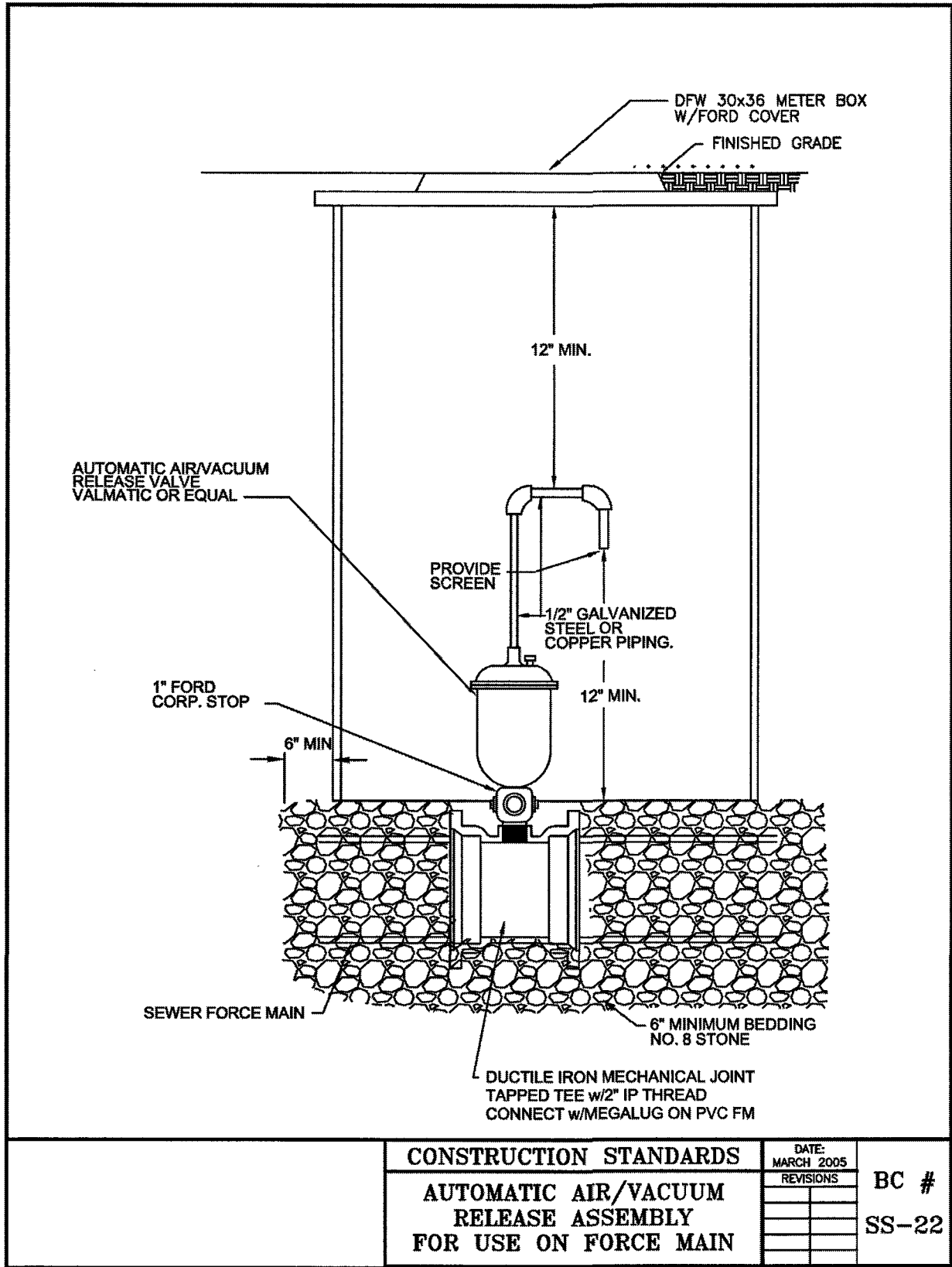


REVISED	STATE	FEDERAL AID	ROUTE	STATE	SHEET NO.
		PROJECT		PROJECT	
	VA.		779	0779-011-247 C-501	8(7)

DESIGN FEATURES RELATING TO CONSTRUCTION OR TO REGULATION AND CONTROL OF TRAFFIC MAY BE SUBJECT TO CHANGE AS DEEMED NECESSARY BY THE DEPARTMENT



Bradley C. Craig
2012.08.06 14:38:35 -04'00'
MATTERN & CRAIG, INC
Roanoke, Virginia
(UTILITY ENGINEER)



PLAN NO.	PROJECT	FILE NO.	SHEET NO.
	0779-011-247		8(7)

SURVEYED BY: TIM VERMALEN (804) 786-5483
SUPERVISED BY: BRADLEY C. CRAIG, MATERN & CRAIG INC. (540) 345-9342
CADD OPERATOR: MATERN & CRAIG INC. (540) 345-9342
REVISED BY: