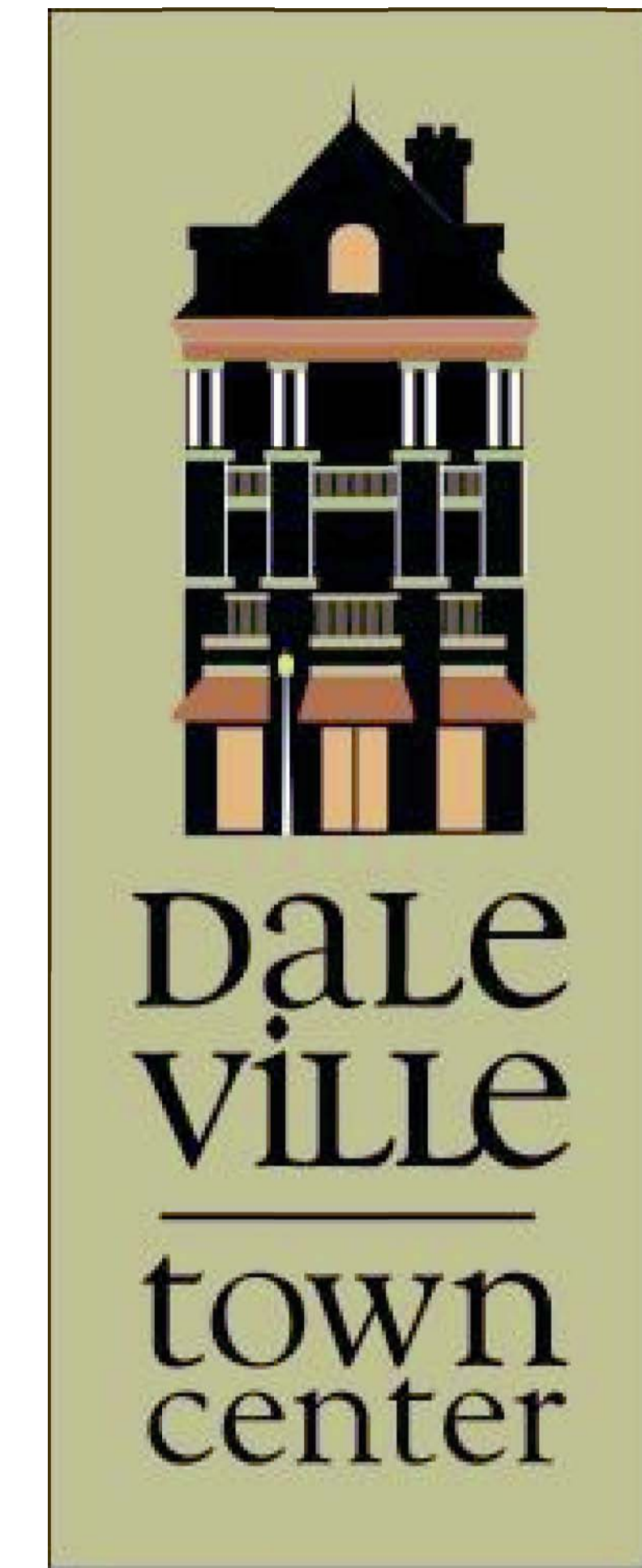


DALEVILLE TOWN CENTER PHASE 1

BOTETOURT COUNTY, VIRGINIA
MAY 8, 2008

- △ 3/10/08 - VARIOUS COUNTY REVIEW COMMENTS
- △ 5/8/08 - BOTETOURT, VDH, & DEQ COMMENTS
- △ 7/8/08 - VARIOUS DEVELOPMENT REVISIONS
- △ 9/29/08 - VARIOUS DEVELOPMENT REVISIONS

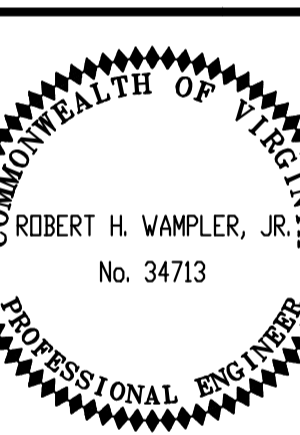


REVISIONS	DATE	BY	DESCRIPTION
VARIOUS DESIGN DEVELOPMENT REVISIONS			
VARIOUS DEVELOPMENT REVISIONS			
BOTETOURT, VDH, DEQ COMMENTS			
VARIOUS COUNTY REVIEW COMMENTS			

REVISIONS	DATE	BY
△	9/29/08	MSMJ
△	7/8/08	RHW
△	5/8/08	RHW
△	3/10/08	MSMJ

DATE	12/05/07	CHECKED	RHW
PROJECT	03083	DESIGNED	RHW
DRAWN	MSMJ		

ENGINEERING CONCEPTS, INC.
"Creating Success"
2018 Riverside Street, PO Box 619
Fincastle, Virginia 24090
540.473.1253 fax 540.473.1254

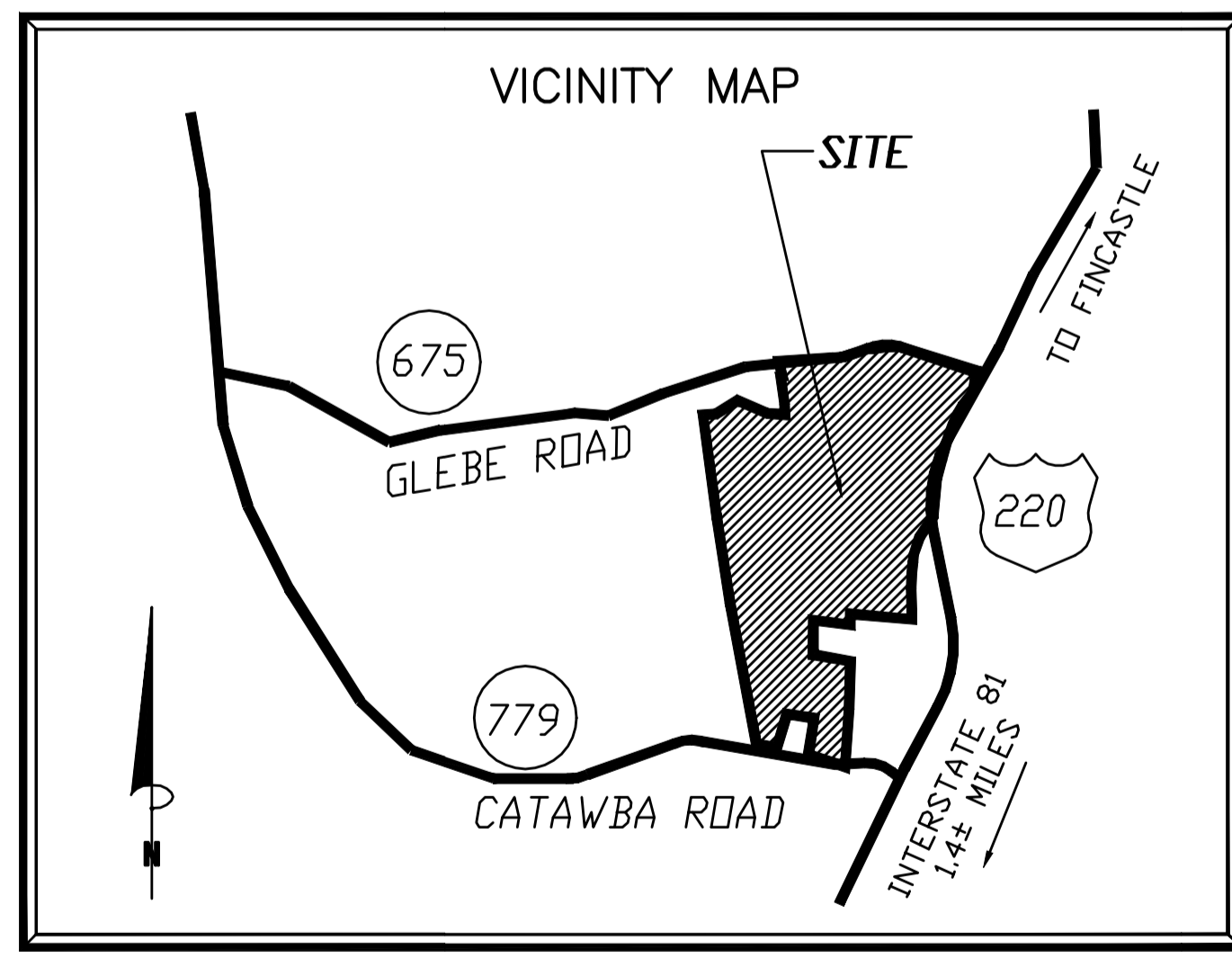
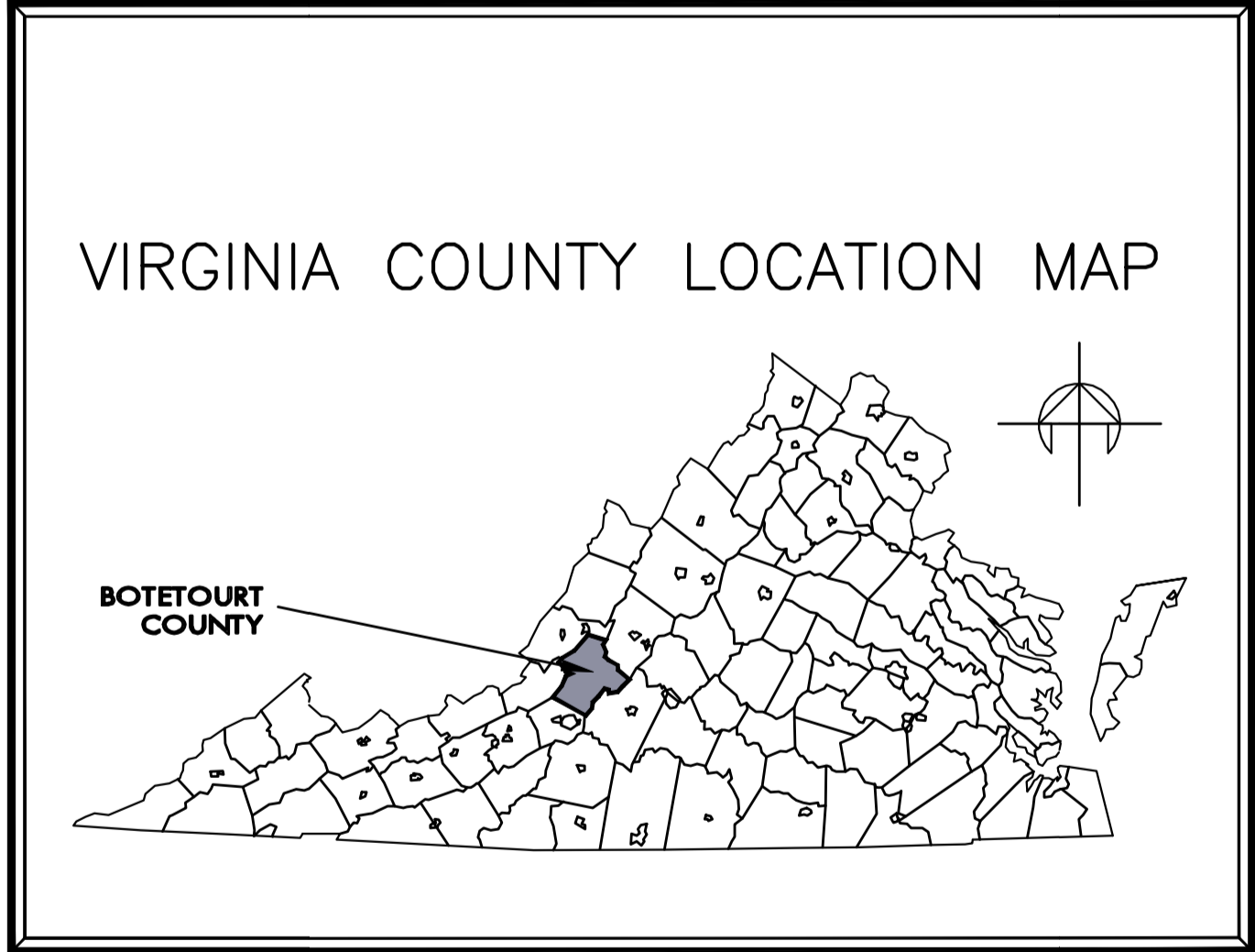


AS-BUILT NOTES:
1. THE AS-BUILTS SHOWN IN THIS DRAWING SET ARE ONLY FOR THE CONSTRUCTION OF PHASE 1 WATER AND SANITARY SEWER. THOSE SHEETS NOT ASSOCIATED WITH THIS WORK ARE NOT INCLUDED.
2. AS-BUILT LOCATIONS ARE SHOWN BASED ON FIELD SURVEY OF VISIBLE UTILITIES BY ENGINEERING CONCEPTS, INC. THROUGH APRIL 2009.
3. ECI RECEIVED RED LINE MARKUPS FOR SHEETS C24, C27, C28, C32, AND C33 FROM EC PACE, INC. ON MAY 18, 2009. AS-BUILT DRAWINGS REFLECT THESE RED LINE MARKUPS.

AS-BUILT PLAN SET DATED 5-22-09

1	COVER SHEET
2	MISCELLANEOUS NOTES
3	MISCELLANEOUS NOTES AND DETAILS
4	OVERALL PLAN
5	COMPREHENSIVE DEVELOPMENT PLAN
6	COMPREHENSIVE DEVELOPMENT PLAN
7	COMPREHENSIVE DEVELOPMENT PLAN
8	COMPREHENSIVE DEVELOPMENT PLAN
9	COMPREHENSIVE DEVELOPMENT PLAN
10	COMPREHENSIVE DEVELOPMENT PLAN
11	COMPREHENSIVE DEVELOPMENT PLAN
12	COMPREHENSIVE DEVELOPMENT PLAN
13	SEDIMENT BASINS AND DETAILS
14	SITE DIMENSIONAL PLAN - COMMERCIAL AREA
15	SITE DIMENSIONAL PLAN - COMMERCIAL AREA
16	SITE DIMENSIONAL PLAN - NORTH 220
17	SITE DIMENSIONAL PLAN - SOUTH 220
18	STORM DRAIN PROFILES
19	STORM DRAIN PROFILES
20	STORM DRAIN PROFILES
21	STORM DRAIN PROFILES
22	STORM DRAIN PROFILES
23	STORM DRAIN PROFILES & DETAILS
24	SHENANDOAH DR. & SEDGEWOOD AVE. PLAN / PROFILE
25	SHENANDOAH DR. & SEDGEWOOD AVE. PLAN / PROFILE
26	TOWN BOULEVARD PLAN / PROFILE
27	CHARTER AVENUE PLAN / PROFILE
28	TOWN CENTER STREET PLAN / PROFILE
29	BROAD STREET PLAN / PROFILE
30	COLONY AVENUE PLAN / PROFILE
31	SOMERSET STREET PLAN / PROFILE
32	RIVER BIRCH AVENUE PLAN / PROFILE
33	SILK REED CIRCLE PLAN / PROFILE
34	BOXWOOD LANE PLAN / PROFILE
35	ROADWAY DETAILS
36	WATER DETAILS
37	SANITARY SEWER DETAILS
38	SANITARY SEWER PROFILES
39	SANITARY SEWER PROFILES
40	SANITARY SEWER PROFILES
41	EROSION AND SEDIMENT CONTROL DETAILS
42	SIGHT DISTANCE PLANS
	SUPPLEMENTAL SHEET

SHEET NOT INCLUDED IN PHASE 1 WATER/SANITARY SEWER AS-BUILT SET



ENGINEERING CONCEPTS, INC.
20 S. ROANOKE ST., PO BOX 619
FINCASTLE, VIRGINIA 24090
540.473.1253 FAX 540.473.1254

CONTACTS:
BOB FLYNN
FRALIN AND WALDRON, INC.
540-774-4415

ECI PROJECT: 03083
BOBBY WAMPLER, P.E.
ENGINEERING CONCEPTS, INC.
540-473-1253

OWNER: FRALIN AND WALDRON, INC.

AS-BUILT

PROJECT: FRALIN AND WALDRON
DALEVILLE TOWN CENTER
DRAWING COVER SHEET

SHEET
C-01