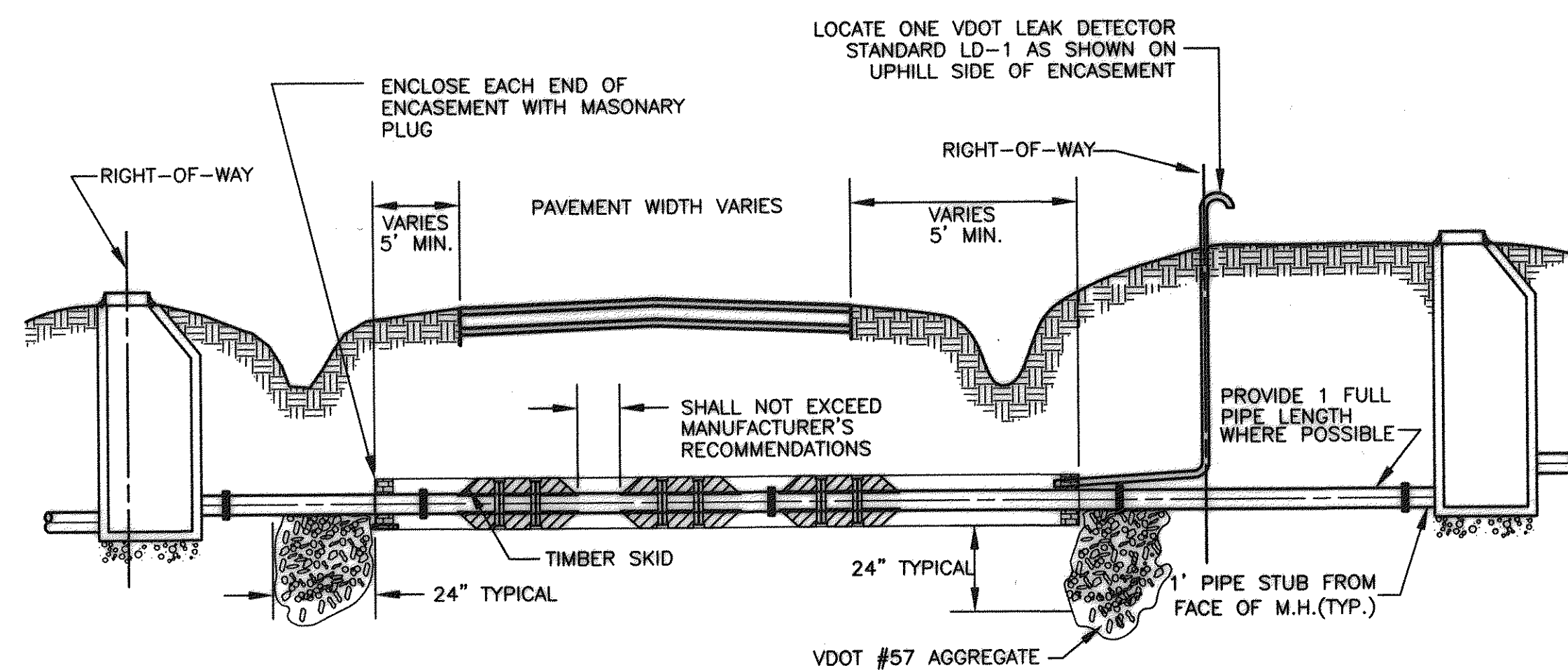


NOTES:

1. SLOPE ENCASEMENT TO MATCH SLOPE OF ENCASED SEWER AS SHOWN ON PLANS.
2. STEEL ENCASEMENT PIPE SHALL CONFORM TO THE REQUIREMENTS OF ASTM A139 FOR THE CLASS AND THICKNESS SPECIFIED AND SHALL HAVE BEVELED EDGES SUITABLE FOR FIELD WELDING. WALL THICKNESS OF PIPE SHALL BE 0.312" MINIMUM.
3. CARRIER PIPE SHALL BE FLANGED DUCTILE IRON.
4. CARRIER PIPE SHALL BE LINED WITH TAR PAPER AT MASONRY PLUG.
5. MASONRY PLUG SHALL BE OF WATERTIGHT CONSTRUCTION WITH A WEEP HOLE FOR DRAINAGE.
6. FOR JACK AND BORE INSTALLATIONS:
A. CONTRACTOR SHALL FIELD VERIFY LOCATION OF BORE PIT AND CONFIRM WITH ENGINEER BEFORE PROCEEDING WITH ENCASEMENT INSTALLATION.

ENCASED RAILROAD CROSSING - SEWER

NOT TO SCALE

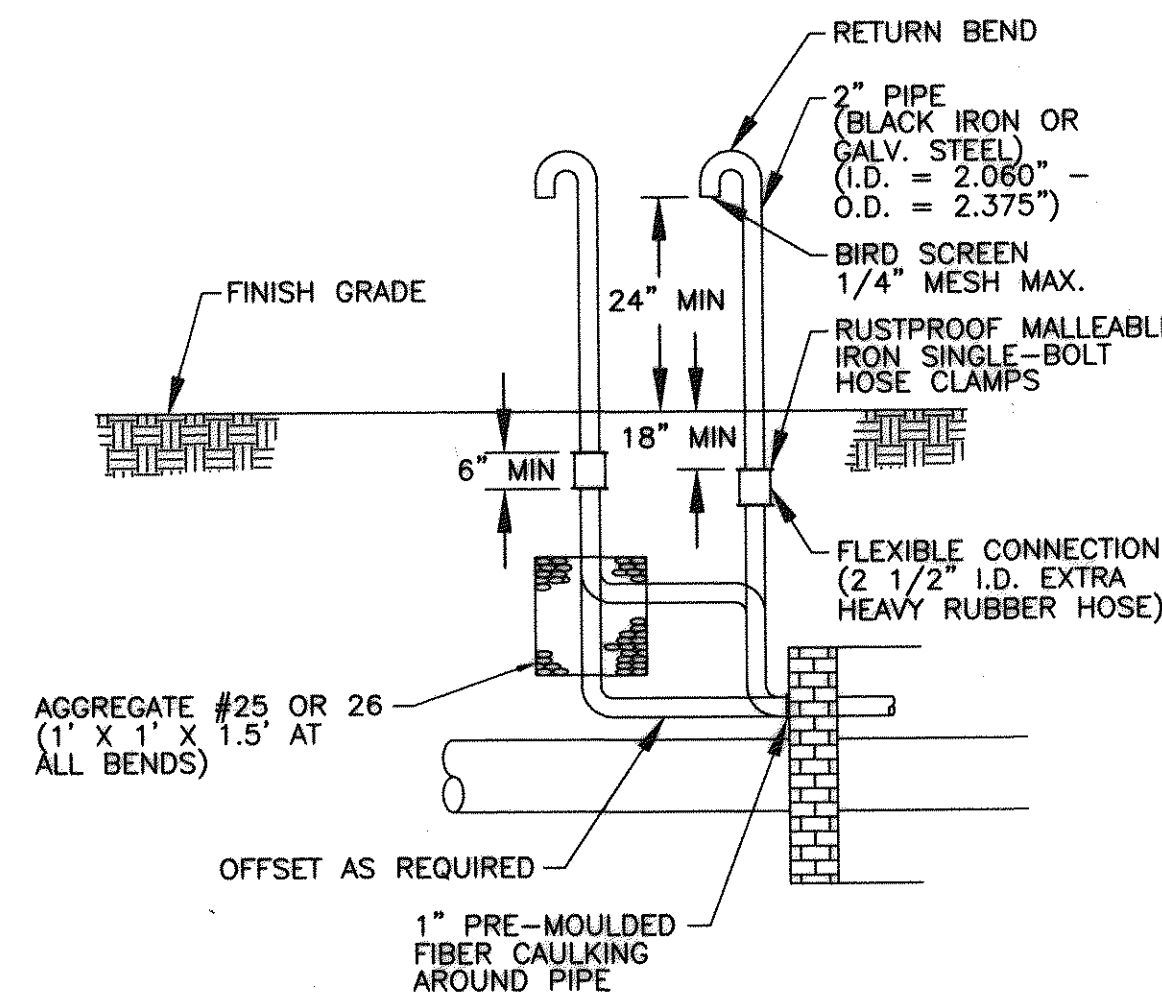


NOTES:

1. SLOPE ENCASEMENT TO MATCH SLOPE OF ENCASED SEWER AS SHOWN ON PLANS.
2. STEEL ENCASEMENT PIPE SHALL CONFORM TO THE REQUIREMENTS OF ASTM A139 FOR THE CLASS AND THICKNESS SPECIFIED AND SHALL HAVE BEVELED EDGES SUITABLE FOR FIELD WELDING. WALL THICKNESS OF PIPE SHALL BE 1/4" MINIMUM.
3. CARRIER PIPE SHALL BE FLANGED DUCTILE IRON.
4. CARRIER PIPE SHALL BE LINED WITH TAR PAPER AT MASONRY PLUG.
5. MASONRY PLUG SHALL BE OF WATERTIGHT CONNECTION WITH A WEEP HOLE FOR DRAINAGE.
6. FOR OPEN CUT INSTALLATIONS:
A. CONTRACTOR SHALL REPLACE CUT MATERIAL WITH APPROVED CRUSHED AGGREGATE AND SHALL ACHIEVE 95% COMPACTION PER VDOT REQUIREMENTS.
B. CONTRACTOR SHALL MATCH EXISTING PAVEMENT CROSS SECTION AND SHALL REPLACE PAVEMENT AND SURFACE TO ORIGINAL CONDITION OR BETTER.
7. FOR JACK AND BORE INSTALLATIONS:
A. CONTRACTOR SHALL FIELD VERIFY LOCATION OF BORE PIT AND CONFIRM WITH ENGINEER BEFORE PROCEEDING WITH ENCASEMENT INSTALLATION.

ENCASED ROAD CROSSING - SEWER

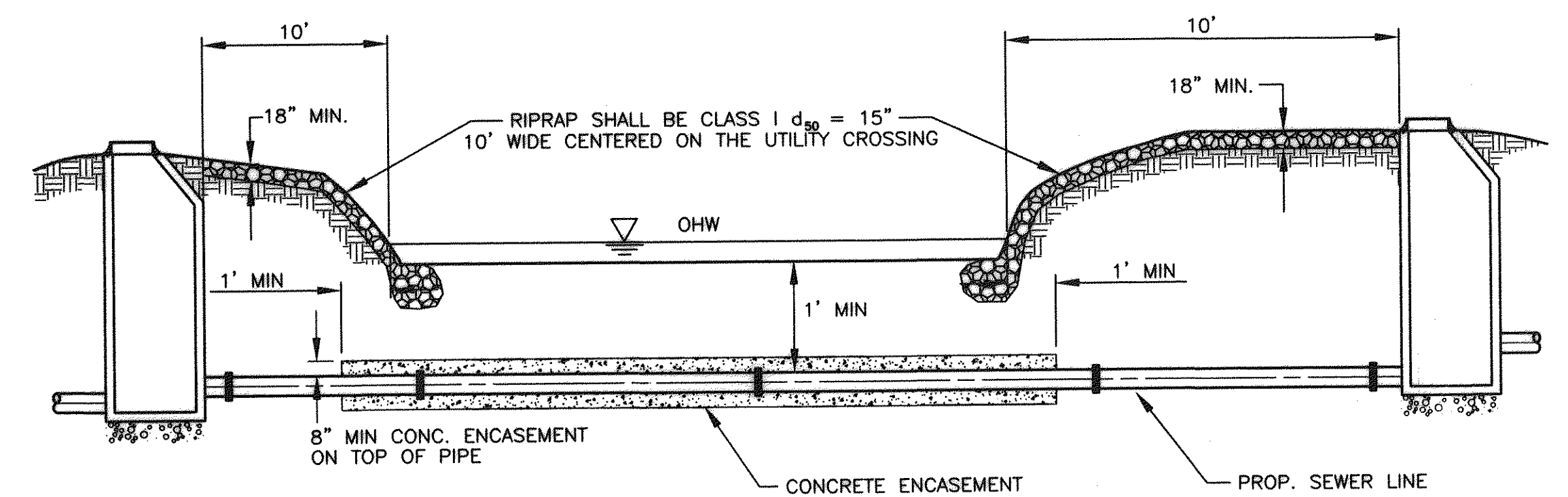
NOT TO SCALE



NOTES:

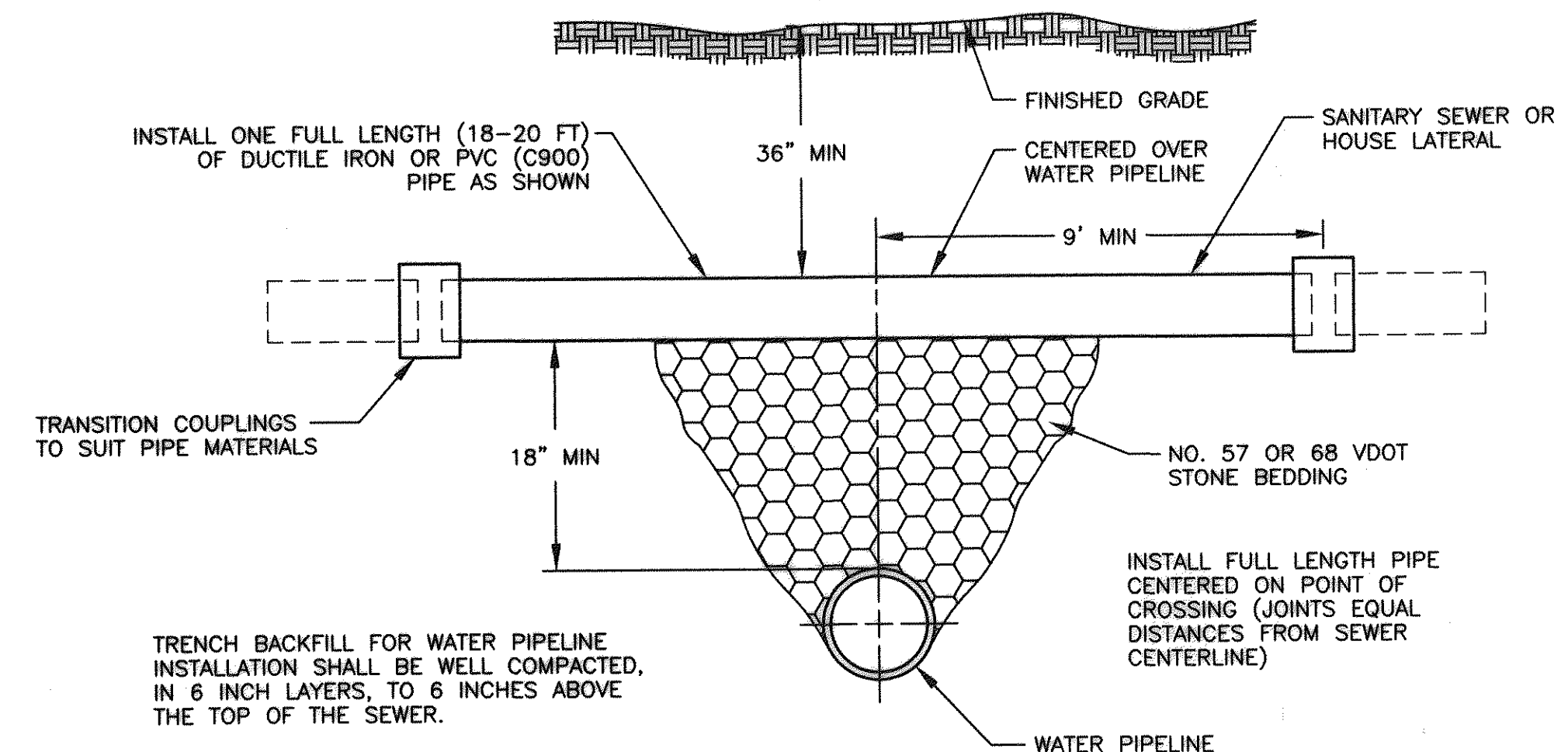
- WRAP CONNECTION IN POLYETHYLENE AND PLASTER WITH ROOFING CEMENT OR ASPHALTIC MATERIAL

STANDARD LEAK DETECTOR LD-1

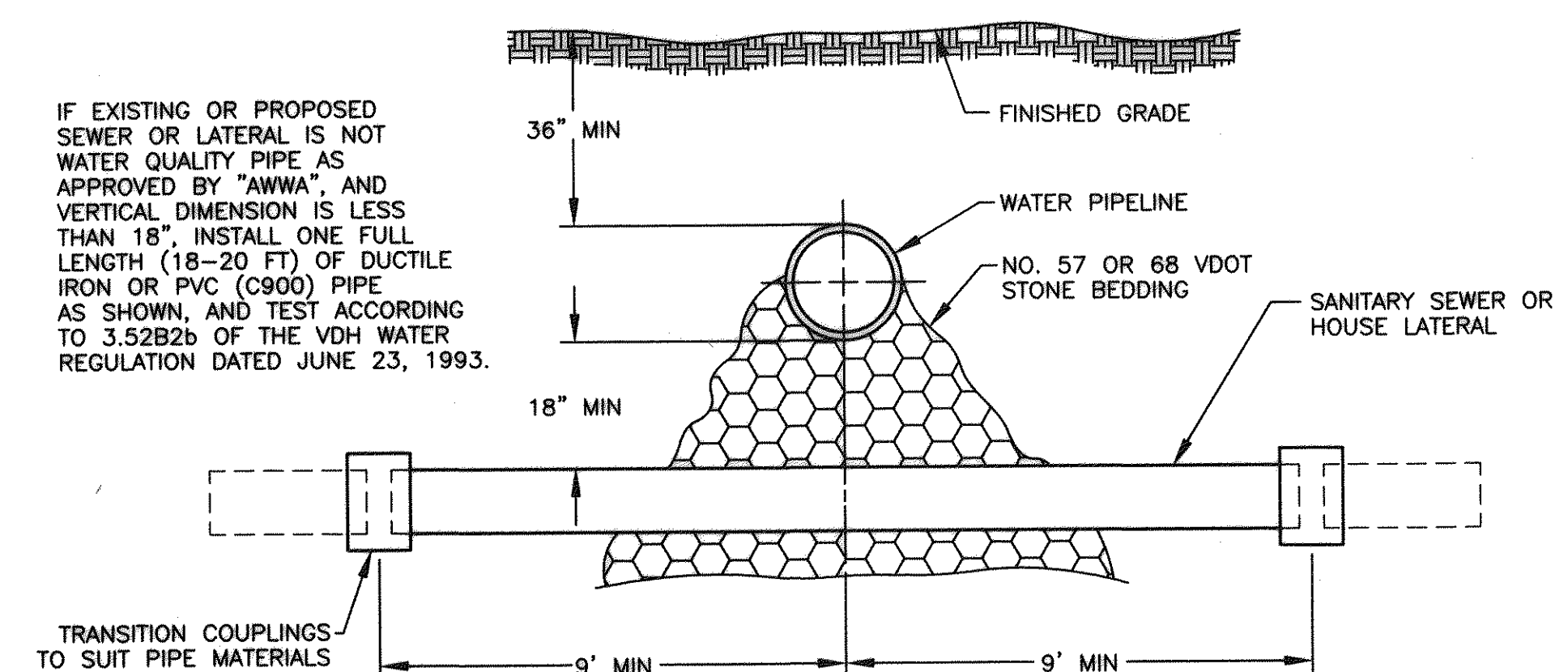


ENCASED CREEK CROSSING - SEWER

NOT TO SCALE

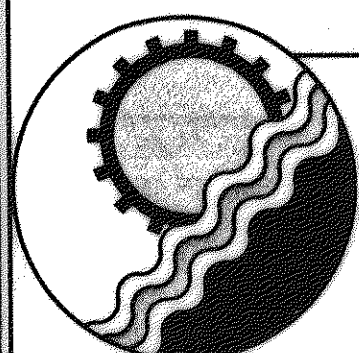


WATER PIPELINE CROSSING BELOW SEWER OR LATERAL



WATER PIPELINE CROSSING ABOVE SEWER OR LATERAL
SANITARY SEWER OR "HOUSE" LATERAL

NOT TO SCALE



ENGINEERING CONCEPTS, INC.

20 S. ROANOKE ST., PO BOX 619
FINCASTLE, VIRGINIA 24090
540.473.1253 FAX: 540.473.1254

AS-BUILT

Drawn	PSN
Designed	SCG
Checked	JST/WPJ
Approved	WPJ

GREENFIELD COLLECTOR AND
TINKER CREEK EXTENSION
SANITARY SEWER DETAILS

DECEMBER 1996

PROJECT: 96081

22 of 27