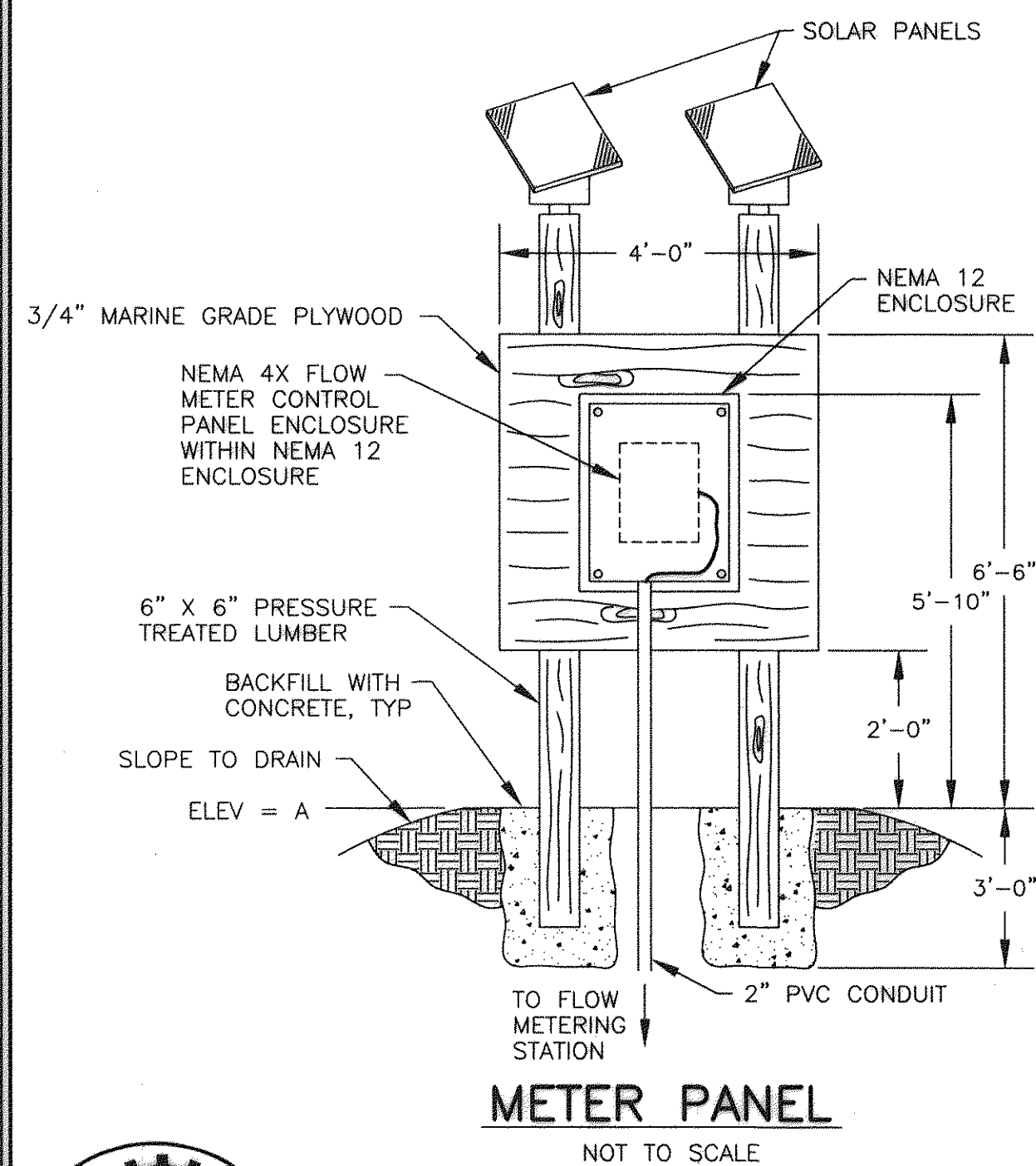
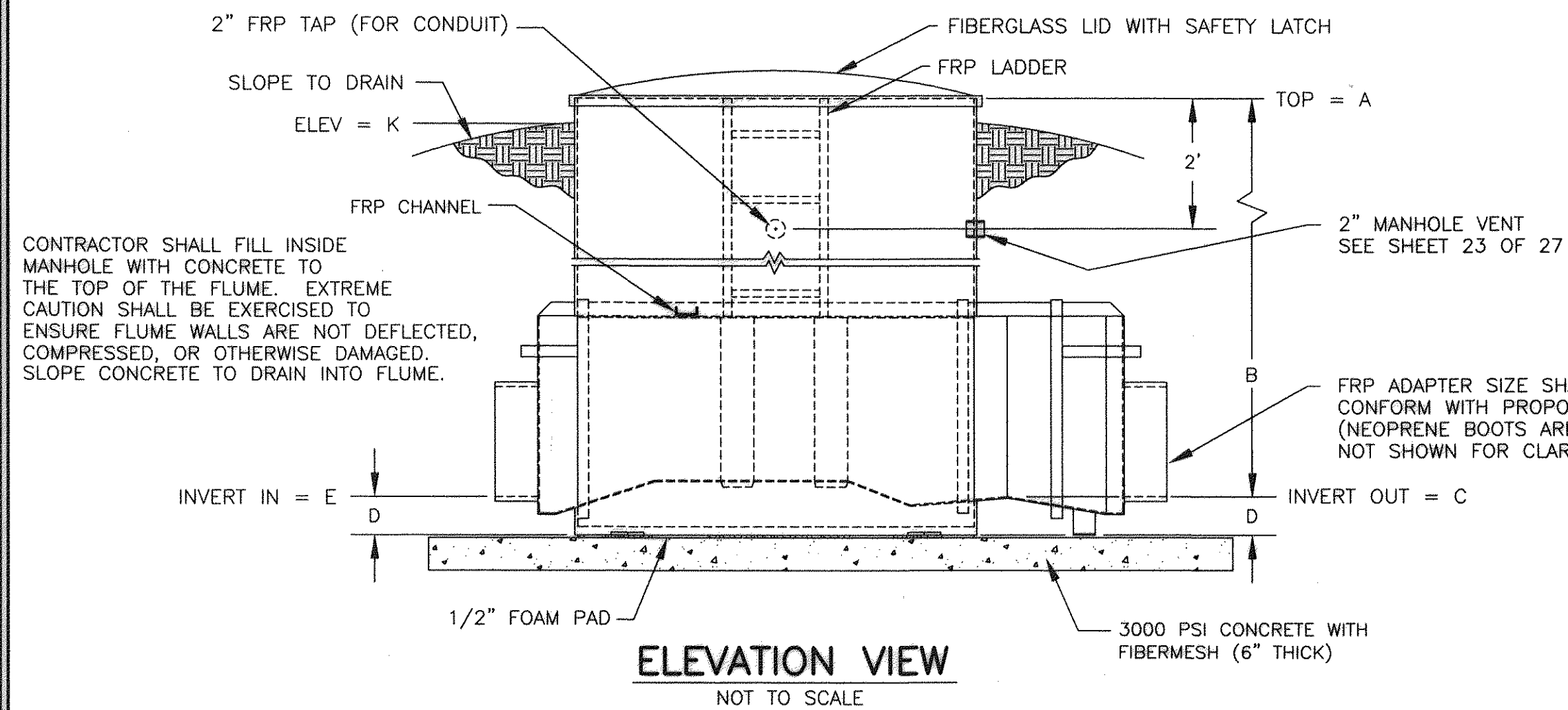
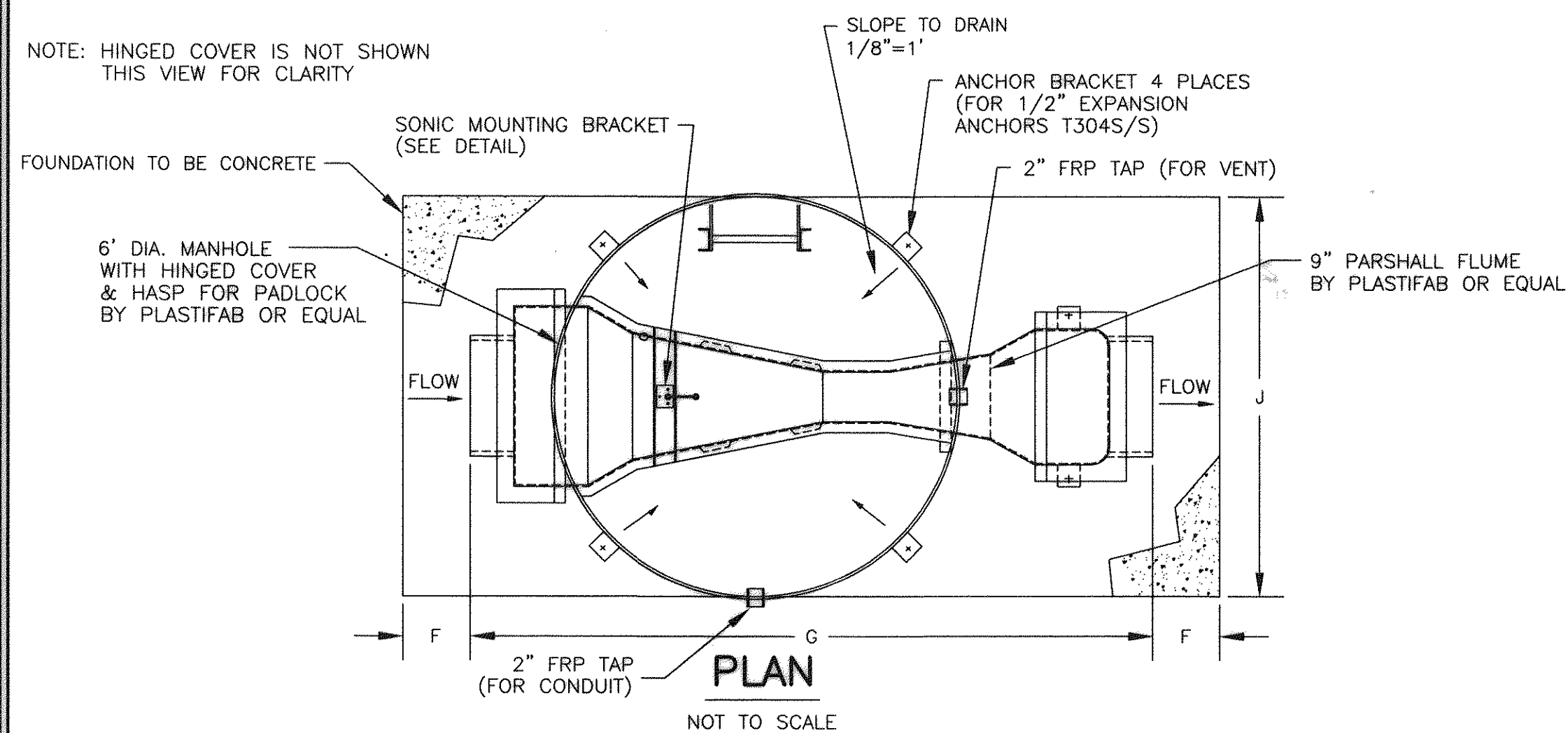


## MANHOLE DIMENSIONS

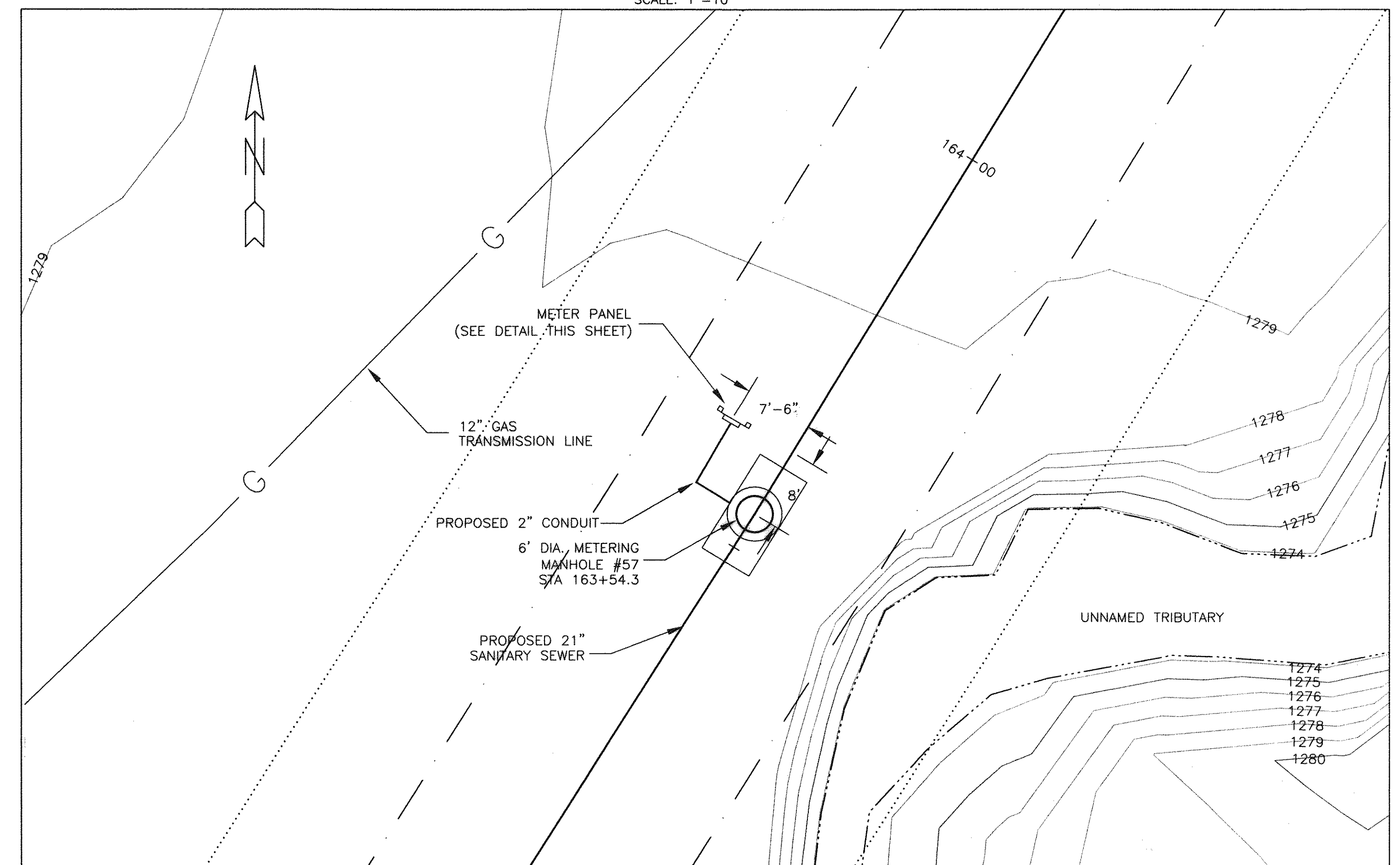
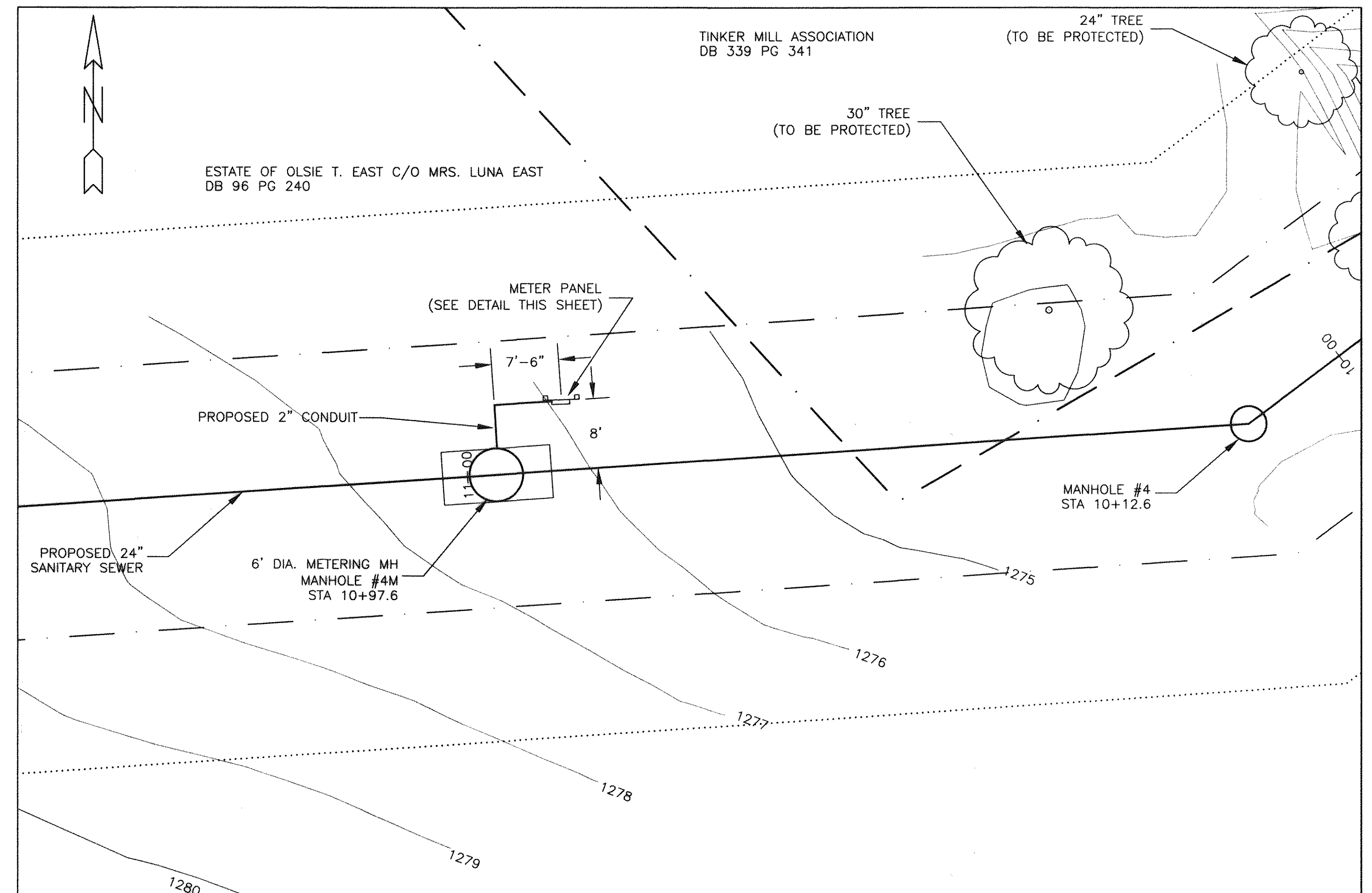
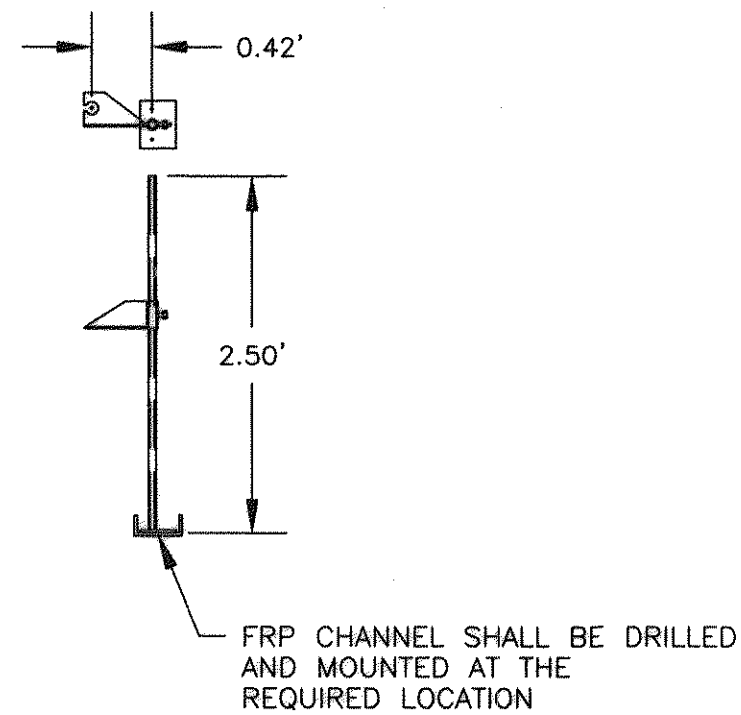
MANHOLE	STATION	A	B	C	D	E	F	G	J	K
57	163+54.3	1280.0'	7.86'	1271.24'	0'-7"	1271.24'	1'-0"	10'-2"	6'-0"	1279.0'
4M	10+96.7	1177.6'	8.32'	1169.28'	0'-7"	1169.28'	1'-0"	10'-2"	6'-0"	1176.6'

NOTE: HINGED COVER IS NOT SHOWN  
THIS VIEW FOR CLARITY



### NOTES:

1. MATERIAL SHALL BE FRP (FIBERGLASS REINFORCED POLYESTER).
2. NEOPRENE BOOTS SHALL BE SECURED WITH STAINLESS STEEL BANDS.
3. THE MINIMUM MANHOLE BARREL THICKNESS SHALL BE 1/2" FRP.
4. HINGE, HASP, ANCHOR BRACKET & BOLTS SHALL BE TYPE 304 S/S.
5. FLUME AND MANHOLE MUST BE INSTALLED LEVEL.
6. LEVEL TOLERANCE SHALL BE LESS THAN 1/8", TROWELLED SMOOTH.
7. METER PANEL SHALL BE INSTALLED WITH PANEL ON DOWNSTREAM FACE OF PLYWOOD.
8. CONTRACTOR SHALL PAINT ENTIRE METER PANEL ASSEMBLY. COLOR TO BE SELECTED BY OWNER.



## EQUIPMENT SCHEDULE

FIBERGLASS MANHOLES: (QUANTITY=2)	PLASTIFAB 6' DIAMETER FIBERGLASS PACKAGED METERING MANHOLE, OR APPROVED EQUAL DEPTH: SEE MANHOLE DIMENSIONS TABLE MANHOLES SHALL BE STRUCTURALLY STRONG, WATERTIGHT AND CORROSION RESISTANT TO MANY INDUSTRIAL CHEMICALS MANHOLE BARRELS SHALL BE A MINIMUM OF 1/2" THICK INTERIOR OF BARRELS SHALL HAVE A 15-20 MIL THICK WHITE GEL COAT
FLOWMETERS (QUANTITY=2)	ISCO MODEL 4210 (NO SUBSTITUTIONS ALLOWED) FLOWMETERS SHALL YIELD: FLOWRATE TOTAL FLOW PEAK FLOW FLOWMETERS SHALL HAVE A 4 TO 20 mA OUTPUT FLOWMETERS SHALL CAPABLE OF COMPUTER INTERFACE WITH ISCO FLOW LINK SOFTWARE PROVIDE INTERCONNECTING CABLES AS REQUIRED
FLUMES (QUANTITY=2)	PLASTIFAB 9" PARSHALL FLUME FLUMES SHALL ALLOW SMOOTH FLOW TRANSITION FROM PIPE FLOW TO FLUME FLOW FLUMES SHALL BE ABLE TO HANDLE FROM .059 TO 5.73 MGD FLUMES SHALL BE INTEGRALLY BONDED INTO FIBERGLASS MANHOLE FLUMES SHALL BE PROVIDED WITH 3" INSERTABLE PARSHALL FLUME FLUMES SHALL BE PROVIDED WITH REMOVABLE FIBERGLASS GRATING OVER FLUME INSIDE OF MANHOLES
POWER SUPPLY: (QUANTITY=2 OF EACH)	ISCO MODEL 68-3000-027 SOLAR PANEL ISCO MODEL 68-3000-100 SOLAR PANEL ISCO MODEL 946 LEAD ACID BATTERY & SPARES ISCO MODEL 961 BATTERY CHARGER

No.	Revision	By	Appd.	Date	Drawn
1	Metering Manhole 4M	SCG	WPJ	May 1997	JHG
					SCG
					Checked WPJ/JST
					Approved WPJ