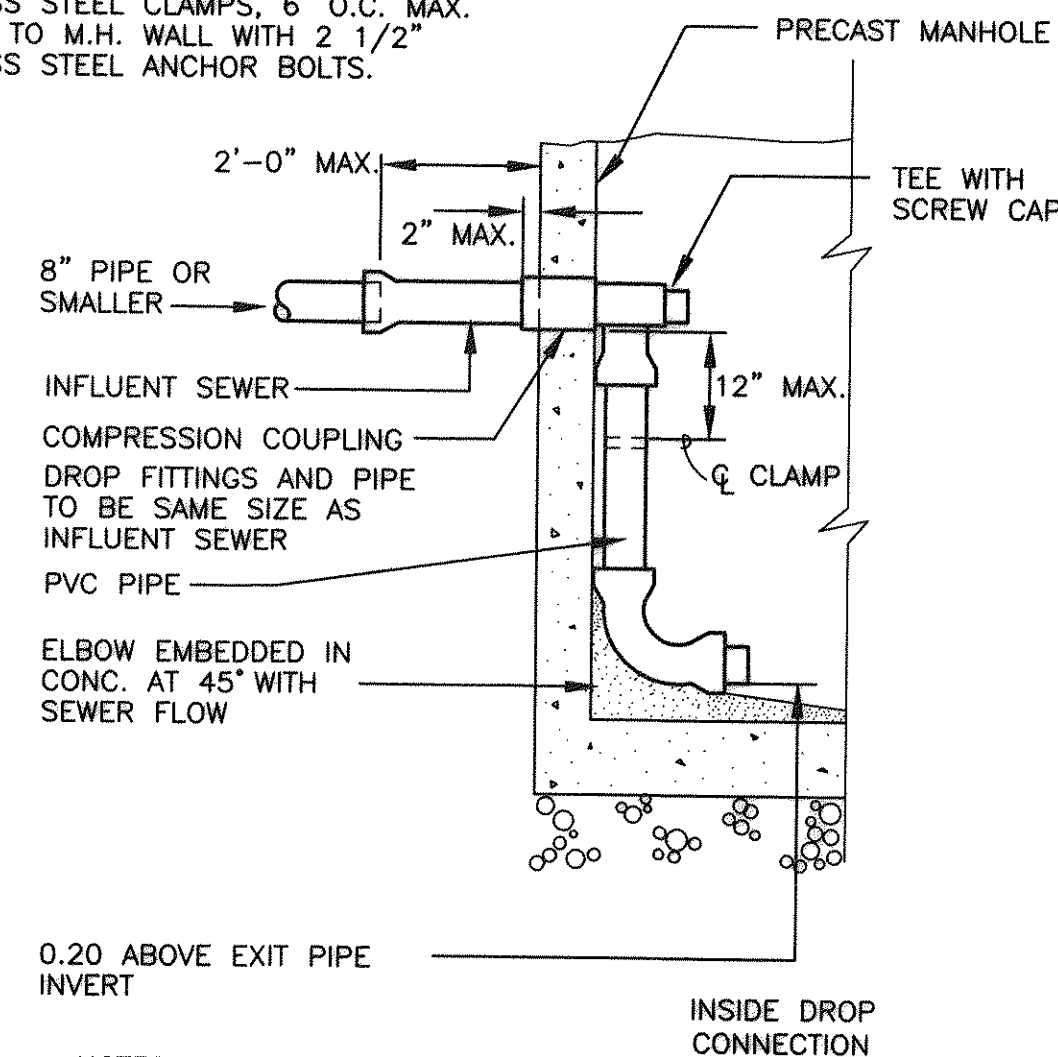


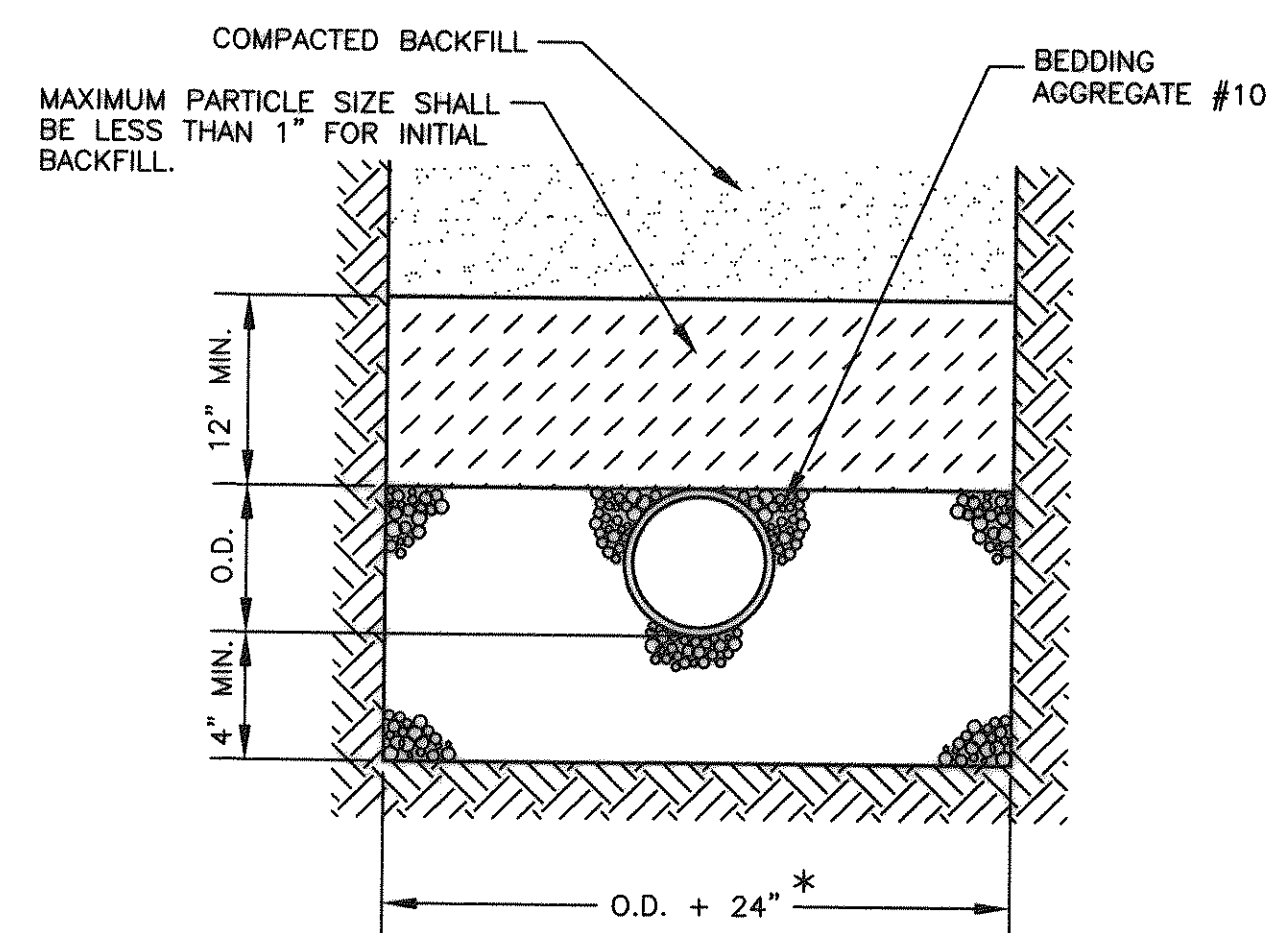
PIPE TO BE PLACED AS CLOSE AS POSSIBLE TO M.H. WALL AND TO BE SECURED TO THE WALL WITH 1 1/2" X 12 GA. STAINLESS STEEL CLAMPS, 6' O.C. MAX. ANCHOR TO M.H. WALL WITH 2 1/2" STAINLESS STEEL ANCHOR BOLTS.



NOTES:

1. DROP CONSTRUCTION IS TO BE AT EVERY LOCATION WHERE THE INFLUENT INVERT IS GREATER THAN OR EQUAL TO 2'-0" ABOVE THE EFFLUENT SEWER INVERT.

DROP CONSTRUCTION AT STANDARD MANHOLE



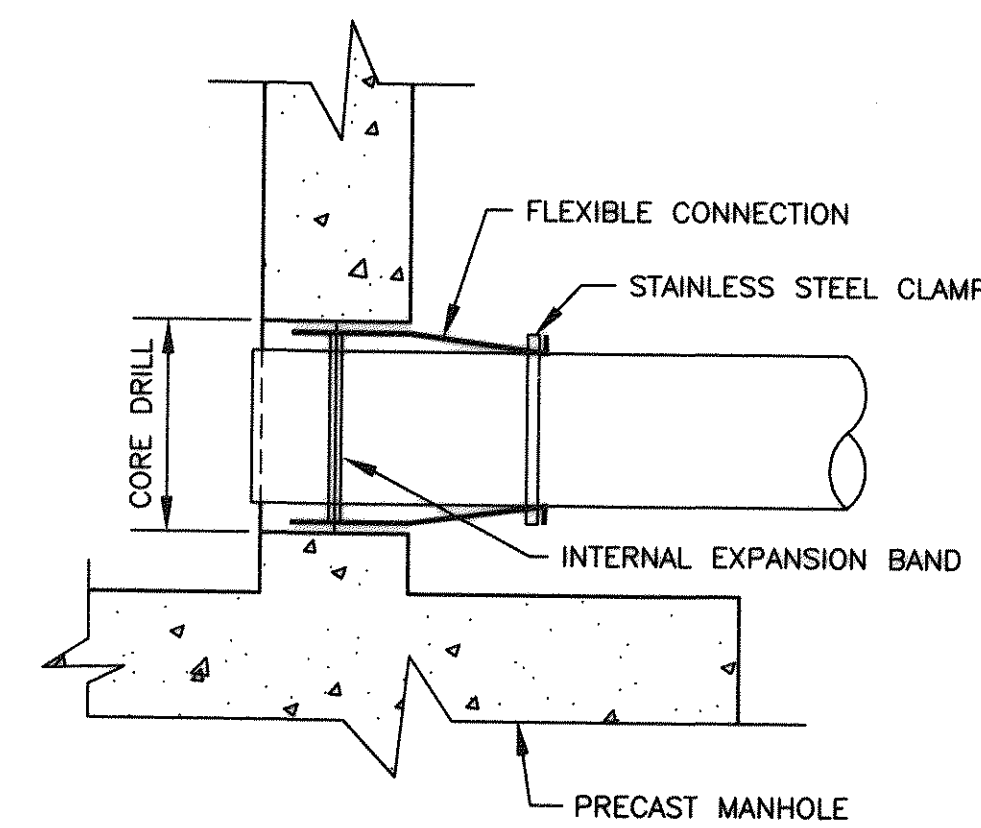
NOTES:

1. WHERE THE TRENCH BOTTOM IS IN ROCK, IT SHALL BE EXCAVATED TO A MINIMUM OF 8" BELOW THE BOTTOM OF THE PIPE AND BACKFILLED WITH BEDDING MATERIAL.
2. WHERE PIPE FOUNDATIONS ARE YIELDING, PIPE SHALL BE BEDDED ON A MINIMUM OF 8" BEDDING MATERIAL.

* FOR PIPE LESS THAN 12" THE TRENCH WIDTH MAY BE 36" MAXIMUM.

UTILITY BEDDING DETAIL - TYPE 3

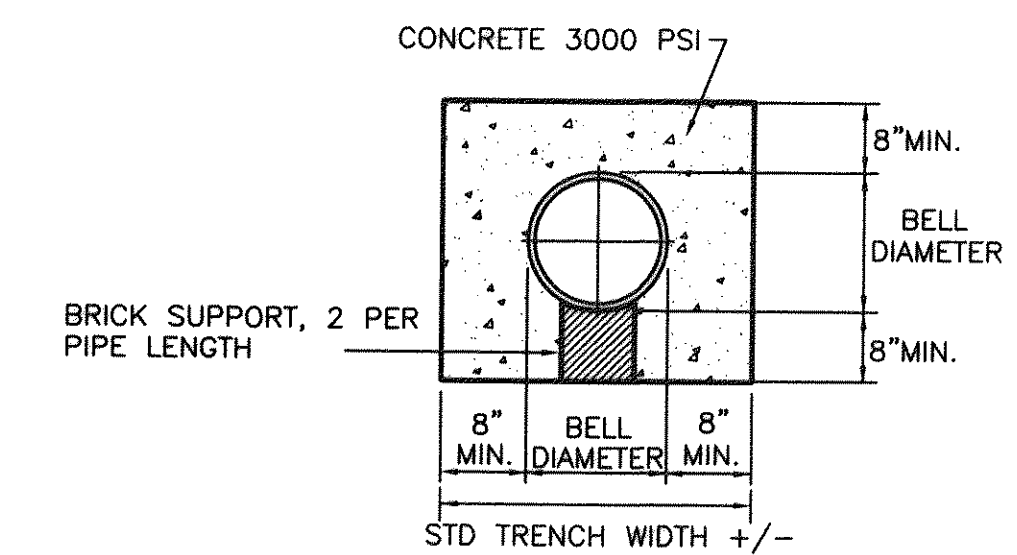
REF: 1993 VDOT ROAD AND BRIDGE STANDARDS DETAIL 1401.01



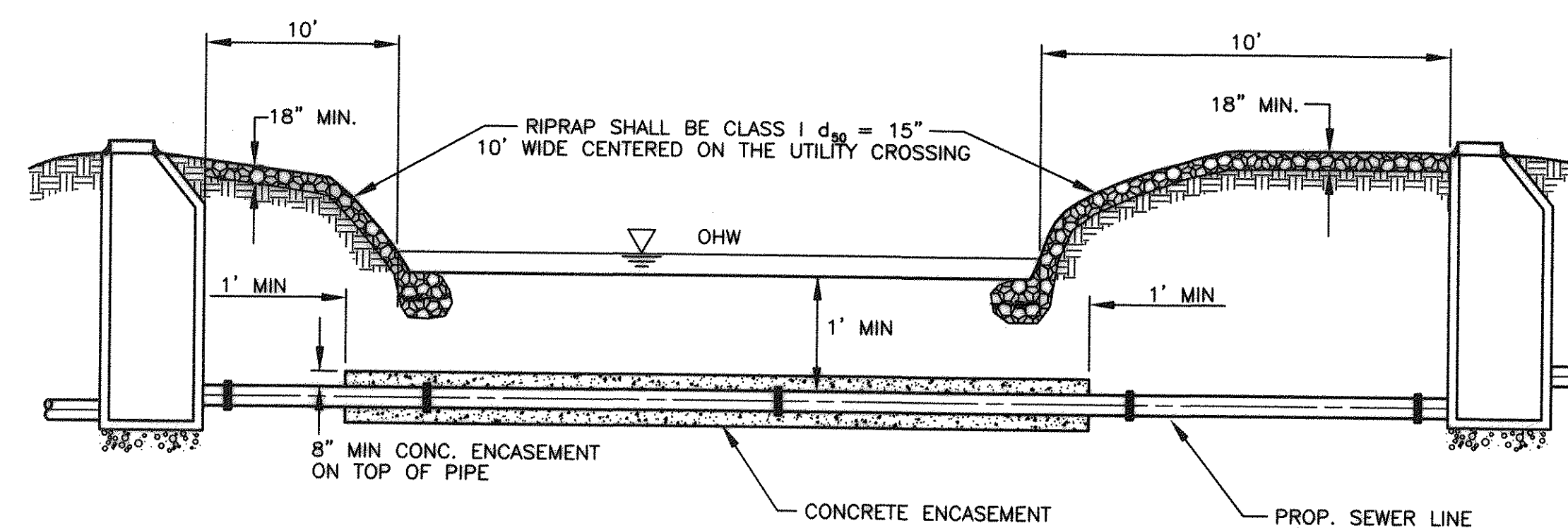
ALL PIPELINE CONNECTIONS TO PRECAST MANHOLES SHALL BE MADE WITH A FLEXIBLE BOOT. THE BOOT SHALL MEET ASTM SPECIFICATION C-923. BOOT SHALL BE MADE FROM NEOPRENE RUBBER AND HAVE A 3/8" MINIMUM WALL THICKNESS THROUGHOUT. THE INTERNAL EXPANSION BAND TO SECURE THE BOOT IN PLACE SHALL CONFORM TO ALUMINUM MATERIAL SPECIFICATION 6061-T6. THE EXTERNAL BAND TO CLAMP AND SEAL THE BOOT TO THE PIPE SHALL BE STAINLESS STEEL CORROSION RESISTANT CONFORMING TO ASTM SPECIFICATION A-167. THE PORT TO RECEIVE THE BOOT SHALL BE WELDED AND SHALL ALLOW FOR LATERAL AND VERTICAL ANGULAR ADJUSTMENT THRU 20 DEGREES IN ALL DIRECTIONS. ALL FIELD INSTALLATION OF PIPE THRU FLEXIBLE CONNECTION SHALL BE DONE IN ACCORDANCE WITH THE MANUFACTURER'S RECOMMENDATIONS AND SPECIFICATIONS.

FLEXIBLE CONNECTION DETAIL

REF: 1993 VDOT ROAD AND BRIDGE STANDARDS DETAIL 1411.02

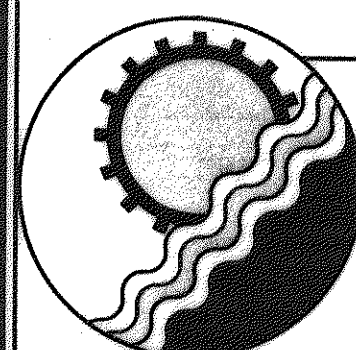


CONCRETE ENCASED PIPE



ENCASED CREEK CROSSING - SEWER

NOT TO SCALE



ENGINEERING CONCEPTS, INC.

20 S. ROANOKE ST., PO BOX 619
FINCASTLE, VIRGINIA 24090
540.473.1253 FAX: 540.473.1254

AS-BUILT

Drawn	JHG	GREENFIELD COLLECTOR EXTENSION SANITARY SEWER PROJECT	SCALE: NONE
Designed	SCG		MAY 1997
Checked	WPJ/JST	SANITARY SEWER DETAILS	PROJECT: 97024
Approved	WPD		11 of 16