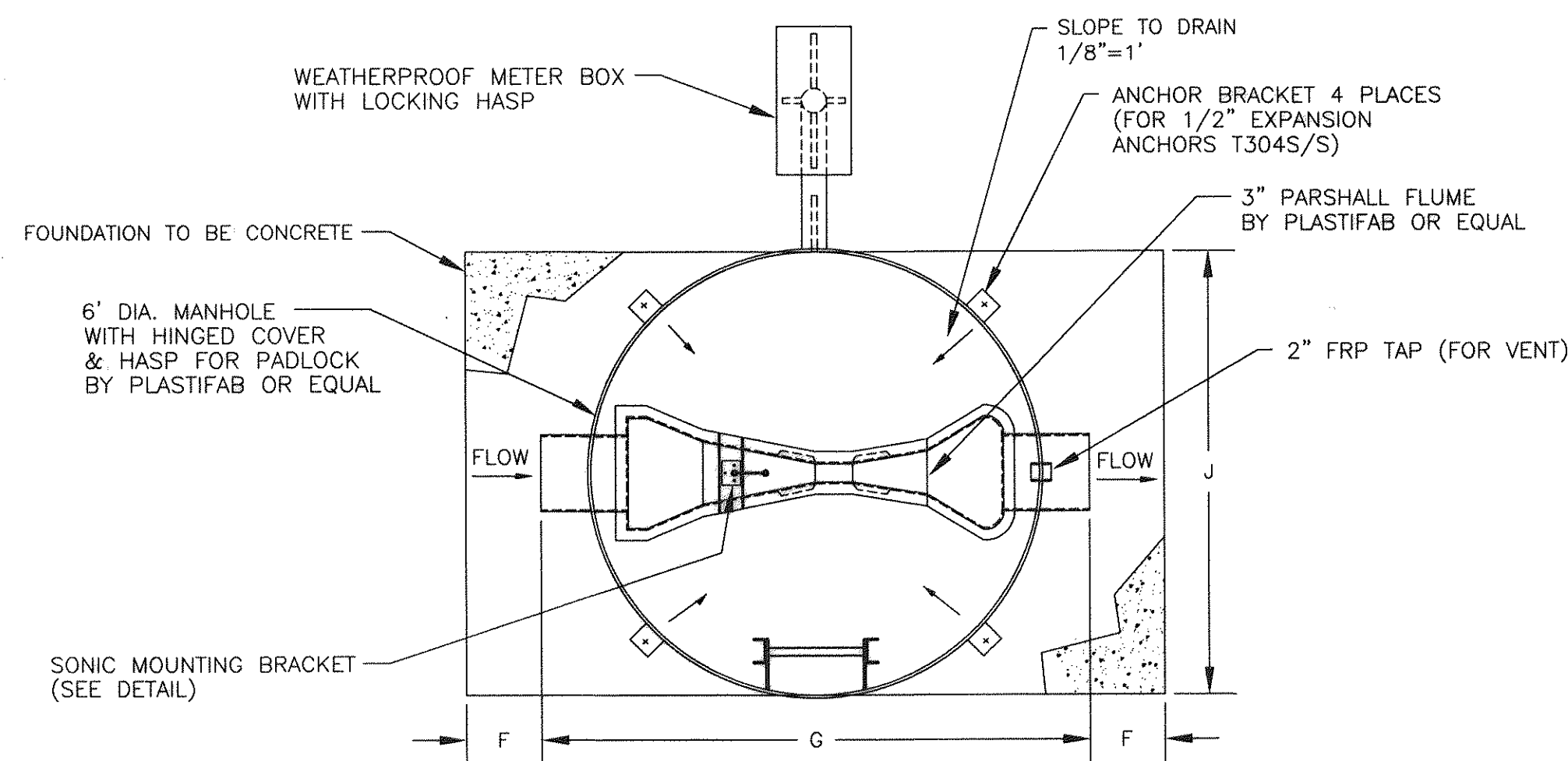


MANHOLE DIMENSIONS

MANHOLE	STATION	A	B	C	D	E	F	G	H	J	K
19	55+65.8	1322.7'	10.05'	1312.75'	0'-6"	1312.75'	1'-0"	7'-4"	1'-0"	6'-0"	1321.7'

NOTES:

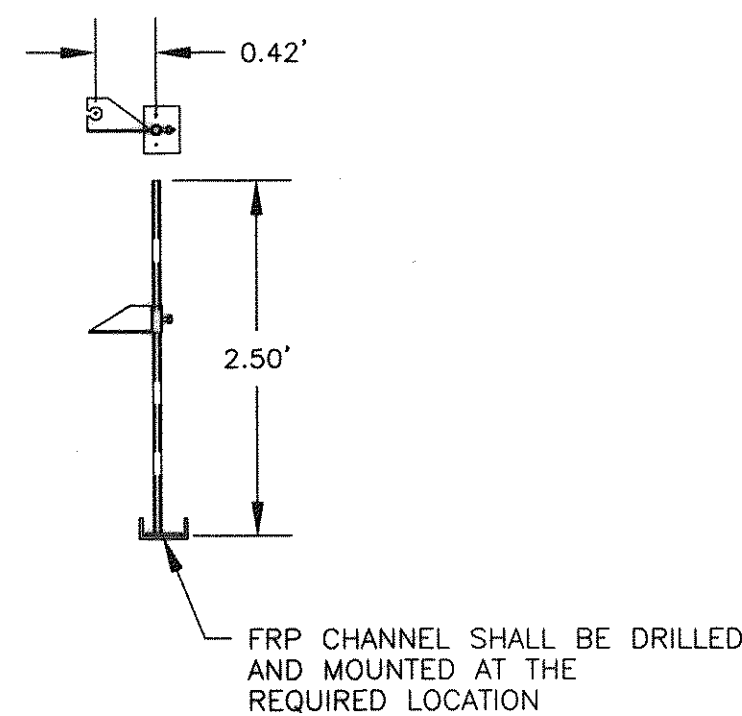
1. MATERIAL SHALL BE FRP (FIBERGLASS REINFORCED POLYESTER).
2. NEOPRENE BOOTS SHALL BE SECURED WITH STAINLESS STEEL BANDS.
3. THE MINIMUM MANHOLE BARREL THICKNESS SHALL BE 1/2" FRP.
4. HINGE, HASP, ANCHOR BRACKET & BOLTS SHALL BE TYPE 304 S/S.
5. FLUME AND MANHOLE MUST BE INSTALLED LEVEL.
6. LEVEL TOLERANCE SHALL BE LESS THAN 1/8", TROWELLED SMOOTH.
7. METER PANEL SHALL BE INSTALLED WITH PANEL ON DOWNSTREAM FACE OF PLYWOOD.
8. CONTRACTOR SHALL PAINT ENTIRE METER PANEL ASSEMBLY. COLOR TO BE SELECTED BY OWNER.



NOTE: HINGED COVER IS NOT SHOWN THIS VIEW FOR CLARITY

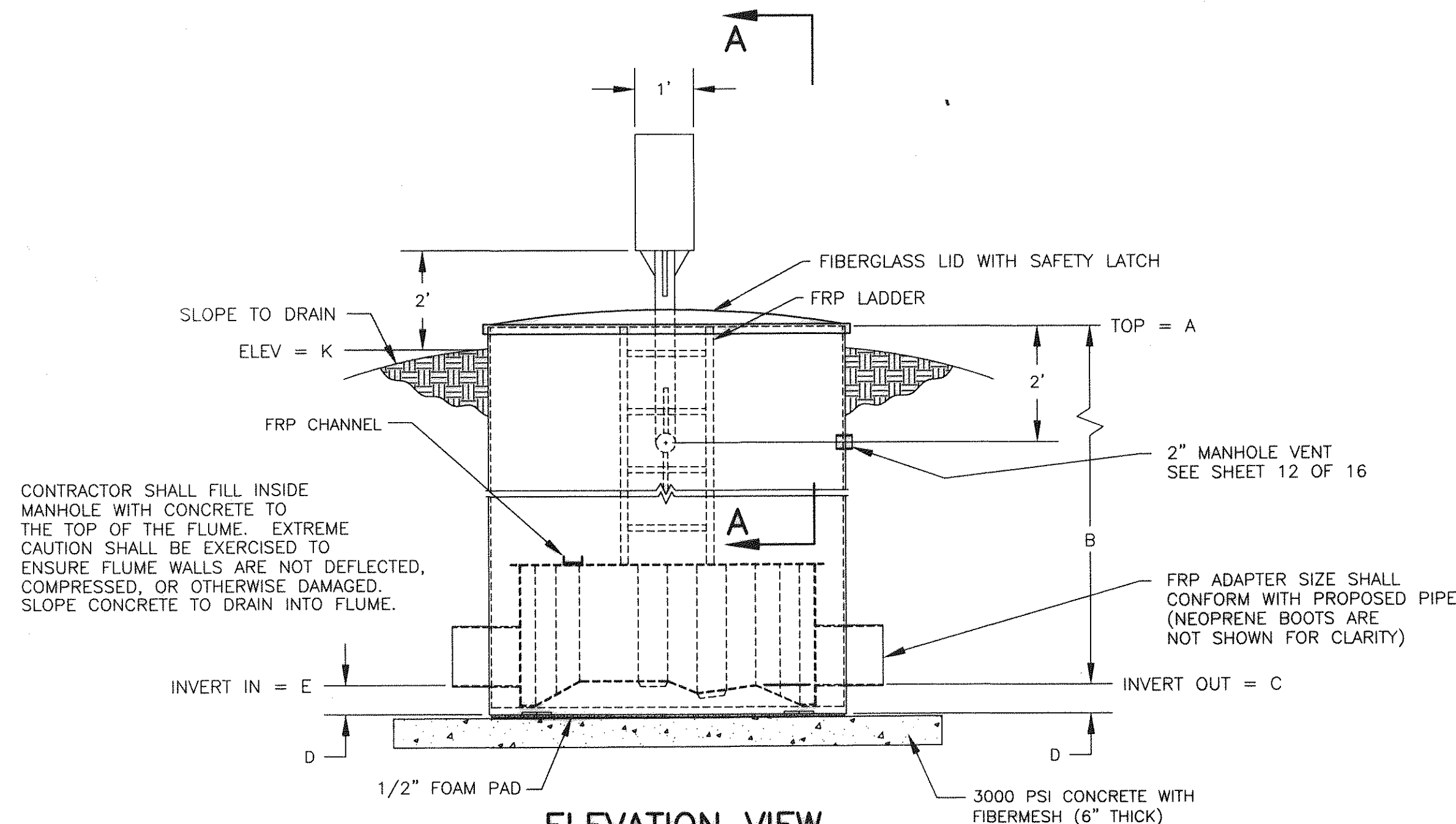
PLAN

NOT TO SCALE



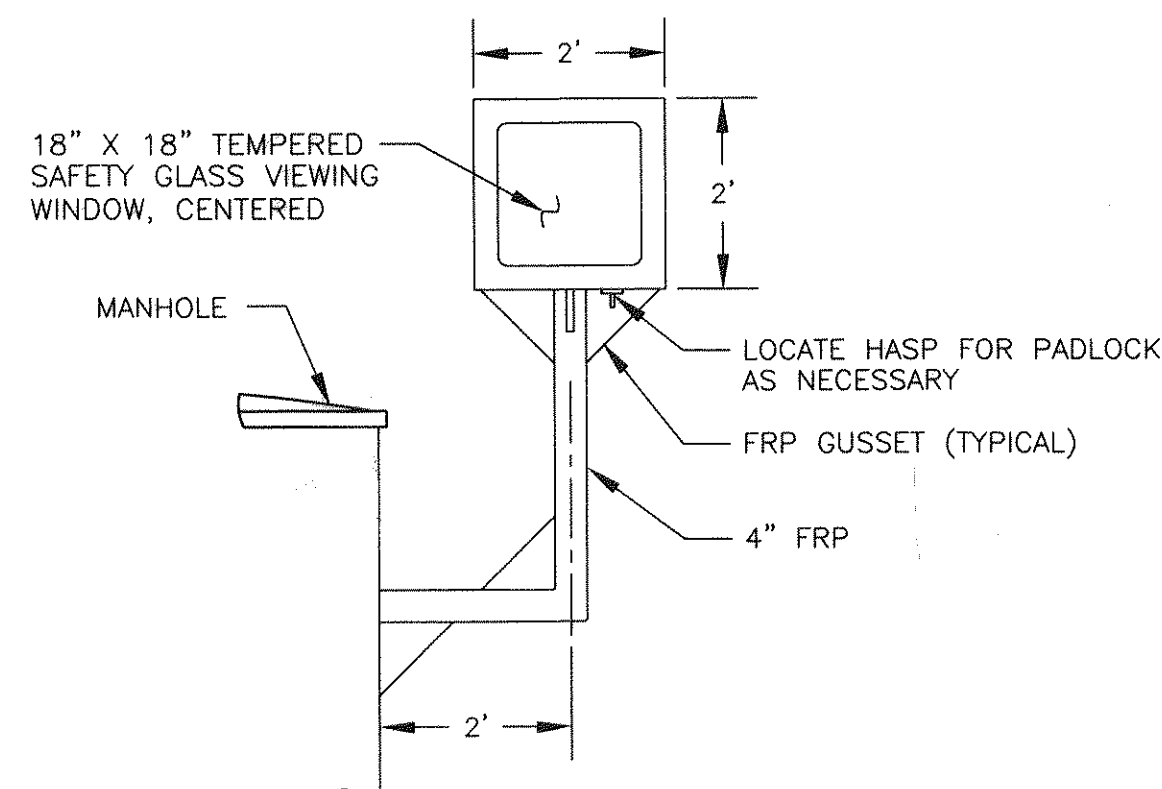
ADJUSTABLE SONIC MOUNTING BRACKET

TYPE 304 STAINLESS STEEL



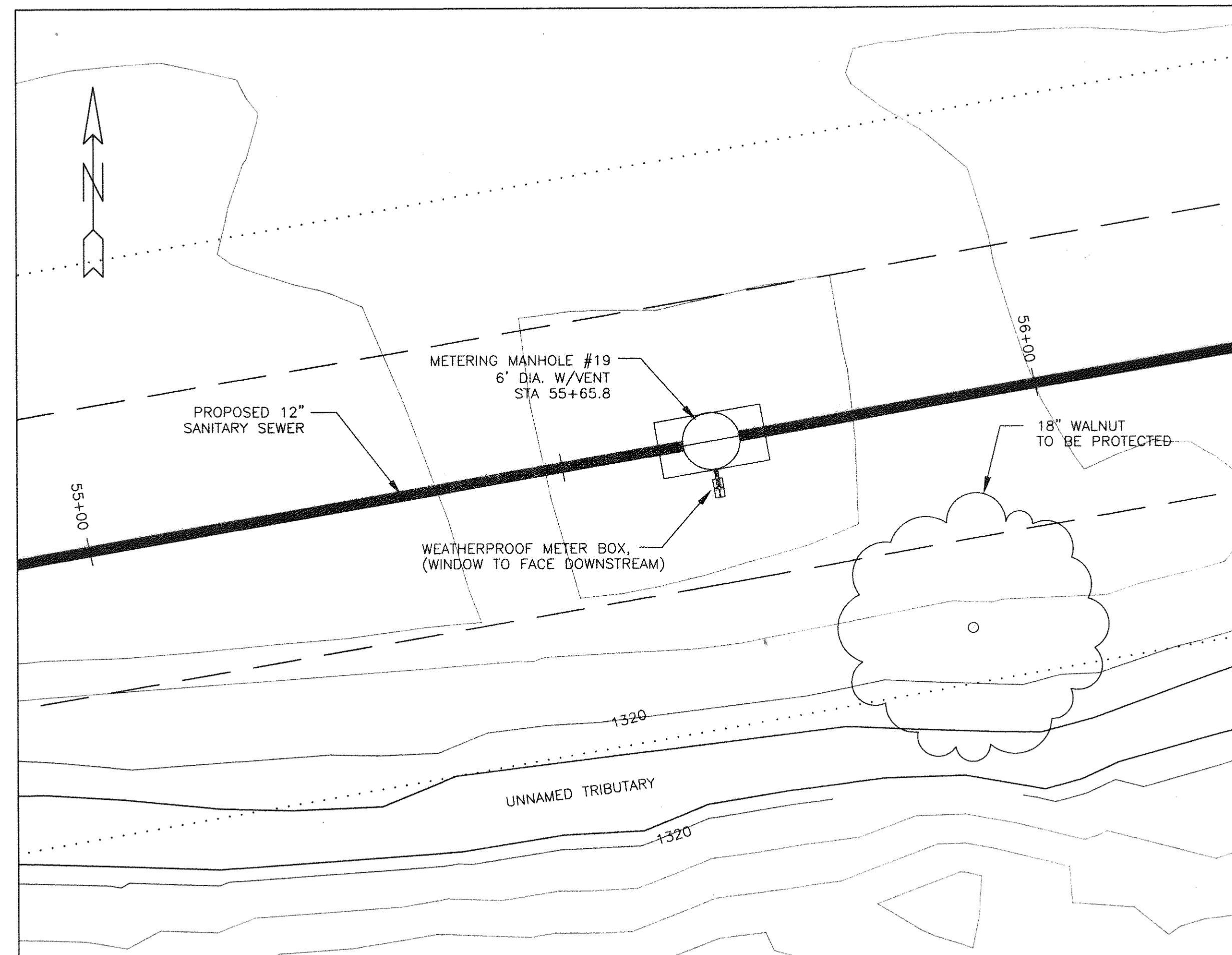
ELEVATION VIEW

NOT TO SCALE



SECTION A-A

NOT TO SCALE

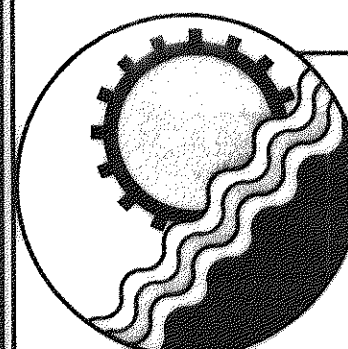


METERING MANHOLE #19 SITE PLAN

SCALE: 1" = 10'

EQUIPMENT SCHEDULE

FIBERGLASS MANHOLE:	PLASTIFAB 6" DIAMETER FIBERGLASS PACKAGED METERING MANHOLE, OR APPROVED EQUAL DEPTH: SEE MANHOLE DIMENSIONS TABLE MANHOLE SHALL BE STRUCTURALLY STRONG, WATERTIGHT AND CORROSION RESISTANT TO MANY INDUSTRIAL CHEMICALS MANHOLE BARREL SHALL BE A MINIMUM OF 1/2" THICK INTERIOR OF BARREL SHALL HAVE A 15-20 MIL THICK WHITE GEL COAT
FLOWMETER:	ISCO MODEL 4210 (NO SUBSTITUTIONS ALLOWED) FLOWMETER SHALL YIELD: FLOWRATE TOTAL FLOW PEAK FLOW FLOWMETER SHALL HAVE A 4 TO 20 mA OUTPUT FLOWMETER SHALL CAPABLE OF COMPUTER INTERFACE WITH ISCO FLOW LINK SOFTWARE PROVIDE INTERCONNECTING CABLE AS REQUIRED
FLUME:	PLASTIFAB 3" PARSHALL FLUME FLUME SHALL ALLOW SMOOTH FLOW TRANSITION FROM PIPE FLOW TO FLUME FLOW FLUME SHALL BE ABLE TO HANDLE FROM .018 TO 1.20 MGD FLUME SHALL BE INTEGRALLY BONDED INTO FIBERGLASS MANHOLE FLUME SHALL BE PROVIDED WITH REMOVABLE FIBERGLASS GRATING OVER FLUME INSIDE OF MANHOLE
POWER SUPPLY:	ISCO MODEL 60-1394-023 EXTERNAL DC POWER CONNECT CABLE



ENGINEERING CONCEPTS, INC.

20 S. ROANOKE ST., PO BOX 619
FINCASTLE, VIRGINIA 24090
540.473.1253 FAX: 540.473.1254

AS-BUILT

Drawn	JHG	GREENFIELD COLLECTOR EXTENSION SANITARY SEWER PROJECT	SCALE: AS SHOWN
Designed	SCG		MAY 1997
Checked	WPJ/JST	FLOW METERING MANHOLE SITE PLAN & DETAILS	PROJECT: 97024
Approved	WPJ		13 of 16