

**TEMPORARY SEDIMENT TRAP DATA**

STR.	D.A. (ACRES)	STORAGE (C.Y.)	WEIR LENGTH (FT.)	WEIR HEIGHT (FT.)	BERM HEIGHT (FT.)	TOP LENGTH (FT.)	TOP WIDTH (FT.)	TOTAL DEPTH (FT.)
1	3.0	402 (TOTAL) 201 (WET) 201 (DRY)	418 (TOTAL) 209 (WET) 209 (DRY)	18'	1.0'	3.0'	78'	48'
2	3.0	402 (TOTAL) 201 (WET) 201 (DRY)	418 (TOTAL) 209 (WET) 209 (DRY)	18'	1.0'	3.0'	78'	48'
3	3.0	402 (TOTAL) 201 (WET) 201 (DRY)	418 (TOTAL) 209 (WET) 209 (DRY)	18'	1.0'	3.0'	78'	48'
4	3.0	402 (TOTAL) 201 (WET) 201 (DRY)	418 (TOTAL) 209 (WET) 209 (DRY)	18'	1.0'	3.0'	78'	48'

**TABLE 3.31-B**  
(Revised June 2003)

**TEMPORARY SEEDING SPECIFICATIONS**  
QUICK REFERENCE FOR ALL REGIONS

APPLICATION DATES	SPECIES	APPLICATION RATES
Sept. 1 - Feb. 15	50/50 Mix of Annual Ryegrass (lolium multi-florum) & Cereal (Winter) Rye (Secale cereale)	50 - 100 (lbs/acre)
Feb. 16 - Apr. 30	Annual Ryegrass (lolium multi-florum)	60 - 100 (lbs/acre)
May 1 - Aug. 31	German Millet	50 (lbs/acre)

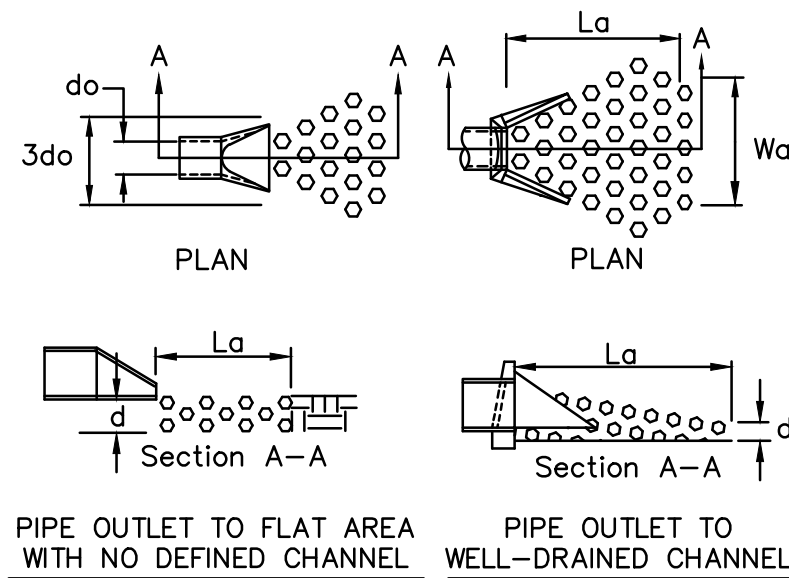
**FERTILIZER & LIME**

- Apply 10-10-10 fertilizer at a rate of 450 lbs. / acre (or 10 lbs. / 1,000 sq. ft.)
- Apply Pulverized Agricultural Limestone at a rate of 2 tons/acre (or 90 lbs. / 1,000 sq. ft.)

**NOTE:**

- A soil test is necessary to determine the actual amount of lime required to adjust the soil pH of site.
- Incorporate the lime and fertilizer into the top 4 - 6 inches of the soil by disking or by other means.
- When applying Slowly Available Nitrogen, use rates available in *Erosion & Sediment Control Technical Bulletin # 4, 2003 Nutrient Management for Development Sites* at <http://www.dor.state.va.us/sw/e&s.htm#nubs>

**TS TEMPORARY SEEDING SPECIFICATIONS**



- NOTES:**
- APRON LINING MAY BE RIP-RAP, GROUTED RIP-RAP, OR CONCRETE.
  - L<sub>o</sub> IS THE LENGTH OF THE RIP-RAP APRON AS CALCULATED USING PLATES 1.36d AND 1.36e.
  - d = 1.5 TIMES THE MAXIMUM STONE DIAMETER, BUT NOT LESS THAN 6".

**OP OUTLET PROTECTION**

**Erosion & Sediment Control Technical Bulletin No. 4**  
**Nutrient Management for Development Sites**

C. When applying maintenance fertilizer on established sod.

**Pounds of nitrogen per 1,000 sq. ft. if the fertilizer is less than 50 percent WIN**

Month	Tall Fescue Perennial Rye	Kentucky Bluegrass	Bermudagrass	Zoysiagrass
September	1	1	0	0
October	1	1	0	0
Early November	0	0	0	0
April	0	0	0	0
May	0.0-0.5	0.0-0.5	1	1
June	0	0	1	1
July/August	0	0	0	1
Yearly Lbs. N/1000 sf	2.5	2.5	2	2

**Pounds of nitrogen per 1,000 sq. ft. if the fertilizer is more than 50 percent WIN**

Month	Tall Fescue Perennial Rye	Kentucky Bluegrass	Bermudagrass	Zoysiagrass
August 1-5	1.5	1.5	0	0
October 1	1.5	1.5	0	0
April	0	0	1.5	1.5
May 1-5	0	0	0	0
June	0	0	1.5	1.5
Yearly Lbs. N/1000 sf	3	3	3	3

**FERTILIZER SPECIFICATIONS AND RATES FOR MANAGEMENT**

**TABLE 3.32-C**  
(Revised June 2003)

**PERMANENT SEEDING SPECIFICATIONS FOR APPALACHIAN/MOUNTAIN AREA**

LAND USE	SEED SPECIES	APPLICATION RATES
Minimum Care Lawn (Commercial or Residential)	Tall Fescue <sup>1</sup> Perennial Ryegrass <sup>2</sup> Kentucky Bluegrass <sup>3</sup>	90-100% 0-10% 0-10% TOTAL: 200-250 lbs.
High-Maintenance Lawn	Minimum of three (3) up to five (5) varieties of Kentucky Bluegrass from approved list for use in Virginia <sup>1</sup>	TOTAL: 125 lbs.
General Slope (3:1 or less)	Tall Fescue <sup>1</sup> Red Top Grass or Creeping Red Fescue Seasonal Nurse Crop <sup>3</sup>	125 lbs. 2 lbs. 20 lbs. TOTAL: 150 lbs.
Low-Maintenance Slope (Steeper than 3:1)	Tall Fescue <sup>1</sup> Red Top Grass or Creeping Red Fescue Seasonal Nurse Crop <sup>3</sup> Crownvetch <sup>4</sup>	125 lbs. 2 lbs. 20 lbs. 20 lbs. TOTAL: 150 lbs.

1 - When selecting varieties of turfgrass, use the Virginia Crop Improvement Association (VCIA) recommended turfgrasses variety list. Quality seed will bear a label indicating that they are approved by VCIA. A current turfgrass variety list is available at the local County Extension office or through VCIA at 804-746-4884 or at <http://sutton.ces.vt.edu/htm/TurfGrassPublicationsPublications2.html>

2 - Perennial Ryegrass will germinate faster and at lower soil temperatures than Tall Fescues, thereby providing cover and erosion resistance for seedbed.

3 - Use seasonal nurse crop in accordance with seeding dates as stated below:

March, April - May 15 <sup>th</sup>	Annual Rye
May 16 <sup>th</sup> - August 15 <sup>th</sup>	Foxtail Millet
August 16 <sup>th</sup> - September, October	Annual Rye
November - February	Winter Rye

4 - All legume seed must be properly inoculated. If Flatpea is used, increase to 30 lbs/acre. If Weeping Lovegrass is used, include in any slope or low maintenance mixture during warmer seeding periods, increase to 30 - 40 lbs/acre.

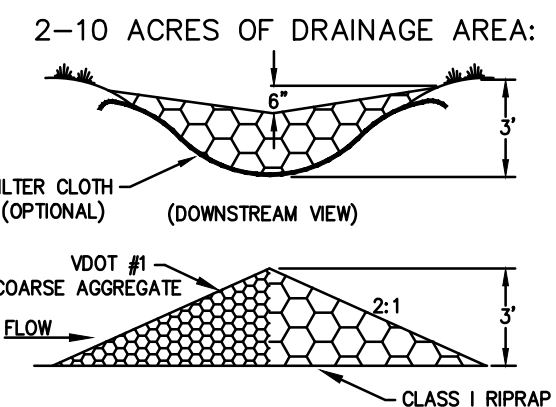
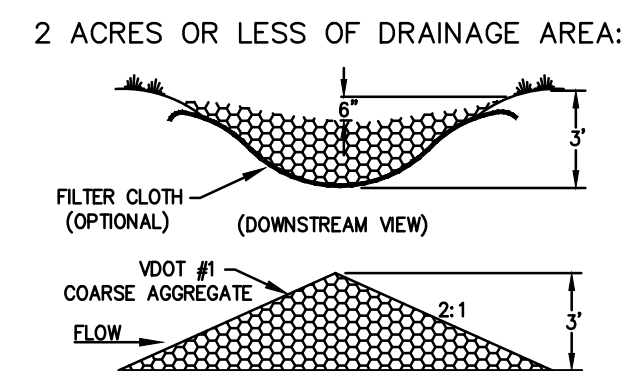
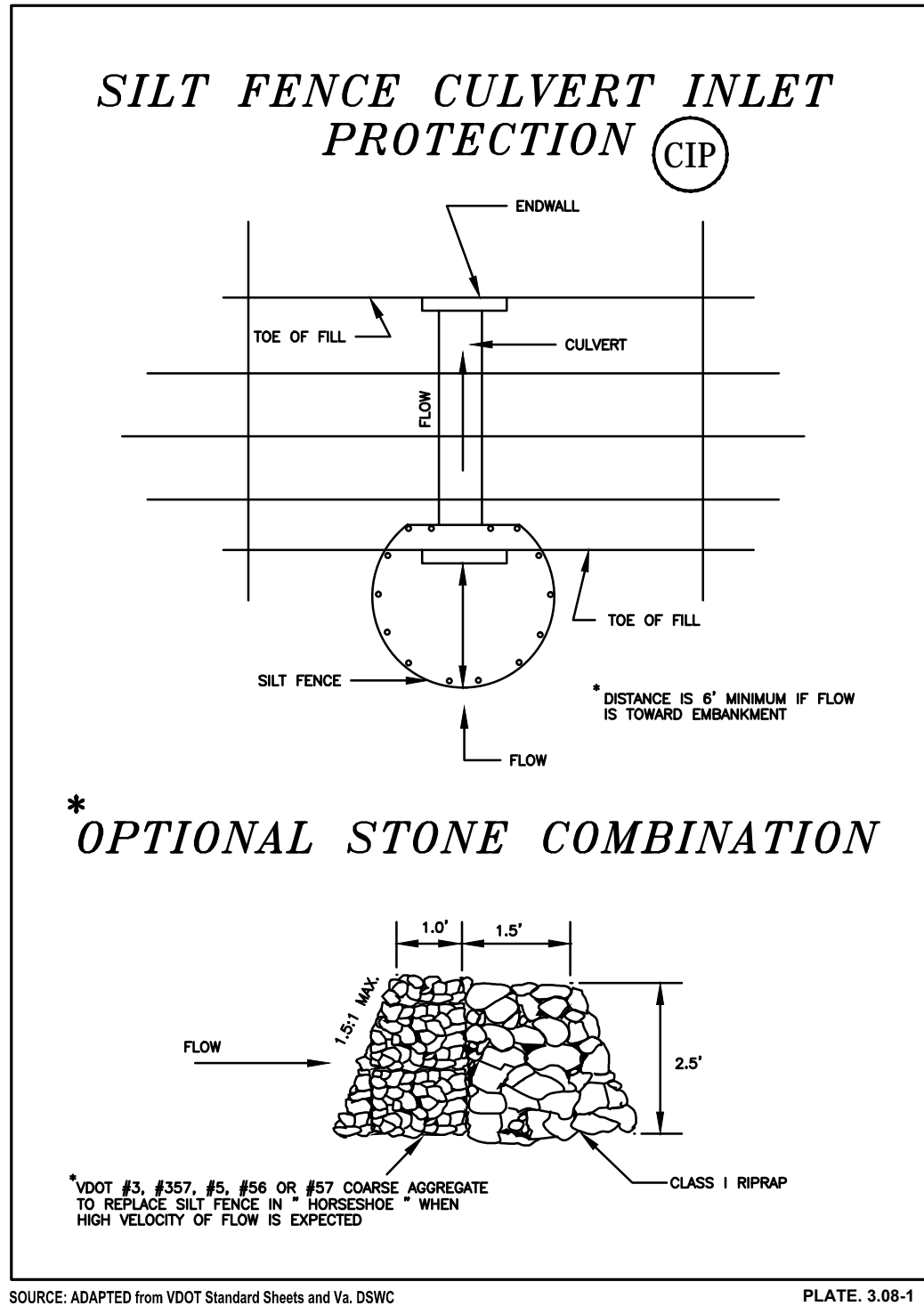
**FERTILIZER & LIME**

- Apply 10-20-10 fertilizer at a rate of 500 lbs. / acre (or 12 lbs. / 1,000 sq. ft.)
- Apply Pulverized Agricultural Limestone at a rate of 2 tons/acre (or 90 lbs. / 1,000 sq. ft.)

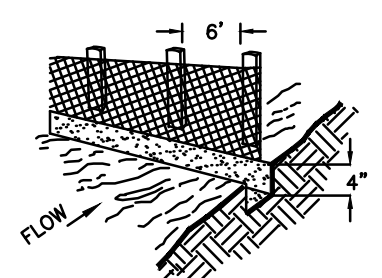
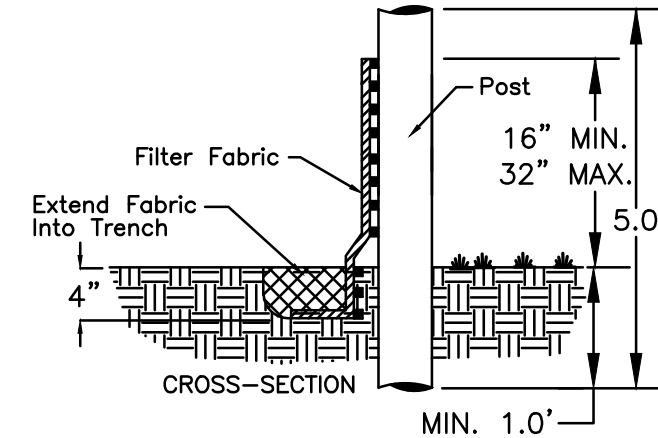
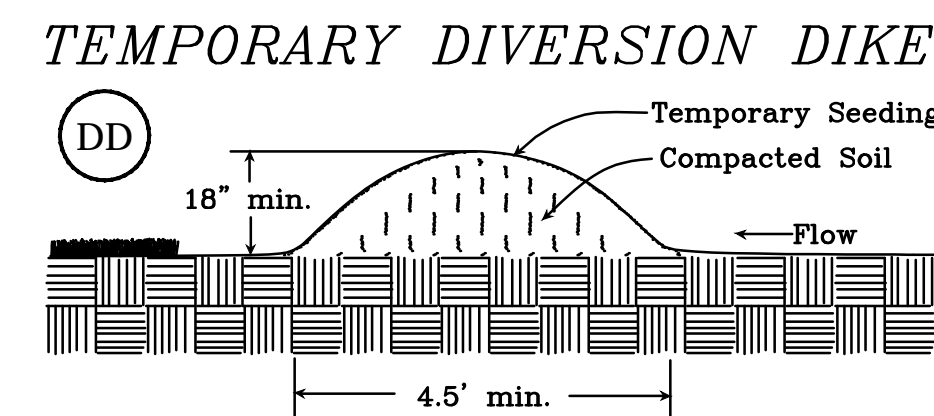
**NOTE:**

- A soil test is necessary to determine the actual amount of lime required to adjust the soil pH of site.
- Incorporate the lime and fertilizer into the top 4 - 6 inches of the soil by disking or by other means.
- When applying Slowly Available Nitrogen, use rates available in *Erosion & Sediment Control Technical Bulletin # 4, 2003 Nutrient Management for Development Sites* at <http://www.dor.state.va.us/sw/e&s.htm#nubs>

**PS PERMANENT SEEDING SPECIFICATIONS**



**CD ROCK CHECK DAM**



**SF CONSTRUCTION OF A SILT FENCE**  
EROSION AND SEDIMENT CONTROL STANDARD - 3.05

