

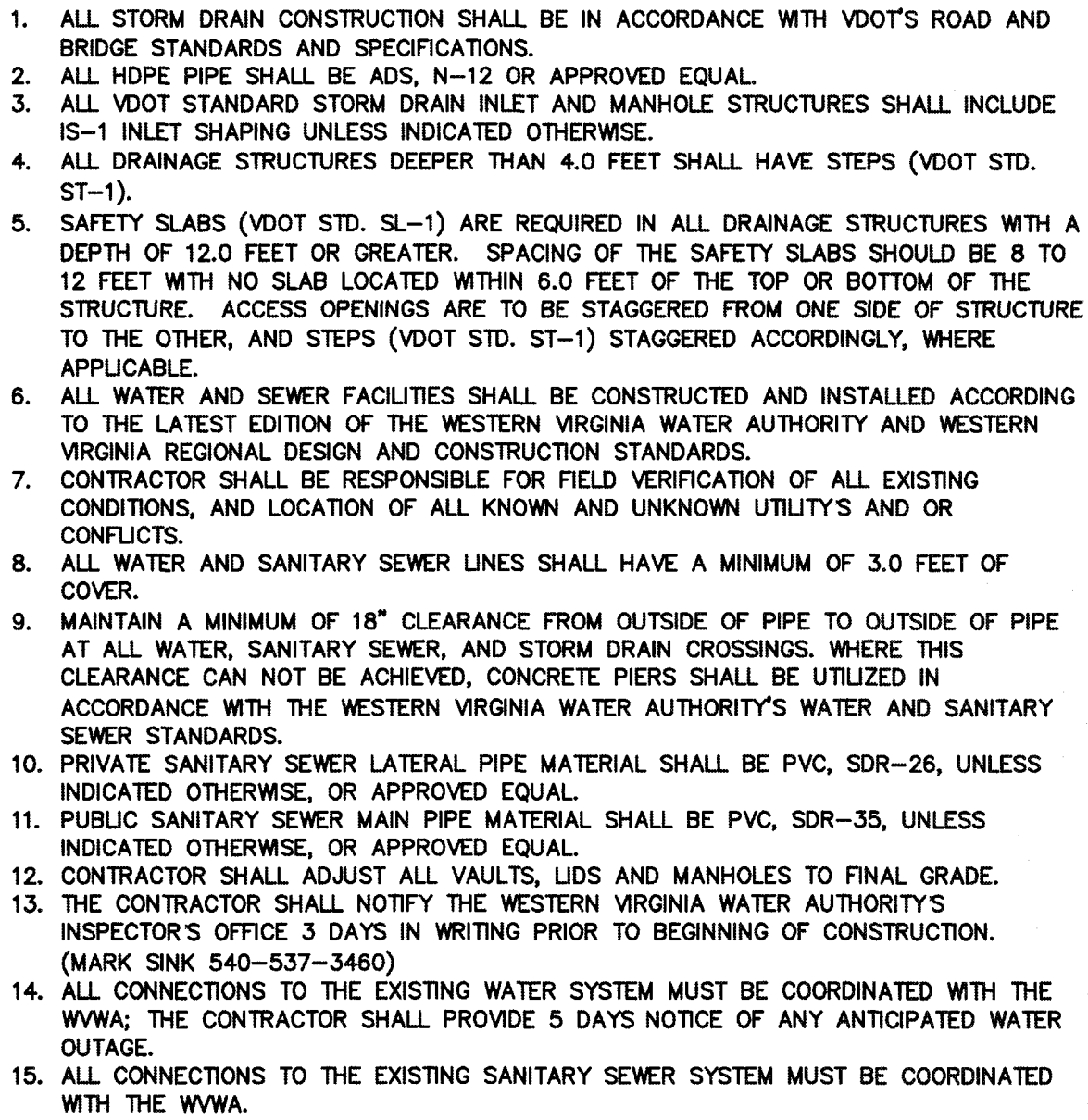
**SITE DEVELOPMENT PLAN FOR
LAWRENCE TRANSPORTATION
PREPARED FOR
LARE INC
VALLEY MAGISTERIAL DISTRICT
BOTETOURT COUNTY, VIRGINIA**

REVISIONS		DATE:
NO.	DESCRIPTION	
1		
2		
3		
4		
5		

SCALE: NONE

COMMISSION NO: 18-125

SHEET 9 OF 10



SHALLOW SLOPE

ON SHALLOW SLOPES, STRIPS OF NETTING PROTECTIVE COVERINGS MAY BE APPLIED ACROSS THE SLOPE.

WHERE THERE IS A BERM AT THE TOP OF THE SLOPE BERM THE MATERIAL OVER THE BERM AND ANCHOR IT BEHIND THE BERM.

BERM

STEP SLOPE

ON STEEP SLOPES, APPLY PROTECTIVE COVERING PARALLEL TO THE DIRECTION OF FLOW AND ANCHOR SECURELY.

PULLING MATERIAL DOWN TO A LEVEL AREA BEFORE TERMINATING THE INSULATING FIBER THE END UNDER 4" AND STAPLE AT 12" INTERVALS.

DITCH

IN DITCHES, APPLY PROTECTIVE COVERING PARALLEL TO THE DIRECTION OF FLOW. USE THICK SLOTE AS REQUIRED, AND JOINING MATERIAL IN THE CENTER OF THE DITCH IF AT ALL POSSIBLE.

