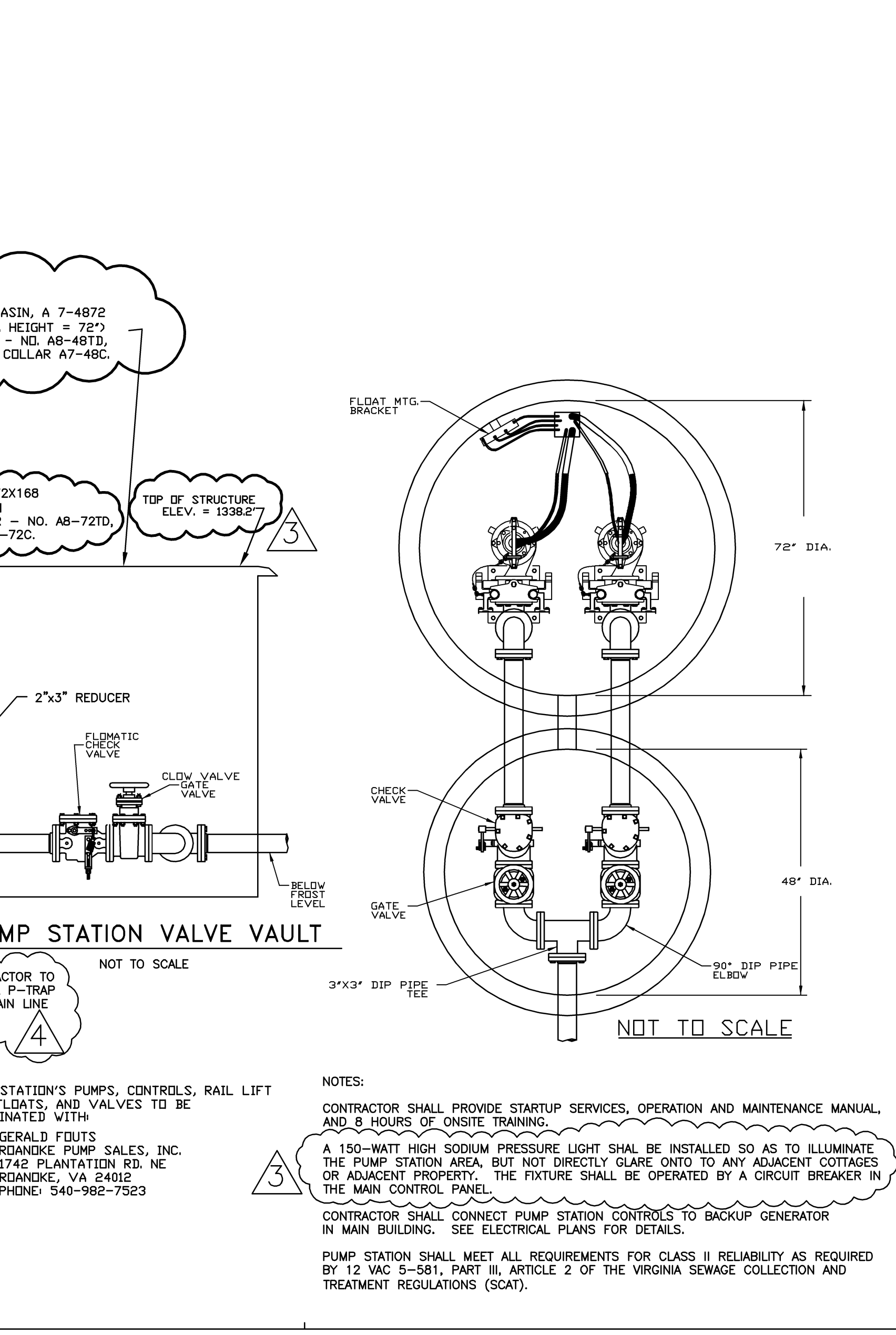
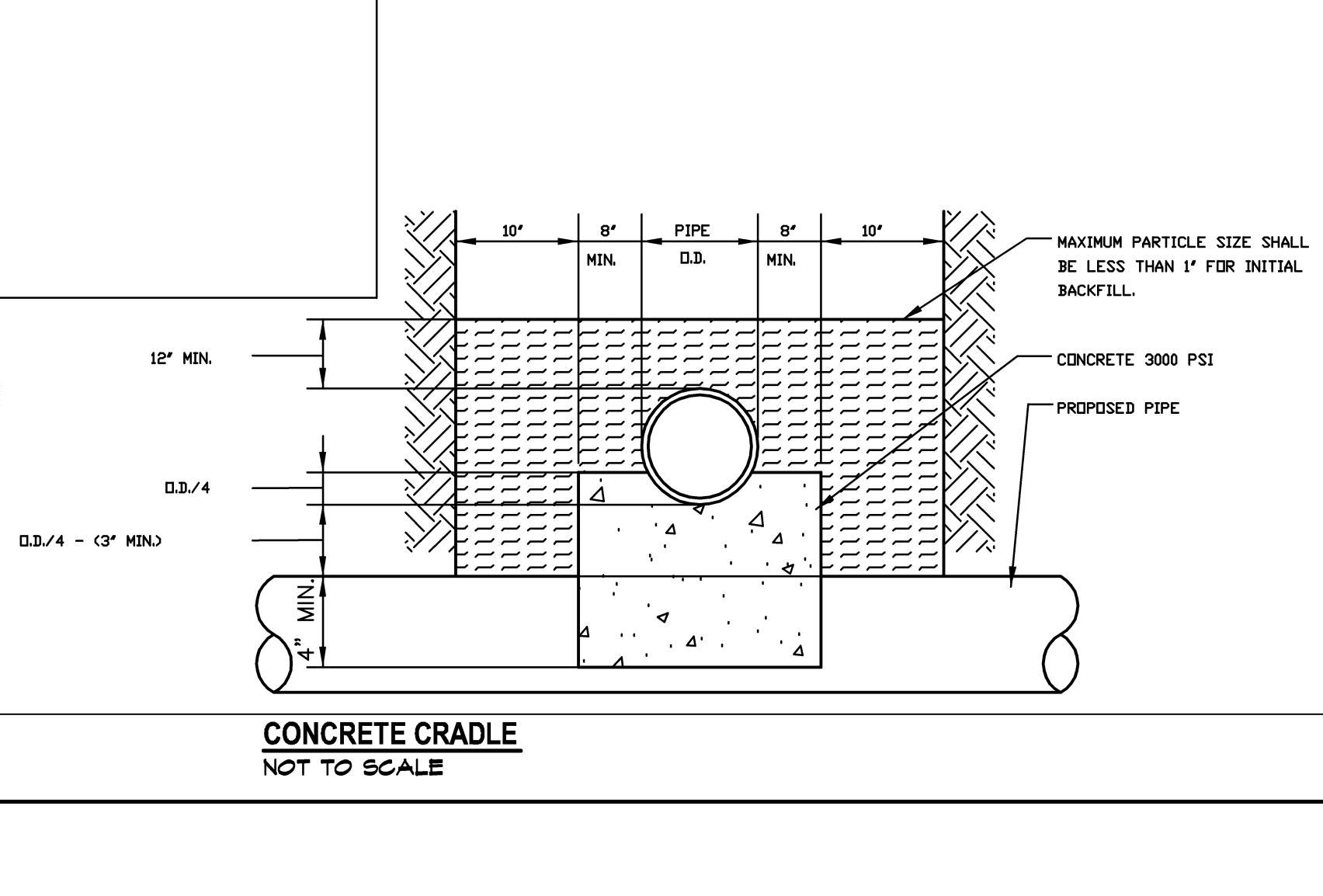
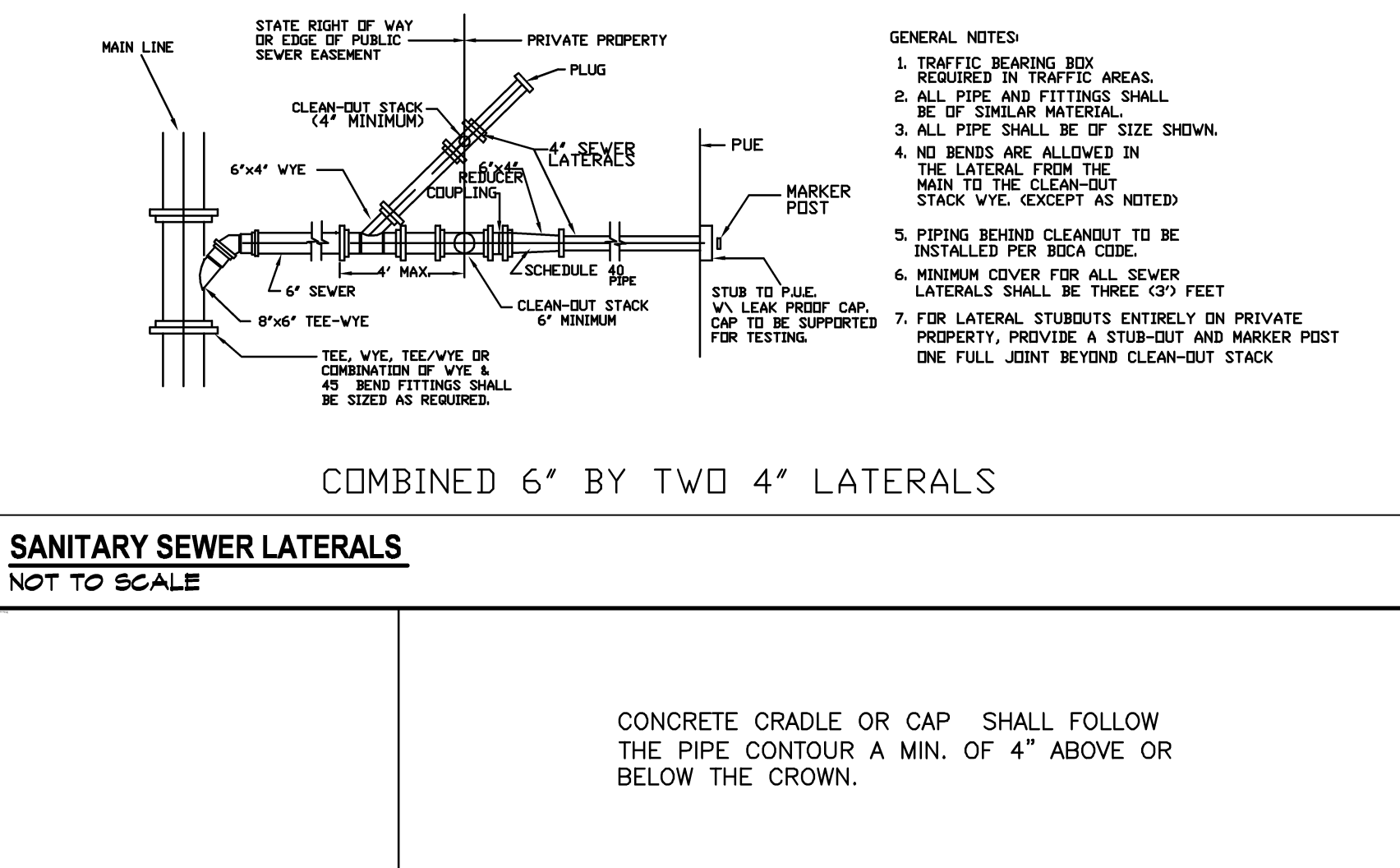
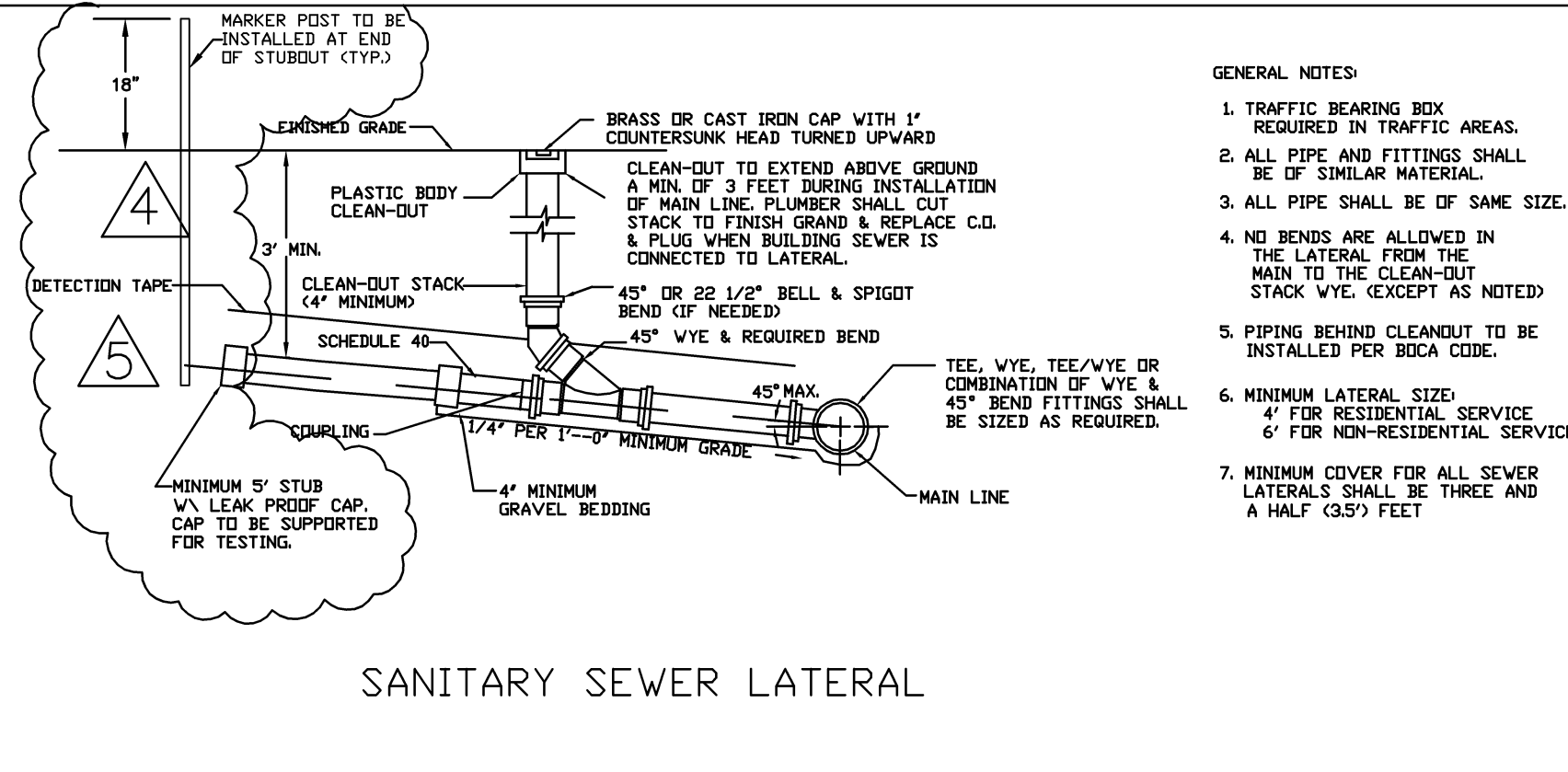
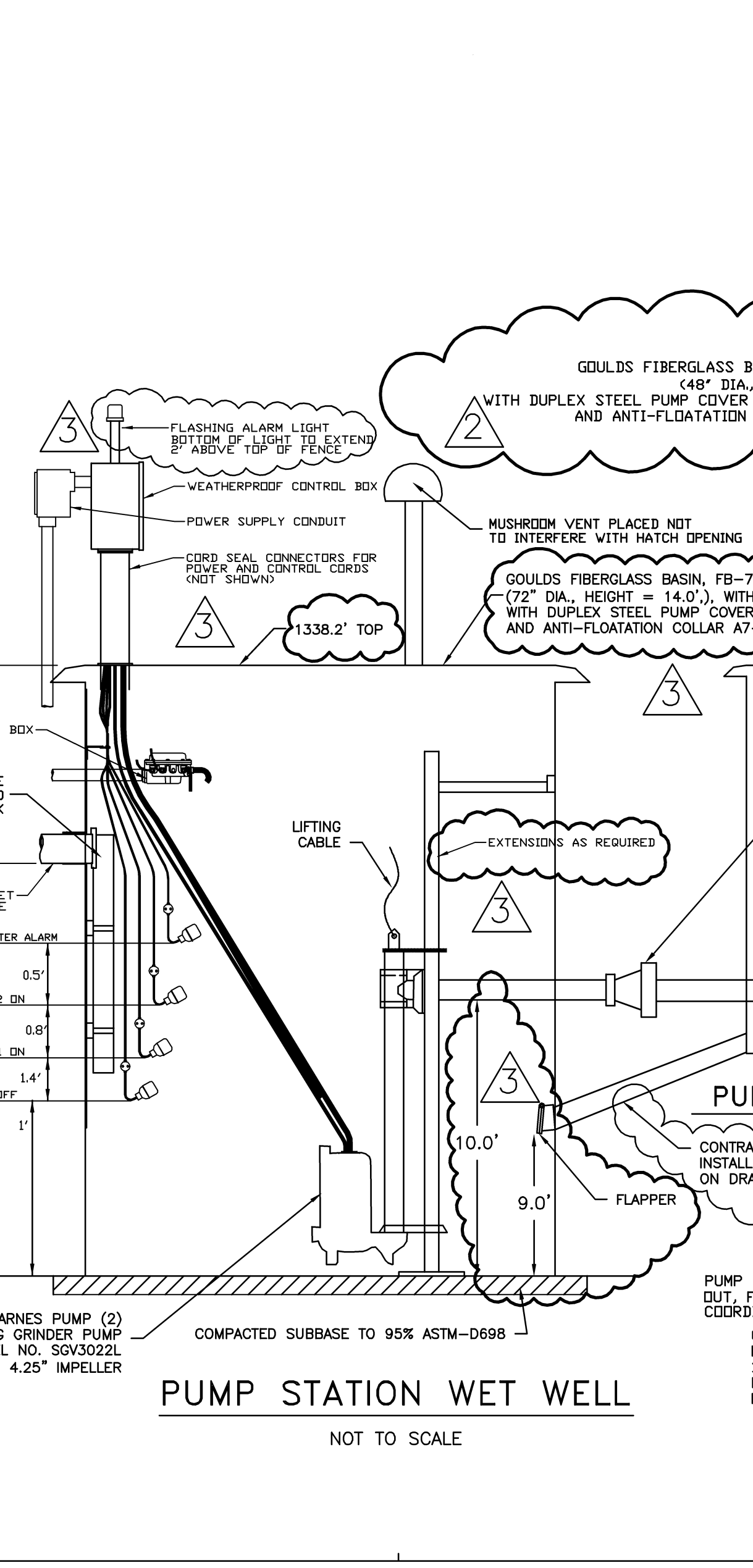
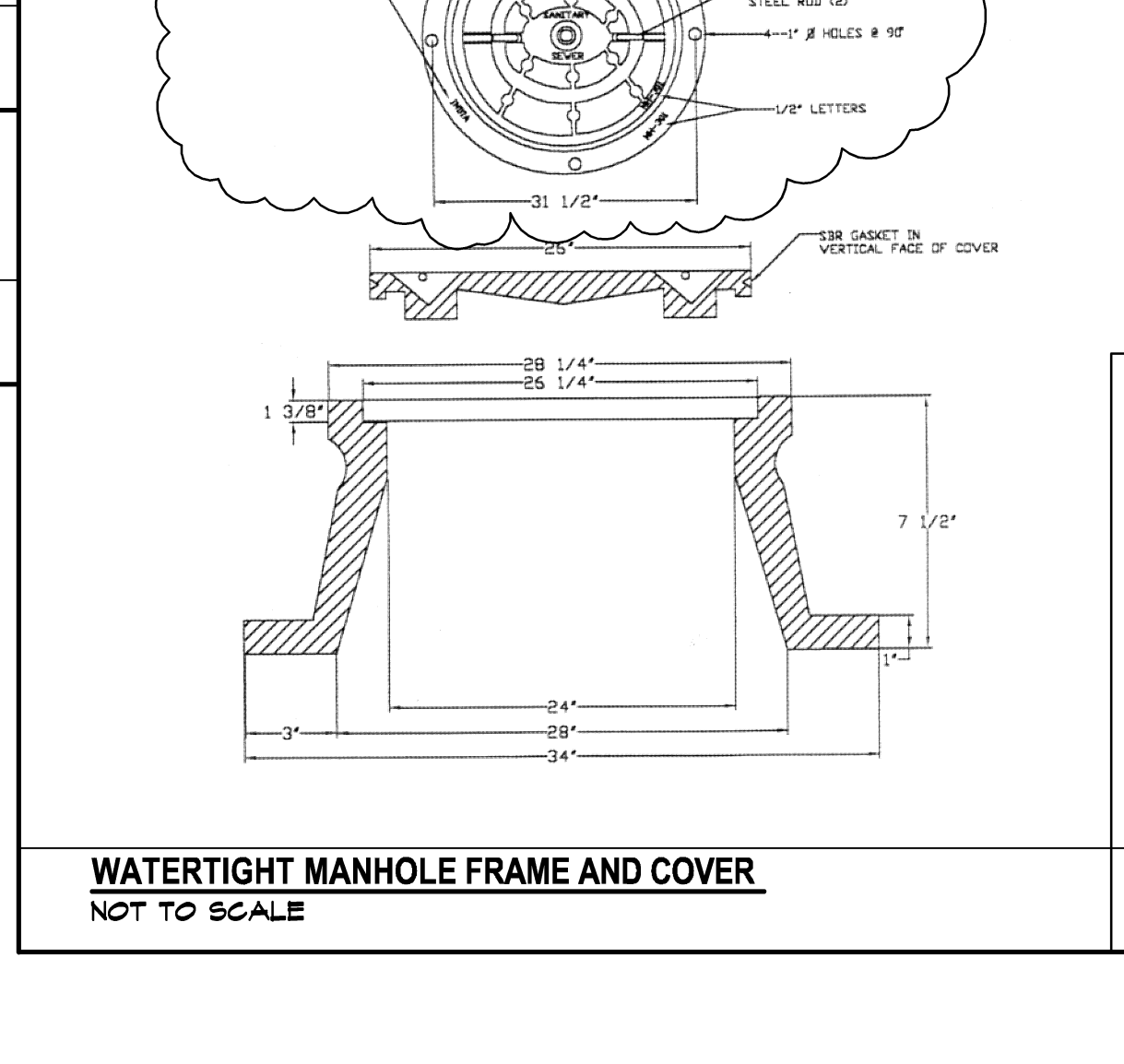
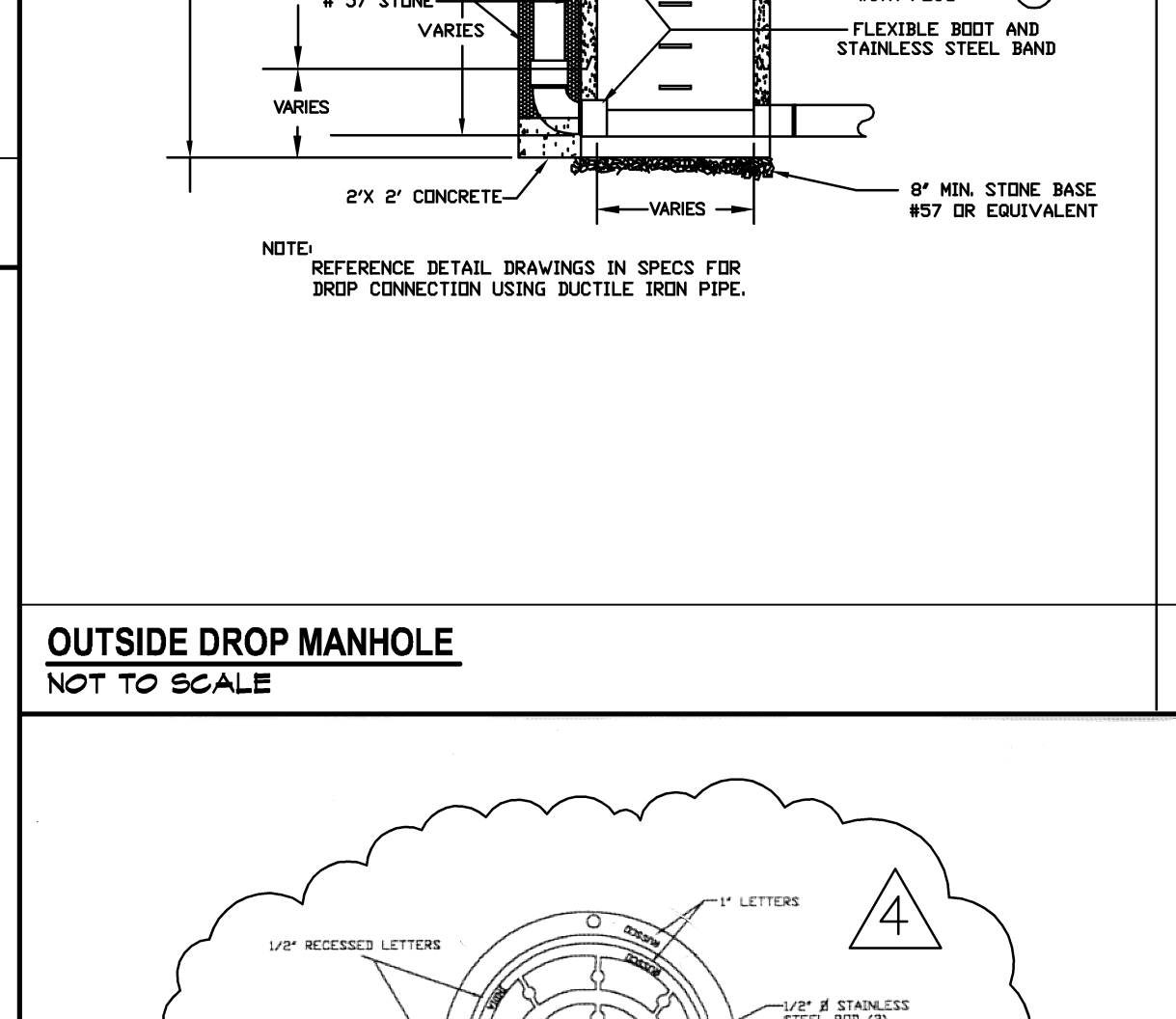
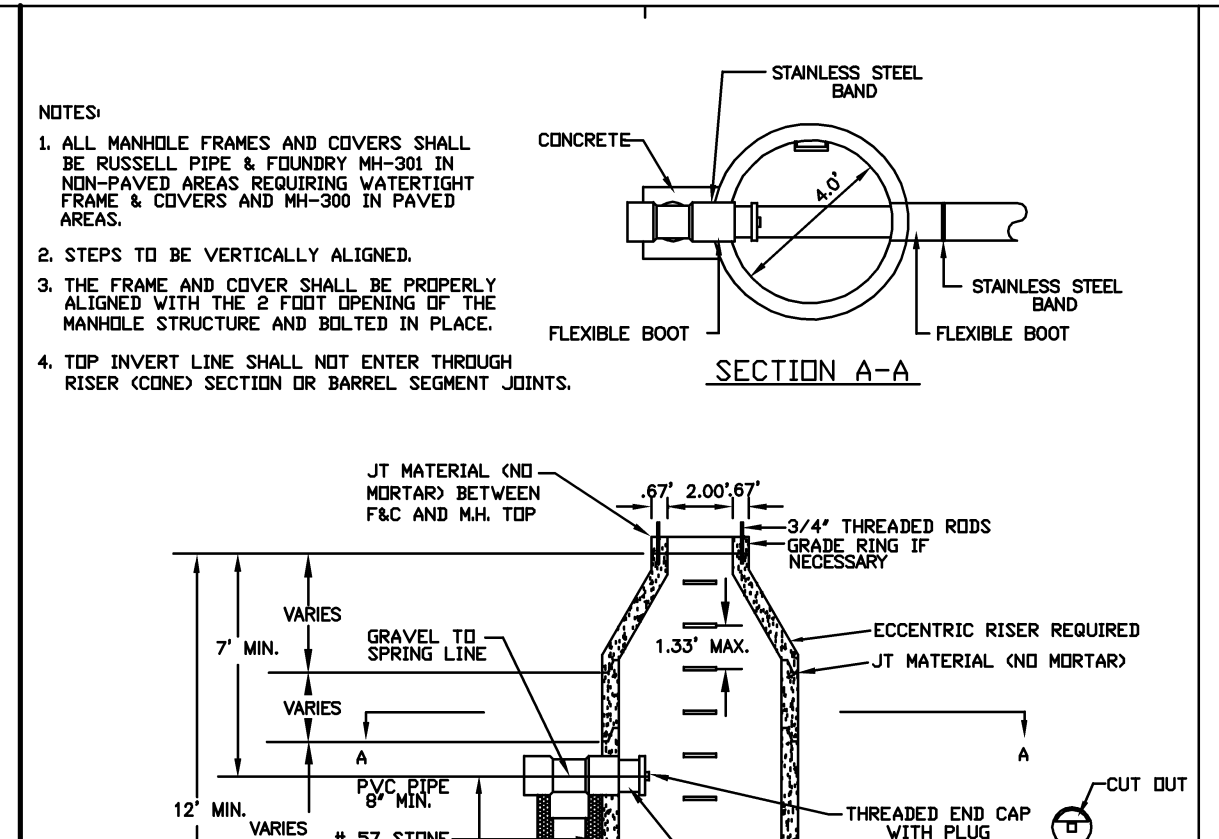
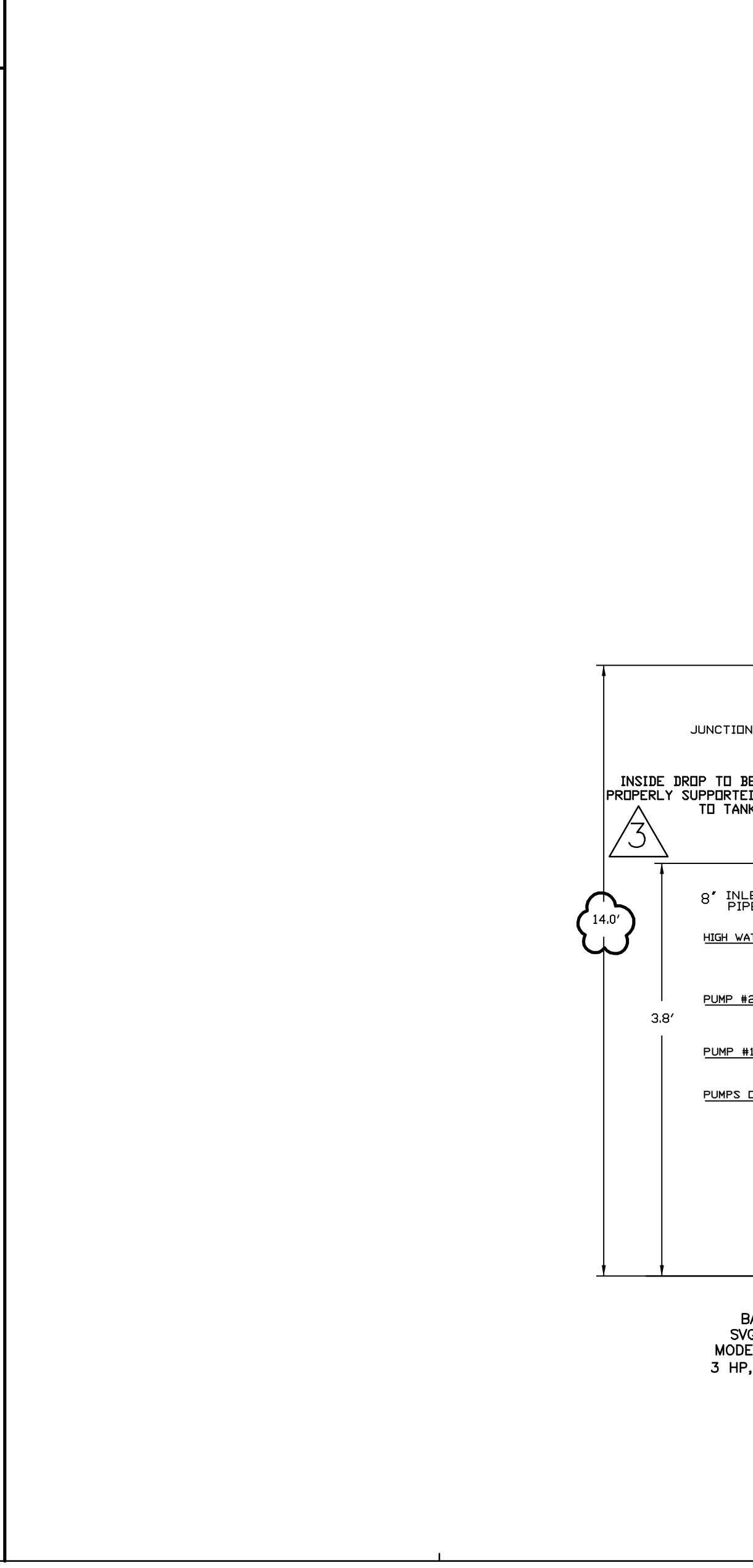
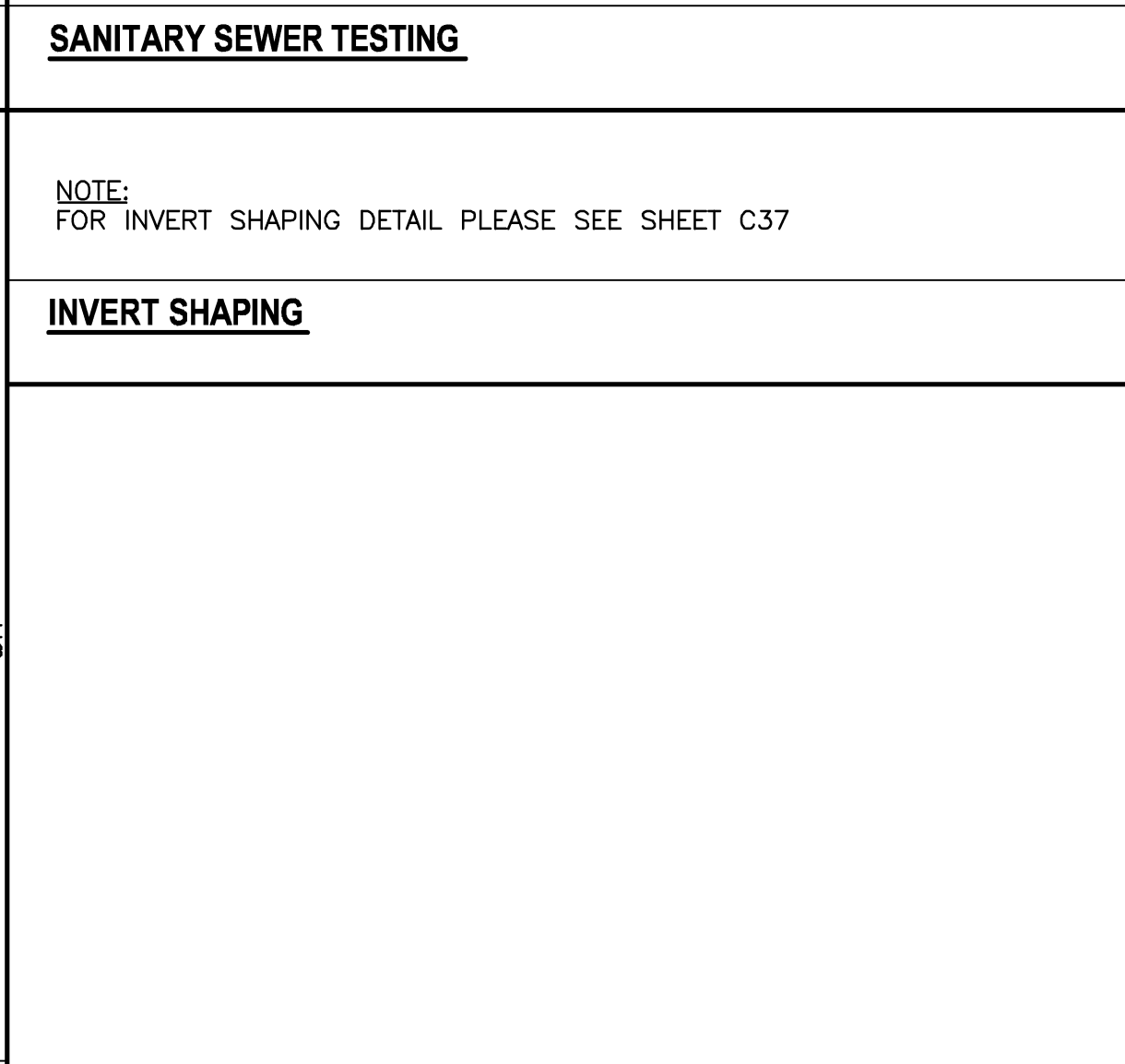
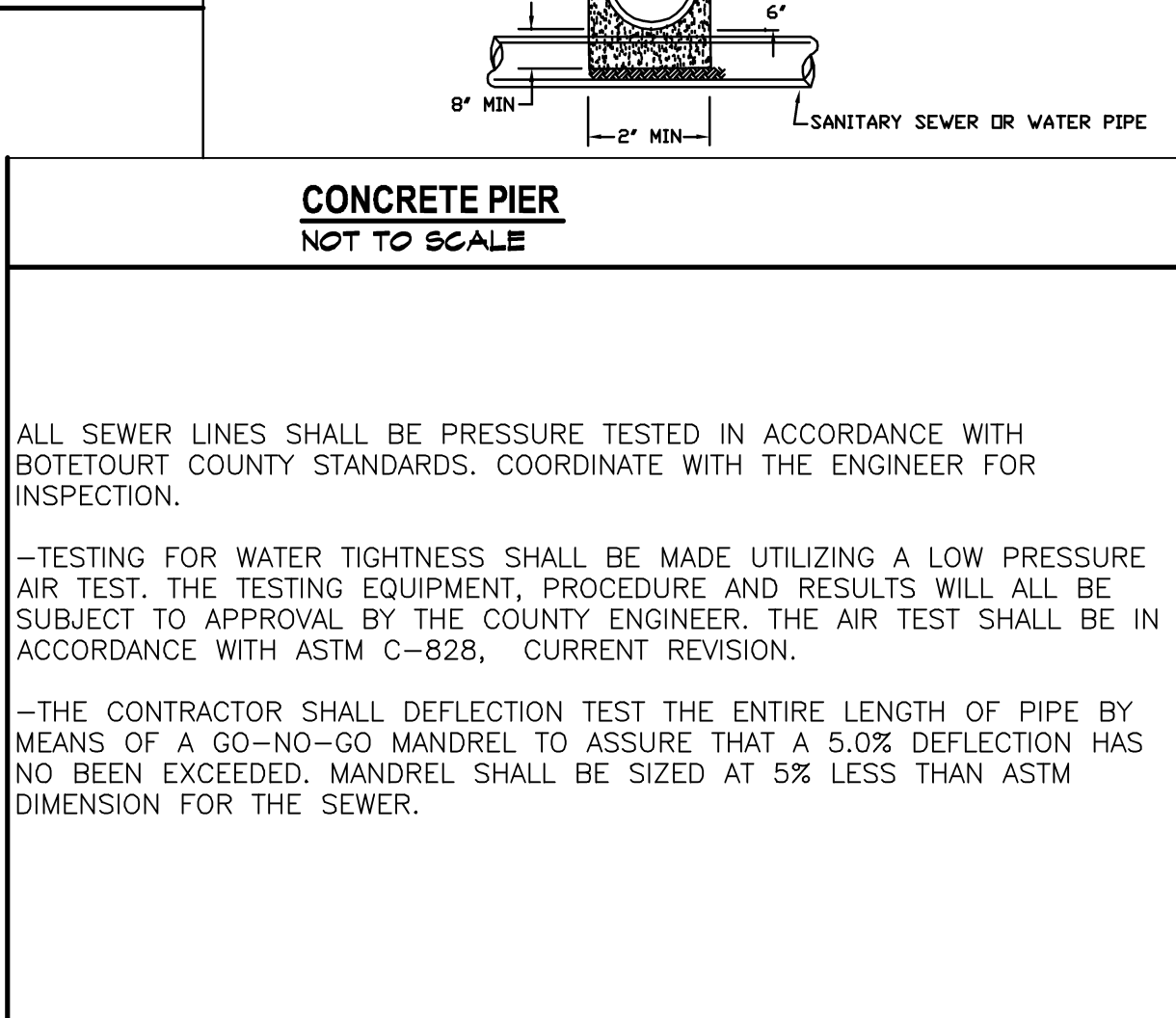
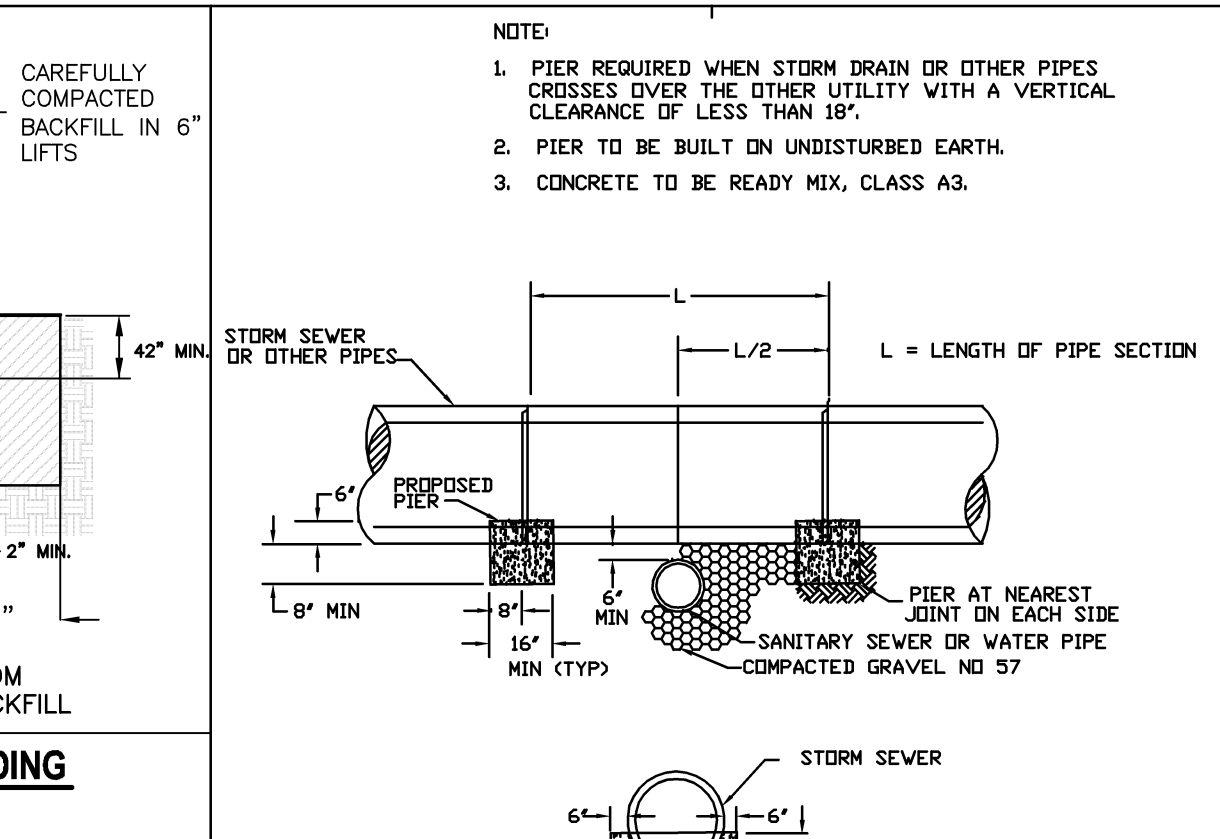
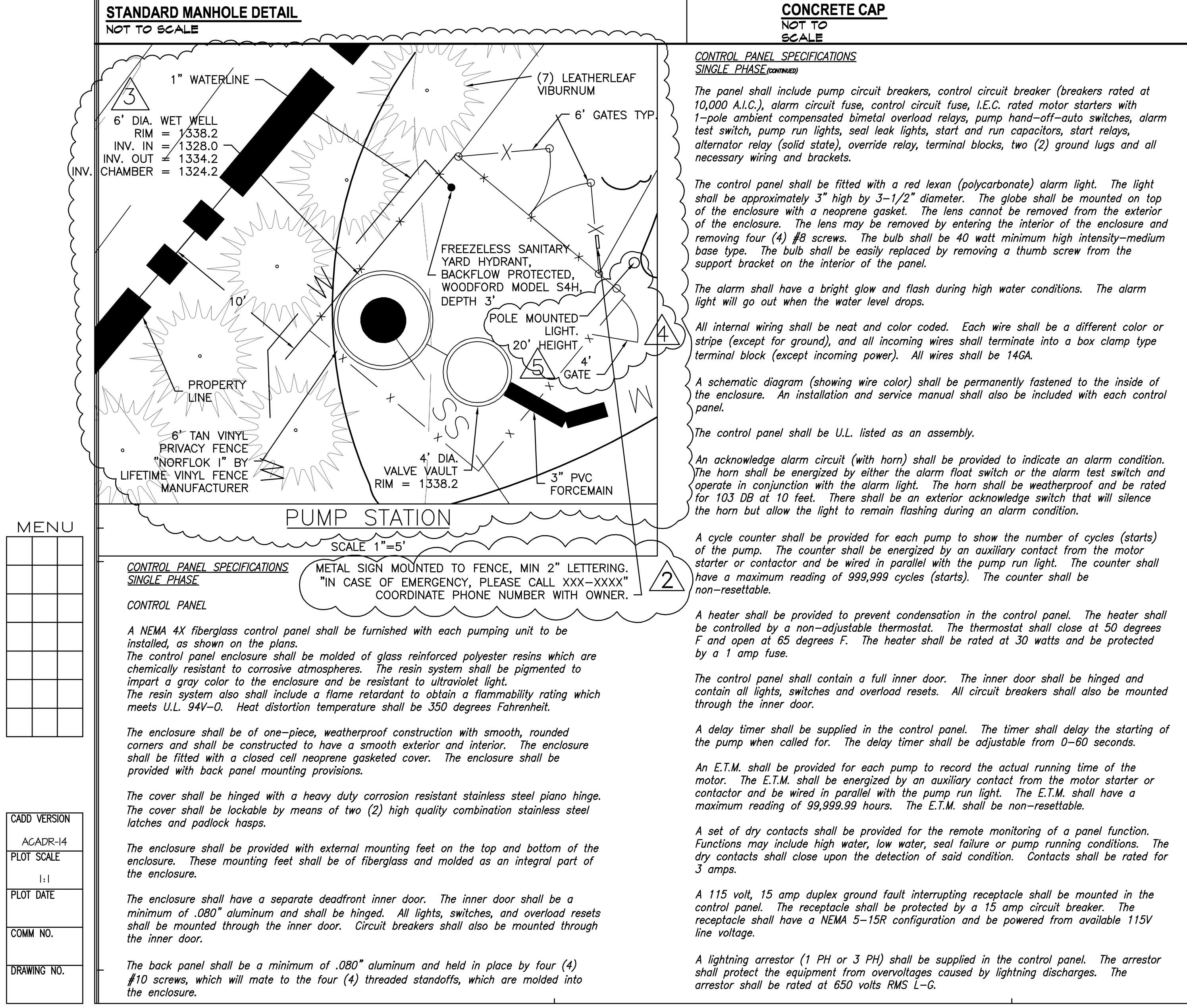
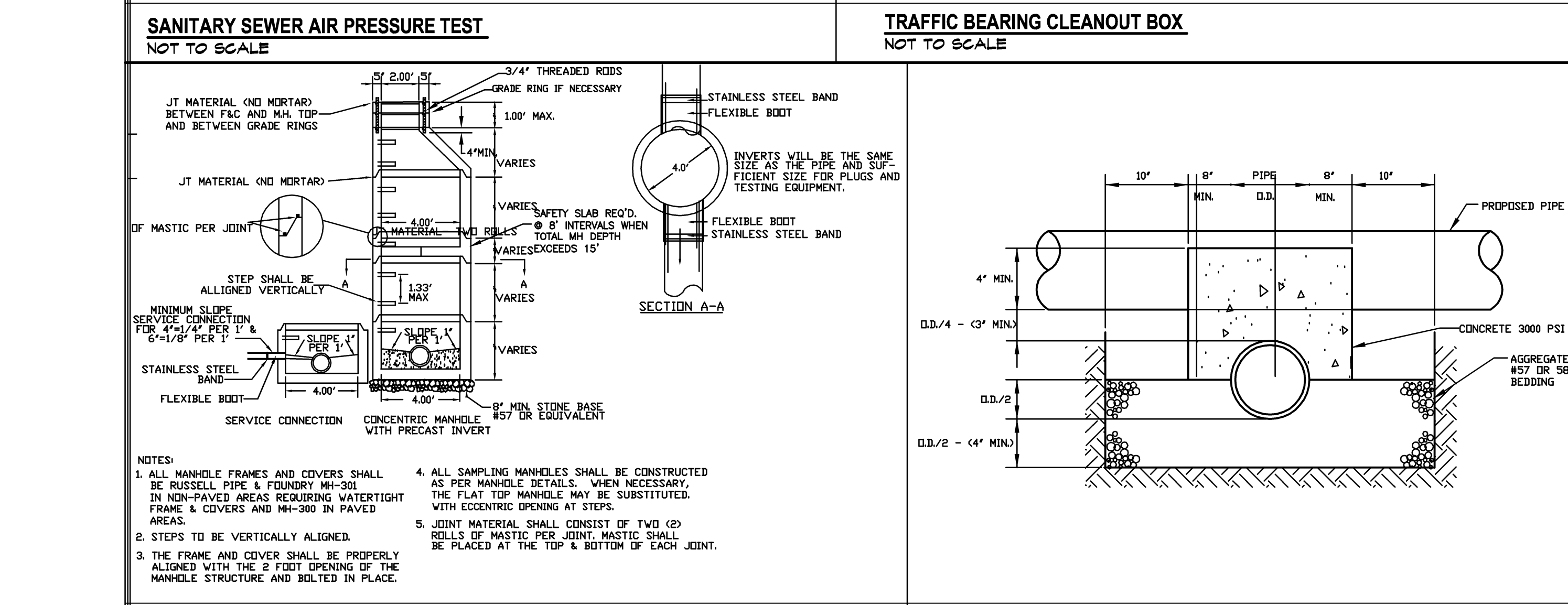


Specified Time for Length (L) Shown (minutes)													
Pipe Diameter (in.)	Min. Time (min.)	Length (ft.)	100 ft.	150 ft.	200 ft.	250 ft.	300 ft.	350 ft.	400 ft.	450 ft.			
3	3:46	597	380 L	3:46	3:46	3:46	3:46	3:46	3:46	3:46			
6	5:40	398	854 L	5:40	5:40	5:40	5:40	5:40	5:40	5:40			
8	7:34	298	1,520 L	7:34	7:34	7:34	7:34	7:34	7:34	7:34			
10	9:28	239	2,374 L	9:28	9:28	9:28	9:28	9:28	9:28	9:28			
12	11:20	199	3,418 L	11:20	11:20	11:20	11:20	11:20	11:20	11:20			
15	14:10	159	5,342 L	14:10	14:10	14:10	14:10	14:10	14:10	14:10			
18	17:00	133	7,662 L	17:00	17:00	17:00	17:00	17:00	17:00	17:00			
21	19:50	114	10,470 L	19:50	19:50	19:50	19:50	19:50	19:50	19:50			
24	22:40	99	13,674 L	22:40	22:40	22:40	22:40	22:40	22:40	22:40			
27	25:30	88	17,308 L	25:30	25:30	25:30	25:30	25:30	25:30	25:30			
30	28:20	80	21,366 L	28:20	28:20	28:20	28:20	28:20	28:20	28:20			
33	31:10	72	25,852 L	31:10	31:10	31:10	31:10	31:10	31:10	31:10			
36	34:00	66	30,768 L	34:00	34:00	34:00	34:00	34:00	34:00	34:00			

MINIMUM SPECIFIED TIME REQUIRED FOR A 1.0 PSIG PRESSURE DROP FOR SIZE AND LENGTH OF PIPE INDICATED FOR Q = 0.0015.



KEYPLAN

GENERAL NOTES:

1. TRAFFIC BEARING BOX REQUIRED IN TRAFFIC AREAS.
2. ALL PIPE AND FITTINGS SHALL BE OF SIMILAR MATERIAL.
3. ALL PIPE SHALL BE OF SAME SIZE.
4. NO BENDS ARE ALLOWED IN THE LATERAL FROM THE MAIN TO THE CLEAN-OUT STACK VTE. (EXCEPT AS NOTED)
5. PIPING BEHIND CLEANOUT TO BE INSTALLED PER BICA CODE.
6. MINIMUM LATERAL SIZE: 4" FOR RESIDENTIAL SERVICE, 6" FOR NON-RESIDENTIAL SERVICE.
7. MINIMUM COVER FOR ALL SEWER MATERIALS SHALL BE THREE AND A HALF (3.5) FEET.

ENGINEERING CONCEPTS, INC.

20 South Roanoke St.  
Fincastle, Virginia 24090  
540.473.1253 540.473.1254 (Fax)  
email: engineeringconcepts.com  
ECI PROJECT #02019

GENERAL NOTES

PROJECT TITLE

The Glebe

SFCS

SFCS Inc. • 305 South Jefferson Street  
Roanoke, Virginia 24011.2003  
540.344.6664 • Fax 540.343.6925  
www.sfcs.com

PROJECT DESIGNER : SFCS  
PROJECT ARCHITECT : SFCS  
PROJECT ENGINEER : ECI  
DRAWN BY : ECI  
CHECKED BY : ECI  
APPROVED BY : ECI

NO. REVISION DESCRIPTION DATE  
2 SANITARY SEWER REVISIONS 8/06/03  
3 PUMP STATION RELOCATION 10/14/03  
4 REVISIONS PER BOT. CO. 11/12/03  
5 REVISIONS PER BOT. CO. 12/11/03

DRAWING TITLE  
SANITARY SEWER  
NOTES AND DETAILS

COMM. NO. 47115.00 DATE 11/12/03  
DRAWING SHEET

29 OF 43