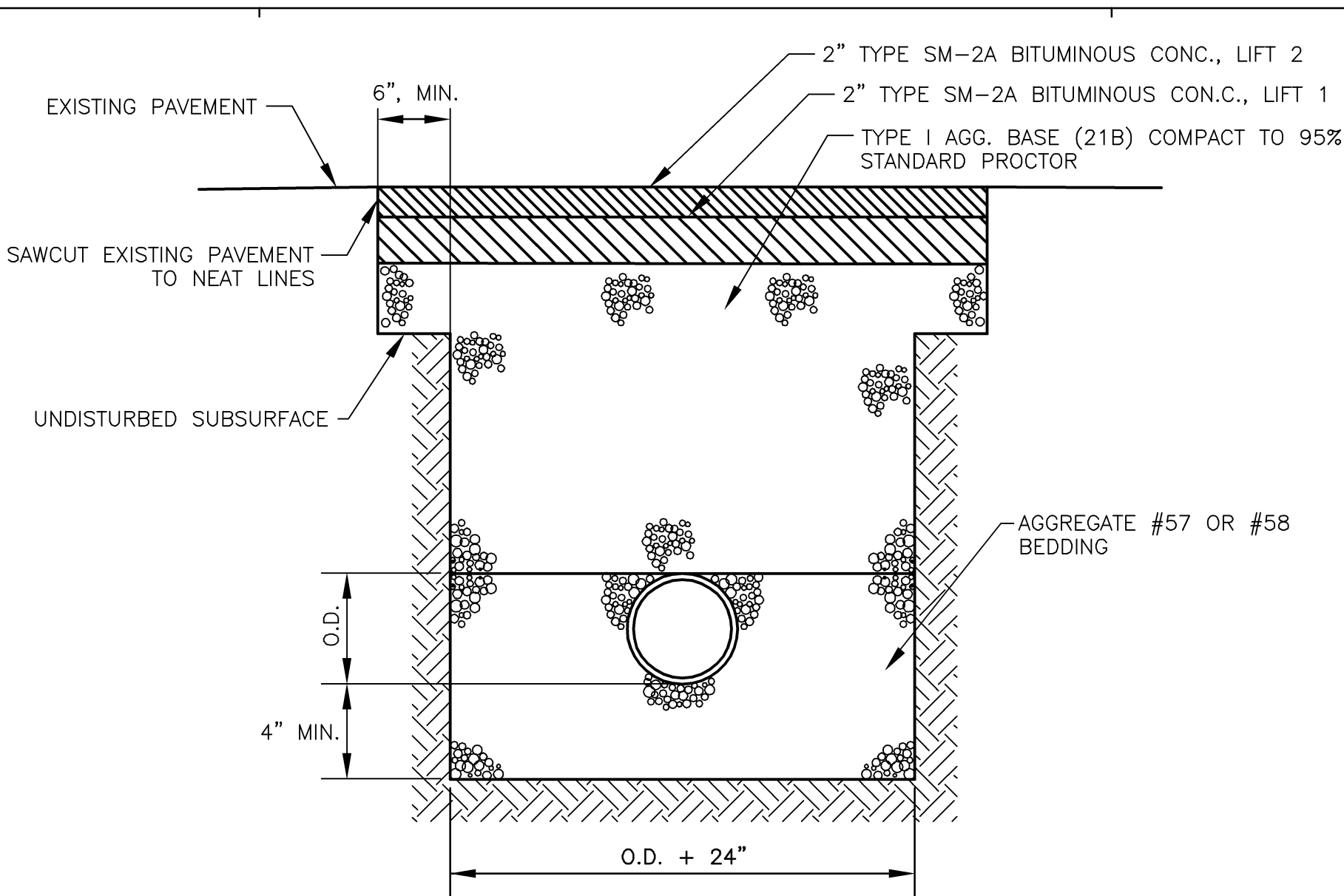
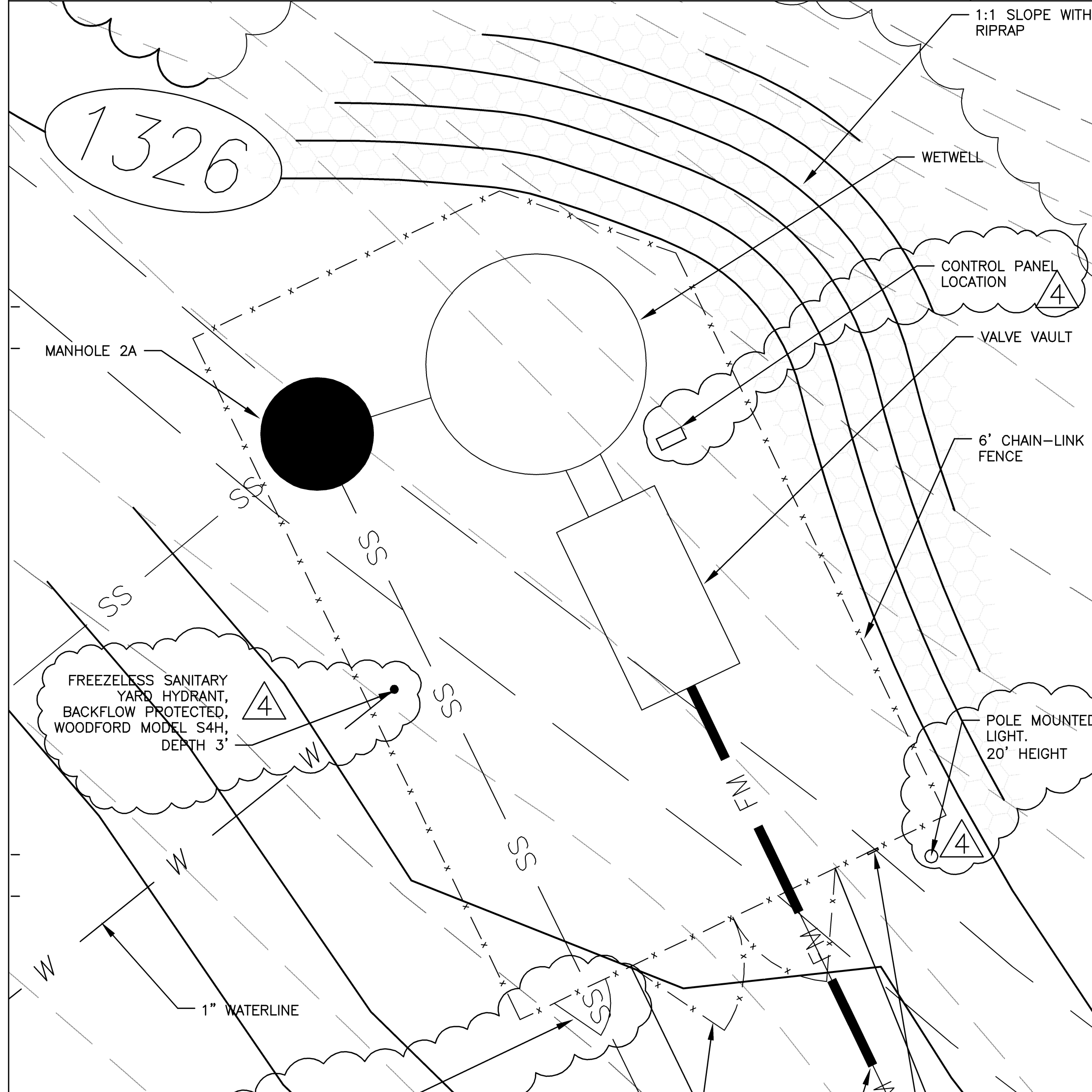


2 TREE PROTECTION DETAIL

N.T.S.

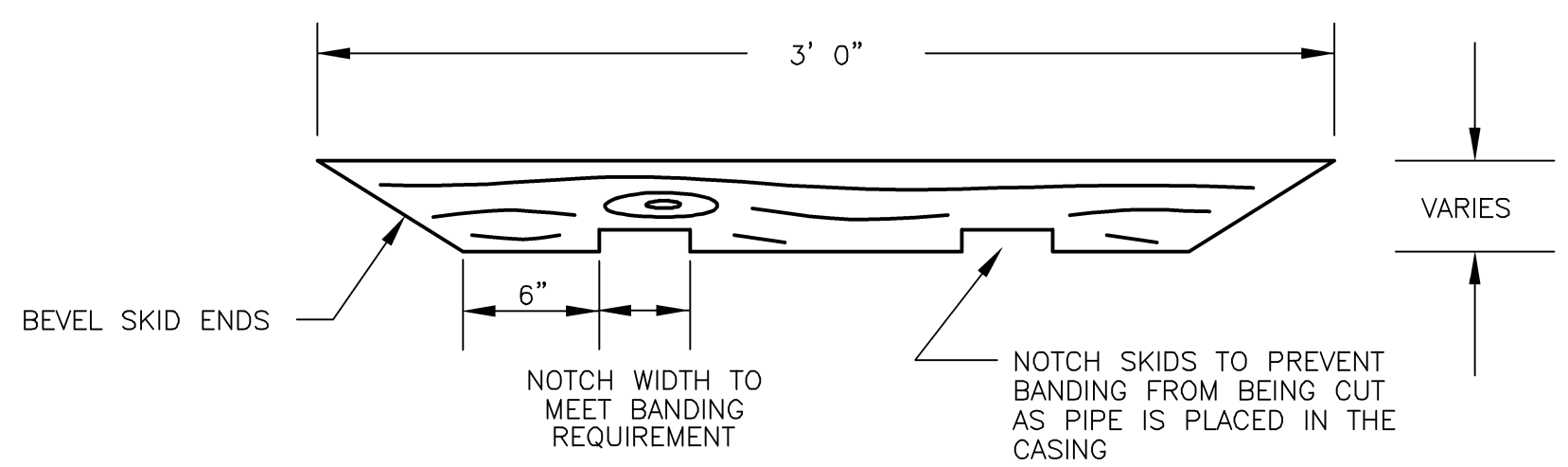
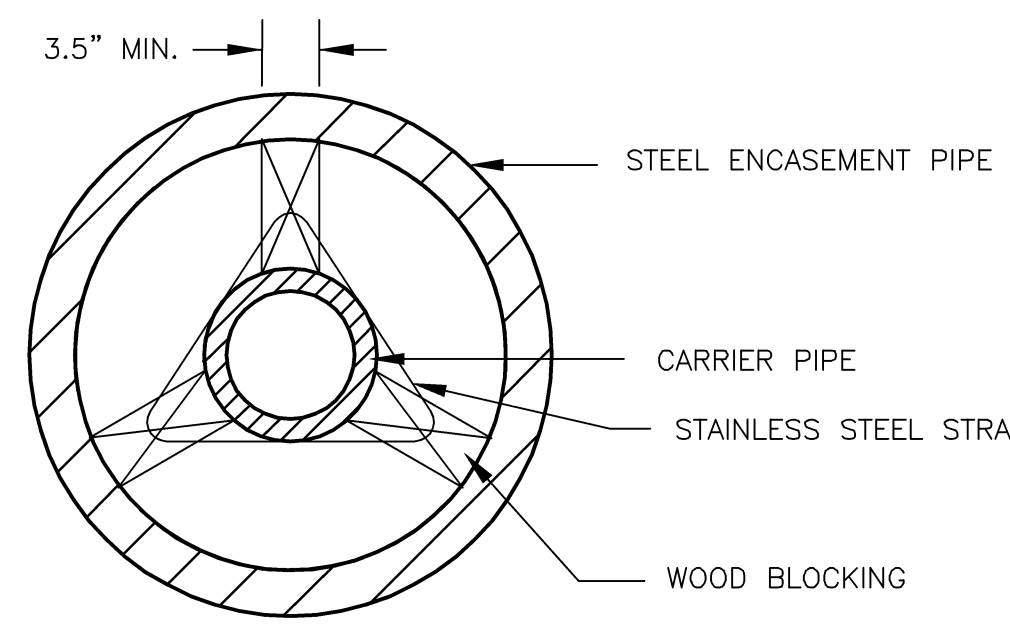


TYPICAL PAVEMENT OPEN CUT AND PATCH DETAIL



METAL SIGN MOUNTED TO FENCE, MIN 2" LETTERING. "IN CASE OF EMERGENCY, PLEASE CALL XXX-XXXX" COORDINATE PHONE NUMBER WITH OWNER.

- NOTES:
1. MAIN PUMP STATION SHALL CONFORM TO BOTETOURT COUNTY PUMP STATION STANDARDS.
 2. MAIN PUMP STATION IS A PACKAGED SYSTEM, COORDINATE PUMPS STATION'S PUMPS, CONTROLS, LIFTS, FLOATS, TANKS, AND VALVES WITH BEN HOUSEKNECT OF THE CLEAR FLOW COMPANY, PHONE 540-949-8389.
 3. SEE TECHNICAL SPECIFICATION SECTION 15446 - MAIN PUMP STATION.
 4. CONTRACTOR SHALL PROVIDE STARTUP SERVICES, OPERATION AND MAINTENANCE MANUAL, AND 8 HOURS OF ON-SITE TRAINING.
 5. A 150-WATT HIGH SODIUM PRESSURE LIGHT SHALL BE INSTALLED SO AS TO ILLUMINATE THE PUMP STATION AREA, SO AS TO GLARE DIRECTLY ONTO THE PUMP STATION CONTROL PANEL. THE FIXTURE SHALL BE OPERATED BY A CIRCUIT BREAKER IN THE MAIN CONTROL PANEL.
 6. CONTRACTOR SHALL CONNECT PUMP STATION CONTROLS TO BACKUP GENERATOR IN MAIN BUILDING. SEE ELECTRICAL PLANS FOR DETAILS.
 7. PUMP STATION SHALL MEET ALL REQUIREMENTS FOR CLASS II RELIABILITY AS REQUIRED BY 12 VAC 5-581, PART III, ARTICLE 2 OF THE VIRGINIA SEWAGE COLLECTION AND TREATMENT REGULATIONS (SCAT).

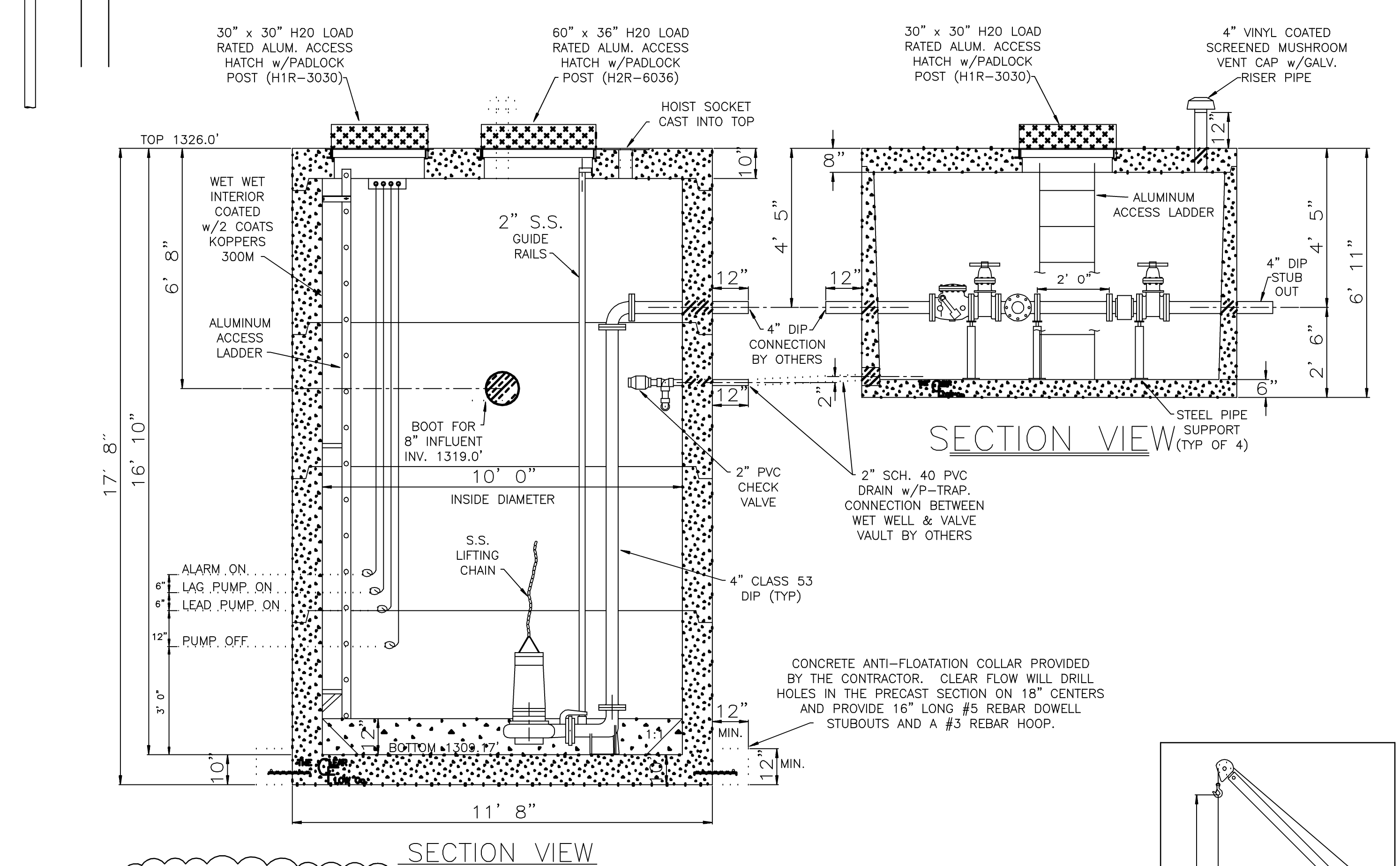
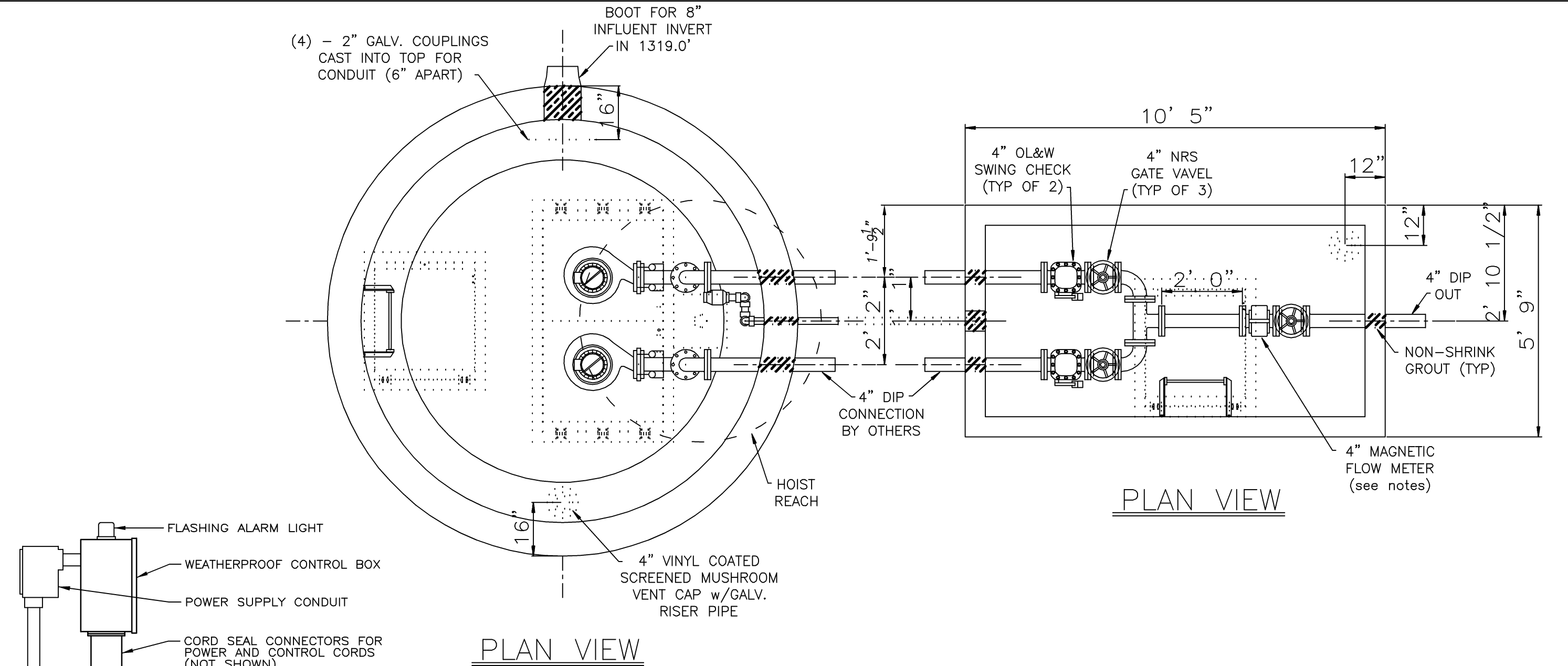
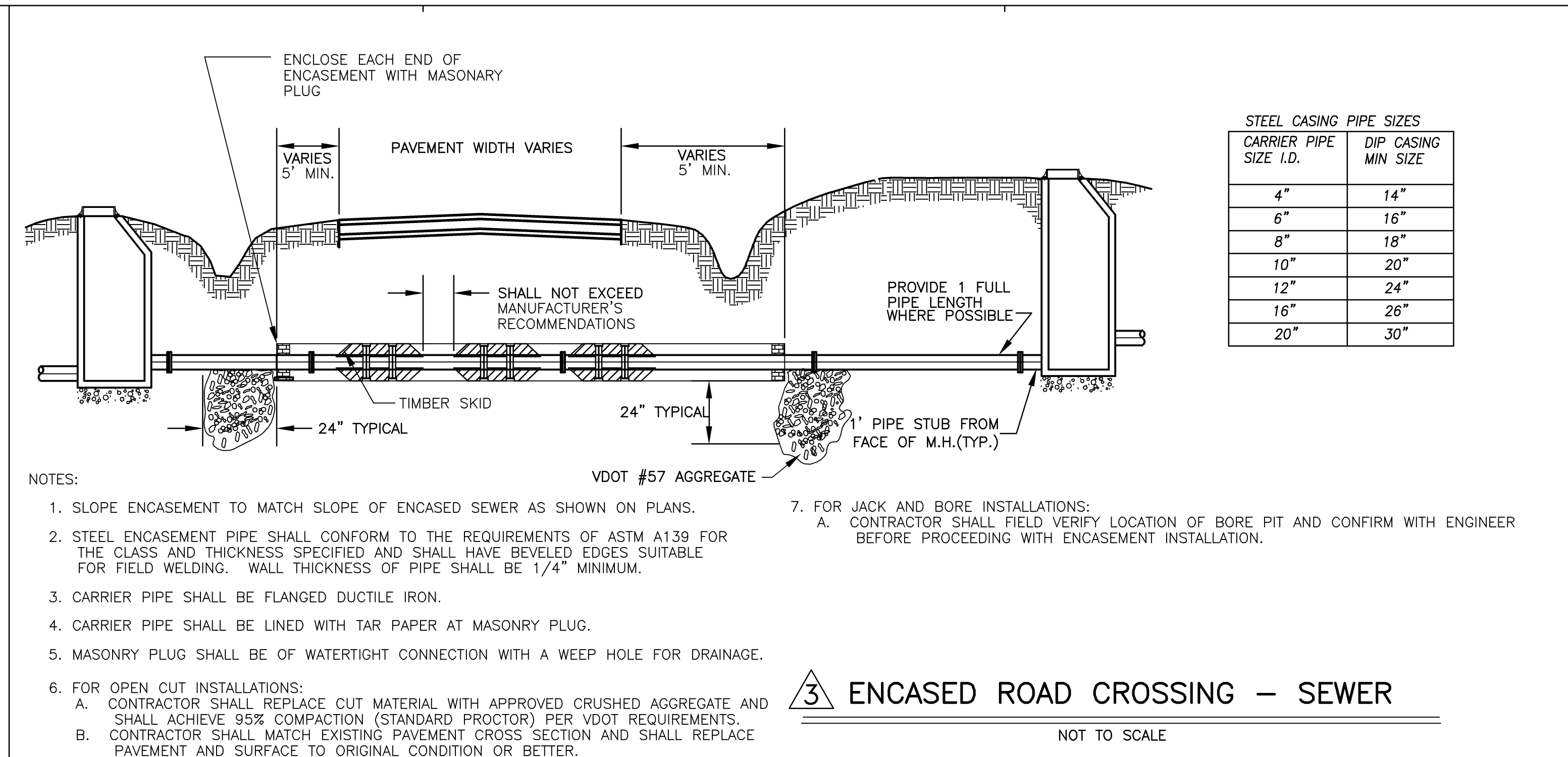


3 TIMBER SKID

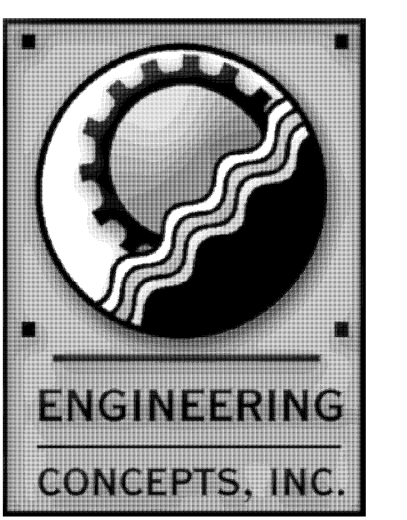
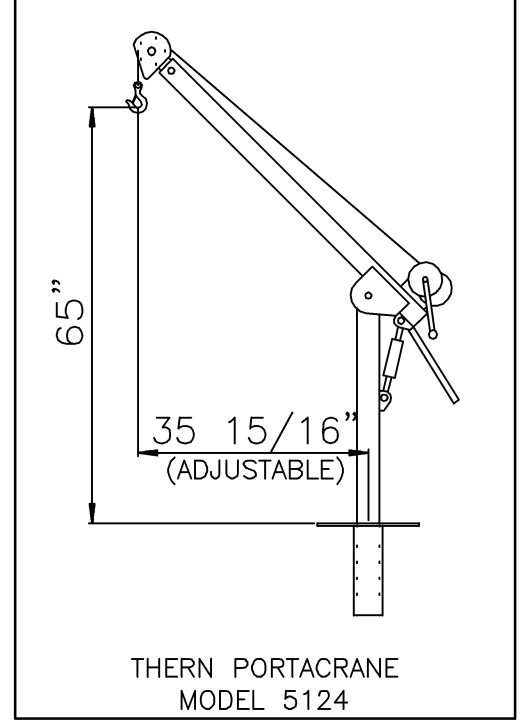
NOT TO SCALE

SOURCE: 1993 VDOT ROAD AND BRIDGE STANDARDS SEC. 1404.01

NOTE: CONTRACTOR SHALL SUBMIT "SPIDER" SHOP DRAWINGS TO BOTETOURT COUNTY PRIOR TO INSTALLATION.



- NOTES:
1. CLEAR FLOW PUMP STATION SHIPPED IN SECTIONS TO BE ASSEMBLED BY THE CONTRACTOR. HEAVIEST LIFT APPROXIMATELY 35,000 LBS. VALVE VAULT SHIPPED ASSEMBLED WEIGHING APPROXIMATELY 26,000 LBS.
 2. DUPLEX FLYGT PUMPS MODEL CP-3152 WITH 187mm IMPELLER (23 HP; 480 VOLT; 3 PHASE)
 3. 4" METER TO BE SIEMENS-SITRANS FM MAGNETIC FLOW SENSOR MODEL #7MES722-1IC12-0BB0-ZB11 (FLANGED; NO GROUNDING RINGS; NO INTERNAL ELECTRONICS) EXTERNAL ELECTRONICS MODULE SITRANS FM INTERMAG 2 PROVIDED FOR MOUNTING AT THE CONTROL PANEL. FLOW METER SHALL DISPLAY INSTANTANEOUS FLOW RATE AND TOTAL FLOW
 4. CONTROL PANEL SHIPPED LOOSE FOR ON-SITE INSTALLATION AND ELECTRICAL HOOK-UP BY OTHERS.
 5. ALL CONNECTIONS BETWEEN THE WET WELL AND VALVE VAULT ARE THE RESPONSIBILITY OF THE CONTRACTOR.
 6. CONCRETE ANTI-FLOTATION COLLAR POURED ON-SITE BY THE CONTRACTOR.
 7. CONTRACTOR TO VERIFY ALL DIMENSIONS PRIOR TO RELEASE FOR PRODUCTION.



20 South Roanoke St.
Fincastle, Virginia 24090
540.473.1253 540.473.1254(Fax)
email@engineeringconcepts.com
ECI PROJECT #02019

GENERAL NOTES



PROJECT TITLE



SFCs Architecture
Engineering
Planning
Interiors

SFCs Inc. • 305 South Jefferson Street
Roanoke, Virginia 24011.2003
540.344.6664 • Fax 540.343.6925
www.sfcsc.com

PROJECT DESIGNER	:	SFCs
PROJECT ARCHITECT	:	SFCs
PROJECT ENGINEER	:	ECI
DRAWN BY	:	ECI
CHECKED BY	:	ECI
APPROVED BY	:	ECI
NO.	REVISION DESCRIPTION	DATE
2	DETAIL ADDITIONS	08/22/03
3	DETAIL ADDITIONS PER BOT. CO.	09/4/03
4	REVISIONS PER BOT. CO.	11/12/03
5	REVISIONS PER BOT. CO.	12/11/03

DRAWING TITLE
**MAIN SANITARY
SEWER PUMP
STATION**

COMM. NO.	47115.00	DATE	11/12/03
DRAWING		SHEET	

C39