

TABLE II-1 FINE AGGREGATE

GRADING	3/8	NO. 4	NO. 8	NO. 16	NO. 30	NO. 50	NO. 100
A	MIN 100	97+/-3	90+/-10	67+/-18	42+/-17	17+/-	MAX 10
B	MIN 100	97+/-3					MAX 10
C	MIN 100	97+/-					MAX 25

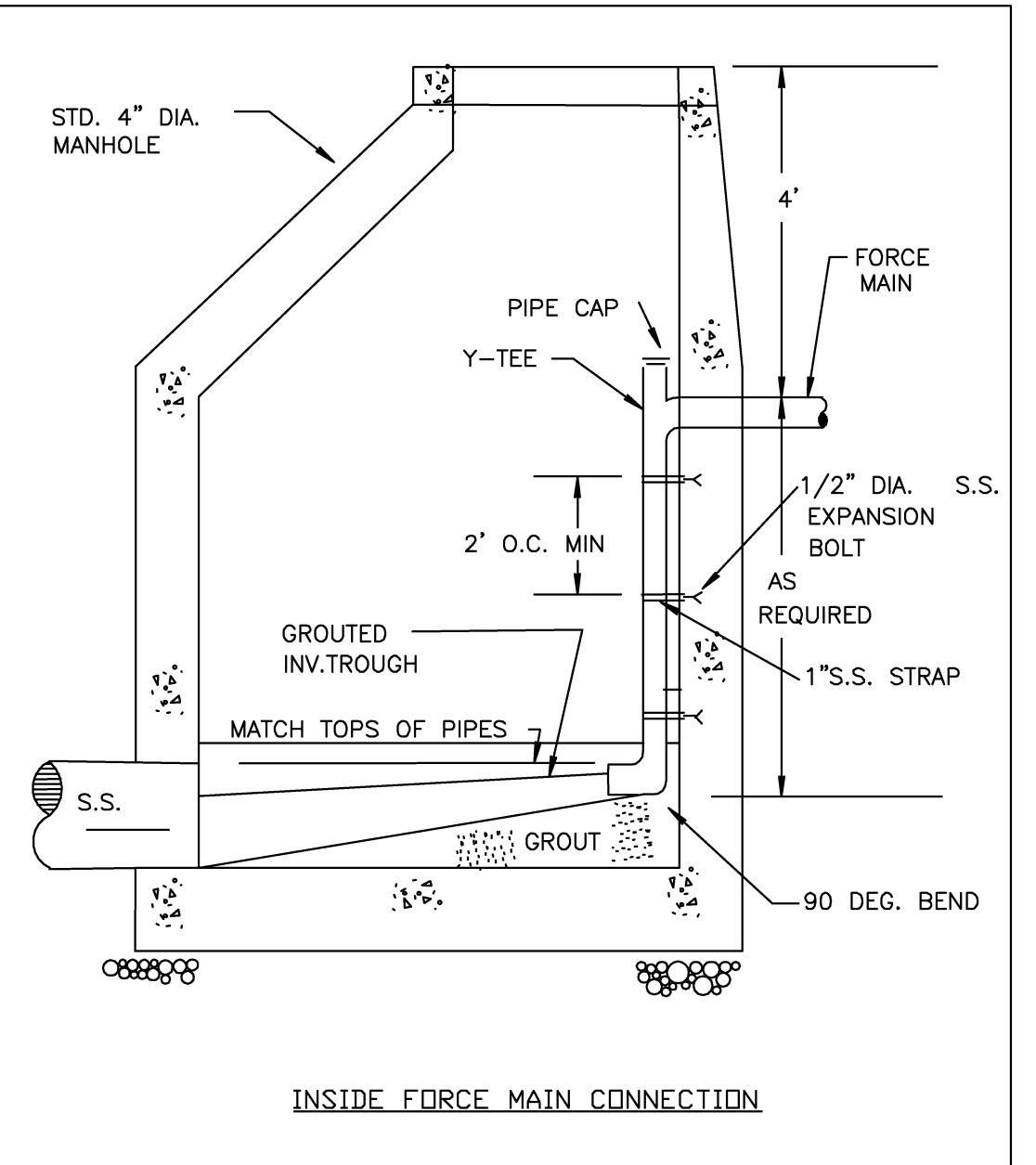
* In inches, except where otherwise indicated. Numbered sieves are those of the U.S. Standard Sieve Series

FINE AGGREGATE

EQUIVALENT PSI	HEIGHT OF GROUND WATER ABOVE PIPE INV. (FT.)
0.43	1
0.87	2
1.30	3
1.73	4
2.17	5
2.60	6
3.03	7
3.47	8
3.90	9
4.34	10
4.77	11
4.98	11.5

For anything above 11.5 VF, allow maximum 5.0 PSI.

AIR TESTING BACK PRESSURE EQUIVALENCY TABLE



DATE: 11/12/09

REVISIONS

PIERSON ENGINEERING & SURVEYING

P.O. BOX 311
1324 ROANOKE ROAD
DALEVILLE, VA 24083

(540) 966-3027 TEL
(540) 966-5906 FAX
e-mail: rpierson@bnet.net

DEVELOPMENT PLANS FOR
SANTILLANE SUBDIVISION
BOTETOURT COUNTY, VIRGINIA

SEWER DETAILS

