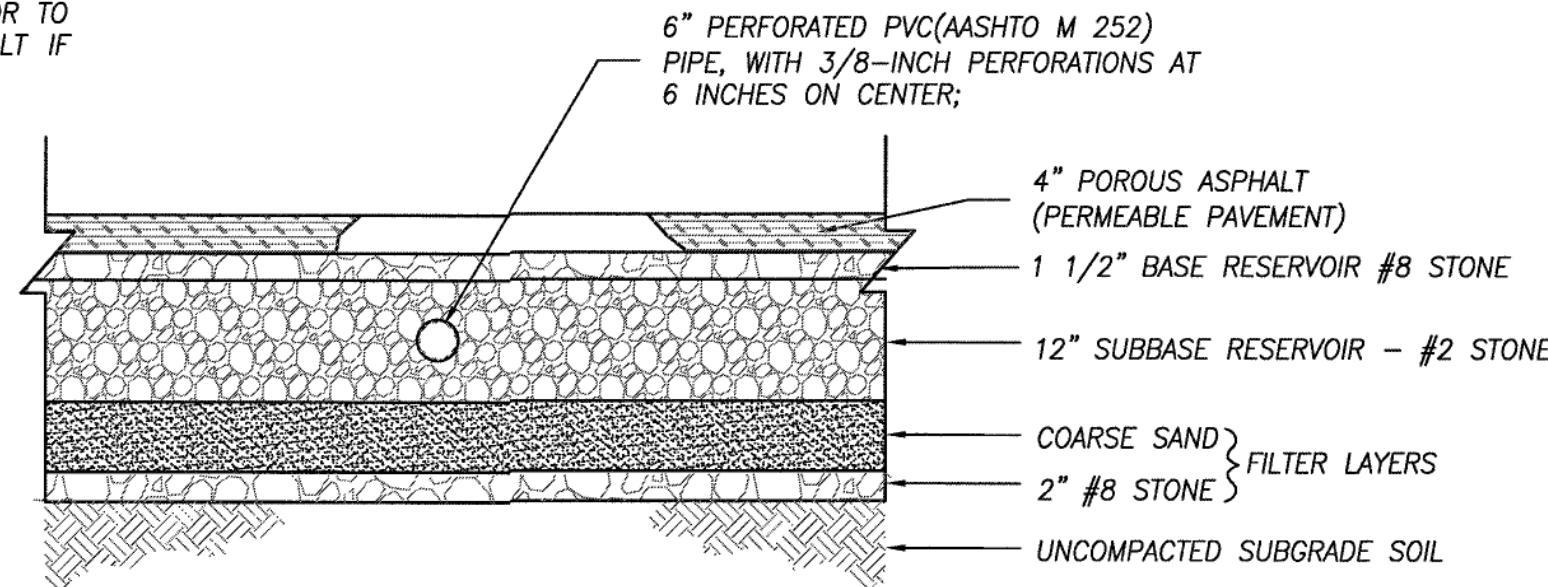
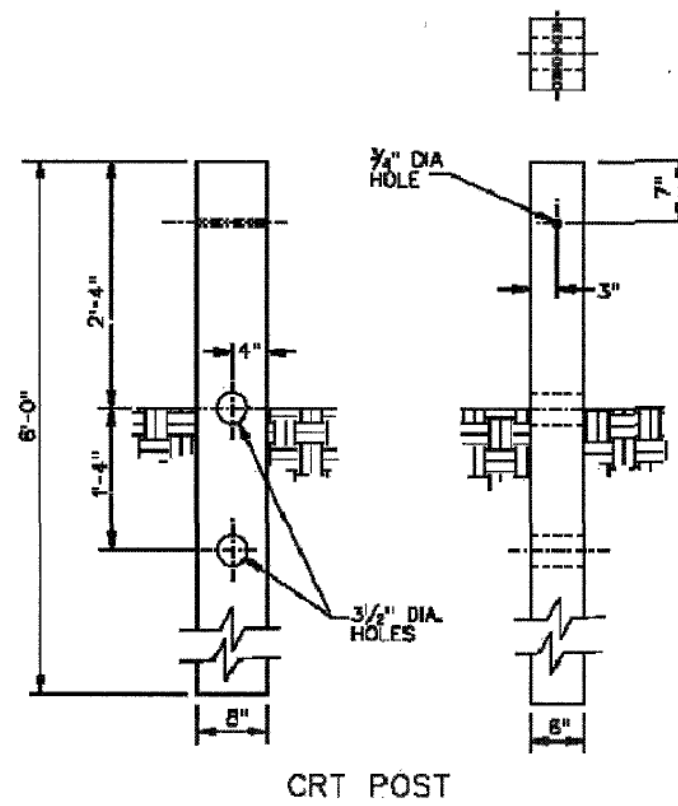
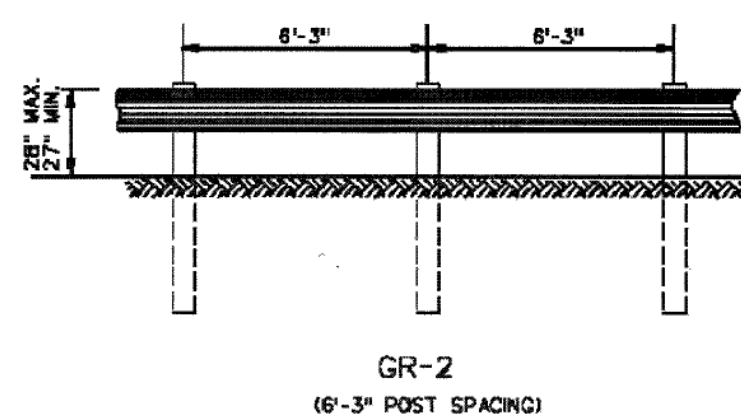
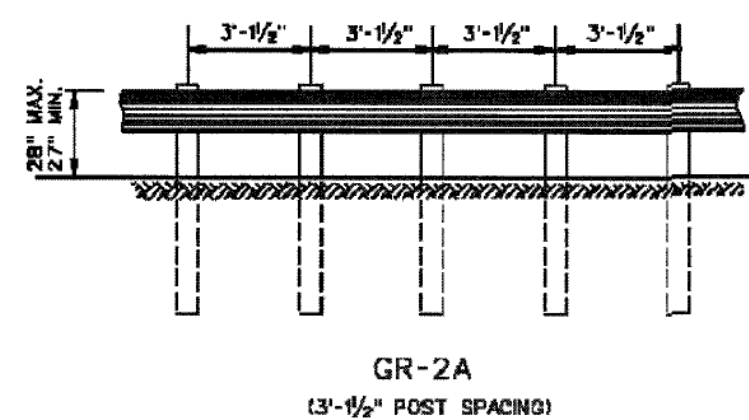


\* PAVEMENT DESIGN BASED ON A CBR OF 6 OR GREATER. NOTIFY THE ENGINEER PRIOR TO PLACEMENT OF THE ASPHALT IF LESS THAN SPECIFIED.

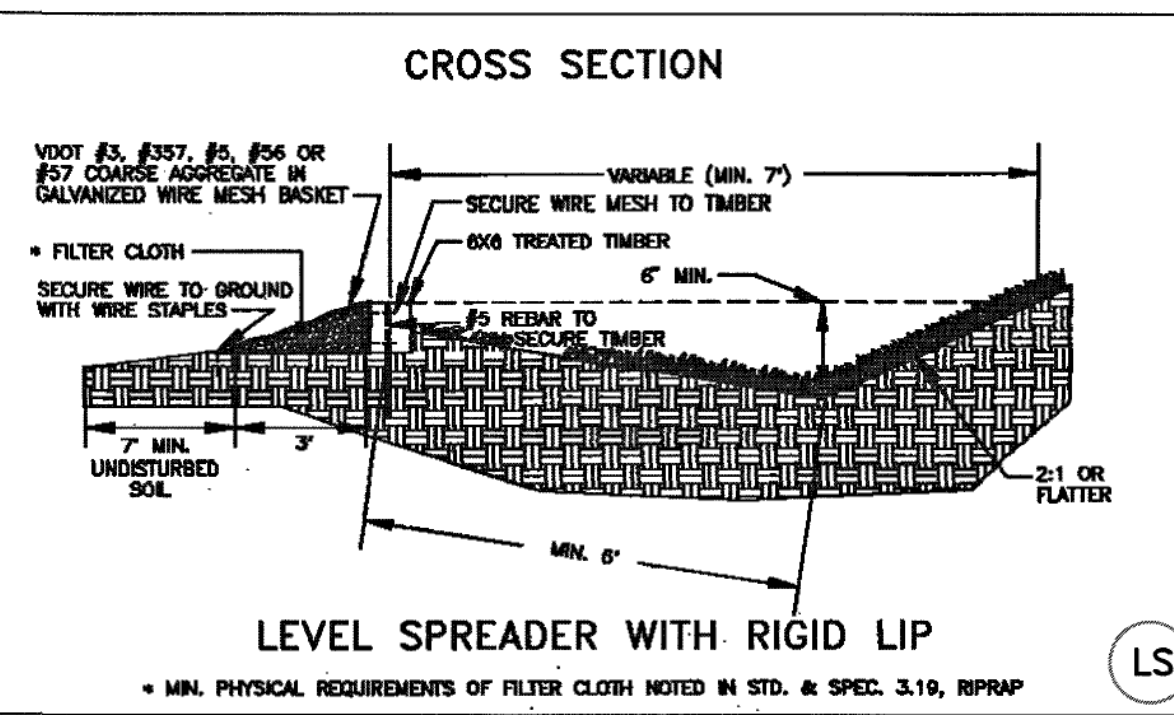
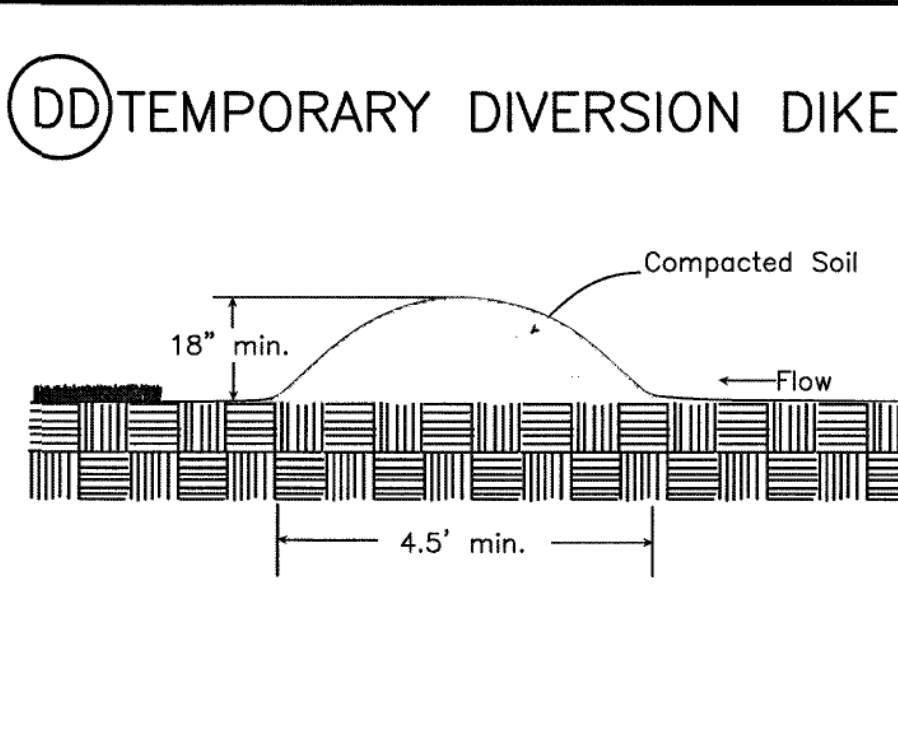
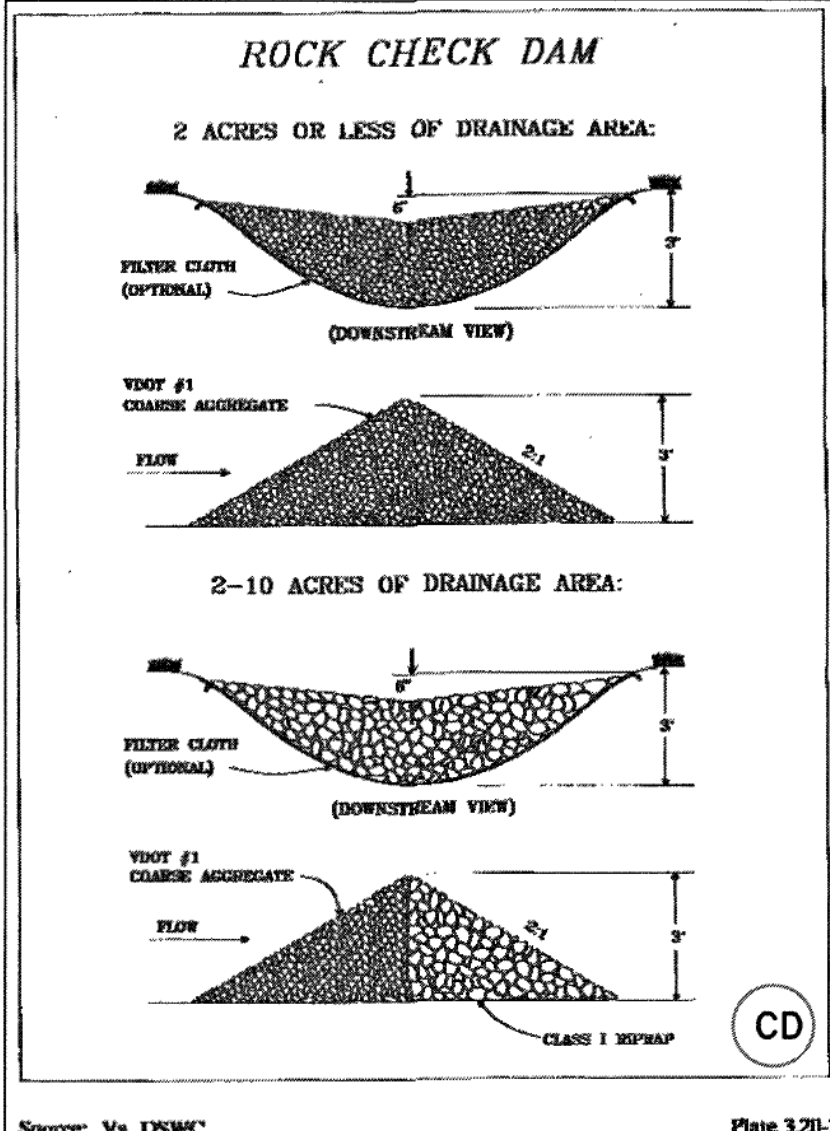
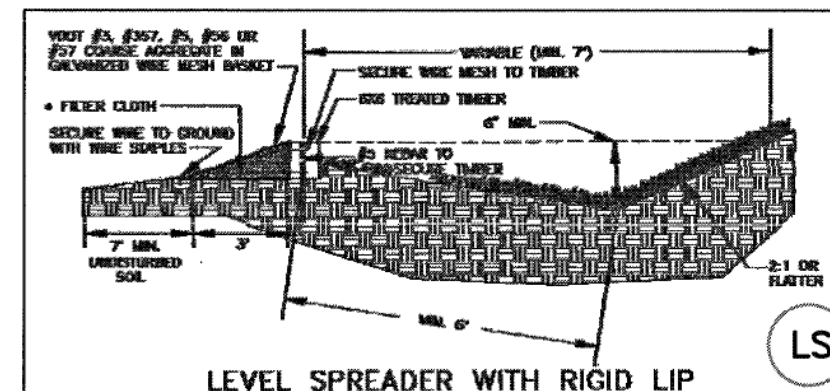
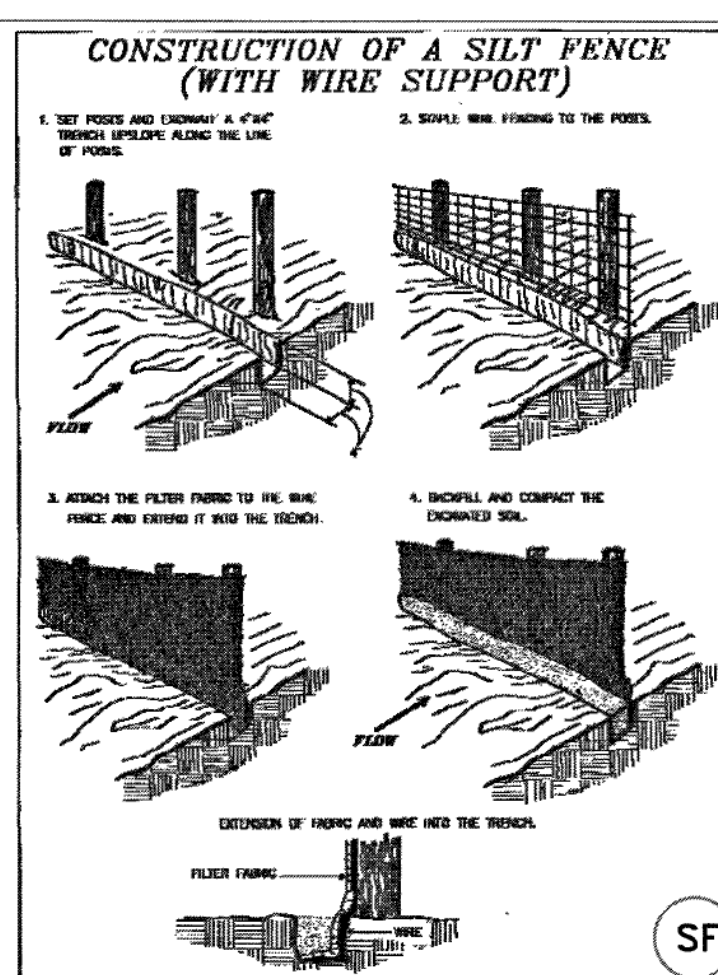
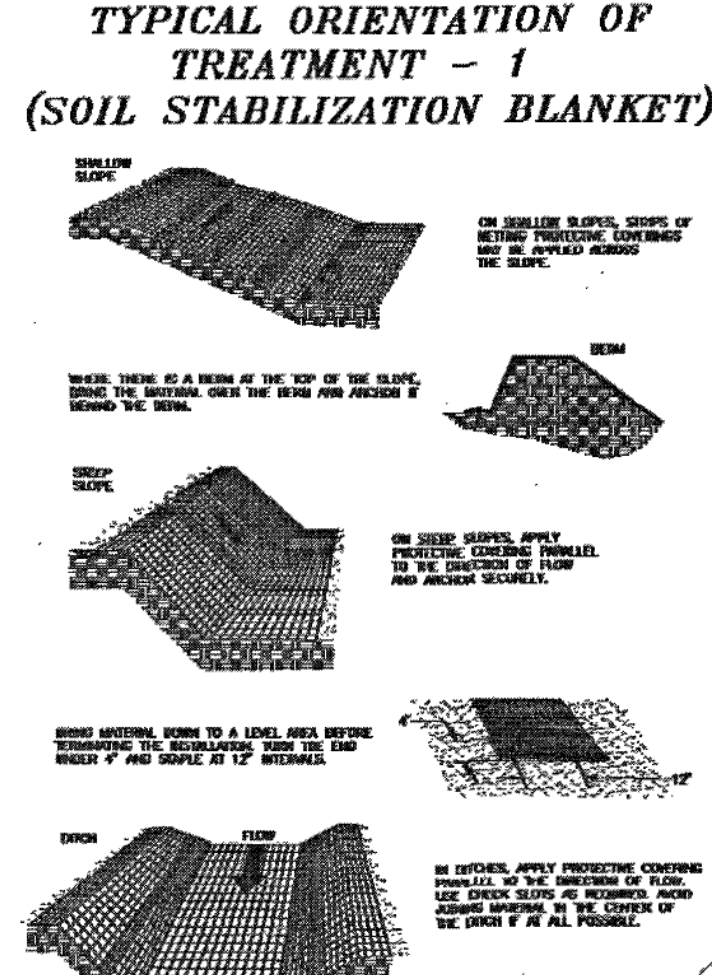
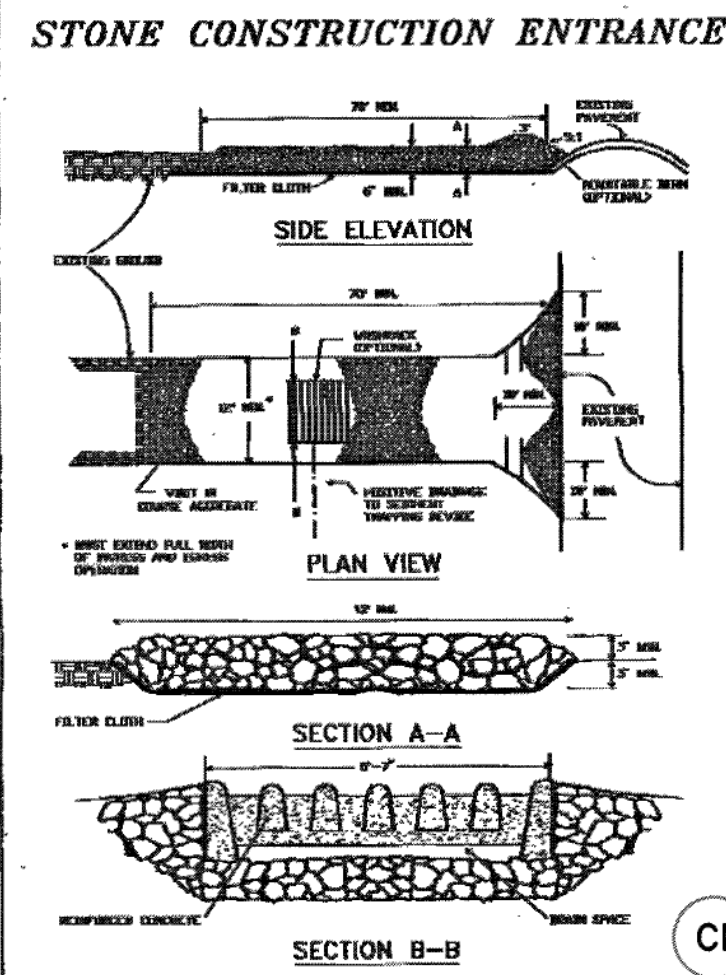


FINCASTLE COURT & DRIVEWAY  
PAVEMENT SECTION\*  
NOT TO SCALE



NOTES:  
GUARDRAIL LOCATIONS SHOWN ON PLANS ARE APPROXIMATE ONLY AND CAN BE ADJUSTED DURING CONSTRUCTION IF AND AS DIRECTED BY THE ENGINEER.  
FOR DETAILS OF POST AND BLOCKOUTS SEE SHEET NO. 501.005.  
FOR DETAILS OF RAIL ELEMENT, RAIL SPLICE JOINT, W-BEAM BACK-UP PLATE, AND ASSOCIATED HARDWARE SEE SHEET NOS. 501.01 AND 501.02.  
THE MAXIMUM DYNAMIC DEFLECTION FOR STANDARD GR-2 IS 3 FEET, AND 2 FEET FOR GR-2A.  
RAIL ELEMENTS ARE FURNISHED SHOP CURVED FOR RADIIBETWEEN 5 FEET AND 100 FEET.

STANDARD BLOCKED-OUT W BEAM GUARDRAIL (STRONG POST SYSTEM)  
VIRGINIA DEPARTMENT OF TRANSPORTATION



ES-1: UNLESS OTHERWISE INDICATED, ALL VEGETATIVE AND STRUCTURAL EROSION AND SEDIMENT CONTROL PRACTICES WILL BE CONSTRUCTED AND MAINTAINED ACCORDING TO MINIMUM STANDARDS AND SPECIFICATIONS OF THE VIRGINIA EROSION AND SEDIMENT CONTROL HANDBOOK AND VIRGINIA REGULATIONS VR 625-02-00 EROSION AND SEDIMENT CONTROL REGULATIONS.

ES-2: THE PLAN APPROVING AUTHORITY MUST BE NOTIFIED ONE WEEK PRIOR TO THE ONSITE PRECONSTRUCTION CONFERENCE, ONE WEEK PRIOR TO THE COMMENCEMENT OF LAND DISTURBING ACTIVITY, AND ONE WEEK PRIOR TO THE FINAL INSPECTION.

ES-3: ALL EROSION AND SEDIMENT CONTROL MEASURES ARE TO BE PLACED PRIOR TO OR AS THE FIRST STEP IN CLEARING.

ES-4: A COPY OF THE APPROVED EROSION AND SEDIMENT CONTROL PLAN & NARRATIVE, AS WELL AS A COPY OF THE LAND DISTURBING PERMIT, SHALL BE MAINTAINED ON THE SITE AT ALL TIMES. THE EROSION AND SEDIMENT CONTROL ADMINISTRATOR WILL DELIVER THESE MATERIALS AT THE ONSITE PRECONSTRUCTION CONFERENCE.

ES-5: PRIOR TO COMMENCING LAND DISTURBING ACTIVITIES IN AREAS OTHER THAN INDICATED ON THESE PLANS (INCLUDING, BUT NOT LIMITED TO, OFF-SITE BORROW OR WASTE AREAS), THE CONTRACTOR SHALL SUBMIT A SUPPLEMENTARY EROSION CONTROL PLAN TO THE OWNER FOR REVIEW AND APPROVAL BY THE PLAN APPROVING AUTHORITY.

ES-6: THE CONTRACTOR IS RESPONSIBLE FOR INSTALLATION OF ANY ADDITIONAL EROSION CONTROL MEASURES NECESSARY TO PREVENT EROSION AND SEDIMENTATION AS DETERMINED BY THE PLAN APPROVING AUTHORITY.

ES-7: ALL DISTURBED AREAS ARE TO DRAIN TO APPROVED SEDIMENT CONTROL MEASURES AT ALL TIMES DURING THE LAND DISTURBING ACTIVITIES AND DURING SITE DEVELOPMENT UNTIL FINAL STABILIZATION IS ACHIEVED.

ES-8: DURING DEWATERING OPERATIONS, WATER WILL BE PUMPED INTO AN APPROVED FILTERING DEVICE.

ES-9: THE CONTRACTOR SHALL INSPECT ALL EROSION CONTROL MEASURES PERIODICALLY AND AFTER EACH RUNOFF-PRODUCING RAINFALL EVENT. ANY NECESSARY REPAIRS OR CLEANUP TO MAINTAIN THE EFFECTIVENESS OF THE EROSION CONTROL DEVICES SHALL BE MADE IMMEDIATELY. AN INSPECTION REPORT MUST BE FILED WITH THE BOTETOURT COUNTY EROSION AND SEDIMENT CONTROL ADMINISTRATOR ONCE EVERY TWO WEEKS, BEGINNING WITH COMMENCEMENT OF THE LAND DISTURBING ACTIVITY, AND WITHIN 48 HOURS OF ANY RUNOFF-PRODUCING RAINFALL EVENT. FAILURE TO SUBMIT A REPORT WILL BE GROUNDS FOR IMMEDIATE REVOCATION OF THE LAND DISTURBING PERMIT. REPORTS MUST BE POSTMARKED WITHIN 24 HOURS OF THE DEADLINE. A STANDARD INSPECTION REPORT FORM WILL BE SUPPLIED, WHICH SHOULD BE COPIED AS NECESSARY. THE PROVISION IN NO WAY WAIVES THE RIGHTS OF BOTETOURT COUNTY PERSONNEL TO CONDUCT SITE INSPECTIONS, NOR DOES IT DENY THE RIGHT OF THE PERMITTEE(S) TO ACCOMPANY THE INSPECTOR(S).

NO.	TITLE	KEY	SYMBOL	NO.	TITLE	KEY	SYMBOL
3.01	SAFETY FENCE	SAF	[Symbol]	3.20	ROCK CHECK DAMS	CD	[Symbol]
3.02	TEMPORARY GRAVEL CONSTRUCTION ENTRANCE	CE	[Symbol]	3.21	LEVEL SPREADER	LS	[Symbol]
3.03	CONSTRUCTION ROAD STABILIZATION	CRS	[Symbol]	3.22	VEGETATIVE STREAMBANK STABILIZATION	VSS	[Symbol]
3.04	STRAW BALE BARRIER	STB	[Symbol]	3.23	STRUCTURAL STREAMBANK STABILIZATION	SSS	[Symbol]
3.05	SILT FENCE	SF	[Symbol]	3.24	TEMPORARY VEHICULAR STREAM CROSSING	VSC	[Symbol]
3.06	BRUSH BARRIER	BB	[Symbol]	3.25	UTILITY STREAM CROSSING	USC	[Symbol]
3.07	STORM DRAIN INLET PROTECTION	IDP	[Symbol]	3.26	DEWATERING STRUCTURE	DS	[Symbol]
3.08	CULVERT INLET PROTECTION	CIP	[Symbol]	3.27	TURBIDITY CURTAIN	TC	[Symbol]
3.09	TEMPORARY DIVERSION DIKE	DD	[Symbol]	3.28	SUBSURFACE DRAIN	SD	[Symbol]
3.10	TEMPORARY FILL DIVERSION	FD	[Symbol]	3.29	SURFACE ROUGHENING	SR	[Symbol]
3.11	TEMPORARY RIGHT-OF-WAY DIVERSION	RWD	[Symbol]	3.30	TOPSOILING	TD	[Symbol]
3.12	DIVERSION	DV	[Symbol]	3.31	TEMPORARY SEEDING	TS	[Symbol]
3.13	TEMPORARY SEDIMENT TRAP	ST	[Symbol]	3.32	PERMANENT SEEDING	PS	[Symbol]
3.14	TEMPORARY SEDIMENT BASIN	SB	[Symbol]	3.33	SODDING	SO	[Symbol]
3.15	TEMPORARY SLOPE DRAIN	SDS	[Symbol]	3.34	BERMUDA GRASS AND ZOYSIAGRASS ESTABLISHMENT	BGA	[Symbol]
3.16	PAVED FLUME	PF	[Symbol]	3.35	MULCHING	MU	[Symbol]
3.17	STORMWATER CONVEYANCE CHANNEL	SC	[Symbol]	3.36	SOIL STABILIZATION BLANKETS AND MATTING TREES, SHRUBS, VINES AND GROUND COVERS	SSM	[Symbol]
3.18	OUTLET PROTECTION	OP	[Symbol]	3.37	TREE PRESERVATION AND PROTECTION	TP	[Symbol]
3.19	RIPRAP	RR	[Symbol]	3.38	DUST CONTROL	DC	[Symbol]

EROSION - SILTATION CONTROL COST ESTIMATE				
ALL COSTS GIVEN ARE COMPLETE IN PLACE				
DESCRIPTION	UNIT	QUANTITY	UNIT COST	TOTAL COST
SILT FENCE	LF	470	\$ 6	\$ 2,820.00
OP	EA	1	625	625.00
TS - PS - MU	AC	1.28	1750	2,240.00
CD	EA	9	125	1,125.00
LS	EA	1	1,250	1,250.00
CE	EA	1	5,000	5,000.00
ST	CY	307	5.00	1,535.00
DD	LF	250	3.00	750.00
SUB-TOTAL				\$ 13,810.00
20% CONTINGENCY				\$ 2,762.00
TOTAL PROJECT COST				\$ 16,572.00

DISTURBED AREAS: 71,003 SF (1.63 AC.)

COMMONWEALTH OF VIRGINIA  
ROBERT H. WAMPLER, JR.  
Lic. No. 34713  
9/21/16  
PROFESSIONAL ENGINEER