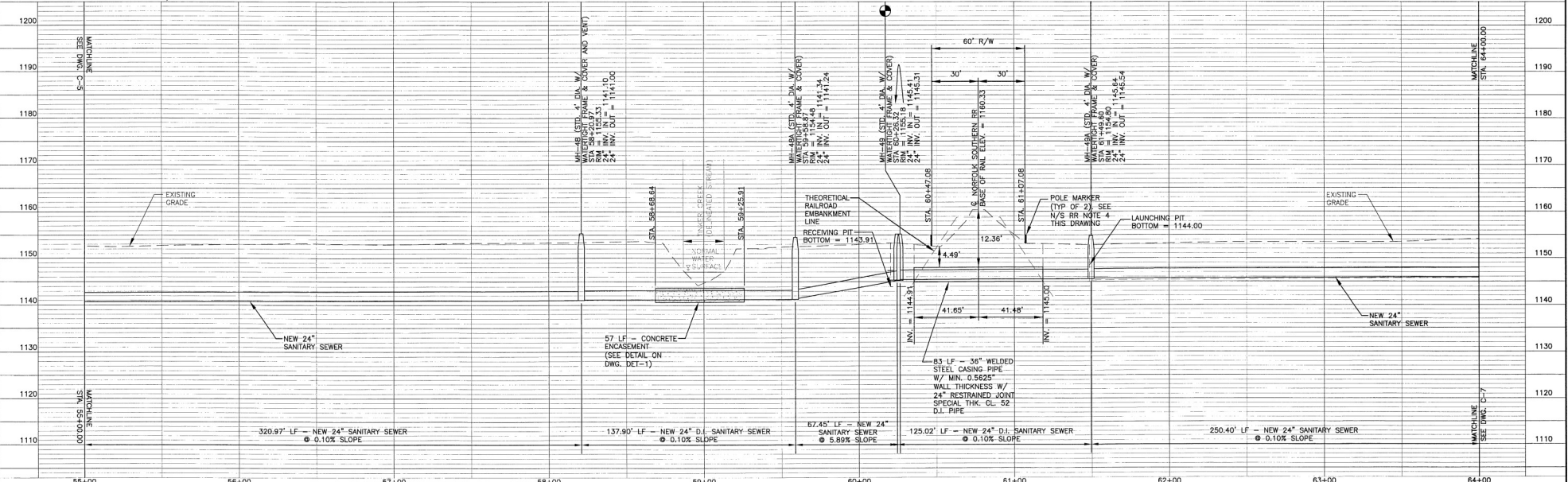
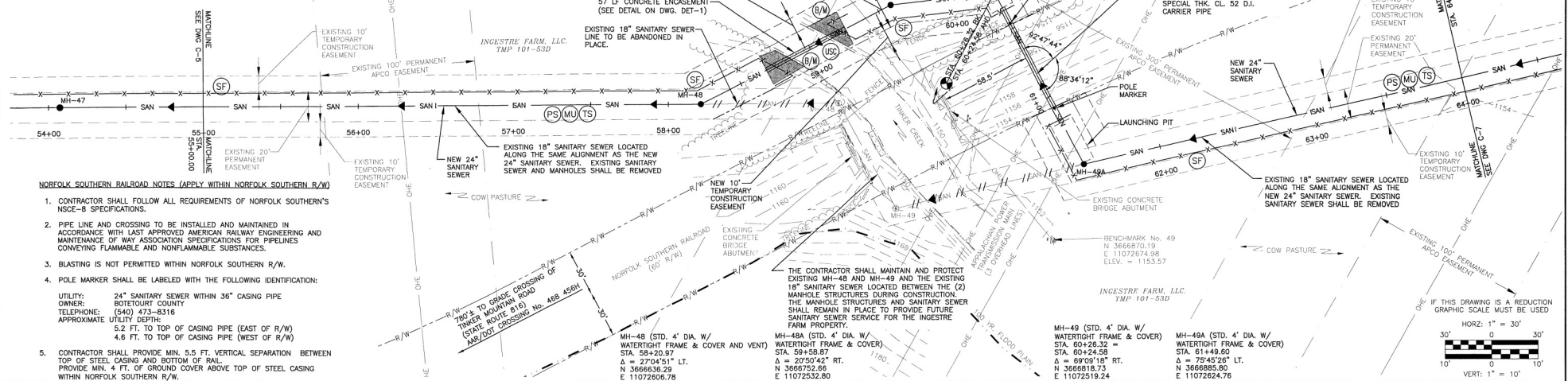


NOTES:

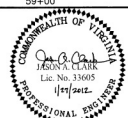
1. PIPE LENGTHS ARE MEASURED FROM CENTER OF STRUCTURE TO CENTER OF STRUCTURE. PIPE SLOPES ARE BASED ON THIS HORIZONTAL DISTANCE AND INVERTS ARE MEASURED AT THE FACE OF THE STRUCTURE.
2. PROVIDE CONSTRUCTION ENTRANCES PER DETAIL ON DWG. DET-2 AT ALL PROJECT ACCESS POINTS TO PREVENT THE TRANSPORT OF SEDIMENT OFF OF THE PROJECT SITE.
3. ALL PROJECT LAYDOWN AREAS SHALL BE GRAVEL AND COMPLY WITH THE LATEST EDITION OF THE VIRGINIA EROSION AND SEDIMENT CONTROL HANDBOOK.

4. THE PROJECT AREA BETWEEN STA. 61+15.5 AND STA. 64+39.74 CAN BE ACCESSED FROM BARRIE ANN KNOX PROPERTY (TWP 101-53A) VIA EXISTING NORFOLK SOUTHERN AT-GRADE CROSSING AND PERMANENT EASEMENT ALONG TINKER CREEK INTERCEPTOR. COORDINATE ACCESS WITH NORFOLK SOUTHERN, AFFECTED PROPERTY OWNERS, AND BOTETOURT COUNTY DEPT. OF PUBLIC WORKS.



1	REVISED EXISTING SANITARY SEWER BETWEEN MH-48 & MH-49 TO REMAIN IN SERVICE PER COUNTY REQUEST.	JAC	1/11/12																																			
NO.	REVISION	BY	DATE	NO.	REVISION	BY	DATE																															

M:\211036.02 Botetourt County Tinker Creek Interceptor\dwg\1036C-6.dwg



ISSUED FOR CONSTRUCTION
JANUARY 27, 2012



DESIGNED BY: JMF/JAC	DRAWN BY: WSW/CLP	CHECKED BY: EJTP	DATE: 1/11/12	SCALE: AS NOTED	DATE: 7-15-11	SHEET NUMBER: 8 OF 23
PROJECT: BOTETOURT COUNTY, VIRGINIA PHASE I TINKER CREEK SANITARY SEWER INTERCEPTOR IMPROVEMENTS	TITLE: NEW SANITARY SEWER - PLAN AND PROFILE STA. 55+00.00 TO STA. 64+00.00	DISCIPLINE: CIVIL	SCALE: H: AS NOTED V: 1" = 10'	DATE: 7-15-11	SHEET NUMBER: 8 OF 23	