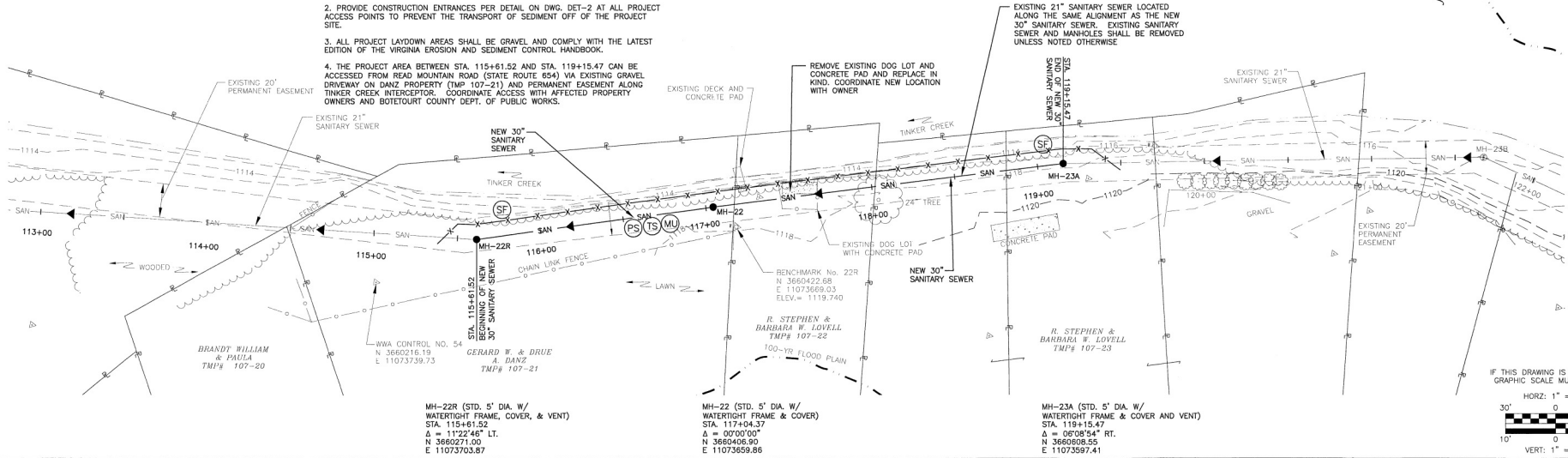


NOTES:

1. PIPE LENGTHS ARE MEASURED FROM CENTER OF STRUCTURE TO CENTER OF STRUCTURE. PIPE SLOPES ARE BASED ON THIS HORIZONTAL DISTANCE AND INVERTS ARE MEASURED AT THE FACE OF THE STRUCTURE.
2. PROVIDE CONSTRUCTION ENTRANCES PER DETAIL ON DWG. DET-2 AT ALL PROJECT ACCESS POINTS TO PREVENT THE TRANSPORT OF SEDIMENT OFF OF THE PROJECT SITE.
3. ALL PROJECT LAYDOWN AREAS SHALL BE GRAVEL AND COMPLY WITH THE LATEST EDITION OF THE VIRGINIA EROSION AND SEDIMENT CONTROL HANDBOOK.
4. THE PROJECT AREA BETWEEN STA. 115+61.52 AND STA. 119+15.47 CAN BE ACCESSED FROM READ MOUNTAIN ROAD (STATE ROUTE 654) VIA EXISTING GRAVEL DRIVEWAY ON DANZ PROPERTY (TMP 107-21) AND PERMANENT EASEMENT ALONG TINKER CREEK INTERCEPTOR. COORDINATE ACCESS WITH AFFECTED PROPERTY OWNERS AND BOTETOURT COUNTY DEPT. OF PUBLIC WORKS.



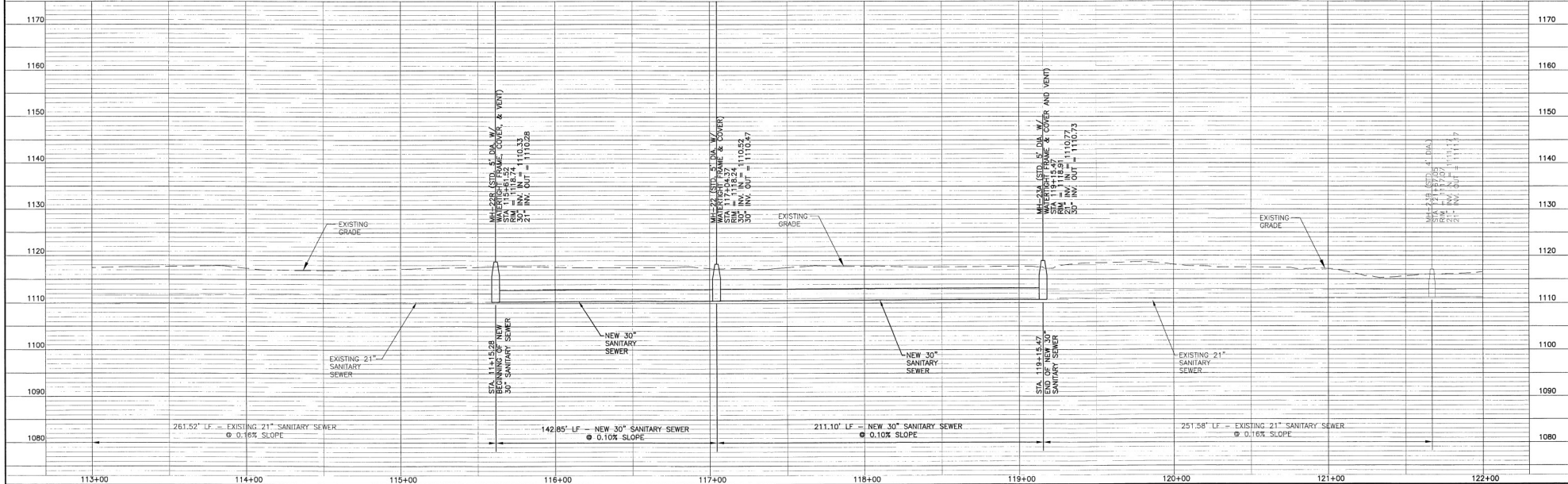
IF THIS DRAWING IS A REDUCTION
GRAPHIC SCALE MUST BE USED

HORIZ: 1" = 30'
VERT: 1" = 10'

MH-22R (STD. 5' DIA. W/
WATERTIGHT FRAME, COVER, & VENT)
STA. 115+61.52
Δ = 11°22'46" LT.
N 3660271.00
E 11073703.87

MH-22 (STD. 5' DIA. W/
WATERTIGHT FRAME & COVER)
STA. 117+04.37
Δ = 0°00'00" RT.
N 3660406.90
E 11073669.86

MH-23A (STD. 5' DIA. W/
WATERTIGHT FRAME & COVER AND VENT)
STA. 119+15.47
Δ = 0°08'54" RT.
N 3660408.55
E 11073597.41



NO.	REVISION	BY	DATE	NO.	REVISION	BY	DATE

ISSUED FOR CONSTRUCTION
JANUARY 27, 2012

W. ASSOCIATES
ENGINEERS
SURVEYORS
PLANNERS

DESIGNED BY: JMF/JAC
DRAWN BY: WSW/CLP
CHECKED BY: EJP
DWG NUMBER: 211036.02
FILE NAME: 1036C-12.dwg
DISCIPLINE: CIVIL
SCALE: H.S. AS NOTED
DATE: 7-15-11

PROJECT: BOTETOURT COUNTY, VIRGINIA
PHASE I TINKER CREEK
SANITARY SEWER INTERCEPTOR IMPROVEMENTS
TITLE: NEW SANITARY SEWER - PLAN AND PROFILE
STA. 115+61.52 TO STA. 119+15.47

REVISION SET: 2
DRAWING NUMBER: C-12
SHEET NUMBER: 14 OF 23