

PROJECT MANAGER: *Mohammad Zaid, PE (540) 387-5374 (Salem)*
SURVEYED BY: *Richard Ziem, L.S. (703) 631-5325 (Burgess & Niple)*
DESIGN SUPERVISED BY: *J. Scott Hodge, PE (540) 857-3322 (AECOM)*
DESIGNED BY: *Craig Riddle, PE (540) 857-3369 (AECOM)*

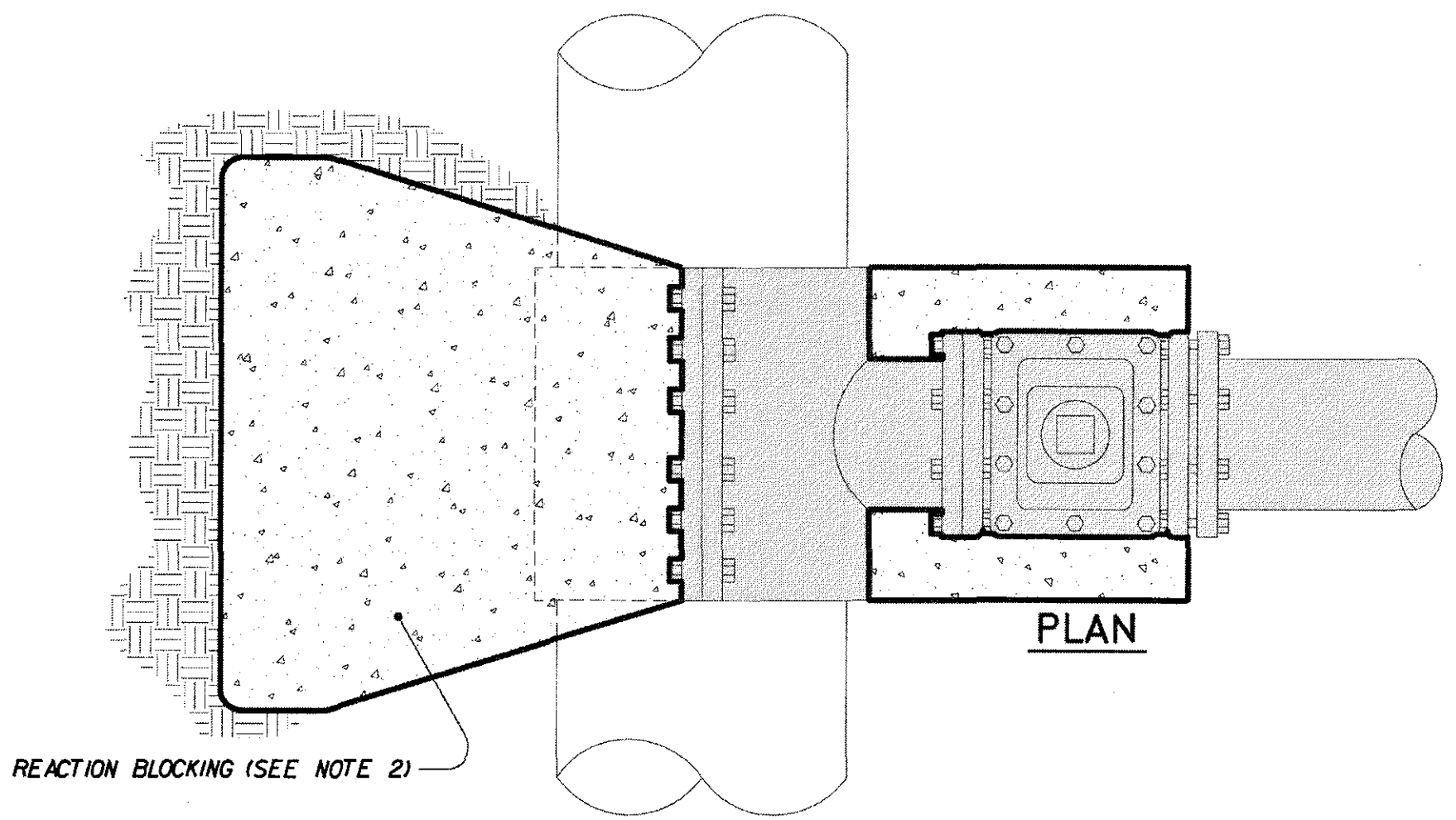
UTILITY DETAILS

REVISED	STATE	ROUTE	STATE PROJECT	SHEET NO.
	VA.	11	0081-011-120, PE-102 RW-202, C-502	

DESIGN FEATURES RELATING TO CONSTRUCTION OR TO REGULATION AND CONTROL OF TRAFFIC MAY BE SUBJECT TO CHANGE AS DEEMED NECESSARY BY THE DEPARTMENT

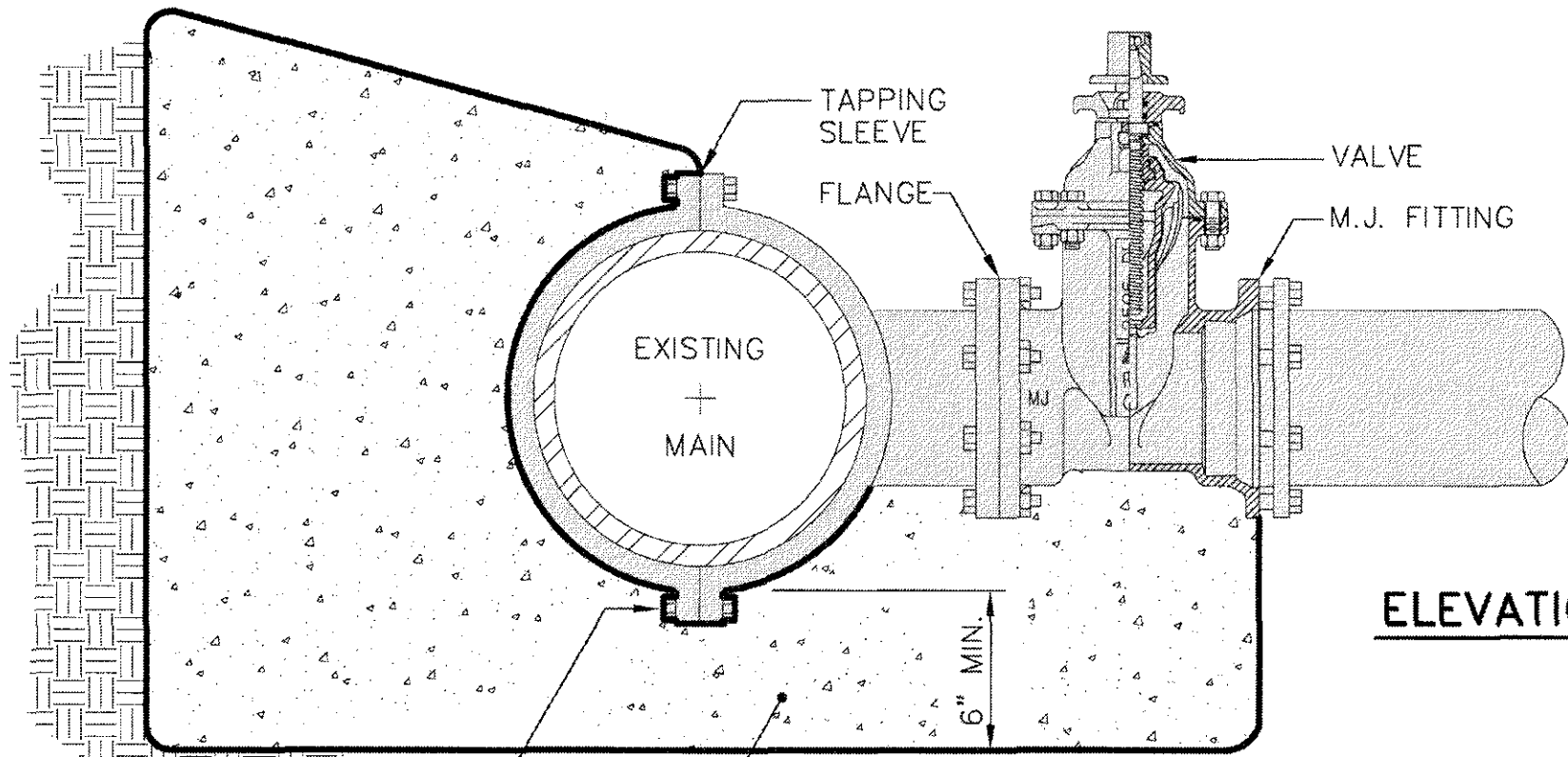
AECOM TECH. SERV., INC.
ROANOKE, VIRGINIA
UTILITY ENGINEER

THESE PLANS ARE UNFINISHED AND UNAPPROVED AND ARE NOT TO BE USED FOR ANY TYPE OF CONSTRUCTION.



PLAN

REACTION BLOCKING (SEE NOTE 2)



ELEVATION

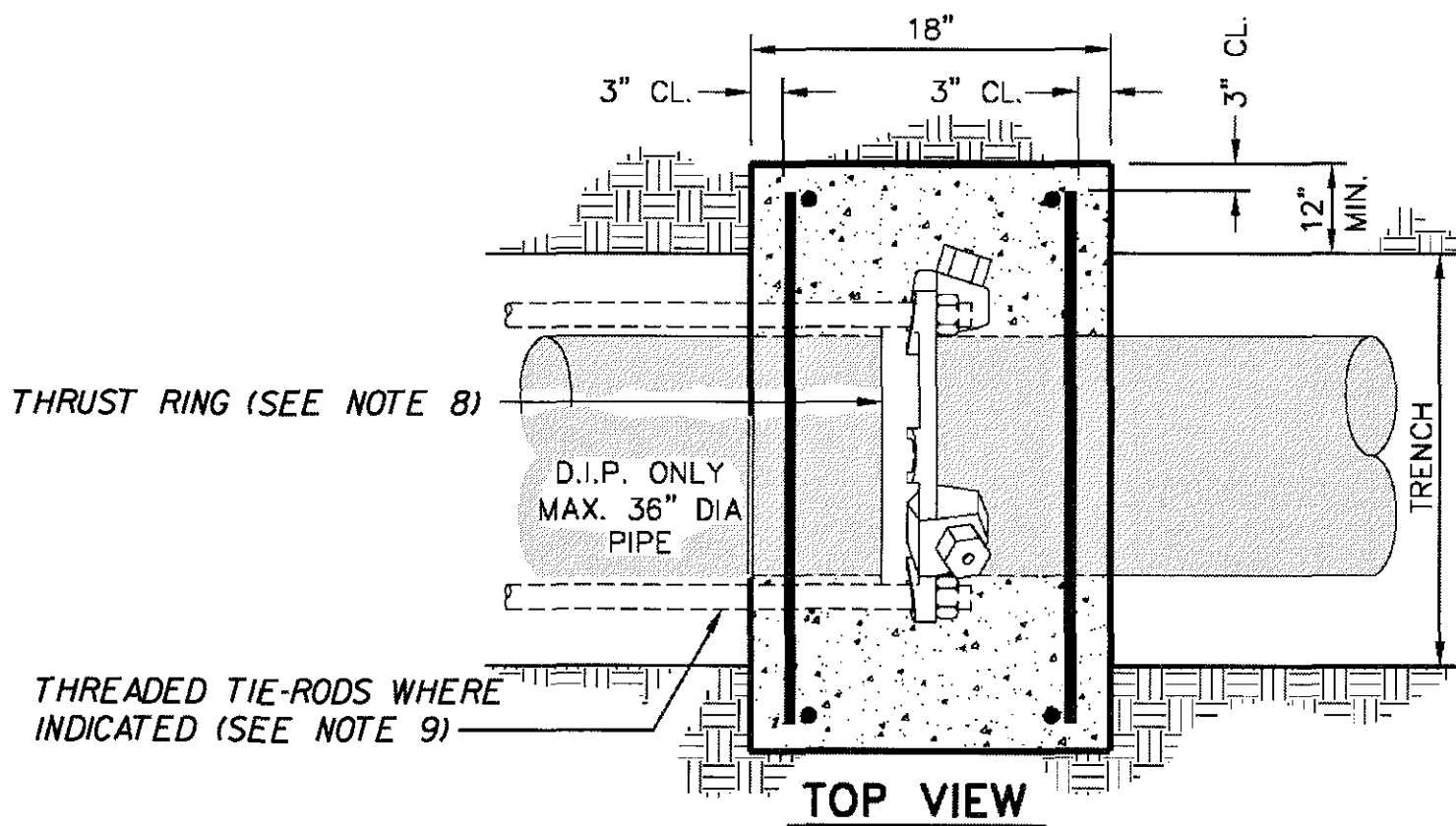
SEE NOTE 1

POUR 3000 PSI CONCRETE BLOCKING AND FOOTING UNDER ASSEMBLY AS SHOWN

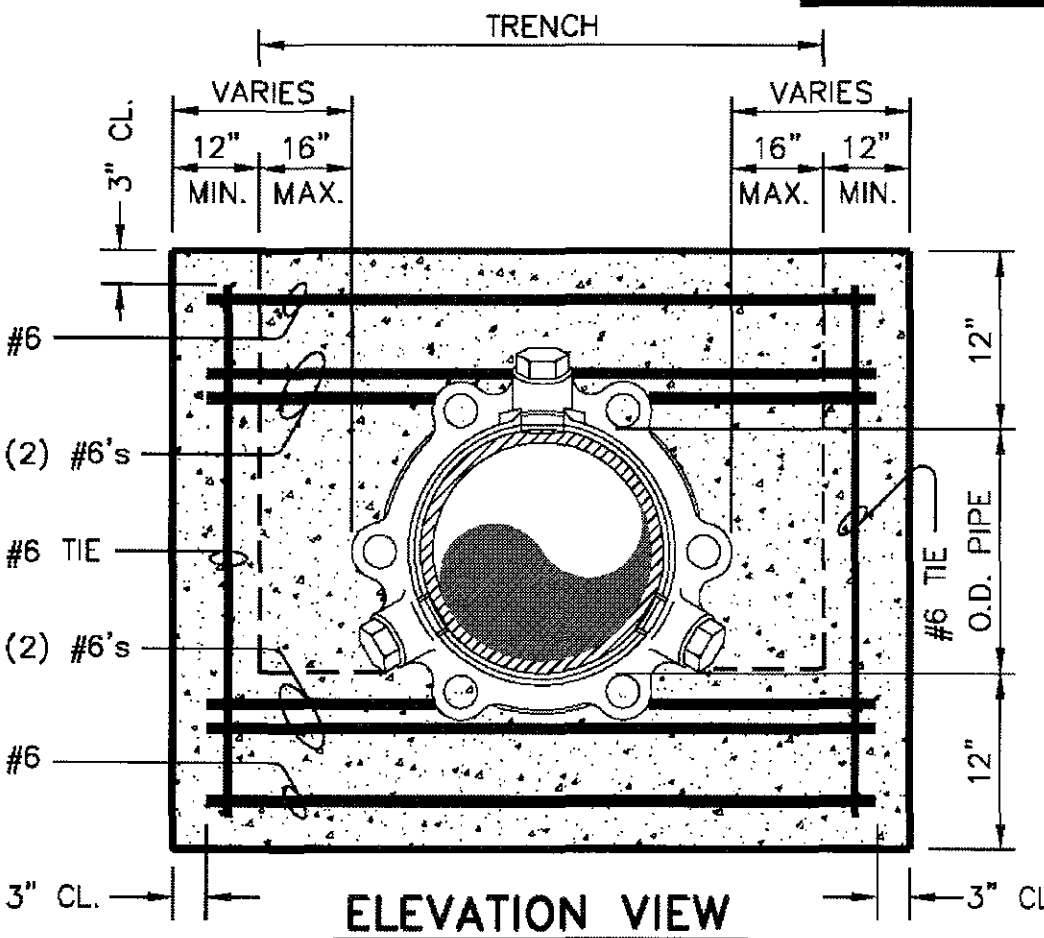
NOTES:

- CONCRETE SHALL NOT CONTACT BOLTS OR ENDS OF MECHANICAL JOINT FITTINGS. (WRAP IN POLYETHYLENE PLASTIC).
- SEE REACTION BLOCKING DETAIL FOR BLOCKING DIMENSIONS.
- TAPPING SLEEVE SHALL BE A MINIMUM OF 4" FROM NEAREST PIPE JOINT.
- PROVIDE AMERICAN SERIES 2800-C MJ DUCTILE IRON TAPPING SLEEVE AND GATE VALVE. PROVIDE RESILIENT SEAT GATE VALVE CONFORMING TO AWWA C509. PROVIDE MANUFACTURER RECOMMENDED AND APPLIED CORROSION COATING FOR TAPPING SLEEVE AND VALVE. CONTRACTOR SHALL INSTALL TAPPING SLEEVE AND VALVE ACCORDING TO ALL RECOMMENDATIONS OF MANUFACTURER. CONTRACTOR SHALL FIELD VERIFY EXISTING PIPE MATERIAL, DIAMETER, ROUNDNESS, AND ALL NECESSARY INFORMATION AS REQUIRED PRIOR TO ORDERING TAPPING SLEEVE AND VALVE. RESTRAIN VALVE PER MANUFACTURER'S RECOMMENDATION. PROVIDE VDOT VB-1 VALVE BOX FOR VALVE.

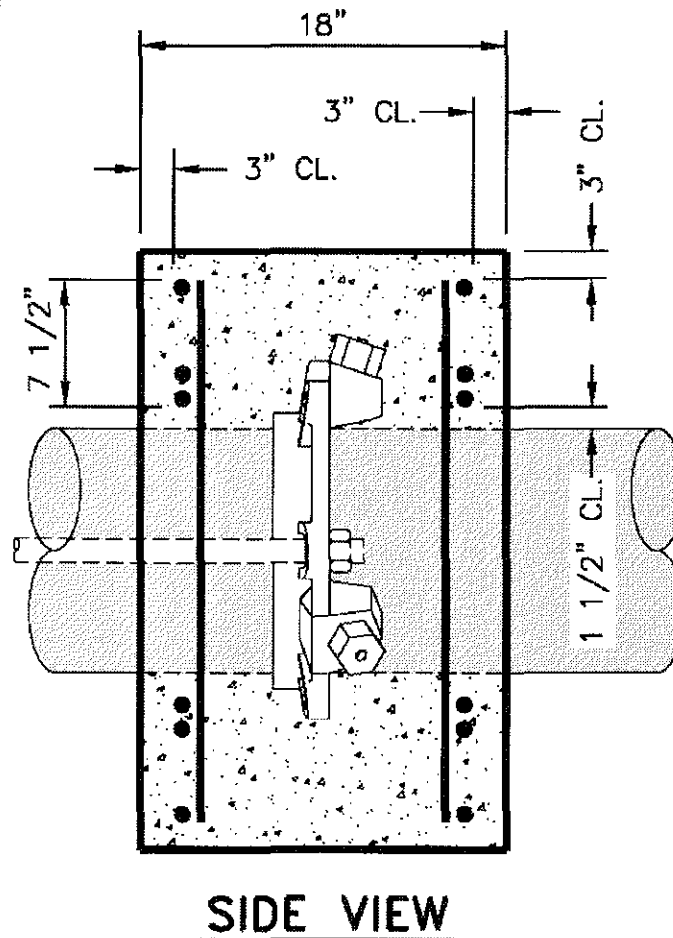
TAPPING SLEEVE VALVE DETAIL
NO SCALE



TOP VIEW



ELEVATION VIEW

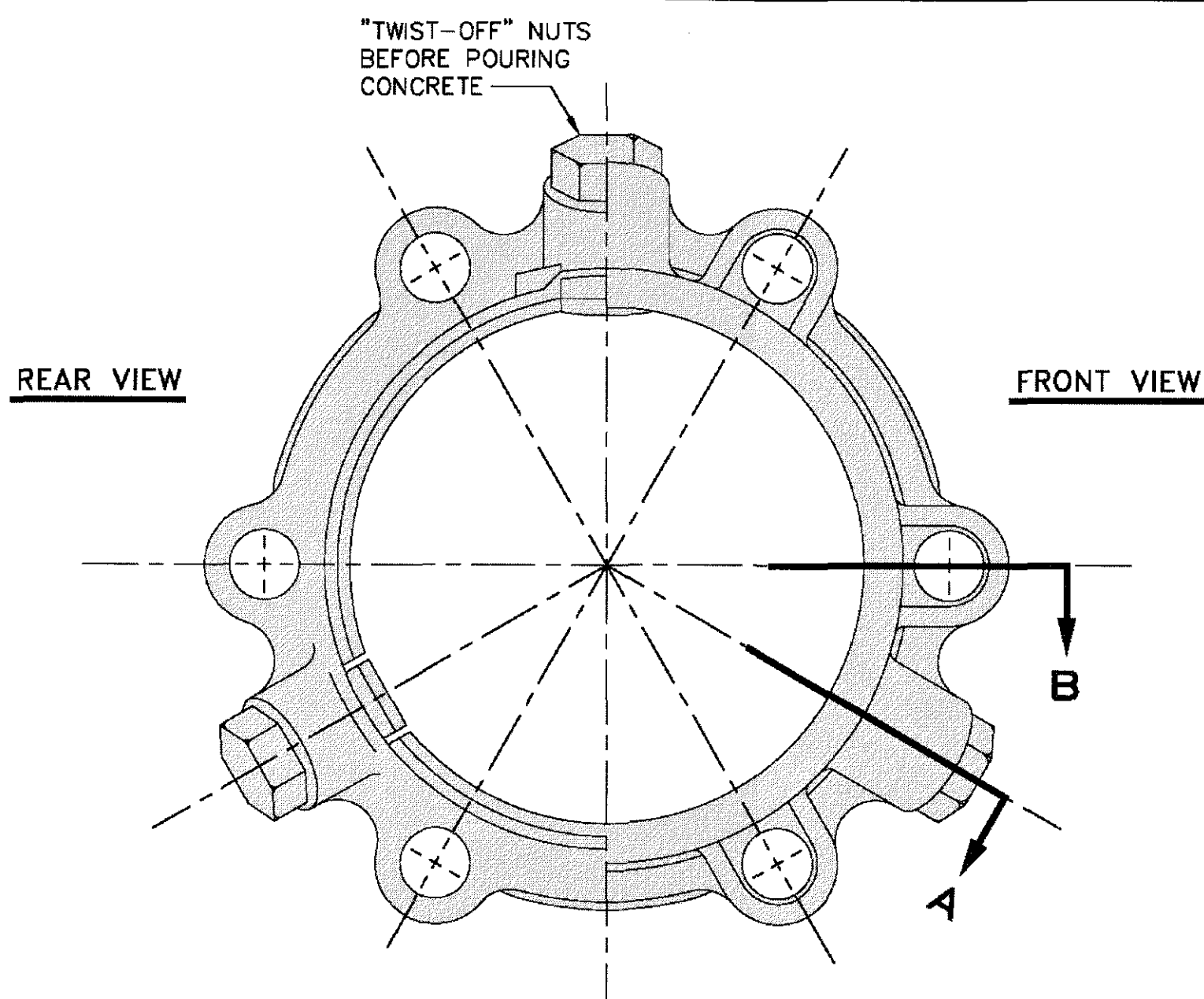


SIDE VIEW

NOTES:

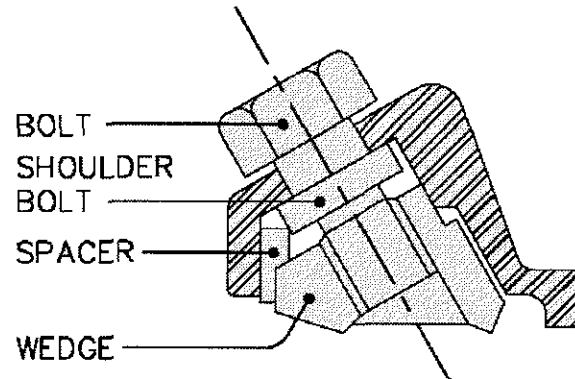
- CONCRETE SHALL BE 3000 P.S.I.
- REINFORCING BARS SHALL BE DEFORMED, AND TIED TOGETHER.
- TRENCH BOTTOM WIDTH IN VICINITY OF THRUST BLOCK(S) INSTALLATION SHALL BE MINIMUM WIDTH.
- BACKFILL AND COMPACT IN 6" LAYERS.
- PLACE THRUST COLLAR ON ONE FULL JOINT OF PIPE.
- LAST JOINT OF PIPE WITH THRUST COLLAR TO BE MECHANICAL JOINT PIPE.
- PLACE RESTRAINED JOINT THRUST RING 4" FROM PLUG END OF PIPE.
- THRUST RING SHALL BE EBBA IRON SERIES 1100SDB WEDGE ACTION RESTRAINED JOINT RETAINER GLAND, OR APPROVED EQUAL FOR EXISTING PIPE. EBBA IRON SERIES 1100 WEDGE ACTION RESTRAINED JOINT RETAINER GLAND, OR APPROVED EQUAL FOR PROPOSED PIPE. PROVIDE POLYETHYLENE WRAP FOR RINGS PER MANUFACTURER'S RECOMMENDATION.
- TIE-RODS SHALL BE ASTM A307 CADMIUM COATED TIE-RODS. PROVIDE SIX (6) 1/2" DIAMETER RODS WHERE INDICATED.
- PLACE EQUAL DISTANCE BETWEEN JOINTS WHERE INDICATED ON EXISTING PIPE.

THRUST COLLAR & BLOCKING DETAIL
NO SCALE

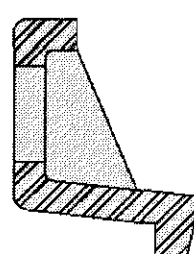


REAR VIEW

FRONT VIEW



SECTION A



SECTION B

NOTES:

- WEDGE ACTION RESTRAINED JOINT RETAINER GLAND PER WATER/SANITARY SEWER UTILITY NOTES.

THRUST RING
NO SCALE