

PROJECT MANAGER: Mohammad Zaid, PE (540) 387-5374 (Salem)
SURVEYED BY: Richard Ziams, L.S. (703) 631-5325 (Burgess & Niple)
DESIGN SUPERVISED BY: J. Scott Hodge, PE (540) 857-3322 (AECOM)
DESIGNED BY: Craig Riddle, PE (540) 857-3369 (AECOM)

BOTETOURT COUNTY DETAILS

REVISED	STATE	ROUTE	STATE PROJECT	SHEET NO.
	VA.	11	0081-011-120, PE-102 RW-202, C-502	18H

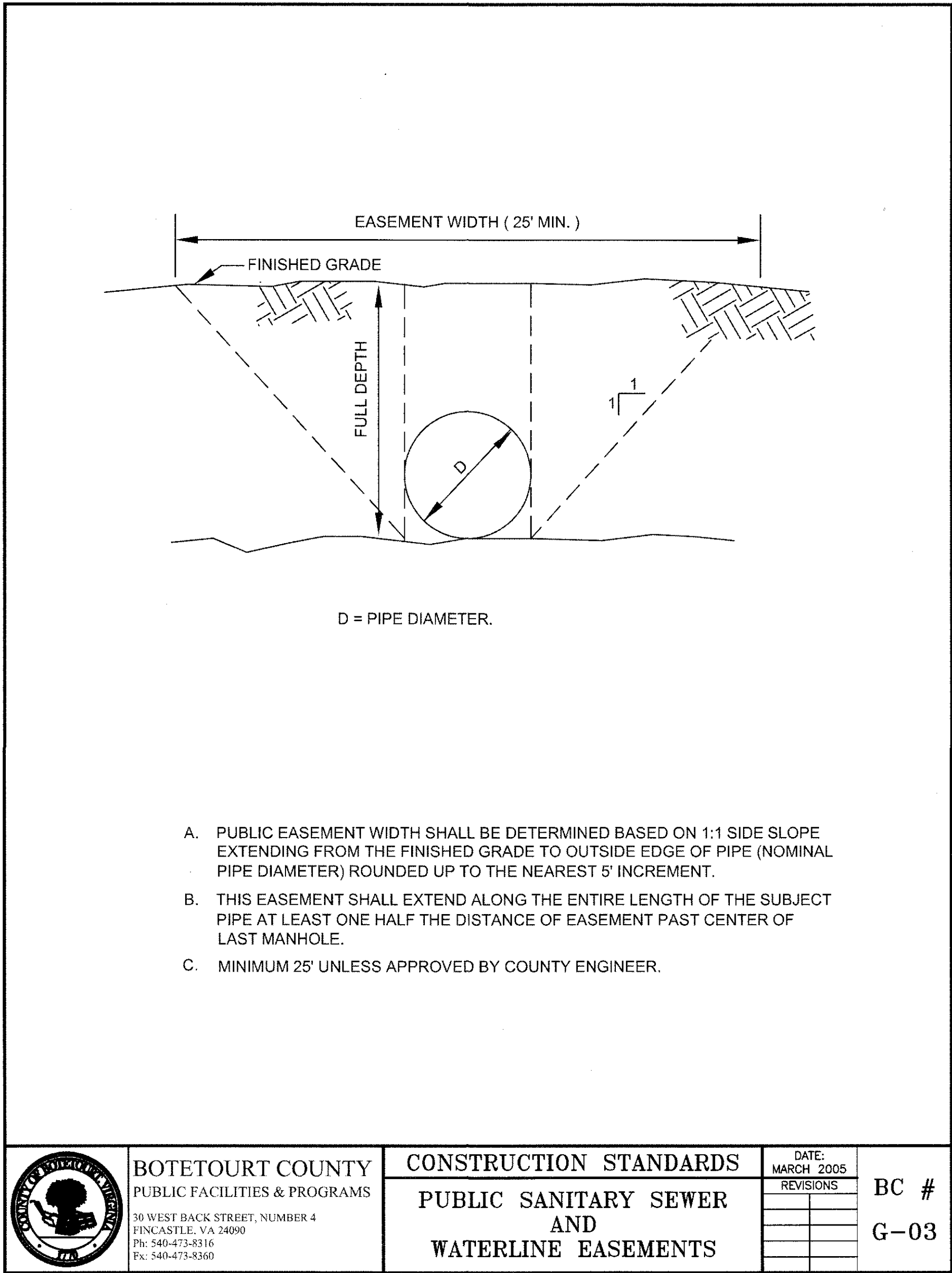
DESIGN FEATURES RELATING TO CONSTRUCTION
OR TO REGULATION AND CONTROL OF TRAFFIC
MAY BE SUBJECT TO CHANGE AS DEEMED
NECESSARY BY THE DEPARTMENT

AECOM TECH. SERV., INC.
ROANOKE, VIRGINIA
UTILITY ENGINEER

THESE PLANS ARE UNFINISHED
AND UNAPPROVED AND ARE NOT
TO BE USED FOR ANY TYPE
OF CONSTRUCTION.

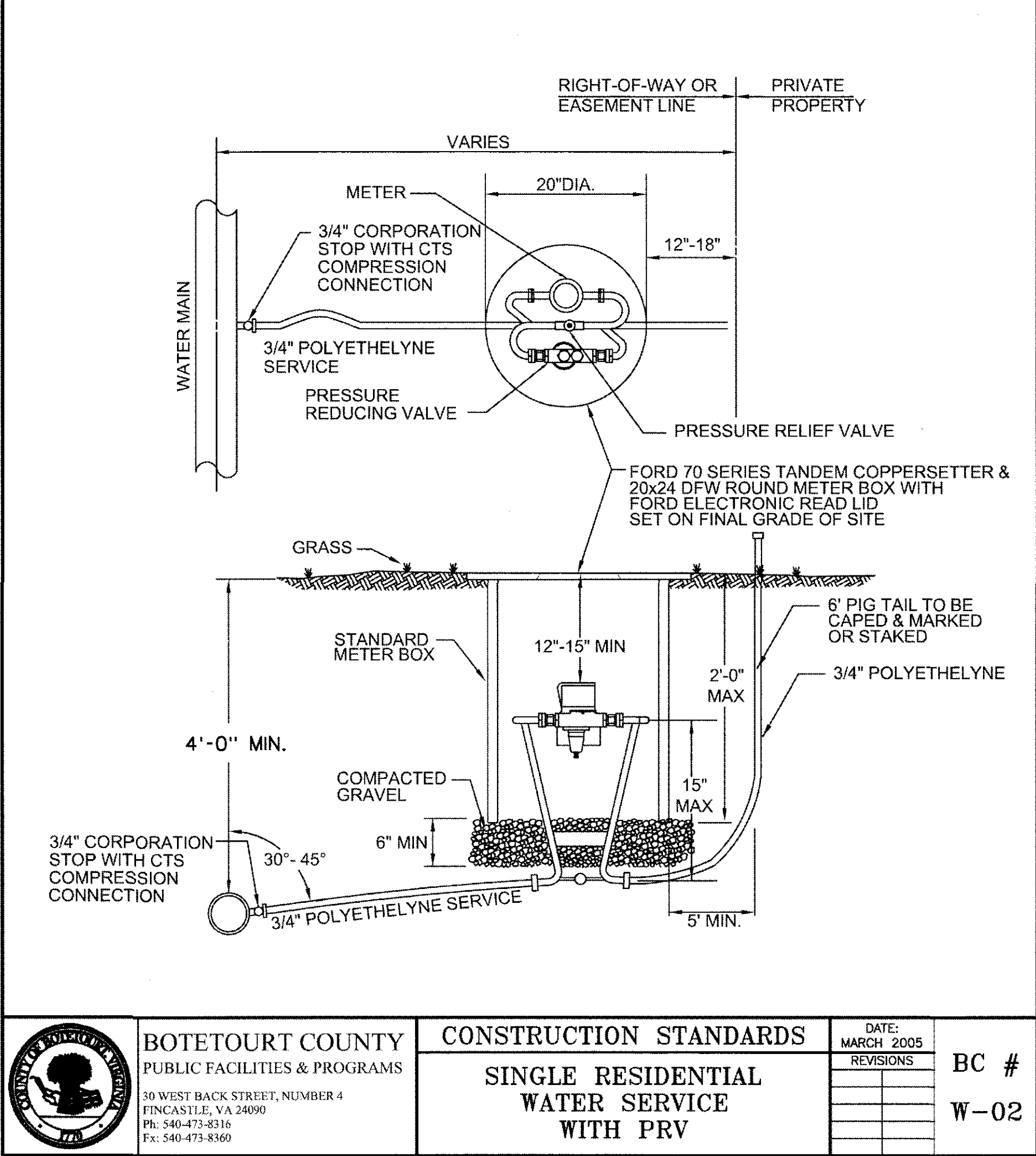
GENERAL NOTES

- INCLUDED BOTETOURT COUNTY DETAILS ARE PROVIDED FOR COURTESY ONLY. CONTRACTOR SHALL ENSURE CONFORMANCE WITH CURRENT VERSION OF BOTETOURT COUNTY DETAILS. OTHER COUNTY DETAILS MAY BE REQUIRED AND NECESSARY TO COMPLETE WORK. CONTRACTOR SHALL CONFORM TO BOTETOURT COUNTY DETAILS UNLESS INDICATED OTHERWISE BY MORE STRINGENT DETAILS. CONTRACTOR SHALL ALSO CONFORM TO VDOT STANDARDS AS REQUIRED, AND WHERE APPLICABLE.



NOTES:

- FORD METER SETTERS MUST BE USED BY CONTRACTOR.
- METERS MUST NOT BE INSTALLED IN BOTTOM OF ROADSIDE DITCH.
- METERS WILL BE PROVIDED AND INSTALLED BY BOTETOURT COUNTY UTILITY DEPARTMENT FOR ALL WATER SYSTEMS OWNED AND MAINTAINED BY BOTETOURT COUNTY.
- METERS SHALL BE SENSUS SR11 WATER METERS.
- SADDLES MUST BE USED WITH ALL PLASTIC & CLASS 50 DUCTILE IRON PIPE.
- ALL POLYETHYLENE SERVICE LINES SHALL BE RATED FOR MINIMUM 200 PSI.



NOTES:

- FORD METER SETTERS MUST BE USED BY CONTRACTOR.
- METERS MUST NOT BE INSTALLED IN BOTTOM OF ROADSIDE DITCH.
- METERS WILL BE PROVIDED AND INSTALLED BY BOTETOURT COUNTY UTILITY DEPARTMENT FOR ALL WATER SYSTEMS OWNED AND MAINTAINED BY BOTETOURT COUNTY.
- METERS SHALL BE SENSUS SR11 WATER METERS.
- SADDLES MUST BE USED WITH ALL PLASTIC & CLASS 50 DUCTILE IRON PIPE.
- ALL POLYETHYLENE SERVICE LINES SHALL BE RATED FOR MINIMUM 200 PSI.

