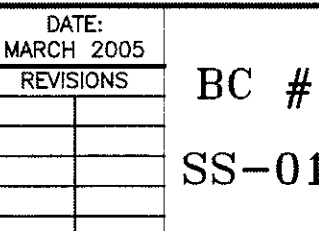


BOTETOURT COUNTY DETAILS

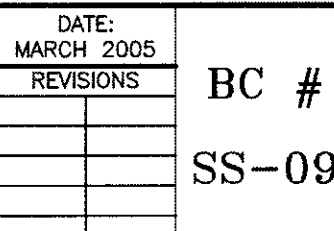
DESIGN FEATURES RELATING TO CONSTRUCTION
OR TO REGULATION AND CONTROL OF TRAFFIC
MAY BE SUBJECT TO CHANGE AS DEEMED
NECESSARY BY THE DEPARTMENT

THESE PLANS ARE UNFINISHED
AND UNAPPROVED AND ARE NOT
TO BE USED FOR ANY TYPE
OF CONSTRUCTION.

- ### CONCENTRIC MANHOLE WITH PRECAST INVERT



PRIVATE PROPERTY
 RIGHT OF WAY OR EASEMENT LINE
 6" HOUSE CLEANOUT FRAME & COVER
 CAPITOL FOUNDRY NPN-CW-18 (NON-TRAFFIC) OR VB-9"S (TRAFFIC)
 CLEAN-OUT TO EXTEND ABOVE GROUND A MIN. OF 3 FEET DURING INSTALLATION OF MAIN LINE. PLUMBER SHALL CUT STACK TO FINISH GRADE & REPLACE C.O. CAP & PLUG WHEN BUILDING SEWER IS CONNECTED TO LATERAL.
 45° OR 22 1/2" BELL & SPIGOT BEND (IF NEEDED)
 45° WYE & REQUIRED BEND (SANITARY TEE NOT ACCEPTABLE)
 2" MIN.
 45° MAX.
 MAIN LINE
 TEE, WYE, TEE/WYE OR COMBINATION OF WYE & 45° BEND FITTINGS SHALL BE SIZED AS REQUIRED.
 11 1/4" OR 22 1/2" BEND
 4" MINIMUM GRAVEL BEDDING
 1/4" PER 1' 0" MINIMUM GRADE
 HORIZONTAL SECTION SHALL EXTEND A MINIMUM OF 5' OR AS DIRECTED BY THE COUNTY.
 SCHEDULE 40/SR 35
 COUPLING
 PLASTIC BODY CLEAN-OUT & CAP
 FINISHED GRADE
 SOLID GLUE CAP
 ROUGH GRADE
 P.U.E.



PIPE ANCHOR
NO SCALE