

PROJECT MANAGER: R. Edward Coke, P.E., Salem S&B (540) 387-5221
SURVEYED BY and DATE COMPLETED: Gary Brant, L.S., Salem L&D (540) 387-5227, August 23, 2011
DESIGNED BY: Brett Helsel, P.E., TransSystems (804) 298-3230
SALEM DISTRICT DESIGN UNIT

EROSION AND SEDIMENT CONTROL PLAN

EROSION AND SEDIMENT CONTROL PLAN NOTES:

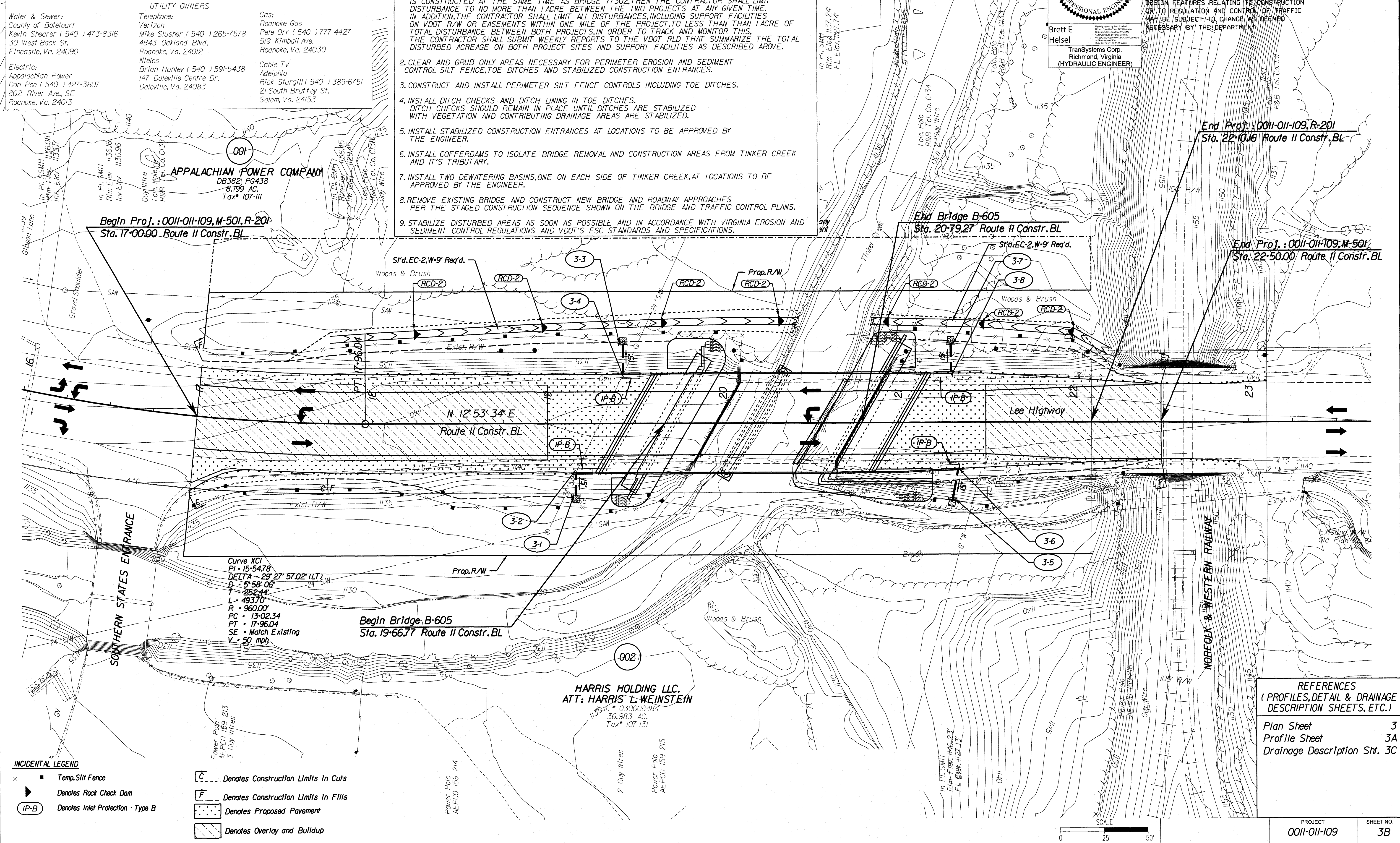
1. THIS PROJECT IS NOT COVERED UNDER THE VPDES CONSTRUCTION PERMIT. IF THIS PROJECT IS CONSTRUCTED AT THE SAME TIME AS BRIDGE 77302, THEN THE CONTRACTOR SHALL LIMIT DISTURBANCE TO NO MORE THAN 1 ACRE BETWEEN THE TWO PROJECTS AT ANY GIVEN TIME. IN ADDITION, THE CONTRACTOR SHALL LIMIT ALL DISTURBANCES, INCLUDING SUPPORT FACILITIES ON VDOT R/W OR EASEMENTS WITHIN ONE MILE OF THE PROJECT, TO LESS THAN 1 ACRE OF TOTAL DISTURBANCE BETWEEN BOTH PROJECTS. IN ORDER TO TRACK AND MONITOR THIS, THE CONTRACTOR SHALL SUBMIT WEEKLY REPORTS TO THE VDOT RLD THAT SUMMARIZE THE TOTAL DISTURBED ACREAGE ON BOTH PROJECT SITES AND SUPPORT FACILITIES AS DESCRIBED ABOVE.
2. CLEAR AND GRUB ONLY AREAS NECESSARY FOR PERIMETER EROSION AND SEDIMENT CONTROL SILT FENCE, TOE DITCHES AND STABILIZED CONSTRUCTION ENTRANCES.
3. CONSTRUCT AND INSTALL PERIMETER SILT FENCE CONTROLS INCLUDING TOE DITCHES.
4. INSTALL DITCH CHECKS AND DITCH LINING IN TOE DITCHES. DITCH CHECKS SHOULD REMAIN IN PLACE UNTIL DITCHES ARE STABILIZED WITH VEGETATION AND CONTRIBUTING DRAINAGE AREAS ARE STABILIZED.
5. INSTALL STABILIZED CONSTRUCTION ENTRANCES AT LOCATIONS TO BE APPROVED BY THE ENGINEER.
6. INSTALL COFFERDAMS TO ISOLATE BRIDGE REMOVAL AND CONSTRUCTION AREAS FROM TINKER CREEK AND ITS TRIBUTARY.
7. INSTALL TWO DEWATERING BASINS, ONE ON EACH SIDE OF TINKER CREEK, AT LOCATIONS TO BE APPROVED BY THE ENGINEER.
8. REMOVE EXISTING BRIDGE AND CONSTRUCT NEW BRIDGE AND ROADWAY APPROACHES PER THE STAGED CONSTRUCTION SEQUENCE SHOWN ON THE BRIDGE AND TRAFFIC CONTROL PLANS.
9. STABILIZE DISTURBED AREAS AS SOON AS POSSIBLE AND IN ACCORDANCE WITH VIRGINIA EROSION AND SEDIMENT CONTROL REGULATIONS AND VDOT'S ESC STANDARDS AND SPECIFICATIONS.



Brett E. Helsel
TransSystems Corp.
Richmond, Virginia
(HYDRAULIC ENGINEER)

REVISED	STATE	ROUTE	PROJECT	SHEET NO.
	VA.	11	0011-011-109, M-501, R-201	3B

DESIGN FEATURES RELATING TO CONSTRUCTION OR TO REGULATION AND CONTROL OF TRAFFIC MAY BE SUBJECT TO CHANGE AS DEEMED NECESSARY BY THE DEPARTMENT.



UTILITY OWNERS

Water & Sewer:
County of Botetourt
Kevin Shearer (540) 473-8316
30 West Back St.
Fincastle, Va. 24090

Electric:
Appalachian Power
Don Poe (540) 427-3607
802 River Ave., SE
Roanoke, Va. 24013

Telephone:
Verizon
Mike Slusher (540) 265-7578
4843 Oakland Blvd.
Roanoke, Va. 24012

Ntelos
Brian Hunley (540) 591-5438
147 Daleville Centre Dr.
Daleville, Va. 24083

Gas:
Roanoke Gas
Pete Orr (540) 777-4427
519 Kimball Ave.
Roanoke, Va. 24030

Cable TV
Adelphia
Rick Sturgill (540) 389-6751
21 South Bruffey St.
Salem, Va. 24153

APPALACHIAN POWER COMPANY
DB382, PG438
8.799 AC.
Tax# 107-111

Begin Proj.: 0011-011-109, M-501, R-201
Sta. 17+00.00 Route 11 Constr. BL

End Bridge B-605
Sta. 20+79.27 Route 11 Constr. BL

End Proj.: 0011-011-109, R-201
Sta. 22+10.16 Route 11 Constr. BL

End Proj.: 0011-011-109, M-501
Sta. 22+50.00 Route 11 Constr. BL

Curve XCI
PI = 15+54.78
DELTA = 29° 27' 57.02" (LT)
D = 5° 58' 06"
T = 252.44'
L = 493.70'
R = 960.00'
PC = 13+02.34
PT = 17+96.04
SE = Match Existing
V = 50 mph

Begin Bridge B-605
Sta. 19+66.77 Route 11 Constr. BL

HARRIS HOLDING LLC.
ATT: HARRIS L. WEINSTEIN
1138 St. # 030008484
36.983 AC.
Tax# 107-131

INCIDENTAL LEGEND

- Temp. Silt Fence
- Denotes Rock Check Dam
- IP-B Denotes Inlet Protection - Type B
- Denotes Construction Limits In Cuts
- Denotes Construction Limits In Fills
- Denotes Proposed Pavement
- Denotes Overlay and Buildup

REFERENCES (PROFILES, DETAIL & DRAINAGE DESCRIPTION SHEETS, ETC.)

Plan Sheet 3
Profile Sheet 3A
Drainage Description Sht. 3C

PROJECT	SHEET NO.
0011-011-109	3B