

**PLACEMENT OF FILL:**  
MATERIAL TO BE USED AS FILL SHALL BE SOIL MATERIAL, ONSITE OR FROM OFFSITE WHICH CAN MEET THE ABOVE CRITERIA, AND SHALL BE FREE OF PLANTS, GRASS, TREE ROOTS, TRASH, OR OTHER ORGANIC OR OTHERWISE DELETERIOUS MATERIAL. TOPSOIL IS NOT TO BE USED FOR FILL MATERIAL. FILL MATERIAL SHALL BE FREE OF ICE. FILL MATERIAL SHALL BE OF SUCH A MOISTURE CONTENT THAT SUCCESSFUL COMPACTION CAN BE ACHIEVED. ROCK MATERIAL WITH LARGEST DIMENSION OF NO MORE THAN 12" IS ALLOWED IN THE FILL MATERIAL. LARGER ROCKS MAY BE INCLUDED ONLY WITH SPECIFIC DIRECTIONS FROM THE SOILS ENGINEER AS TO PLACEMENT IN THE FILL AND SPECIAL COMPACTION AROUND THEM. ROCKS LARGER THAN 12" SHALL NOT BE PLACED IN FILL BENEATH BUILDING AREAS.

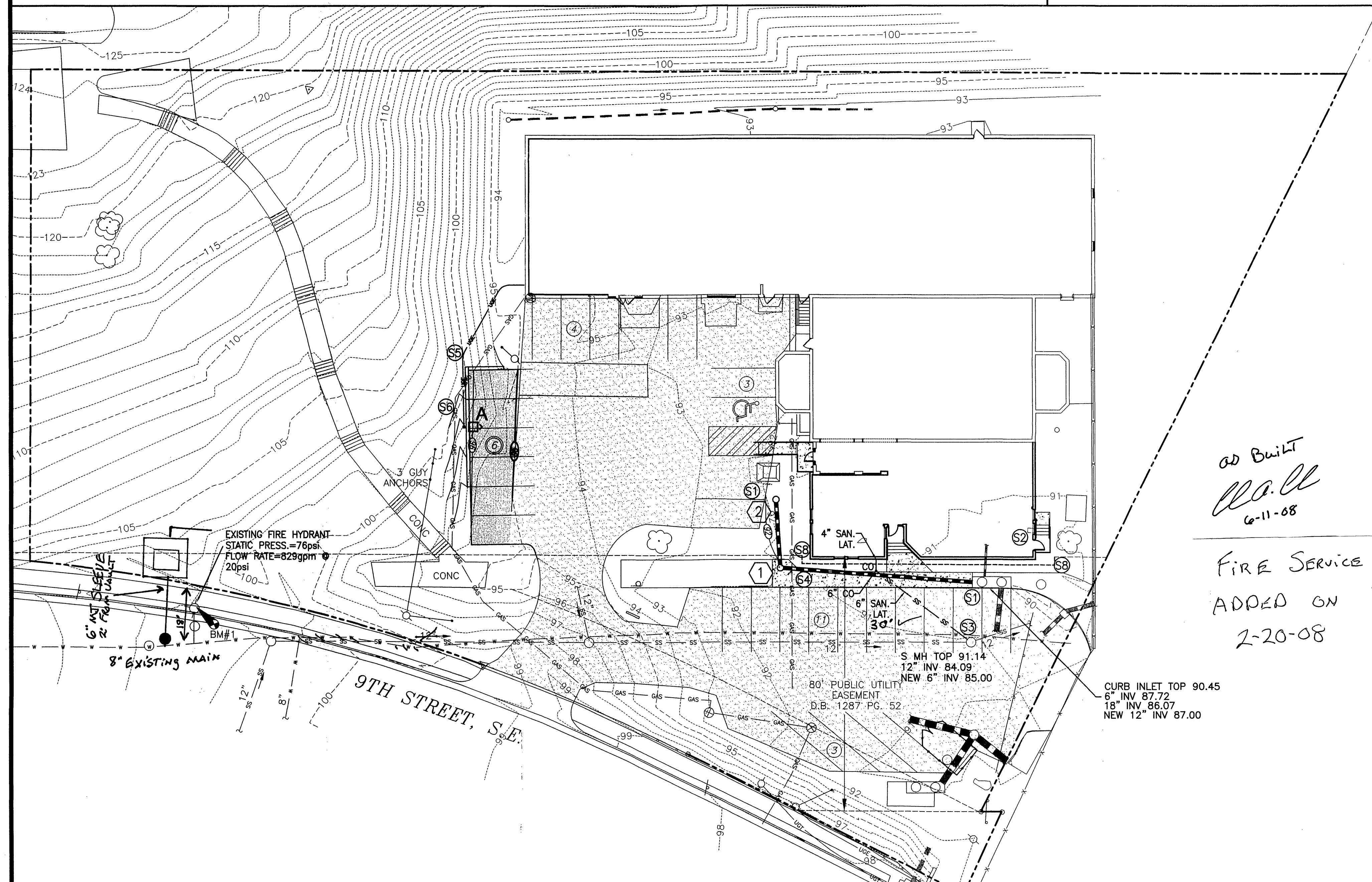
**PLACEMENT OF PAVEMENT:**  
ALL BITUMINOUS CONCRETE PAVING MATERIAL SHALL CONFORM TO THE VDOT "ROAD AND BRIDGE SPECIFICATIONS" WITH REGARD TO BITUMINOUS MATERIAL, AGGREGATES, AND MIXING METHODS. PAVEMENT PLACED IN THE VDOT RIGHT-OF-WAY SHALL BE DONE UNDER THE SUPERVISION OF A REPRESENTATIVE OF VDOT AND APPROVED FOR ACCEPTANCE BY VDOT. PAVEMENT PLACED IN PARKING AREAS SHALL BE WARRANTED BY THE PAVING CONTRACTOR FOR A PERIOD OF ONE YEAR AFTER THE POINT IN TIME WHICH TRAFFIC COMMENCES UPON IT.

ID	INLET TYPE	TOP	TOP EL.	STRUCTURE PIPE	STRUCTURE INVERT EL.	PIPE SIZE, MATERIAL AND LENGTH
①	NYLOPLAST 24" DRAIN BASIN	STD. 24" SOLID COVER	91.90	12" IN=88.00 12" OUT=87.90	87.40	12" HDPE, 60lf
②	NYLOPLAST 24" DRAIN BASIN	STD. 24" DROP-IN GRATE	91.30	12" OUT=88.32	87.82	12" HDPE, 20lf

- 51) AFTER INLET IS CLEARED OUT, DETERMINE LOCATION AND OUTFALL OF PIPES OUT OF INLET. IF PIPES ARE ALREADY ABANDONED, & NOT FUNCTIONAL, THEN REMOVE EXISTING INLET AND PIPES WITHIN THE FOOTPRINT OF THE NEW ADDITION. PROPERLY BACKFILL WITH SELECT MATERIAL AND COMPACT TO 95% MAX. DENSITY. IF EXISTING PIPES ARE ABANDONED, THEN PROCEED WITH INSTALLATION OF NEW YARD INLET AND PIPING AS SPECIFIED ON THIS SHEET. CORE HOLE IN SIDE OF EXISTING CURB INLET AND PATCH ANNUAL SPACE BETWEEN NEW PIPE AND SIDES OF INLET WITH HYDRAULIC CEMENT. NEW 12" HDPE INVERT IN=87.00.
- 52) REMOVE INLET AND SEDIMENT FILLED PORTIONS OF EXISTING PIPES. JOIN REMAINING SECTIONS OF EXISTING PIPES WITH NEW PIPE, LIKE SIZE AND MATERIAL. SPACE BETWEEN OLD AND NEW PIPES SHALL BE MADE WITH WATER TIGHT MATERIALS & EXISTING CURB INLET. WHERE DEVIATIONS IN ALIGNMENT ARE NECESSARY, INSTALL A FITTING WITH A CLEANOUT. CLEANOUTS SHALL EXTEND TO FINISHED SLAB ELEVATION AND A BRASS COVER/CAP SHALL BE INSTALLED.
- 53) TRANSITION FROM 4" SCH40 PVC TO 6" SCH40 PVC LATERAL AFTER CLEANOUT NEAR SIDEWALK. CLEANOUT INVERT ELEVATION=88.35. 6" LATERAL TO EXISTING MANHOLE. CORE HOLE IN SIDE OF MANHOLE AND PATCH WITH FLEXIBLE BOOT TO FORM WATER TIGHT CONNECTION. ALL PVC PIPING SHALL BE FULLY BEDDED FROM 4" BELOW PIPE TO 1" ABOVE PIPE WITH #68 STONE. SANITARY SEWER PIPING SHALL BE INSTALLED AT 1/4 MIN. SLOPE.
- 54) FIELD LOCATE EXISTING GAS SERVICE LINE PRIOR TO INSTALLATION OF NEW YARD DRAIN PIPING. COORDINATE DEPTHS TO PREVENT LINE CROSSING CONFLICTS.
- 55) EXTEND UNDERGROUND ELECTRIC POWER TO NEW POLE MOUNTED PARKING LOT LUMINAIRE. SEE SHEET CS FOR LIGHTING SPECIFICATIONS.
- 56) RELOCATE GAS SERVICE AS NECESSARY FOR WALL INSTALLATION. COORDINATE UNDERGROUND ELECTRIC LINE LOCATION WITH GAS SERVICE LINE LOCATION.
- 57) ALL UTILITY SERVICE LATERALS/LINES, INCLUDING ELECTRIC, SHALL BE INSTALLED UNDERGROUND.
- 58) EXISTING PUBLIC UTILITY EASEMENT TO BE MODIFIED (REDUCED) TO ACCOMMODATE NEW BUILDING ADDITION AND FOUNDATION. THE OWNER/DEVELOPER SHALL PREPARE A SEPARATE PLAT OR DEED WITH THE REDUCTION IN COORDINATION WITH WESTERN VIRGINIA WATER AUTHORITY.
- 59) SANITARY SEWER LATERAL SHALL BE PROVIDED AND INSTALLED IN ACCORDANCE WITH WYMA STANDARDS AND SPECIFICATIONS.

STORM DRAIN INSTALLATION: STORM PIPE SHALL BE LAID IN STRAIGHT LINES, AT UNIFORM GRADE BETWEEN STRUCTURES. PIPE SIZES SHALL BE AS SHOWN. PIPE SHALL PLACED ON 4" MIN. #68 STONE BEDDING. STONE BEDDING SHALL EXTEND TO 1" ABOVE TOP OF PIPE. BACKFILL SHALL BE PLACED IN LIFTS NOT EXCEEDING 8" IN COMPACTED THICKNESS, COMPACTED WITH SMALL MOBILE COMPACTOR ("WACKER"). BACKFILL MATERIAL SHALL NOT BE MUDDY IN CONSISTENCY AND TRENCHES TO BE BACKFILLED SHALL NOT CONTAIN WATER. CURB INLETS SHALL BEAR ON UNDISTURBED CUT SURFACES OF EXCAVATIONS IN ORIGINAL SOIL OR COMPACTED FILL, BEDDED ON A LEVELING BED OF CRUSHED STONE OR SAND.

1. ALL EXTERIOR LIGHTING FIXTURES SHALL BE DESIGNED, LOCATED AND ARRANGED SO AS NOT TO DIRECT GLARE ON ADJOINING STREETS OR ADJACENT PROPERTIES. THE INTENSITY AT ADJOINING STREETS OR ADJACENT PROPERTIES SHALL NOT EXCEED 0.5 FOOT CANDLES.



AD BuilT  
C.A. Cl  
6-11-68

---

FIRE SERVICE  
ADDED ON  
2-20-68

**ADDITIONS & IMPROVEMENTS**  
**BOYS & GIRLS CLUB OF ROANOKE VALLEY**  
**CITY OF ROANOKE, VIRGINIA**

Sheet No.

# C4