

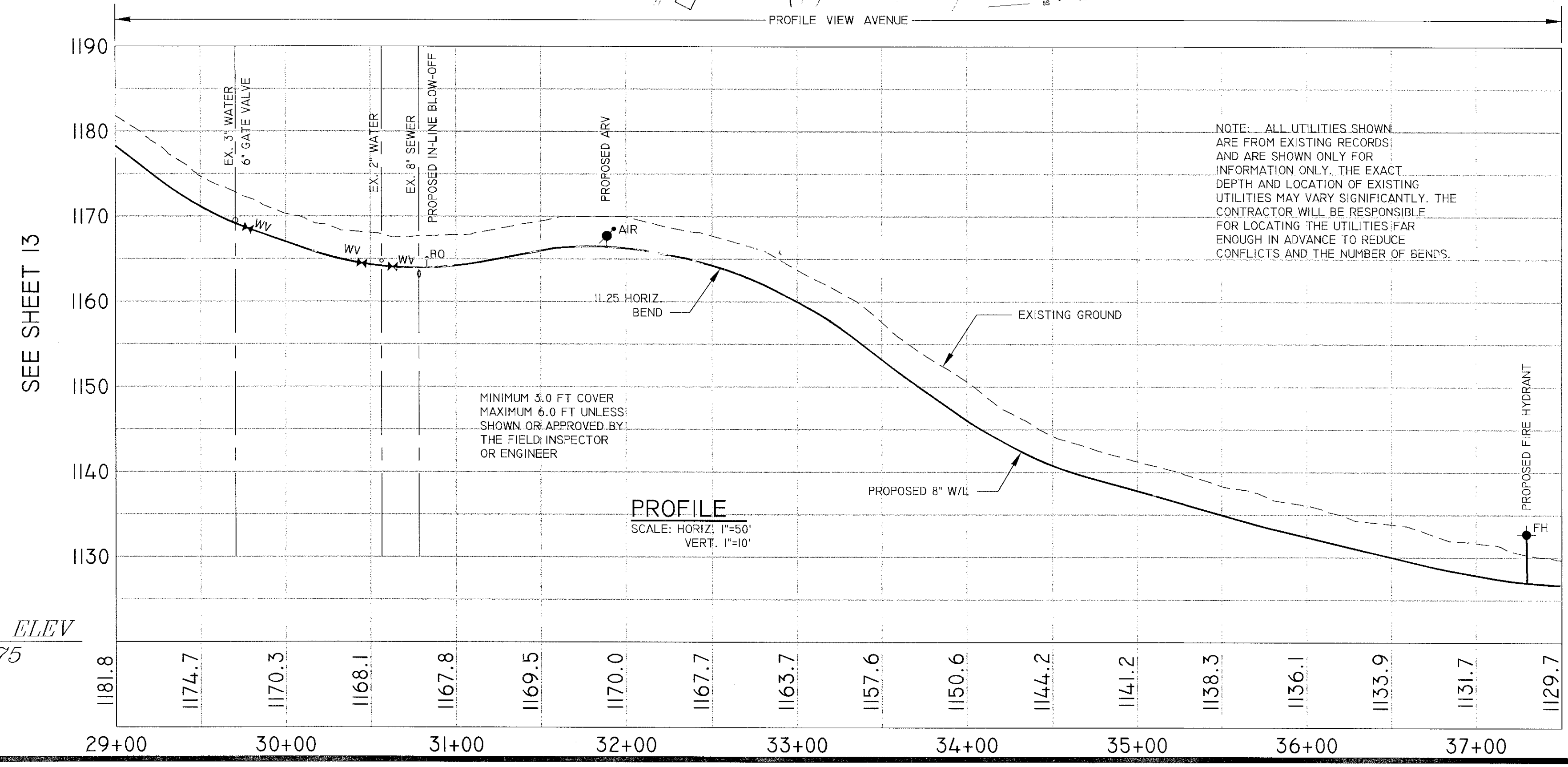
GENERAL NOTES:

ALL DRIVEWAYS ARE PAVED UNLESS OTHERWISE NOTED. SEE PAVEMENT REPLACEMENT DETAIL ON SHEET 19 OF 19.

SEE SHEET 19 OF 19 FOR VDOT PAVEMENT REPLACEMENT DETAIL.

CONTRACTOR TO CLEAN STREETS AT THE END OF EACH DAY. SAND SHALL BE USED TO PROTECT THE EXISTING PAVEMENT FROM THE CONSTRUCTION EQUIPMENT.

ALL AREAS DISTURBED SHALL BE STABILIZED AT THE END OF EACH WEEK.



NOTE: ALL UTILITIES SHOWN ARE FROM EXISTING RECORDS, AND ARE SHOWN ONLY FOR INFORMATION ONLY. THE EXACT DEPTH AND LOCATION OF EXISTING UTILITIES MAY VARY SIGNIFICANTLY. THE CONTRACTOR WILL BE RESPONSIBLE FOR LOCATING THE UTILITIES FAR ENOUGH IN ADVANCE TO REDUCE CONFLICTS AND THE NUMBER OF BENDS.

DATUM ELEV
1075

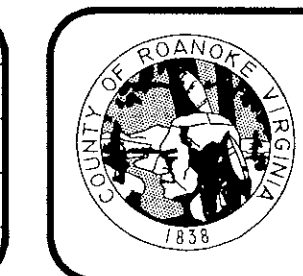


DEPARTMENT OF
COMMUNITY
DEVELOPMENT

1		
2		
3		
4		
5		
6		
NO.	REVISIONS	DATE

BRAMBLETON WATER LINE REPLACEMENT

DATE: 7/7/2000
SCALE: H, 1"= 50 FT, V, 1"= 10 FT
DRAWING BY: BWE
DESIGNED BY: BWE
APPROVED BY: GWS



UTILITY
DEPARTMENT

SHEET
14
OF
19