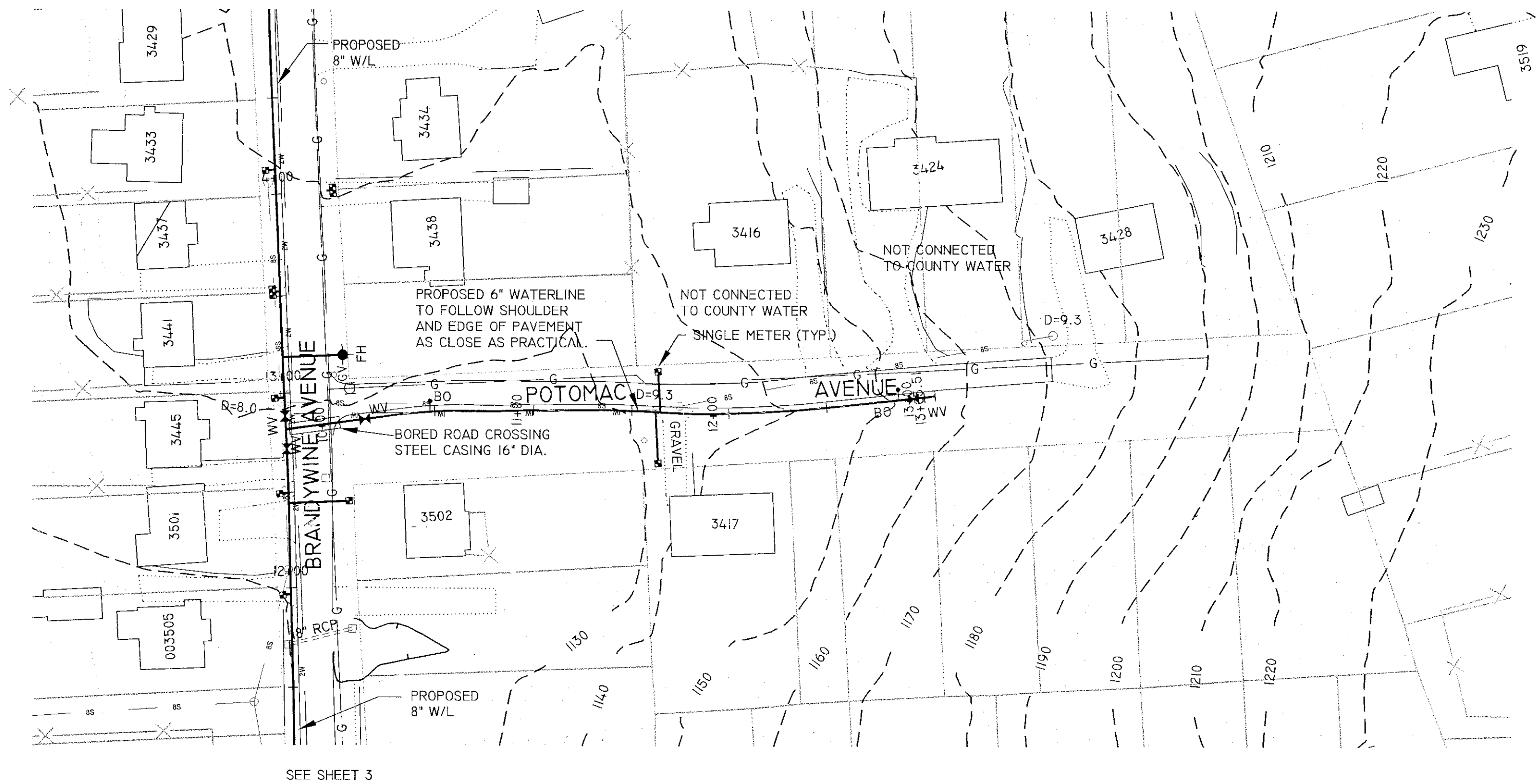
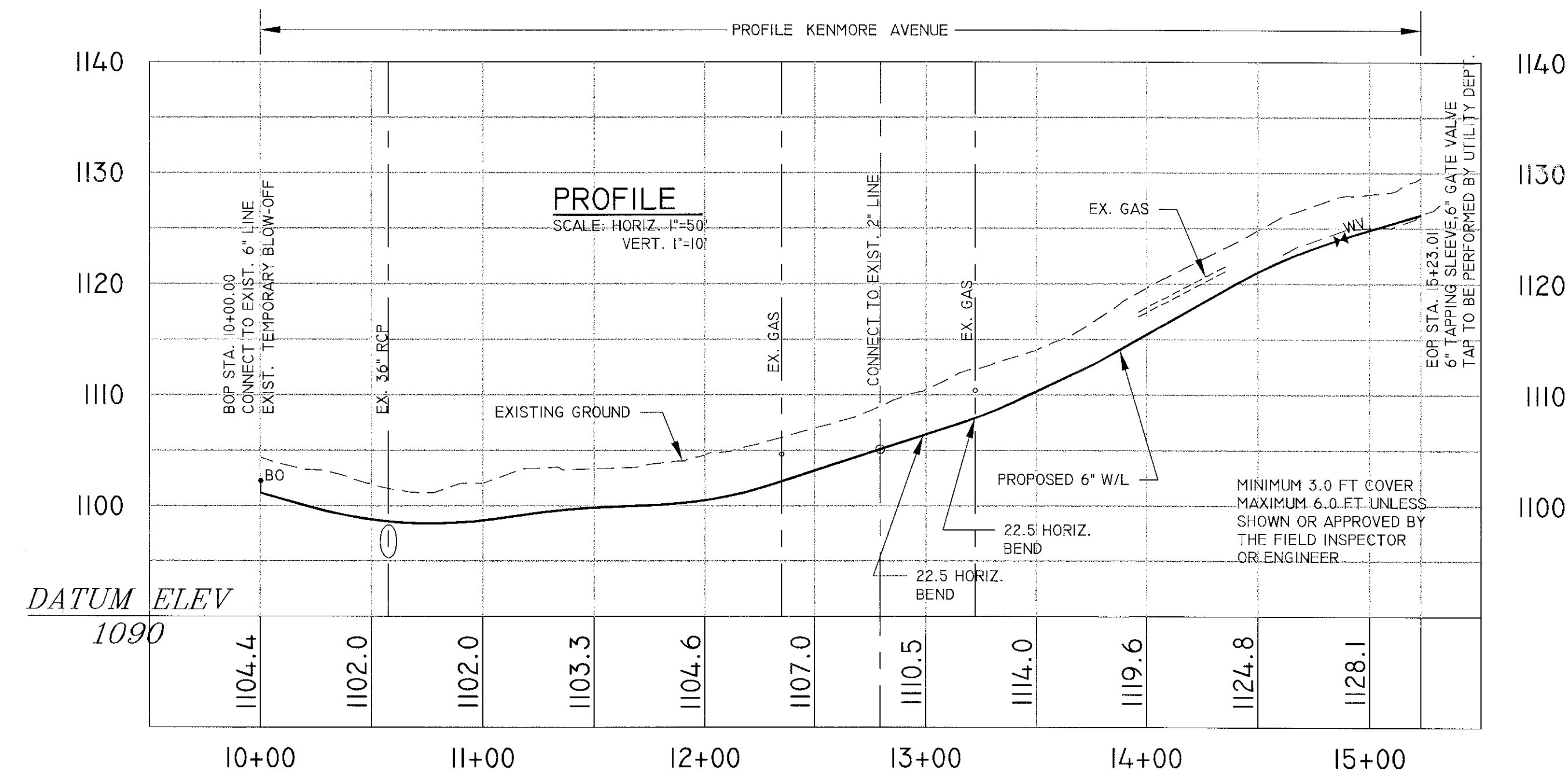
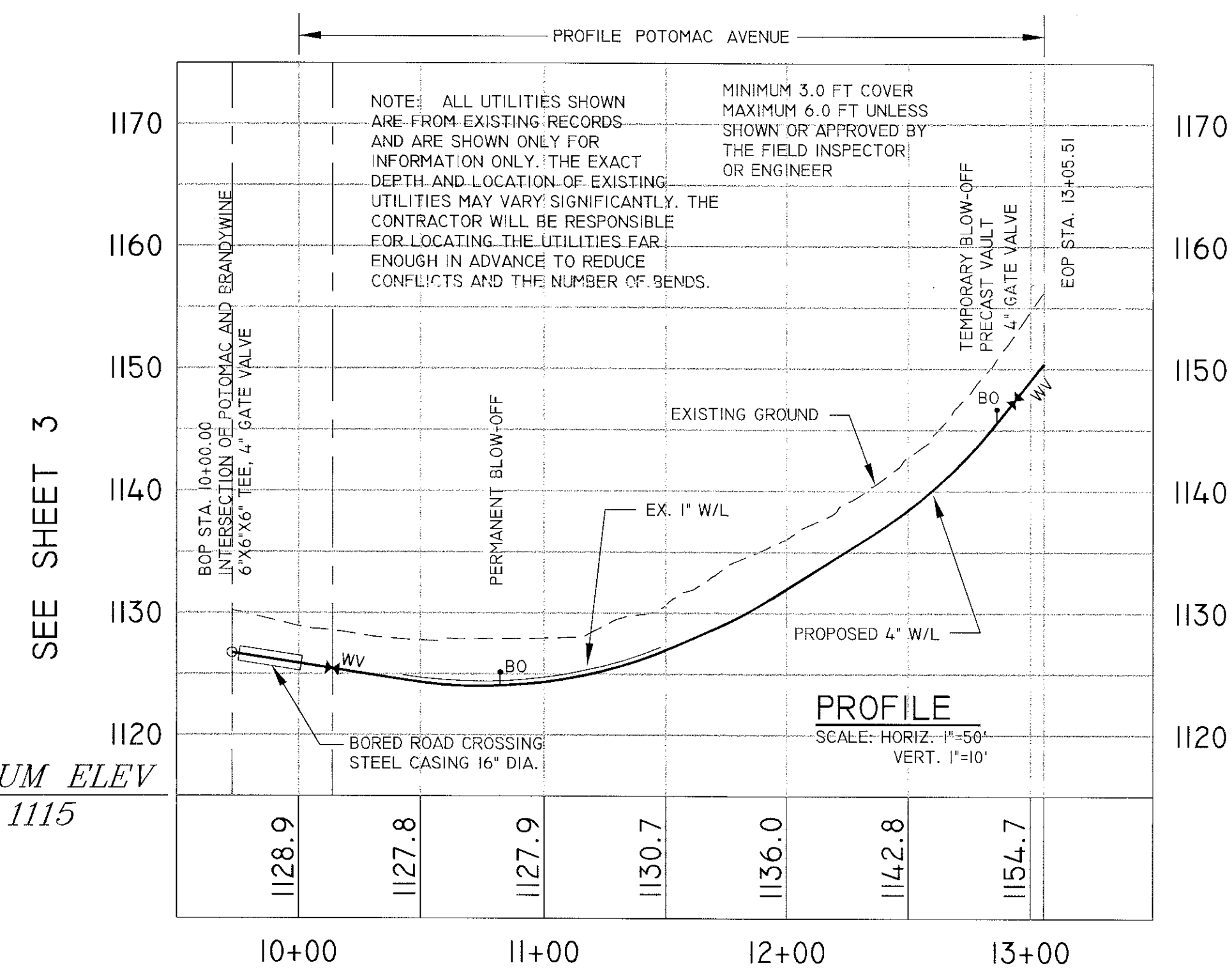


NOTE: ALL UTILITIES SHOWN ARE FROM EXISTING RECORDS AND ARE SHOWN ONLY FOR INFORMATION ONLY. THE EXACT DEPTH AND LOCATION OF EXISTING UTILITIES MAY VARY SIGNIFICANTLY. THE CONTRACTOR WILL BE RESPONSIBLE FOR LOCATING THE UTILITIES FAR ENOUGH IN ADVANCE TO REDUCE CONFLICTS AND THE NUMBER OF BENDS.



SEE SHEET 3



GENERAL NOTES:

ALL DRIVEWAYS ARE PAVED UNLESS OTHERWISE NOTED. SEE PAVEMENT REPLACEMENT DETAIL ON SHEET 19 OF 19.
SEE SHEET 19 OF 19 FOR VDOT PAVEMENT REPLACEMENT DETAIL.
CONTRACTOR TO CLEAN STREETS AT THE END OF EACH DAY. SAND SHALL BE USED TO PROTECT THE EXISTING PAVEMENT FROM THE CONSTRUCTION EQUIPMENT.
ALL AREAS DISTURBED SHALL BE STABILIZED AT THE END OF EACH WEEK.

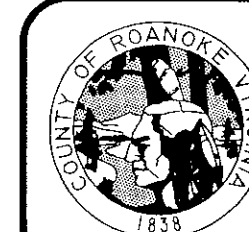


DEPARTMENT OF
COMMUNITY
DEVELOPMENT

NO.	REVISIONS	DATE
1		
2		
3		
4		
5		
6		

BRAMBLETON WATER LINE REPLACEMENT

DATE: 7/7/2000
SCALE: H, 1" = 50 FT, V, 1" = 10 FT
DRAWING BY: BWE
DESIGNED BY: BWE
APPROVED BY: GWS



UTILITY
DEPARTMENT

SHEET
17
OF
19