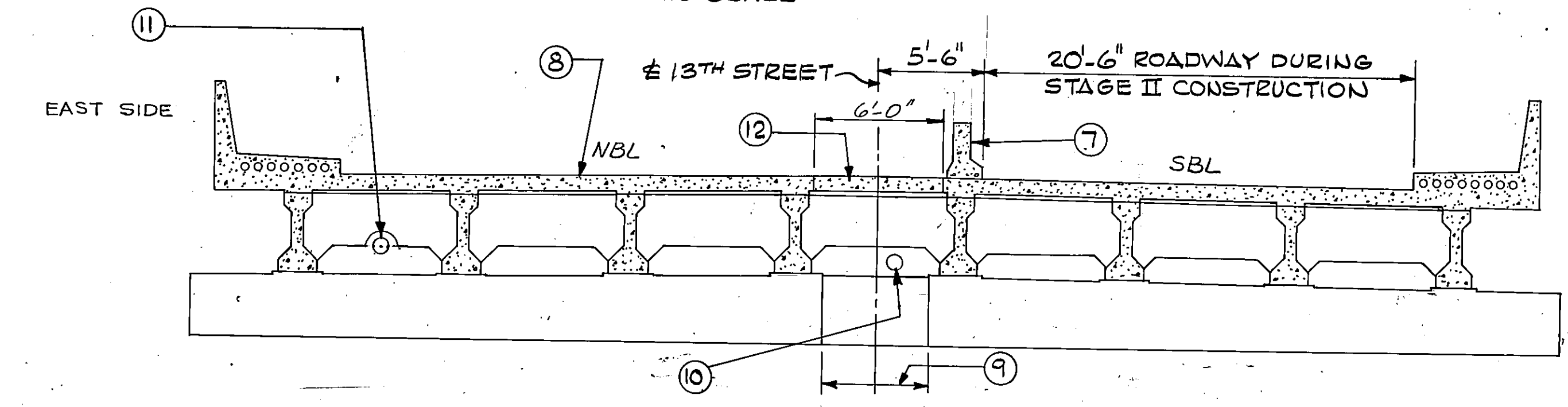
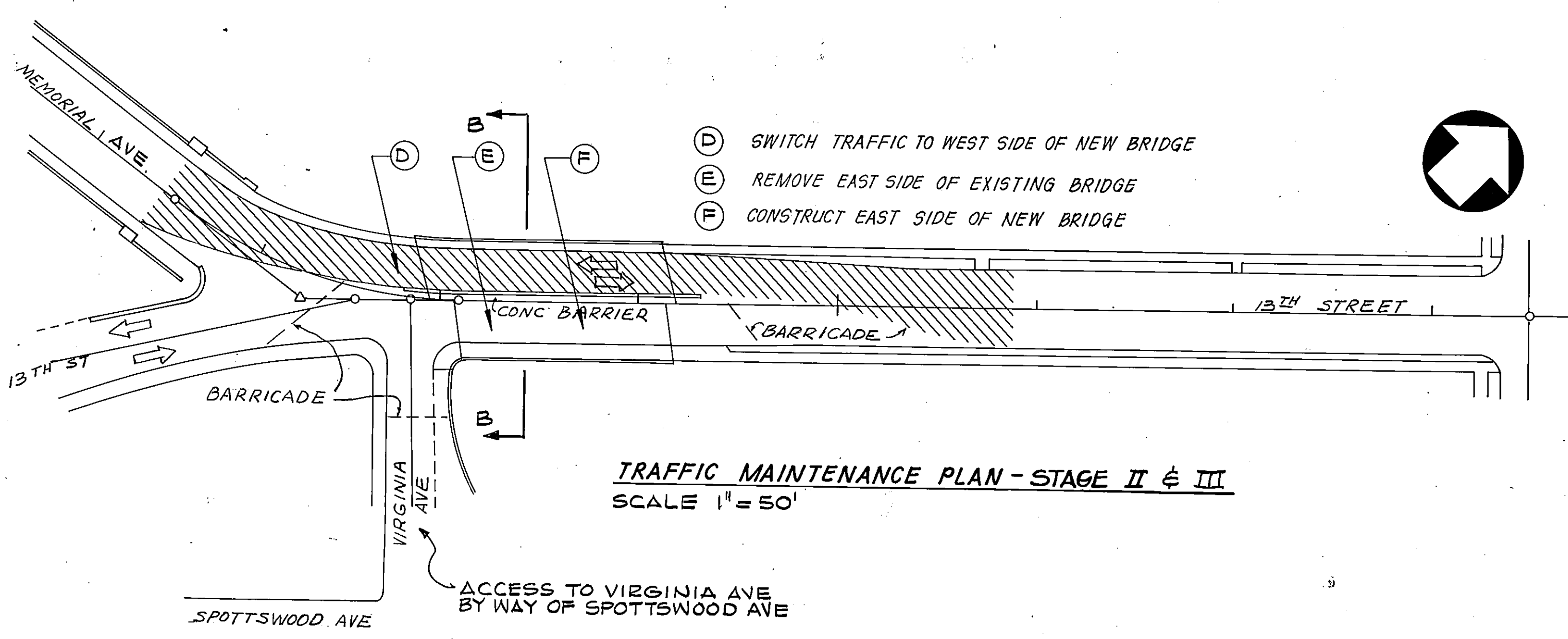
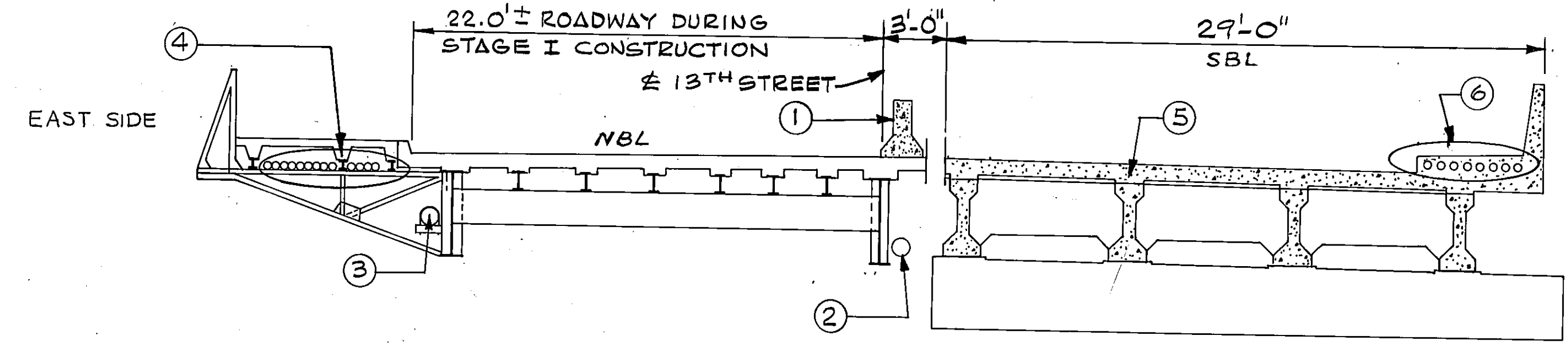
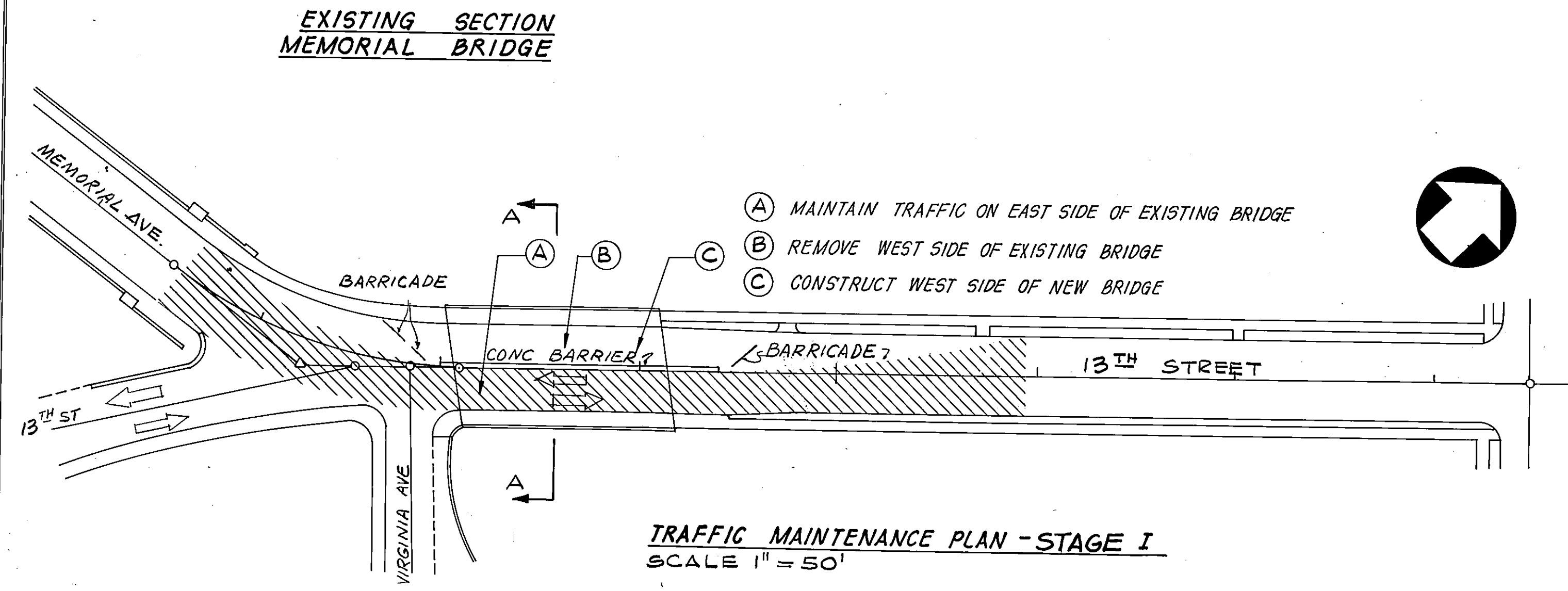


13TH STREET

- NOTES:**
- EXISTING TEMPORARY CONCRETE TRAFFIC BARRIERS ANCHORED PRIOR TO REMOVAL OF EXISTING WEST SIDE.
 - EXISTING 8" WATER MAIN REMOVED DURING STAGE I CONSTRUCTION.
 - EXISTING 10" GAS LINE REMAINS DURING STAGE I AND REMOVED BY CONTRACTOR DURING STAGE II CONSTRUCTION.
 - EXISTING TELEPHONE CONDUIT AND CABLES REMAIN DURING STAGE I CONSTRUCTION.
 - WEST SIDE OF NEW BRIDGE CONSTRUCTED.
 - TELEPHONE CABLES RELOCATED TO WEST SIDE BY C&P TELEPHONE CO. PRIOR TO STAGE II DEMOLITION AND CONSTRUCTION.
 - EXISTING TEMPORARY CONCRETE TRAFFIC BARRIERS RELOCATED AND ANCHORED TO NEW WEST SIDE.
 - EXISTING EAST SIDE REMOVED AND NEW EAST SIDE CONSTRUCTED.
 - STAGE III CONSTRUCTION OF PIER CAP - BRIDGE CLOSED TO TRAFFIC UNTIL CONCRETE STRENGTH IS 2250 PSI MIN.; USE HIGH EARLY STRENGTH CONCRETE; APPROXIMATE CLOSURE TIME 3 DAYS WHICH SHALL BE OVER A WEEKEND.
 - NEW 8" WATER MAIN FURNISHED AND INSTALLED BY CONTRACTOR.
 - NEW 6" GAS LINE FURNISHED AND INSTALLED BY ROANOKE GAS CO.
 - STAGE III CONSTRUCTION OF SPAN 2 SLAB - BRIDGE CLOSED TO TRAFFIC UNTIL CONCRETE STRENGTH IS 3000 PSI; USE HIGH EARLY STRENGTH CONCRETE; APPROXIMATE CLOSURE TIME 7 DAYS.



REVISION	DATE	DESCRIPTION	BY	APP.
DESIGNED	HWP	13TH STREET OVER NW RAILWAY CITY OF ROANOKE, VIRGINIA		
DRAWN	JLS			
CHECKED	MSA/RWF			
APPROVED	HCH	PROFILE AND TRAFFIC MAINTENANCE		
SUBMITTED	JLS			
HAYES, SEAY, MATTERN & MATTERN ARCHITECTS - ENGINEERS - PLANNERS		SCALE NO SCALE	COMM. NO. 2802A	
		DATE JULY 1983	SHEET 3 OF 20	