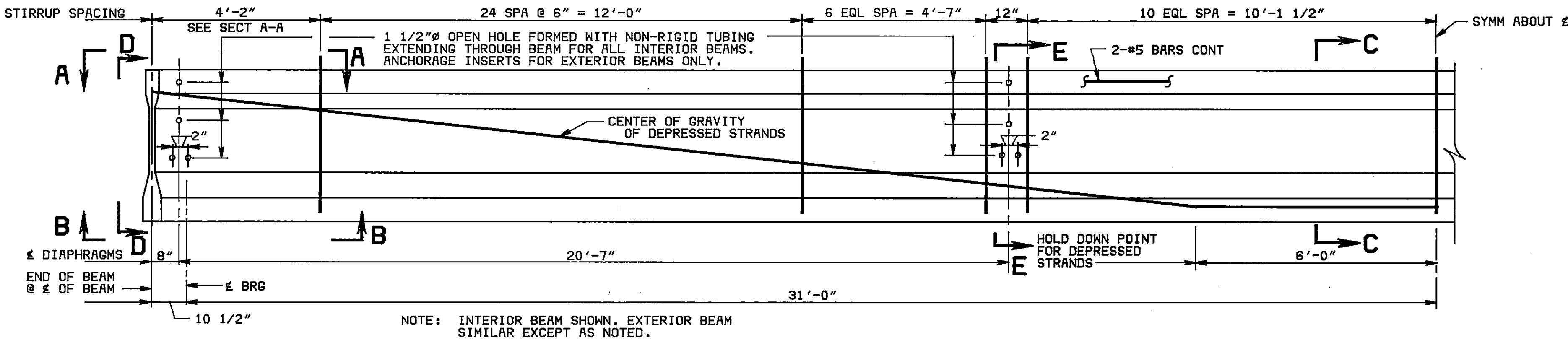
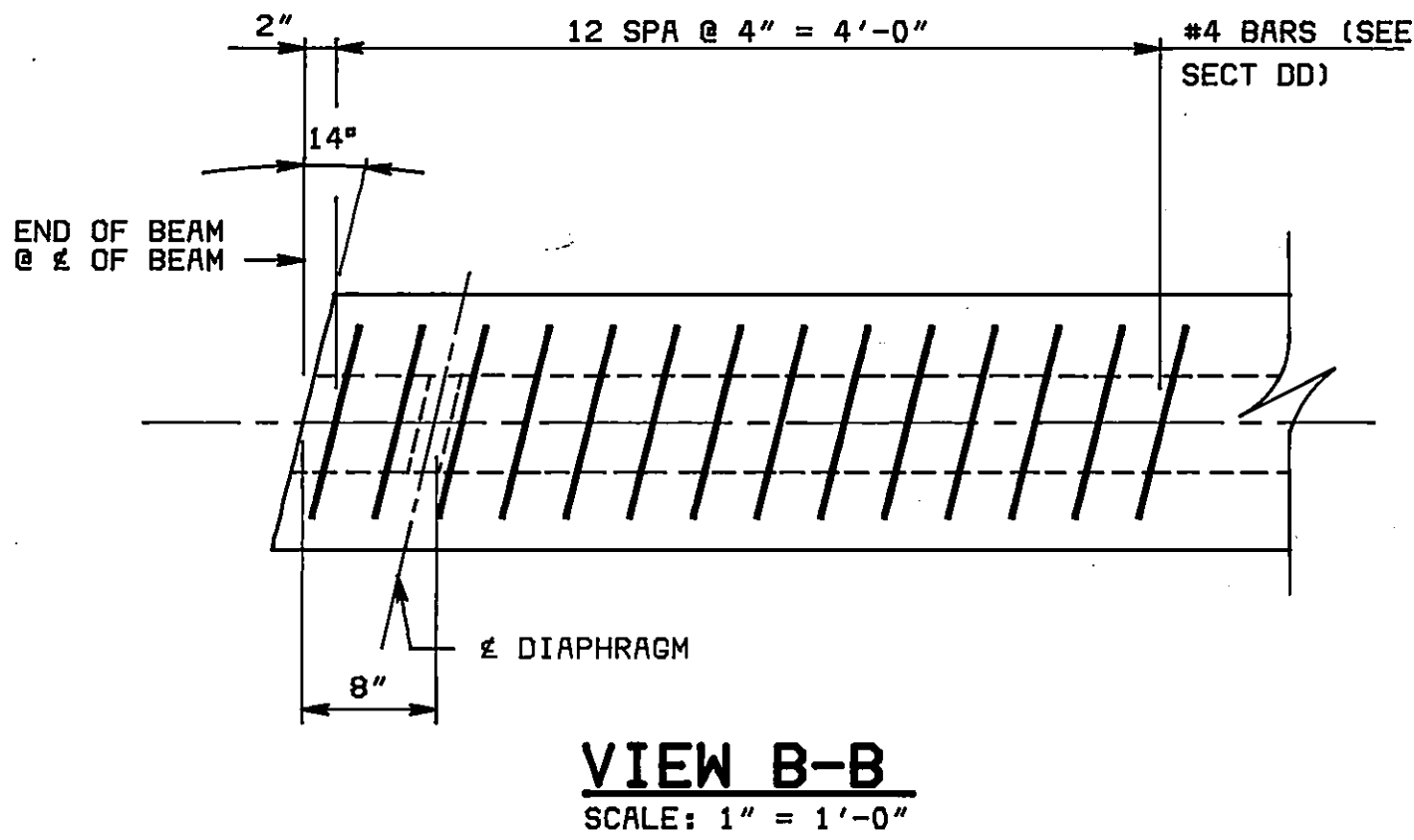
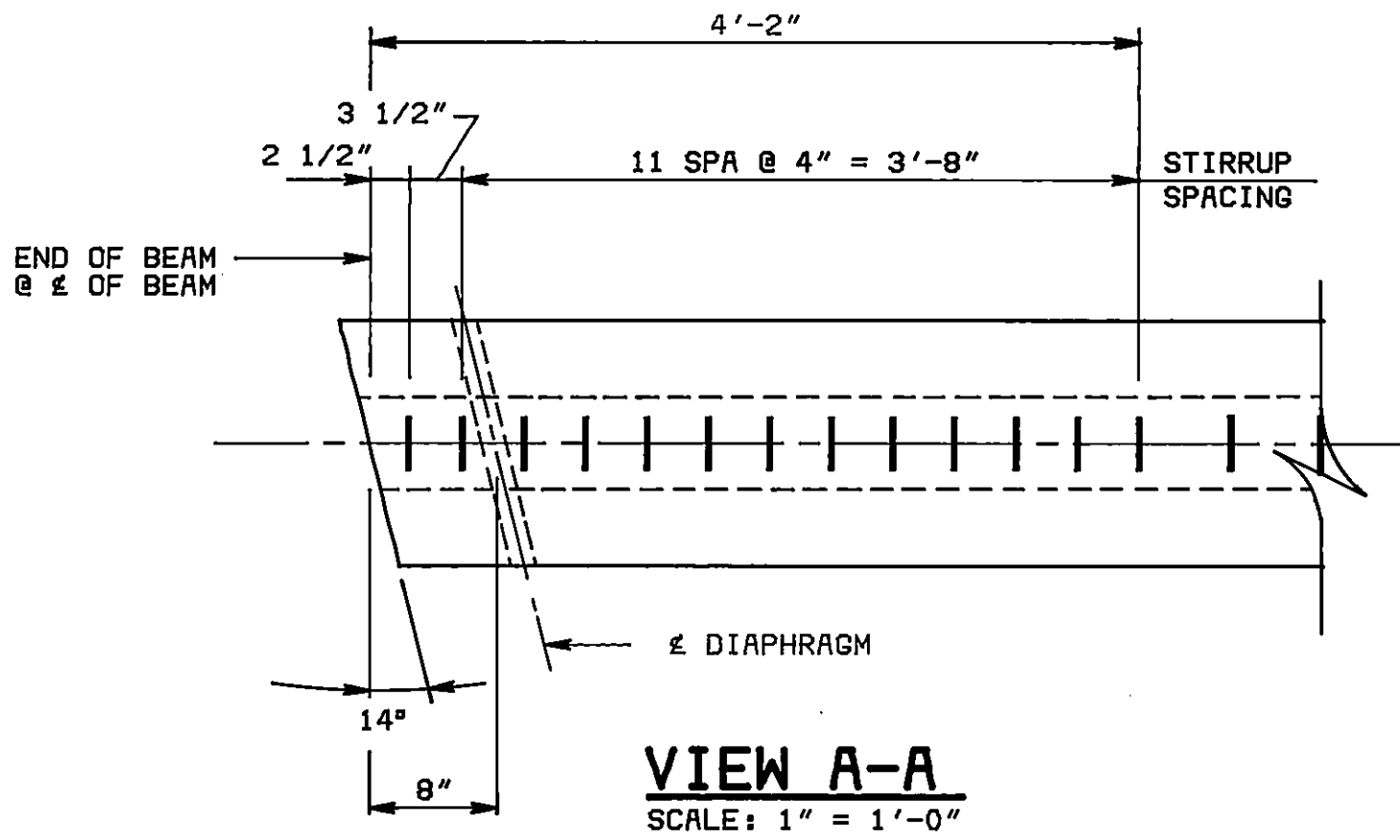


F.H.W.A. REGION	STATE	FEDERAL AID		STATE		SHEET NO.	TOTAL SHEETS
		ROUTE	PROJECT	ROUTE	PROJECT		

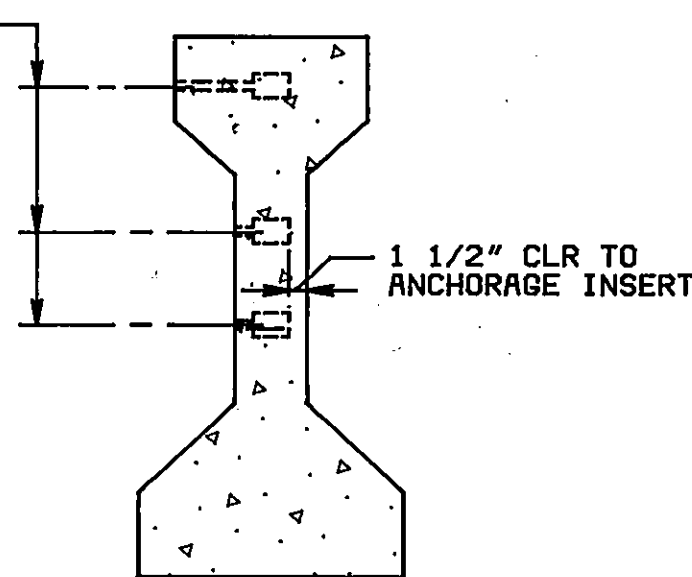


HALF SIDE ELEVATION - SPAN 2 BEAM
SCALE: 1/2" = 1'-0"

NOTE: SEE SHEET 15 FOR DETAILS OF EMBEDDED INSERT PLATE AT BEARING

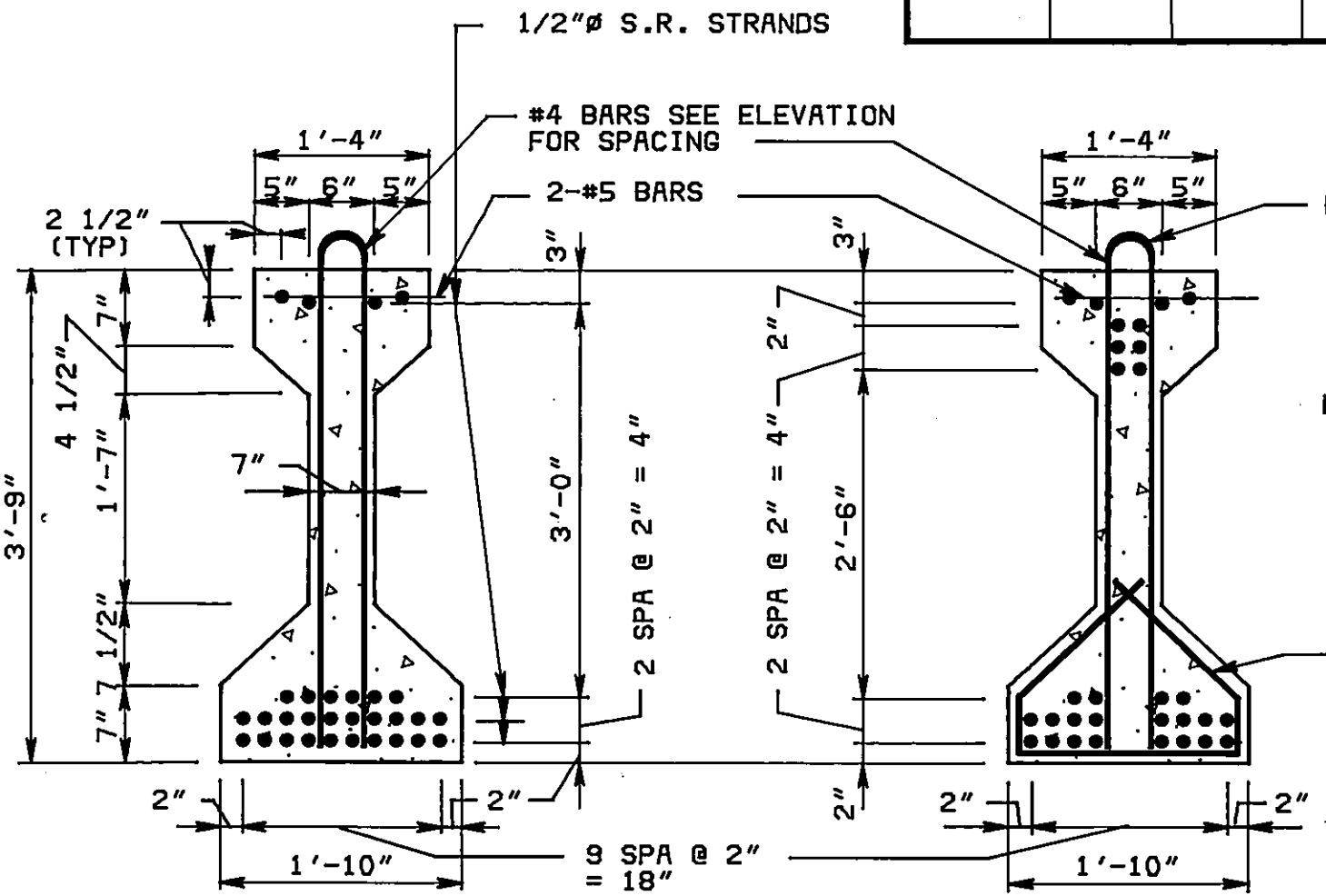


1 1/2"Ø OPEN HOLE FORMED WITH NON-RIGID TUBING EXTENDING TO ANCHORAGE INSERT



NOTE: SECTION FOR EXTERIOR BEAM ONLY.

SECTION C-C
SCALE: 3/4" = 1'-0"

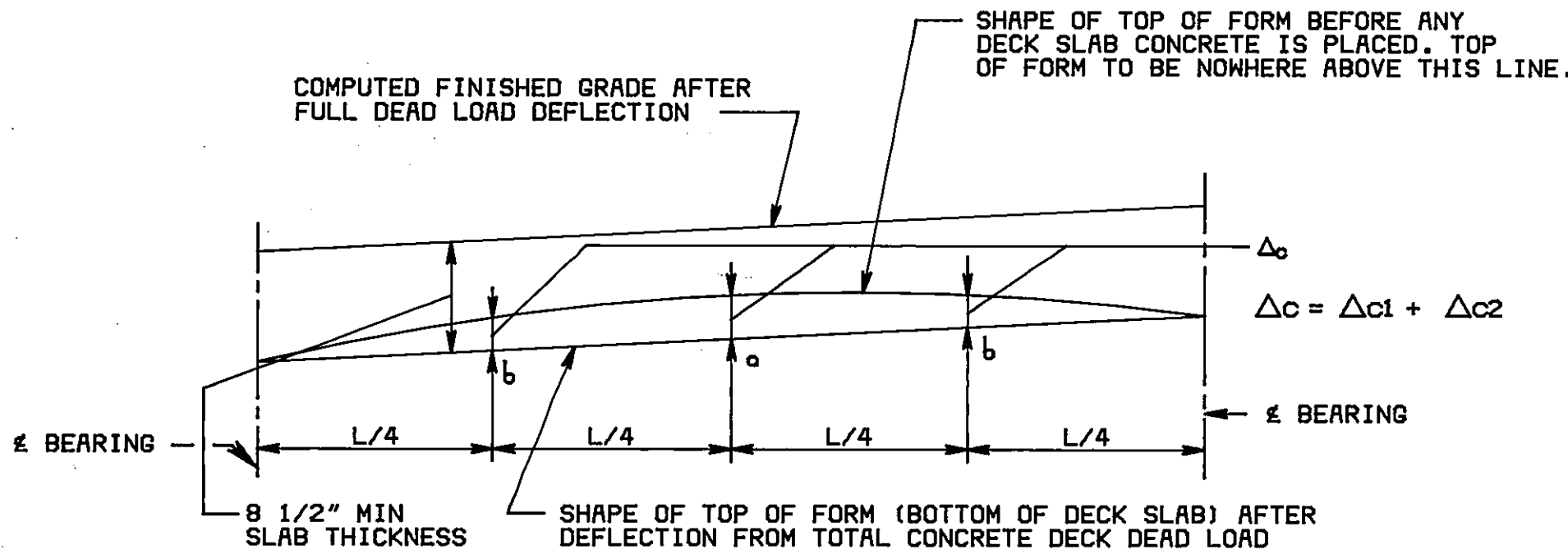


NOTE: 28-1/2"Ø STRANDS SHALL BE S.R. UNCOATED GRADE 270 PRESTRESSING STRANDS. PRESTRESSING FORCE 28,910 POUNDS PER STRAND. TOTAL PRESTRESSING FORCE 809,480 POUNDS.

NOTE: RECESS ENDS OF ALL BEAMS 1 1/2" DEEP AROUND STRANDS. CLIP STRANDS AND FILL RECESS WITH EPOXY MORTAR.

SECTION C-C
SCALE: 3/4" = 1'-0"

SECTION D-D
SCALE: 3/4" = 1'-0"



THE ABOVE DEFLECTIONS ARE THOSE ANTICIPATED TO OCCUR IN THE BEAM UPON PLACEMENT OF THE CONCRETE DECK, BOLSTERS, DIAPHRAGMS, PARAPETS AND SIDEWALKS.

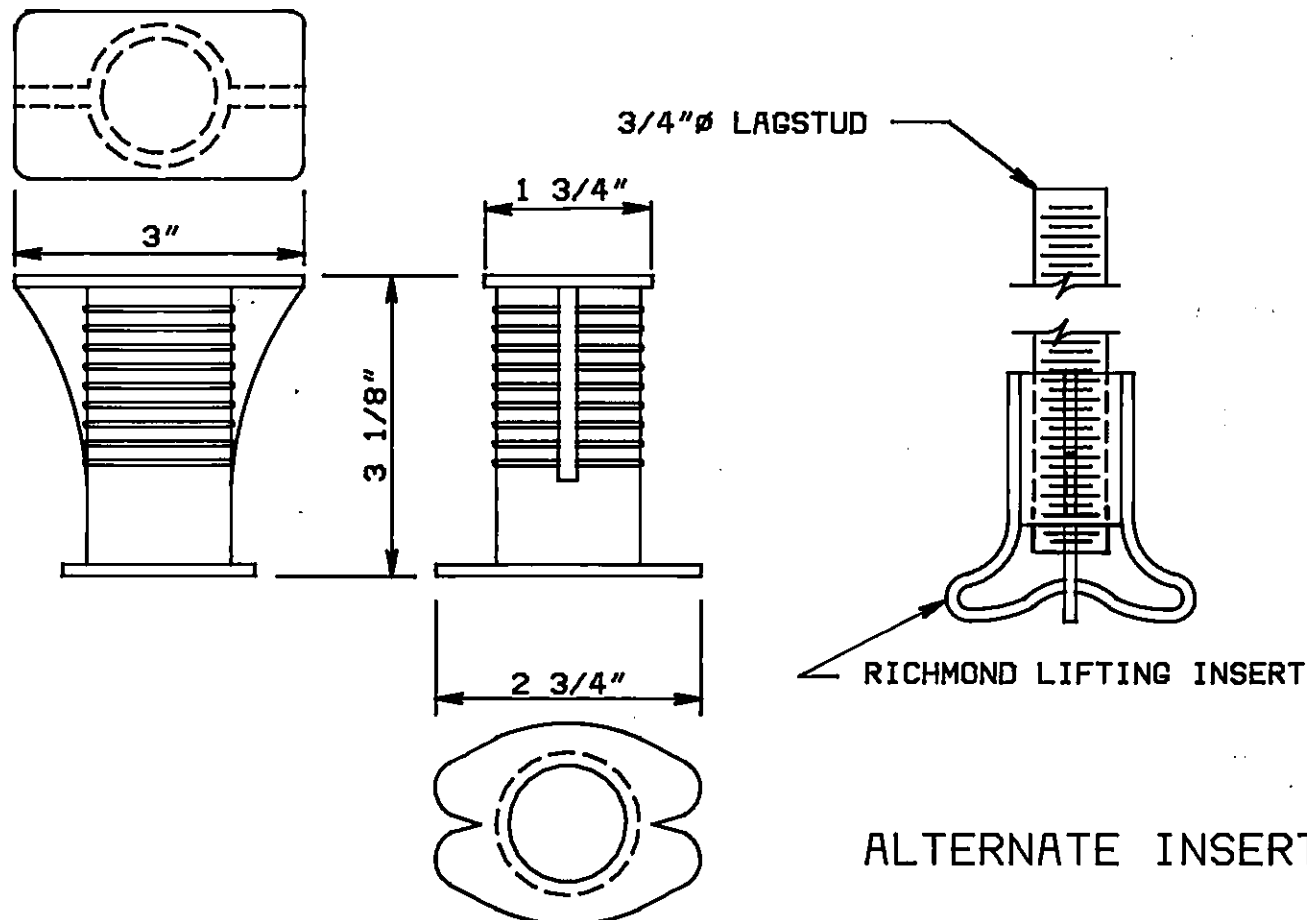
ADJUSTMENT OF DECK SLAB FORMS TO CORRECT FOR DEAD LOAD DEFLECTIONS SHALL BE MADE BY VARYING THICKNESS OF CONCRETE BOLSTER BETWEEN SLAB AND BEAM WITHOUT ALTERATION OF SLAB THICKNESS.

BEAM	ANTICIPATED DEAD LOAD DEFLECTION			
	AT a		AT b	
	Δc1	Δc2	Δc1	Δc2
A	3/4"	1/16"	9/16"	1/16"
B	3/4"	0"	9/16"	0"

Δc1= DEFLECTION OF BEAM FROM DEAD LOAD OF CONCRETE DECK SLAB, BOLSTERS AND DIAPHRAGMS AND DOES NOT INCLUDE THE DEFLECTION OF THE BEAM FROM ITS OWN WEIGHT.

Δc2= DEFLECTION OF COMPOSITE SECTION FROM DEAD LOAD (E.G., PARAPET AND SIDEWALK ADDED AFTER DECK SLAB IS CAST).

DEAD LOAD DEFLECTION DIAGRAM
NO SCALE



THREADED INSERT FOR 7/8"Ø BOLT

NOTE: THREADED INSERT, WHEN EMBEDDED AS SHOWN, SHALL DEVELOP FULL STRENGTH OF 7/8"Ø THREADED BOLT (ASTM A-307).

ANCHORAGE INSERTS
NO SCALE

REVISION	DATE	DESCRIPTION	BY	APP
DESIGNED	HWP	13TH STREET OVER NW RAILWAY CITY OF ROANOKE, VIRGINIA PRESTRESSED BEAM DETAILS		
DRAWN	DAM			
CHECKED	RWF			
APPROVED	HALL			
SUBMITTED	10/24			
HAYES, SEAY, MATTERN & MATTERN ARCHITECTS - ENGINEERS - PLANNERS ROANOKE, VIRGINIA		SCALE AS NOTED	DATE JULY 1983	COMM. NO. 2802A SHEET 13 OF 20