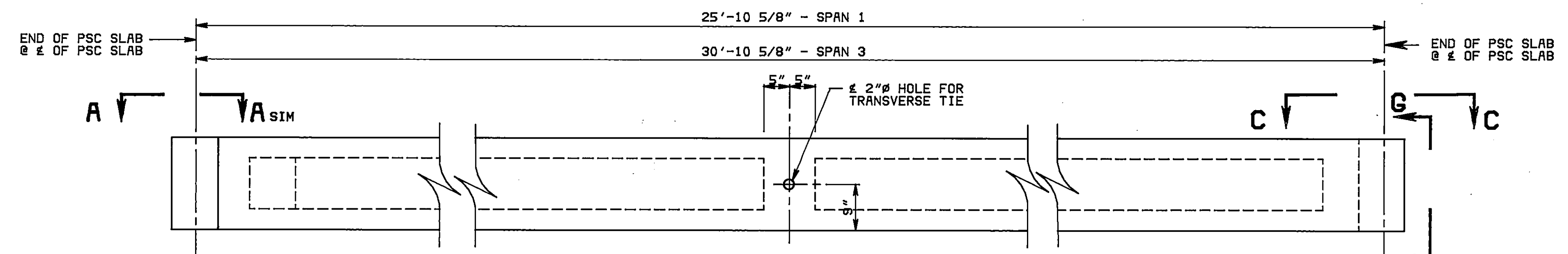
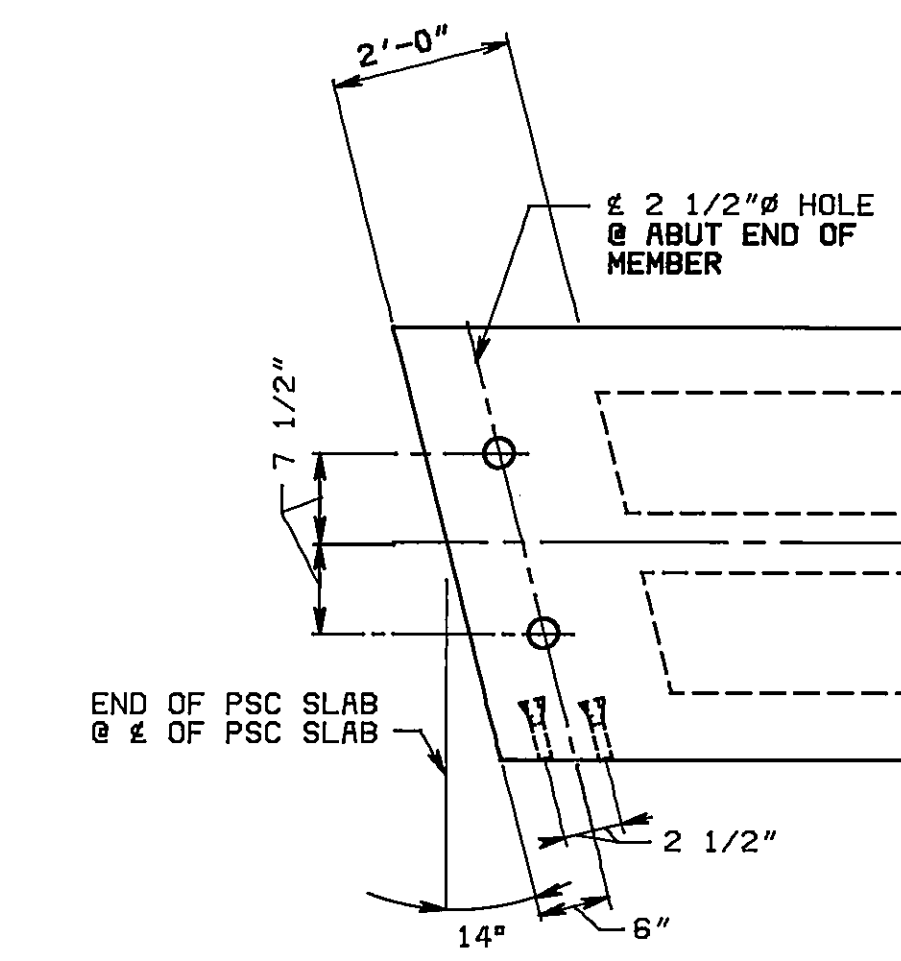


| F.H.W.A. REGION | STATE | FEDERAL AID | | STATE | | SHEET NO. | TOTAL SHEETS |
|--------------------|-------|-------------|---------|-------|---------|--------------|-----------------|
| | | ROUTE | PROJECT | ROUTE | PROJECT | | |
| | | | | | | | |



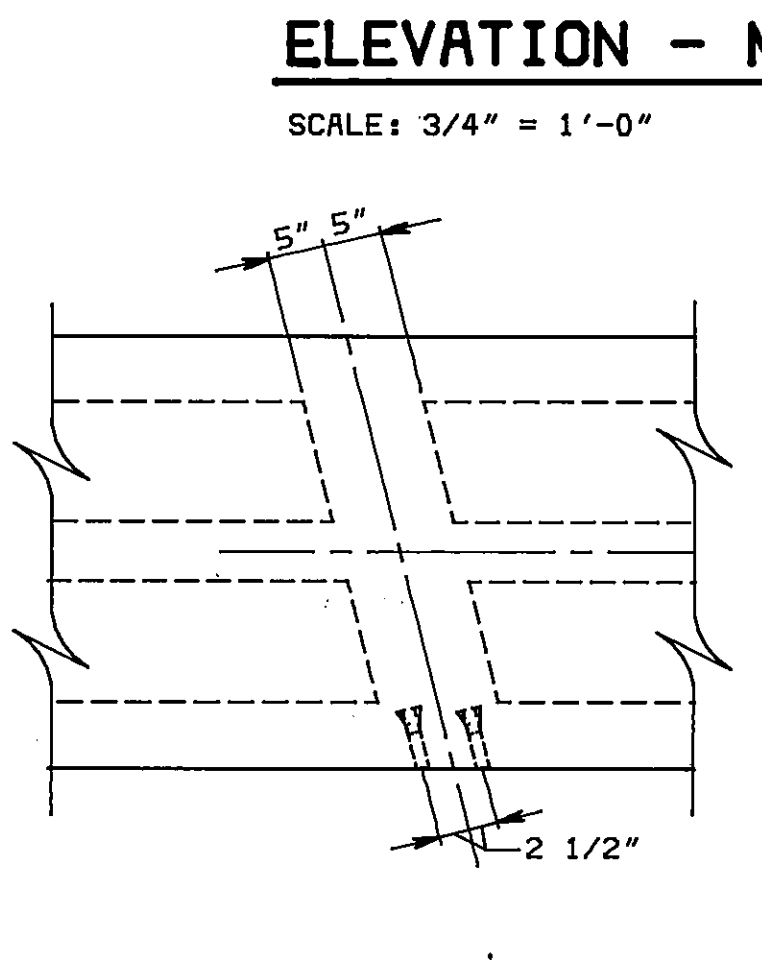
ELEVATION - MEMBER A

SCALE: 3/4" = 1'-0"



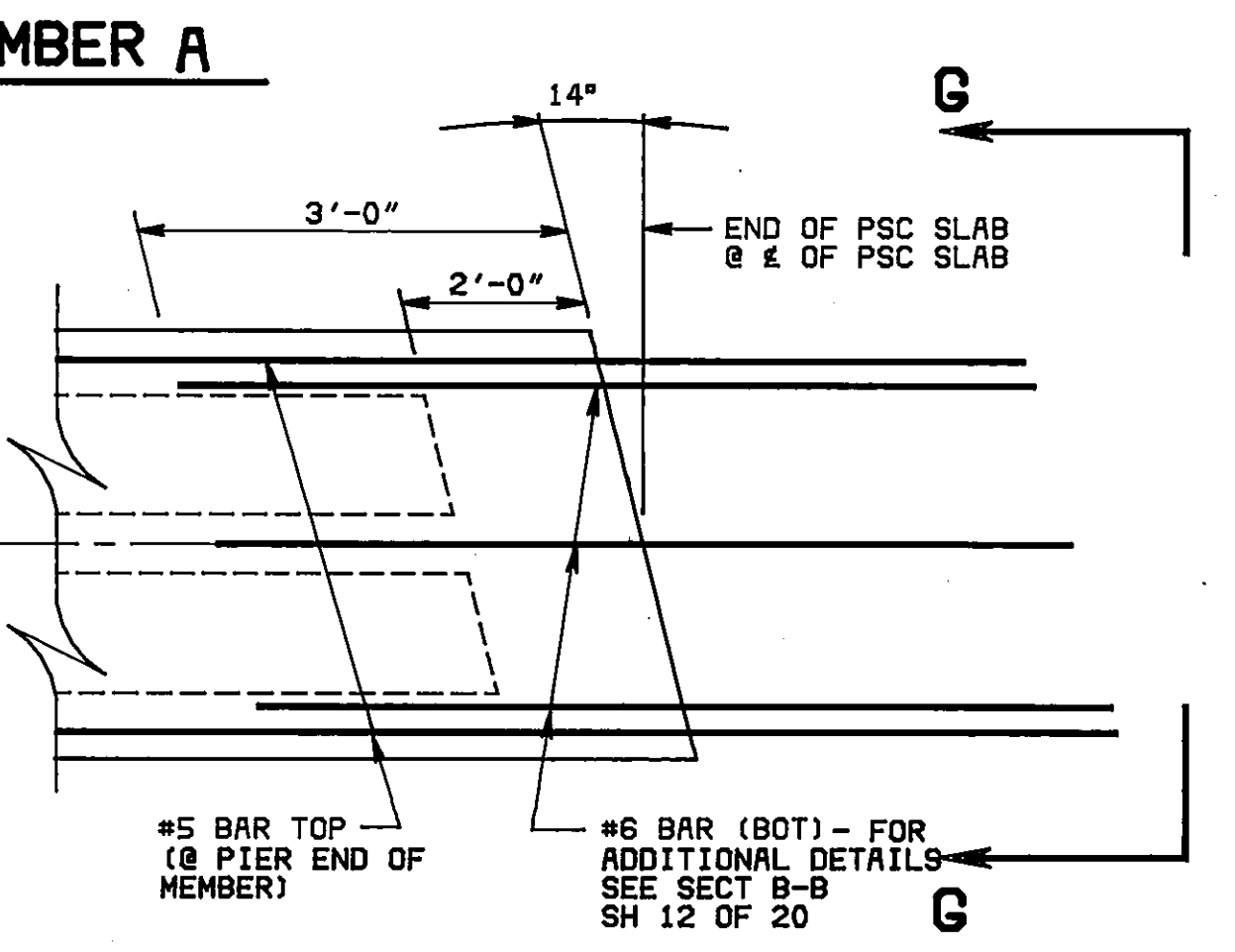
VIEW A-A

SCALE: 3/4" = 1'-0"



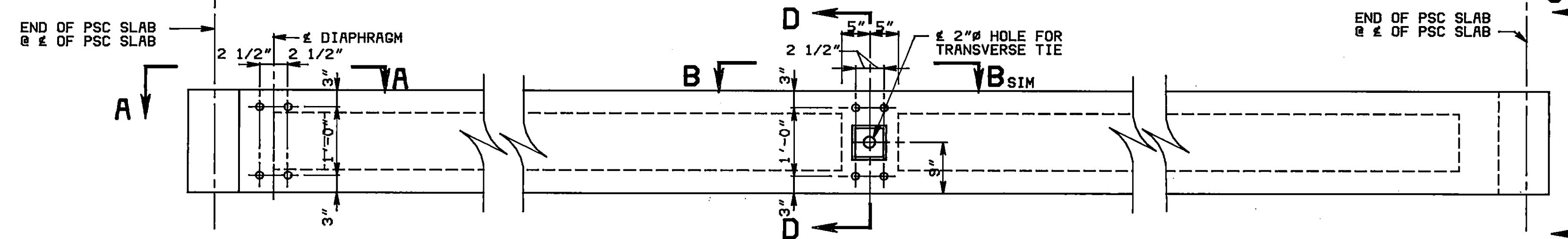
VIEW B-B

SCALE: 3/4" = 1'-0"



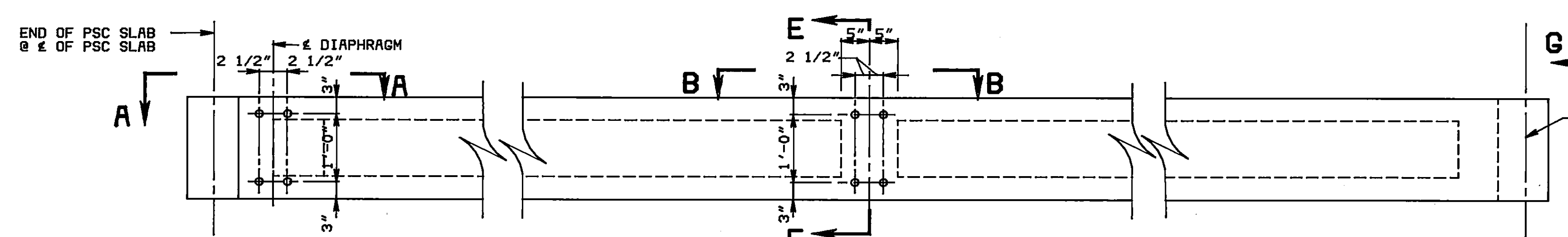
VIEW C-C

SCALE: 3/4" = 1'-0"



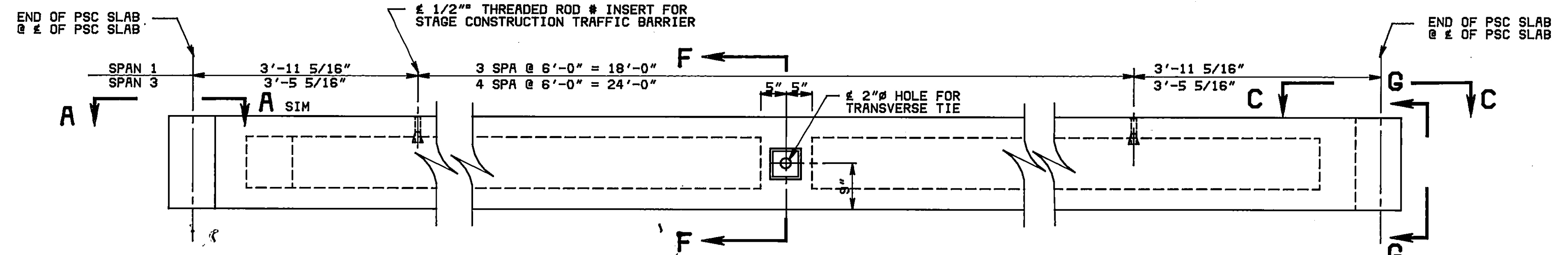
ELEVATION - MEMBER B

SCALE: 3/4" = 1'-0"



ELEVATION - MEMBER C

SCALE: 3/4" = 1'-0"

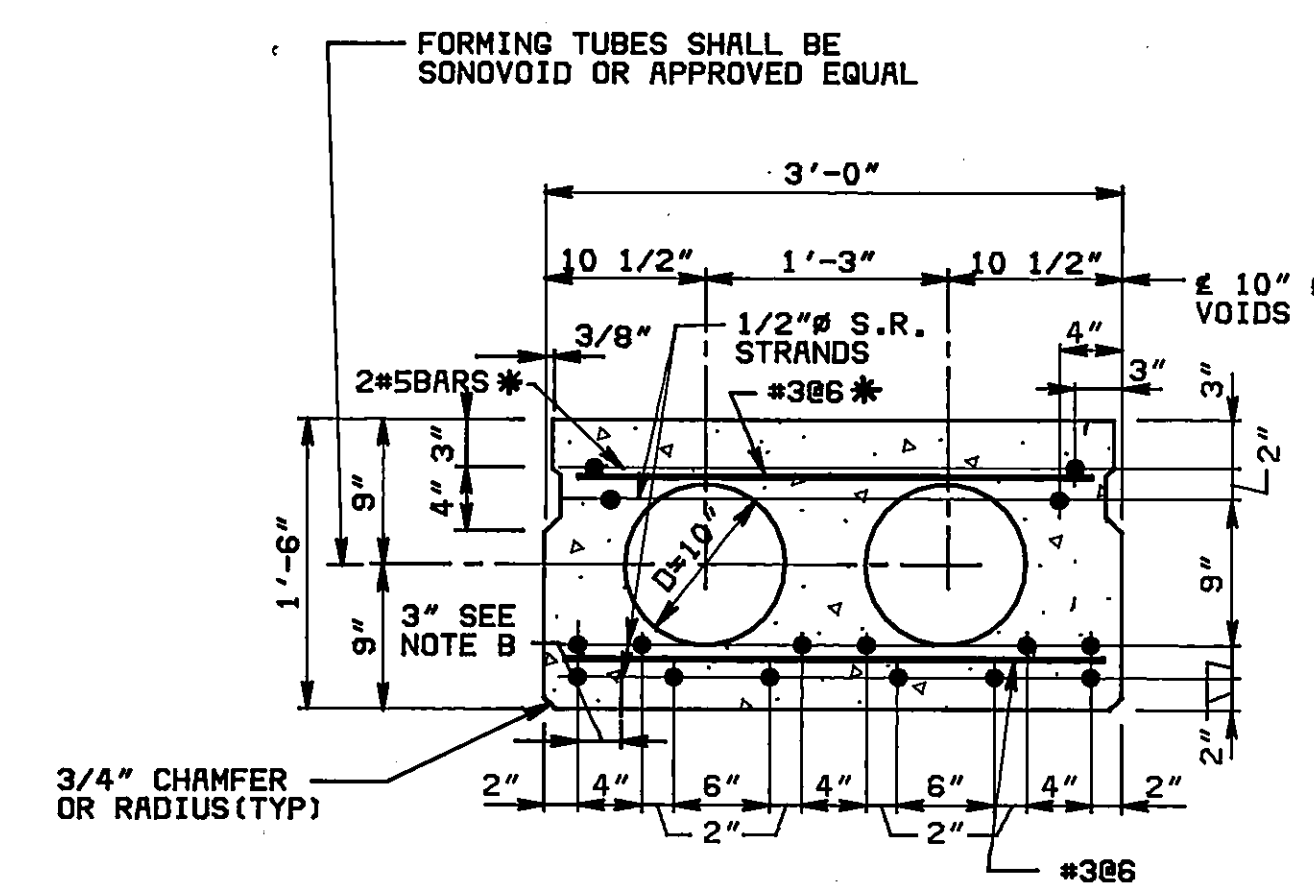


ELEVATION - MEMBER D

SCALE: 3/4" = 1'-0"

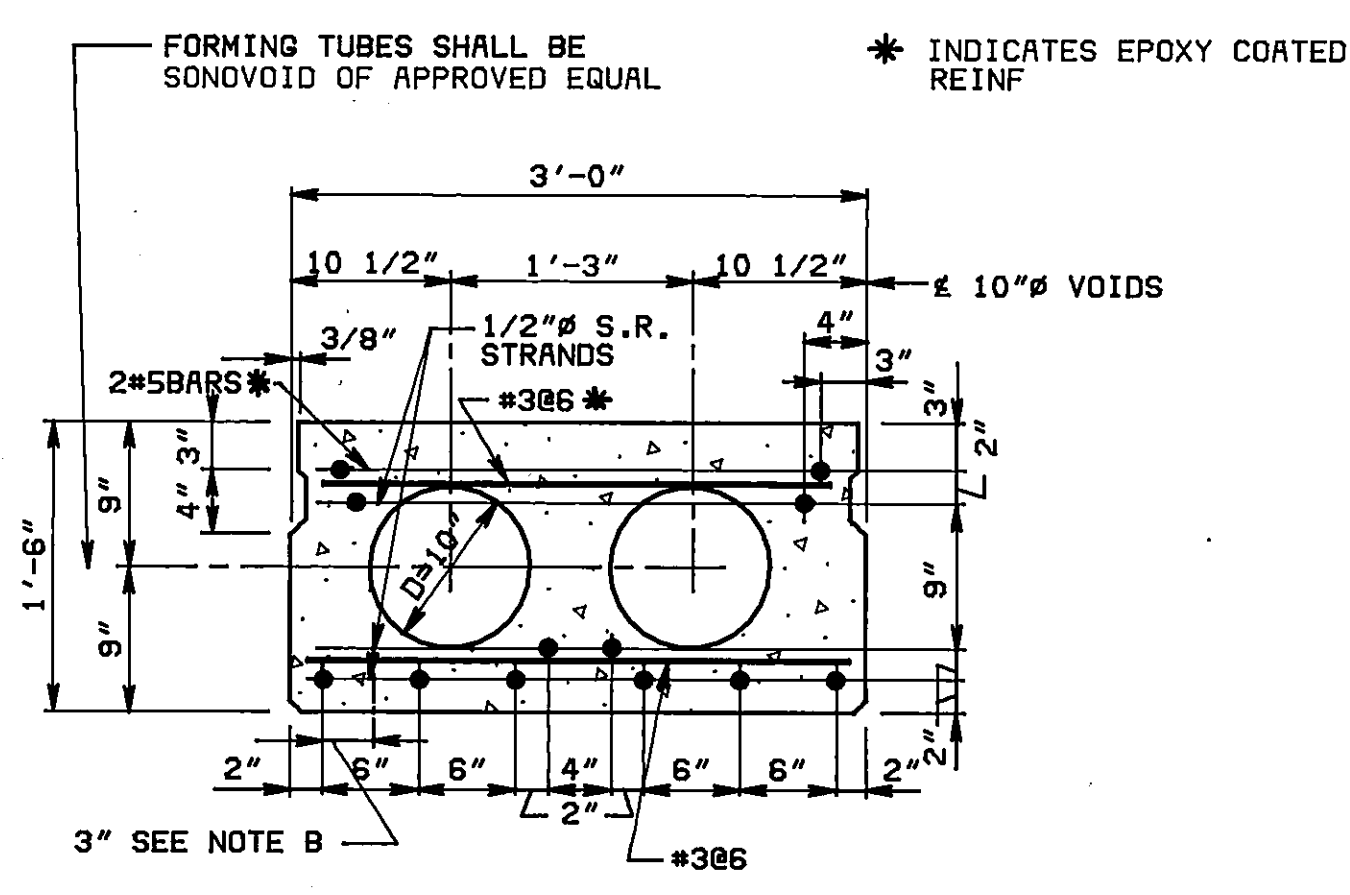
NOTE: REINF STEEL, PRESTRESSING STRANDS & DIMENSIONS ARE SIMILAR TO MEMBER A FOR ALL MEMBERS UNLESS OTHERWISE SHOWN OR NOTED

NOTE B: PROVIDE INSERT FOR 3/4" BOLT FOR GAS LINE SUPPORT AT MID SPAN OF SPANS 1 & 3. SEE SHEET 11 OF 20 FOR LOCATION OF GAS LINE. PROVIDE INSERT FOR 7/8" BOLT FOR WATER MAIN SUPPORT. SEE SHEET 6 OF 20 FOR LOCATION & SPACING OF WATER MAIN SUPPORTS.



NOTE: 14-1/2" STRANDS SHALL BE S.R. UNCOATED GRADE 270 PRESTRESSING STRANDS. PRESTRESSING FORCE 289,910 POUNDS PER STRAND. TOTAL PRESTRESSING FORCE 404,740 POUNDS.

PSC SLAB - SPAN 3

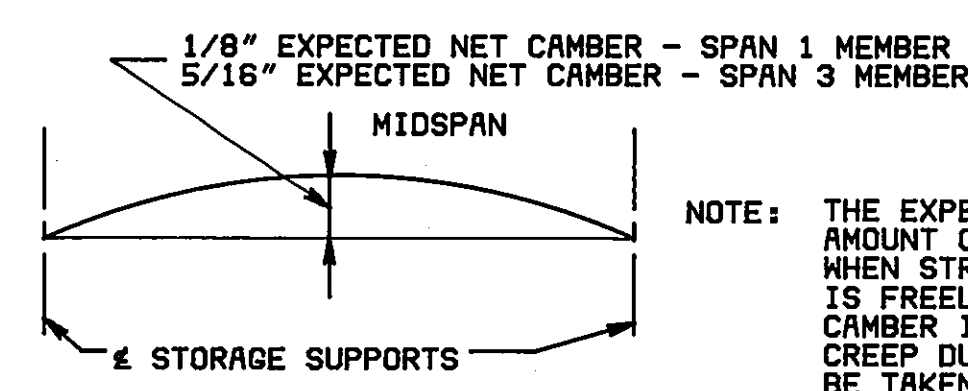


NOTE: 10-1/2" STRANDS SHALL BE S.R. UNCOATED GRADE 270 PRESTRESSING STRANDS. PRESTRESSING FORCE 289,910 POUNDS PER STRAND. TOTAL PRESTRESSING FORCE 289,100 POUNDS.

PSC SLAB - SPAN 1

TYPICAL STRAND PATTERNS

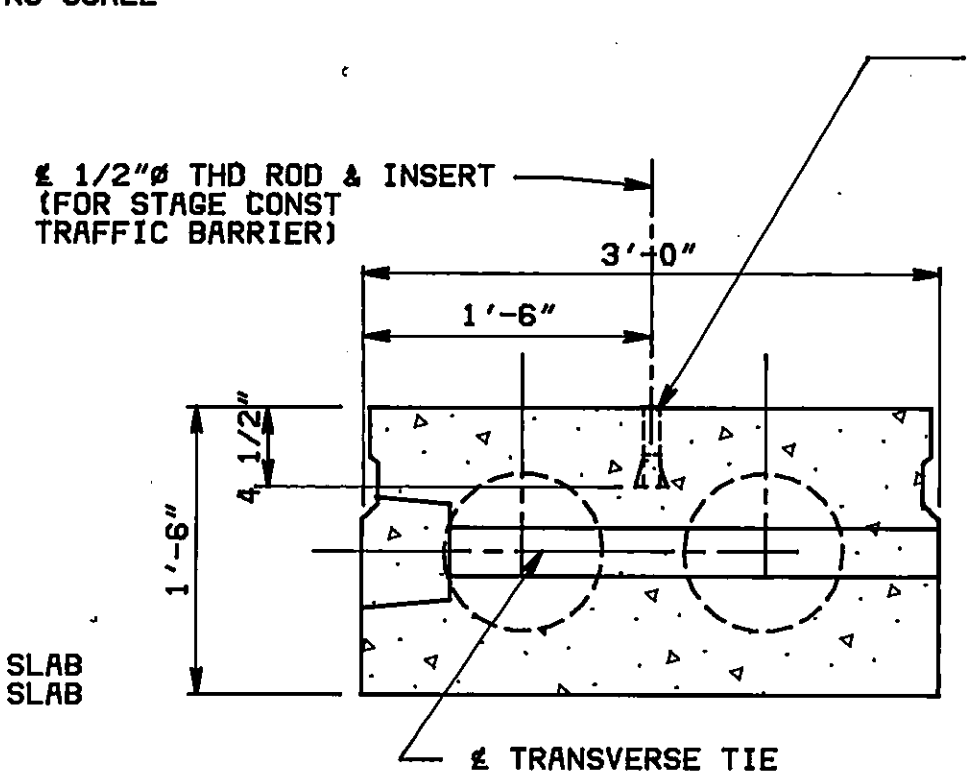
SCALE: 1" = 1'-0"



CAMBER DIAGRAM

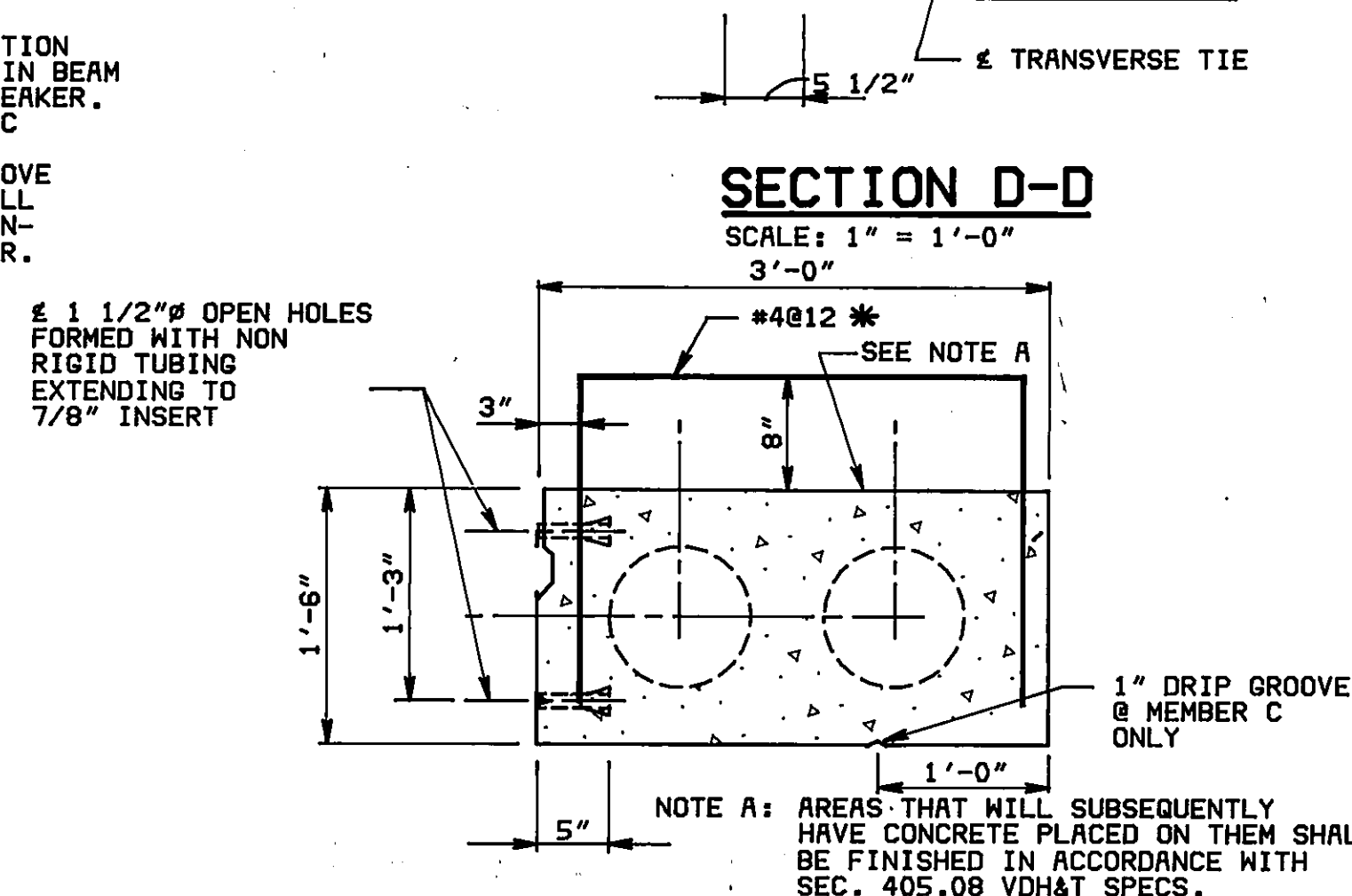
NO SCALE

NOTE: THE EXPECTED NET CAMBER SHOWN IS THE AMOUNT OF RISE THAT SHOULD OCCUR AT MIDSPAN WHEN STRESS TRANSFER IS MADE & THE MEMBER IS FREELY RESTING ON STORAGE SUPPORTS. CAMBER IN BEAMS WILL INCREASE DUE TO CREEP DURING STORAGE. PRECAUTIONS SHOULD BE TAKEN TO PREVENT THE DEVELOPMENT OF ADDITIONAL CAMBER LARGE ENOUGH TO REDUCE THE OVERLAY THICKNESS ABOVE THE BEAM TO A DEPTH LESS THAN THE MINIMUM SHOWN ON THE PLANS.



SECTION F-F

SCALE: 1" = 1'-0"

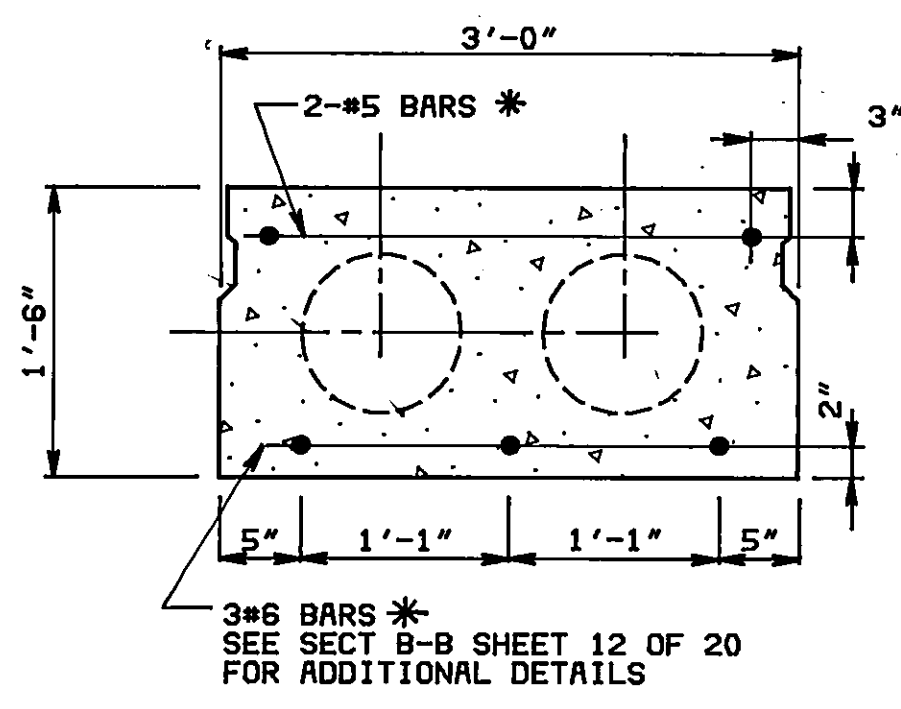


SECTION D-D

SCALE: 1" = 1'-0"

NOTE: 1 1/2" OPEN HOLES FORMED WITH NON RIGID TUBING EXTENDING TO 7/8" INSERT

NOTE A: AREAS THAT WILL SUBSEQUENTLY HAVE CONCRETE PLACED ON THEM SHALL BE FINISHED IN ACCORDANCE WITH SEC. 405.08 VDH&T SPECS.



VIEW G-G

SCALE: 1" = 1'-0"

| REVISION | DATE | DESCRIPTION | BY | APP |
|--|------|----------------|-----------------|-----|
| DESIGNED | HWP | | | |
| DRAWN | DAM | | | |
| CHECKED | RWF | | | |
| APPROVED | HWP | | | |
| SUBMITTED | HWP | | | |
| 13TH STREET OVER NW RAILWAY CITY OF ROANOKE, VIRGINIA PRESTRESSED SLAB DETAILS | | | | |
| HAYES, SEAY, MATTERN & MATTERN | | SCALE AS NOTED | COMM. NO. 2802A | |
| ARCHITECTS - ENGINEERS - PLANNERS | | DATE JULY 1983 | SHEET 14 OF 20 | |
| ROANOKE, VIRGINIA | | | | |