

PLANIMETRIC LEGEND

	Advertising Sign
	Bore Hole
	Bench Mark
	Ballard Post
	Photo Control Point
	Control Station
	Cell Tower
	Drainage Flow Arrow (Storm Drainage)
	Filler Cap (Gas Stations)
	Flow Arrow (Streams & Rivers)
	Flag Pole
	Secondary Control Point
	Filler Pipe (Gas Stations)
	Gas Tank Access Manhole (Gas Stations)
	Gravesite Marker
	Guard Post
	Gas Vent Pipe (Gas Stations)
	Mail Box
	Mine Entrance
	Node Point
	Property Line Symbol
	Found Monumentation
	Property Monument
	Metal or Wooden Post
	Monitoring Well
	Road Arrow
	Reference
	Right of Way Monument
	VDOT Commission Monument
	Iron Right of Way Pin
	Railroad Mtle Marker
	Railroad Right of Way Monument
	Railroad Signal Pole or Gate
	Railroad Telegraph Pole
	Railroad Telephone Pole
	Railroad Switch
	Shrub
	Storm Sewer Manhole
	Photogrammetric Target
	Tree
	Wetland Flag Automatic
	Wetland Flag Manual
	Bridge Elevation
	Plan Elevation
	Water Elevation
	Elevation Tick Mark
	Connected Plat Symbol
	Brush Line
	Pipe Culverts *
	City Line
	County Line
	Curb Only
	Curb and Gutter
	Fence Line
	Guardrail
	Hedge Row
	Jersey Barrier
	Obscure Areas
	Paved Ditches
	Railroad
	Right of Way
	State Line
	Edges of Water
	Sidewalks
	Wetlands
	Woods
* Designate size of culverts (Variable from 12" to 120")	

UTILITY LEGEND

	Anchor (for towers)		Sanitary Stub
	Camera Pole		Steam Manhole
	Electric Box		Steam Vent Pipe
	Electric Guy Pole		Sewer Vent Pipe
	Electric Ground Light		Traffic Control Hand Hole
	Electric Guy Wire		Traffic Control Manhole
	Electric Hand Hole		Telephone Booth
	Electric Meter		Telephone Guy Pole
	Electric Manhole		Telephone Guy Wire
	Electric Marker Post		Test Holes (All Utilities)
	Electric Pedestal		Telephone Hand Hole
	Electric Stub		Telephone Manhole
	End of Information (All Utilities)		Telephone Marker Post
	Fire Hydrant		Telephone Pole
	Fiber Optic Hand Hole		Telephone Pedestal
	Fiber Optic Marker		Telephone Riser Pole
	Gas Meter		Traffic Guy Wire
	Gas Manhole		Traffic Signal Guy Pole
	Gas Marker Post		Traffic Signal Pole
	Gas Monitoring Well		Traffic Signal Pole w/Luminaire
	Gas Stub		Telephone Stub
	Gas Test Station		Television Hand Hole
	Gas Valve		Television Manhole
	Gas Vent		Television Marker Post
	Gas Well		Television Pedestal
	Irrigation Valve		Television Stub
	Light Pole		Unknown Clean Out
	Luminaire		Unknown Hand Hole
	Unknown Manhole		Water Blow Off
	Post Inspection Valve		Water Well
	Power Pole		Water Meter
	Power Riser Pole		Water Manhole
	Sanitary Flow Arrow		Water Marker Post
	Satellite Dish		Water Spigot
	Sewer Clean Out		Water Slamase Connection
	Sanitary Force Main Valve		Water Stub
	Sanitary Marker Post		Water Valve
	Sanitary Manhole		

CAFO	Fiber Optic Cable Television
CHEM	Chemical Line (above or below ground)
FO Duct	Underground Fiber Optic Duct
FUEL	Fuel Line (above or below ground)
G	Gas Line *
G Duct	Gas Line Duct
SAN	Gravity Sewer *
SFM	Sanitary Force Main *
TCFO	Traffic Control Fiber Optic
T/FO	Telephone Fiber Optic
FO	Underground Fiber Optic
Unk	Unknown Utility Line
E	Underground Power Cable
E Duct	Underground Power Cable Duct
T/Tg	Underground Telephone Cable
T/Tg Duct	Underground Telephone Cable Duct
TC	Underground Traffic Control
TC Duct	Underground Traffic Control Duct
CATV	Underground Television Cable
CATV Duct	Underground Television Cable Duct
VS	Vacuum Sewer
W	Water Line *
W Duct	Water Line Duct
Unk	Depicted According To Utility Records **
Unk	Abandoned According To Utility Records **
Unk	According To Miss Utility Information **
	* Designate size (Variable from 0.75" to 54"
	** Designate type (Unknown line is shown)

CONTROL STATION ID. M&C *1
ESTABLISHED BY T. W. CALDWELL
VERTICAL DATUM BASED ON NAVD 88 ELEV. 941.30
HORIZONTAL DATUM BASED ON NAD 83/93

ROANOKE CITY CONTROL NETWORK
X (EAST) 11,078,010.5252
Y (NORTH) 3,632,590.0627

AZIMUTH TO STATION M&C *2 IS 122°15' 38"

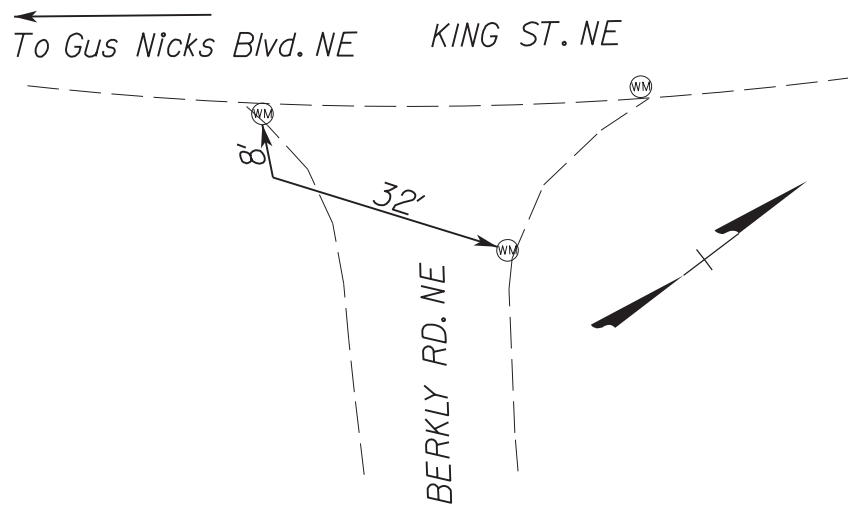
CONTROL STATION ID. M&C *2
ESTABLISHED BY T. W. CALDWELL
VERTICAL DATUM BASED ON NAVD 88 ELEV. 938.62
HORIZONTAL DATUM BASED ON NAD 83/93

ROANOKE CITY CONTROL NETWORK
X (EAST) 11,078,410.1203
Y (NORTH) 3,632,337.8338

AZIMUTH TO STATION M&C *1 IS 302°15' 38"

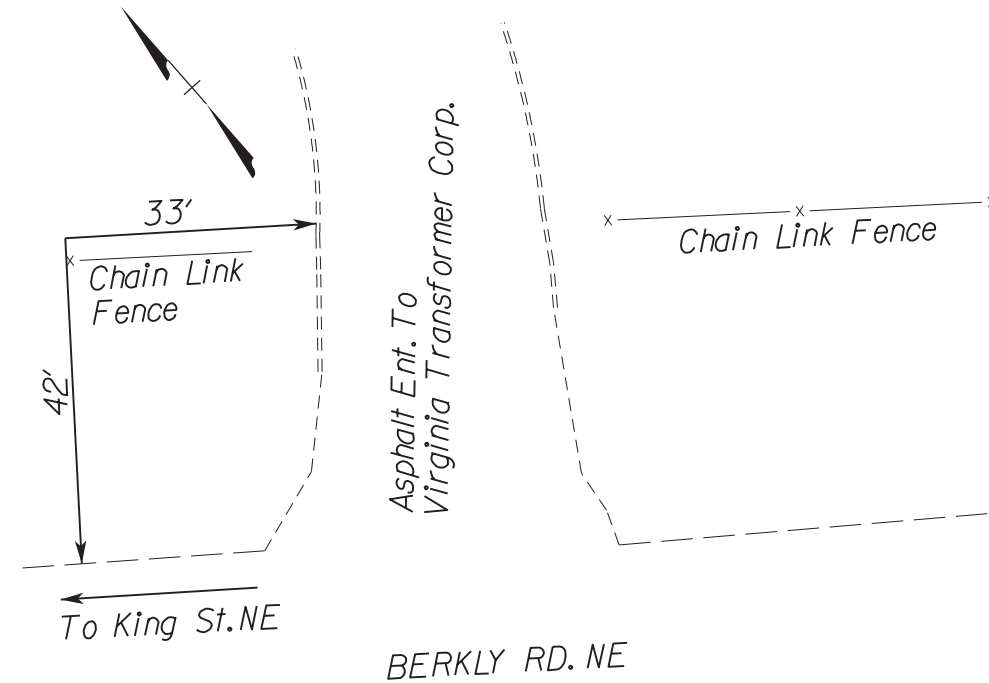
DETAILED DESCRIPTION

To Station Is At The Intersection Of King St.NE (Route 653)
And Berkly Rd.NE. Station Is An Iron Pin with Cap Set Flush
With The Ground. For A Detailed Description See Sketch Below.



DETAILED DESCRIPTION

To Reach Station From The Intersection Of King St.NE (Route 653)
And Berkly Rd.NE. Proceed South East North Berkly Rd.NE 0.09 Miles
To Station On The Left. Station Is An Iron Pin with Cap Set Flush With
The Ground. For A Detailed Description See Sketch Below.



Utility Owners

Ticket : A606401255 Rev: 00A Taken: 03/04/16 02:34 PM

State: VA Cnty: ROANOKE CITY Place:
Address : BERKLEY RD NE
Responses due by: 03/28/16 07:00 AM Expires:

Marking Code	Description	Response
AEP	APPALACHIAN POWER (AEP111) 03/21/16 03:31 PM 30	No Conflict; utility is outside of stated work area. Field Contact: USIC LOCATING SERVICE (800)778-9140 In the event of damage to a facility call: (800)956-4237
ATT	AT&T (ATT392) 03/10/16 08:11 AM 30	No Conflict; utility is outside of stated work area. Field Contact: LINARD MILLER (703)624-4956 In the event of damage to a facility call: (800)252-1133
COX	COX COMMUNICATINS (COX268) 03/15/16 10:07 AM 30	No Conflict; utility is outside of stated work area. Field Contact: LISA OLSEN (757)951-7211 In the event of damage to a facility call: (540)915-2603
RGC	ROANOKE GAS (RGC162) 03/15/16 10:07 AM 30	No Conflict; utility is outside of stated work area. Field Contact: S & N (804)608-5640 In the event of damage to a facility call: (540)777-4427
VZN	VERIZON (VZN804) 03/04/16 02:49 PM 30	No Conflict; utility is outside of stated work area. Field Contact: UTILIQUEST (703)754-2116 In the event of damage to a facility call: (877)562-2253
WWV	WESTERN VA-WATER&SEWE (WWV853) 03/25/16 04:3 PM 12	Marked up to privately owned utility; contact private utility owner for locate Field Contact: YVONNE DOOLITTLE (540)853-2596 In the event of damage to a facility call: (540)853-2792

Ticket : A606401261 Rev: 00A Taken: 03/04/16 02:39 PM

State: VA Cnty: ROANOKE CITY Place:
Address : KING ST NE
Responses due by: 03/28/16 07:00 AM Expires:

Marking Code	Description	Response
AEP	APPALACHIAN POWER (AEP111) 03/21/16 03:31 PM 10	Marked Field Contact: USIC LOCATING SERVICE (800)778-9140 In the event of damage to a facility call: (800)956-4237
COX	COX COMMUNICATINS (COX268) 03/15/16 10:07 AM 30	No Conflict; utility is outside of stated work area. Field Contact: LISA OLSEN (757)951-7211 In the event of damage to a facility call: (540)915-2603
RGC	ROANOKE GAS (RGC162) 03/15/16 10:07 AM 30	No Conflict; utility is outside of stated work area. Field Contact: S & N (804)608-5640 In the event of damage to a facility call: (540)777-4427
VZN	VERIZON (VZN804) 03/04/16 02:58 PM 30	No Conflict; utility is outside of stated work area. Field Contact: UTILIQUEST (703)754-2116 In the event of damage to a facility call: (877)562-2253
WWV	WESTERN VA-WATER&SEWE (WWV853) 03/25/16 12:29 PM 12	Marked up to privately owned utility; contact private utility owner for locate Field Contact: YVONNE DOOLITTLE (540)853-2596 In the event of damage to a facility call: (540)853-2792

Survey Control

P*1: N3632590.0627 E11078010.5252 Z941.298
Bearing: S57°44'22"E HD1st: 472.542'
P*2: N3632337.8338 E110784101203 Z938.620

Survey Benchmark(s) NAVD 88

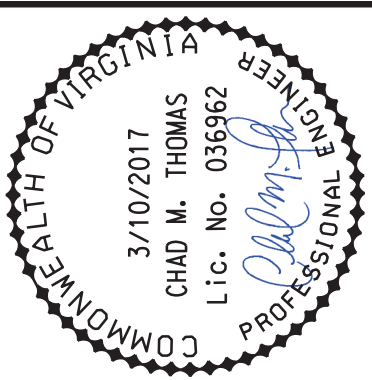
Chisled Square Located The Southeast Corner Of The
Southeast Bridge Abutment.
Elev. = 936.210'

Project : 34301- Berkley Road Bridge Replacement
Client : City of Roanoke
Horizontal Datum Based On City of Roanoke Control Network
Vertical Datum Based On City of Roanoke Control Network
Survey By : T. W. Caldwell
Drawn By : J. A. Dethlefsen
Check By : T. W. Caldwell
Date : 1-22-16
Scale : 1" = 25'



SURVEY NOTES:

- THIS LOCATION SURVEY WAS COMPLETED UNDER THE DIRECT RESPONSIBLE CHARGE OF TIMOTHY W. CALDWELL, LS FROM AN ACTUAL GROUND SURVEY MADE UNDER MY SUPERVISION; THAT THE IMAGERY AND/OR ORIGINAL DATA WAS OBTAINED DURING MARCH 2016; AND THAT THIS PLAT, MAP, OR DIGITAL GEOSPATIAL DATA INCLUDING METADATA MEETS MINIMUM ACCURACY STANDARDS UNLESS OTHERWISE NOTED.
- PROPERTY INFORMATION IS BASED ON DEEDS AND PLATS OF RECORD AND PHYSICAL EVIDENCE FOUND.
- HORIZONTAL (NAD 83/93) AND VERTICAL (NAVD 88) CONTROL WAS ESTABLISHED BY STATIC GPS SURVEY BY TIMOTHY W. CALDWELL, LS, USING ROANOKE CITY CONTROL NETWORK MONUMENT "VINYARD (ROANOKE 2000)".
- UNDERGROUND UTILITY LOCATIONS BASED ON DESIGNATION BY MISS UTILITY TICKET NUMBERS A606401255 & A606401261



Date									
Revisions									

Issue Date:	3/10/2017
Drawn By:	DJS
Designed By:	DJS
Checked By:	MSA
Date:	

Mattern & Craig
ENGINEERS • SURVEYORS
701 FIRST STREET, S.W.
ROANOKE, VIRGINIA 24016
(540) 346-9342
FAX (540) 345-7691

City of Roanoke
Planning, Building, & Development
COMPREHENSIVE DEVELOPMENT PLAN
APPROVED
by Adrian Gilbert 03/15/2018

BERKLEY ROAD OVER GLADE CREEK TRIBUTARY A
**SURVEY REFERENCE POINTS
LEGEND, & UTILITY OWNERS**
CITY OF ROANOKE, VIRGINIA

Vertical Scale:
N/A

Horizontal Scale:
N/A

Commission Number:
34301

Sheet No.:

C-1