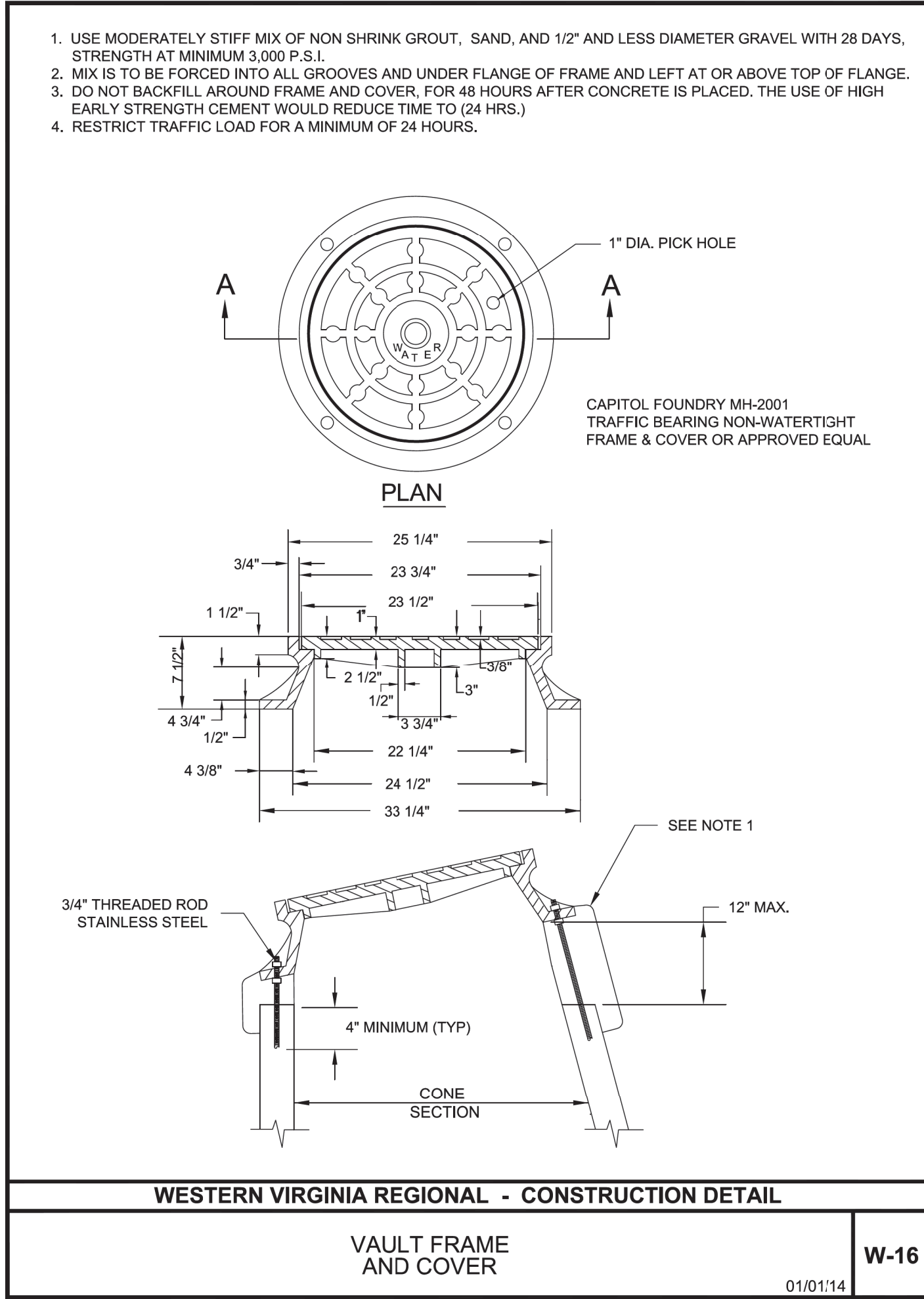
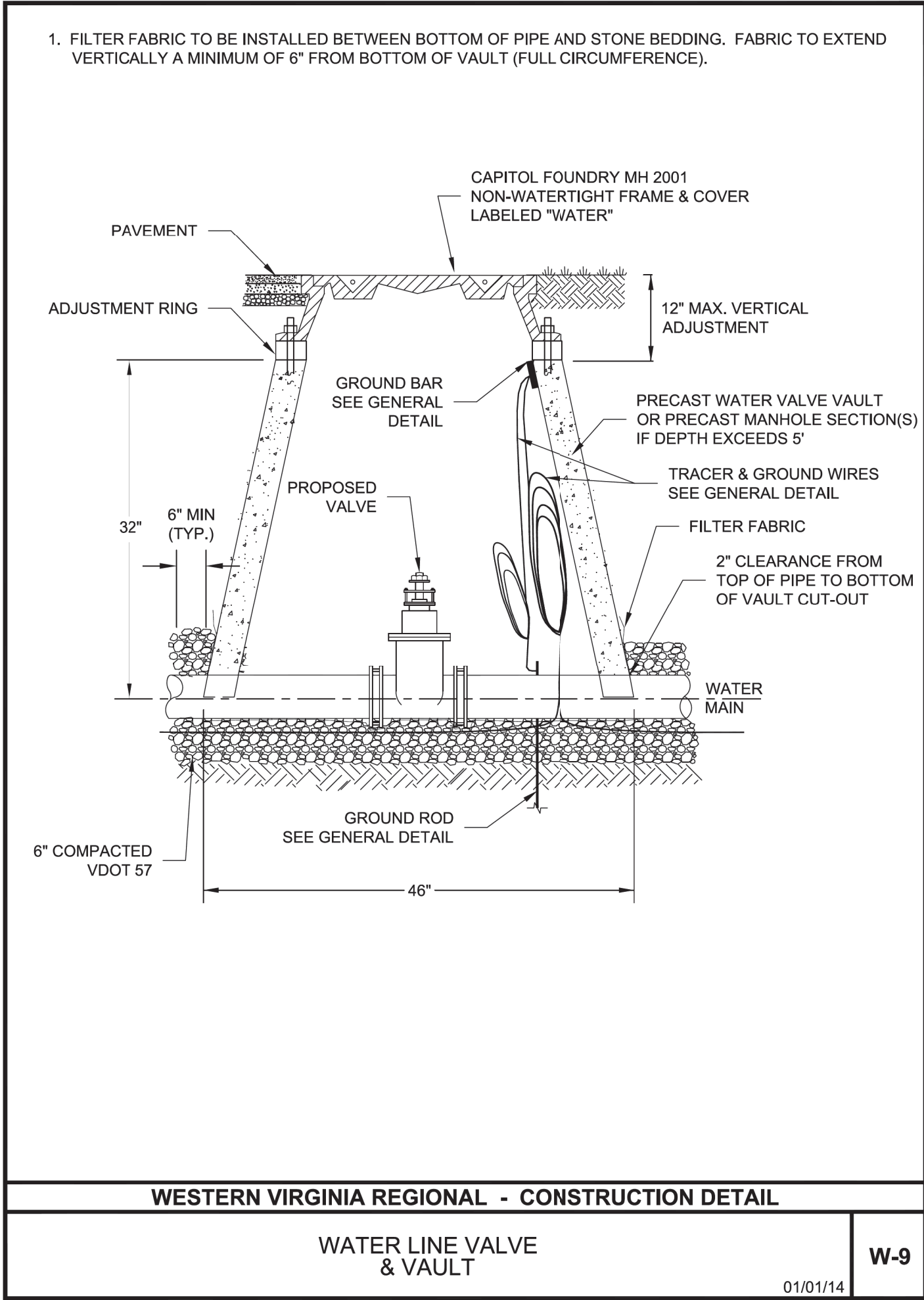
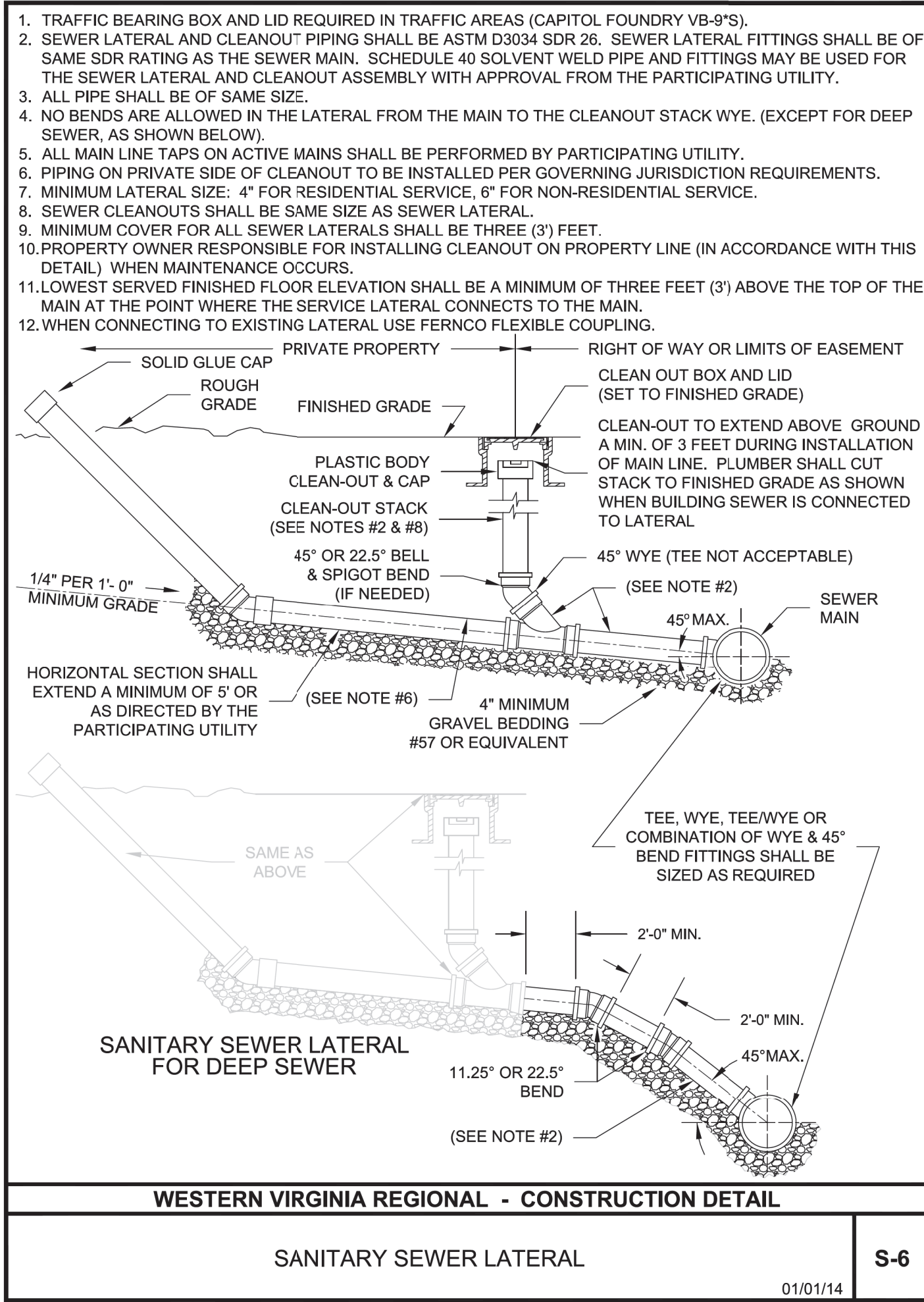
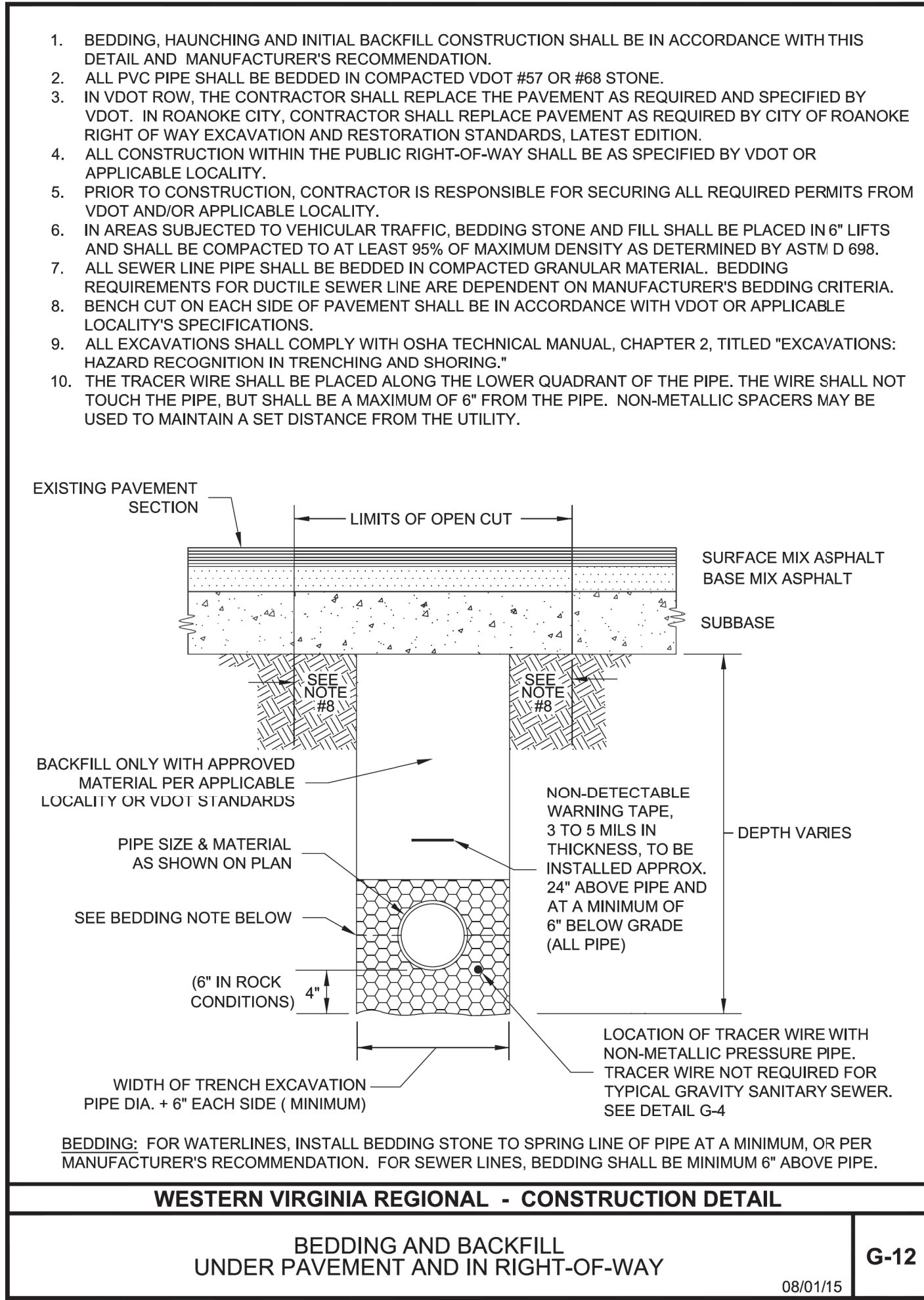
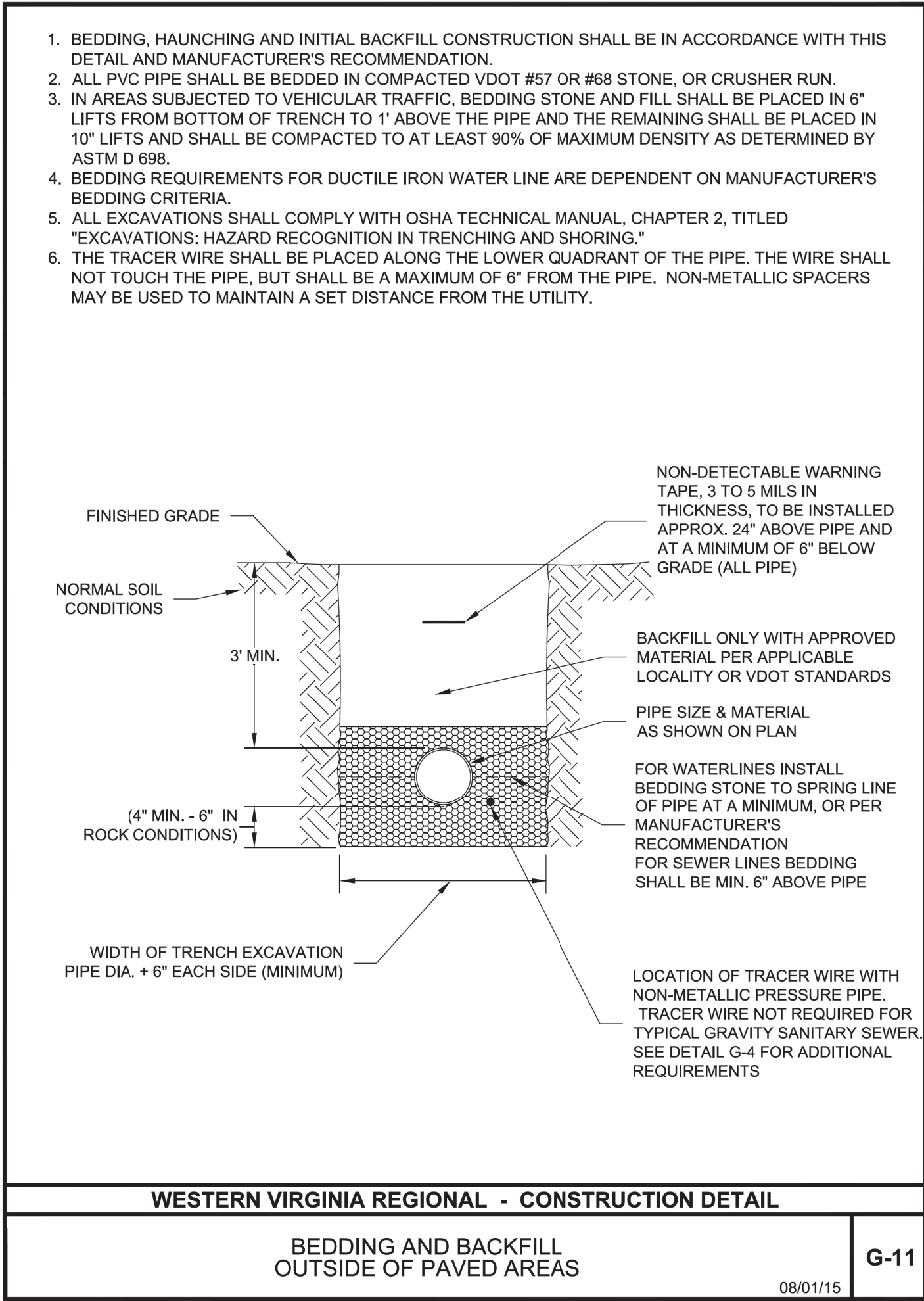


\\02-68.11.03.h1-wa\34301-C-6B-Utility Details.sh



Date									
Revisions									

Issue Date:	03/10/17
Drawn By:	RPK
Designed By:	RPK
Checked By:	BCC
Date:	03/10/17

**Mattern & Craig**  
ENGINEERS • SURVEYORS  
701 FIRST STREET, S.W.  
ROANOKE, VIRGINIA 24016  
(540) 345-5342  
FAX (540) 345-7691

**City of Roanoke**  
Planning, Building, & Development  
COMPREHENSIVE DEVELOPMENT PLAN  
**APPROVED**  
by Adrian Gilbert 03/15/2018

BERKLEY ROAD OVER GLADE CREEK TRIBUTARY A  
**UTILITY DETAILS**  
CITY OF ROANOKE, VA

Vertical Scale:	N/A
Horizontal Scale:	1" = 25'
Commission Number:	34301
Sheet No.:	C-6B